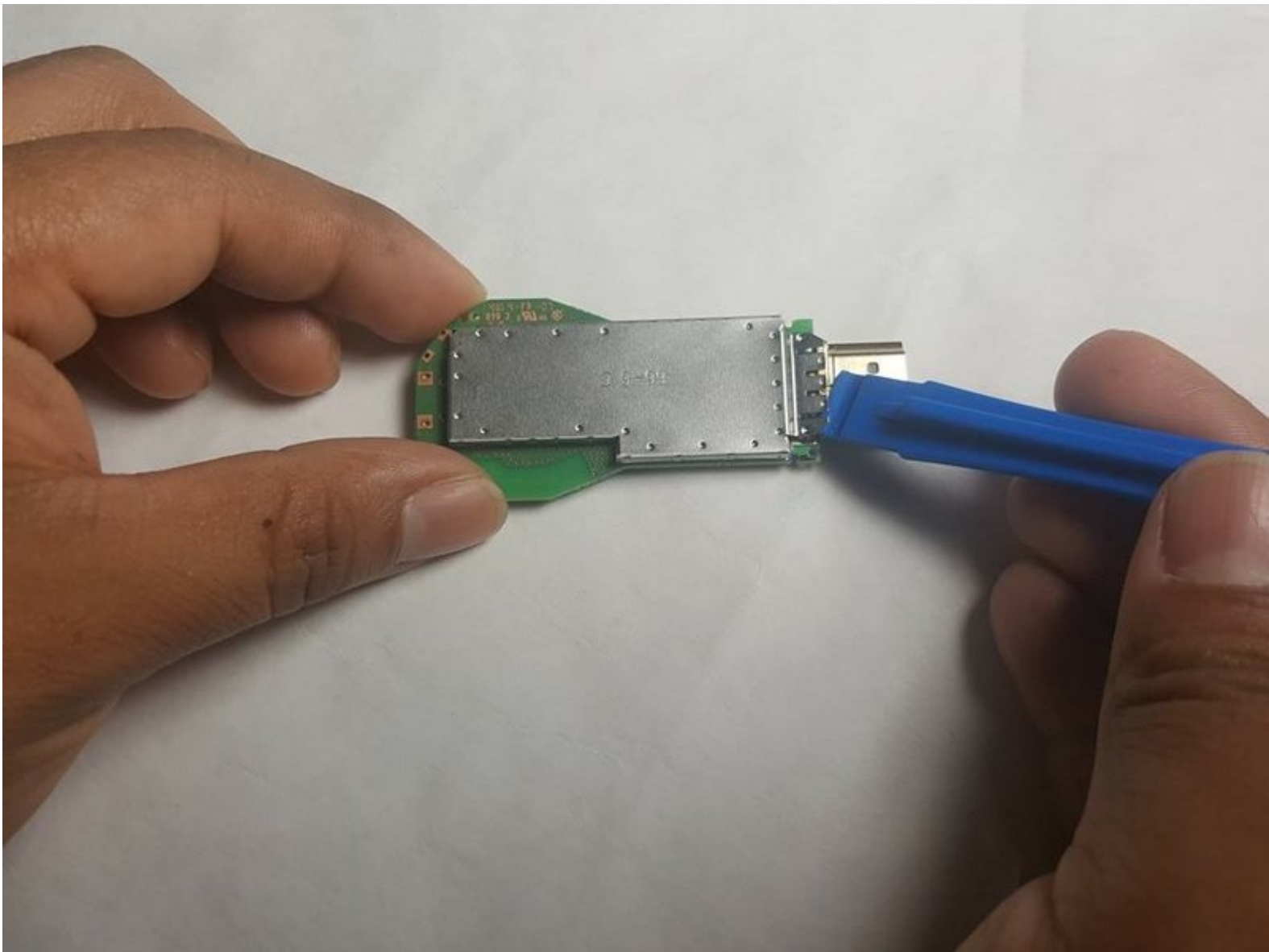




Chromecast Metal Shielding Replacement

Replace the internal electromagnetic shielding of a Google Chromecast to secure internal components.

Written By: Cameron Heiges



INTRODUCTION

If a Google Chromecast is dropped or overheated, there is a chance the internal metal shielding may lose integrity. The external case replacement guide should be consulted prior to this guide.



TOOLS:

- [iFixit Opening Tools](#) (1)
-

Step 1 — Case



- Place the Google Chromecast face down (with text not showing) on a flat surface.
- Insert a flat tool just above the micro-USB port to detach the top part of the case from the bottom.

Step 2



- Continue prying the top of the case from the bottom toward the HDMI port until the top casing is completely removed.

Step 3



- Remove the circuit board, lifting from the HDMI port.
- ⓘ The power button may become dislodged.

Step 4



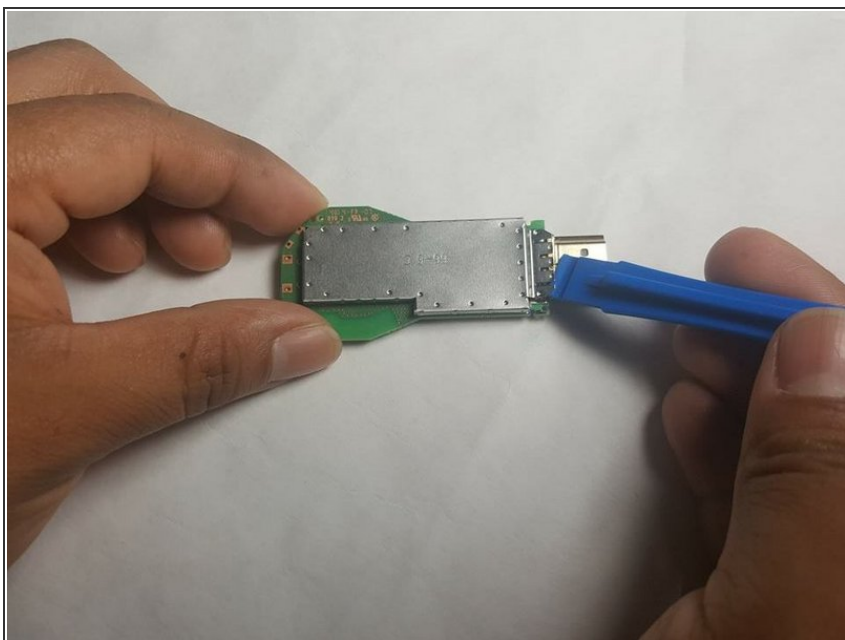
- Pry the plastic clamp from the heatsink.
- ⓘ Do not pry too hard to avoid breaking the clamp.

Step 5



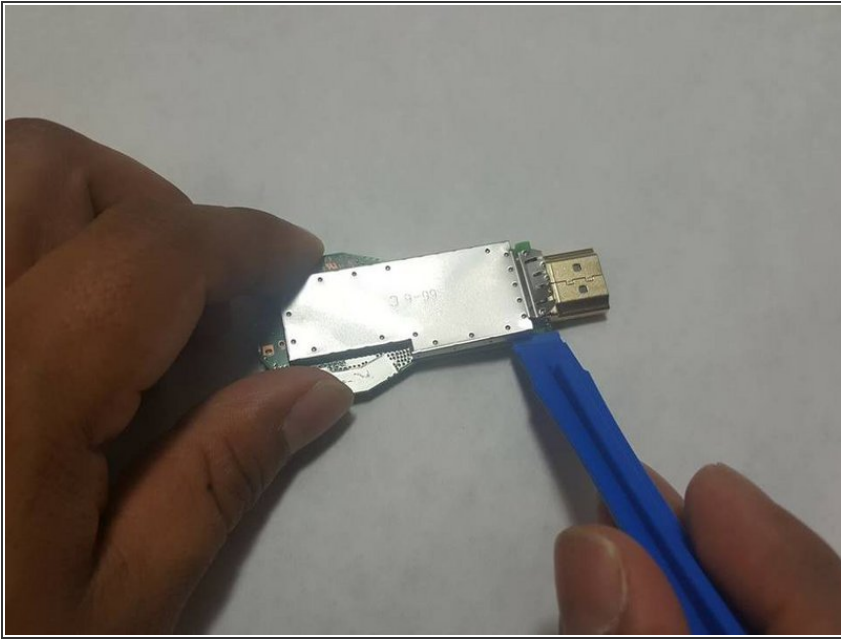
- Insert a plastic opening tool under the heatsink, and pry the heatsink up and out of the case.
- ⓘ The adhesive's strength may vary, and force should be applied gently until it becomes dislodged to avoid breaking the device.

Step 6 — Metal Shielding



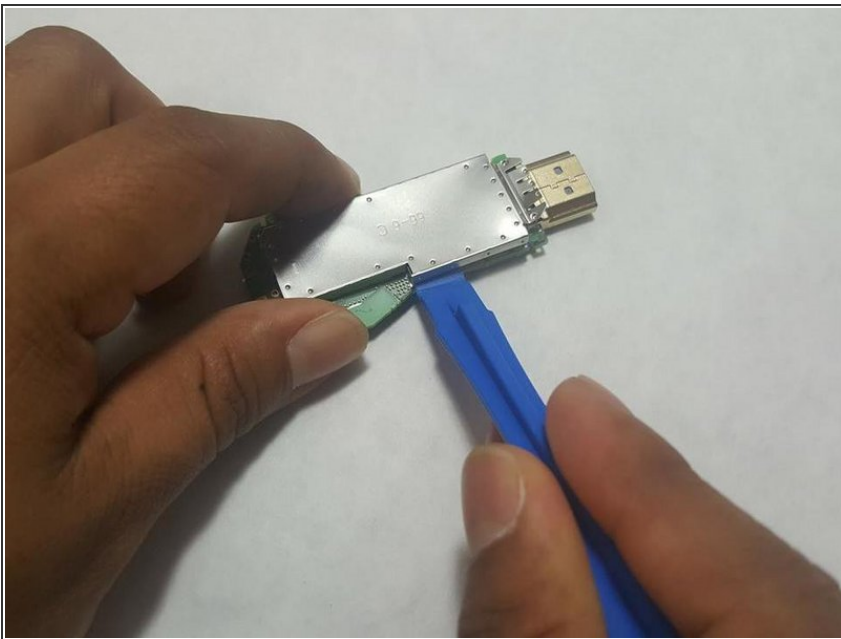
- Pry the metal extensions from the HDMI port.

Step 7



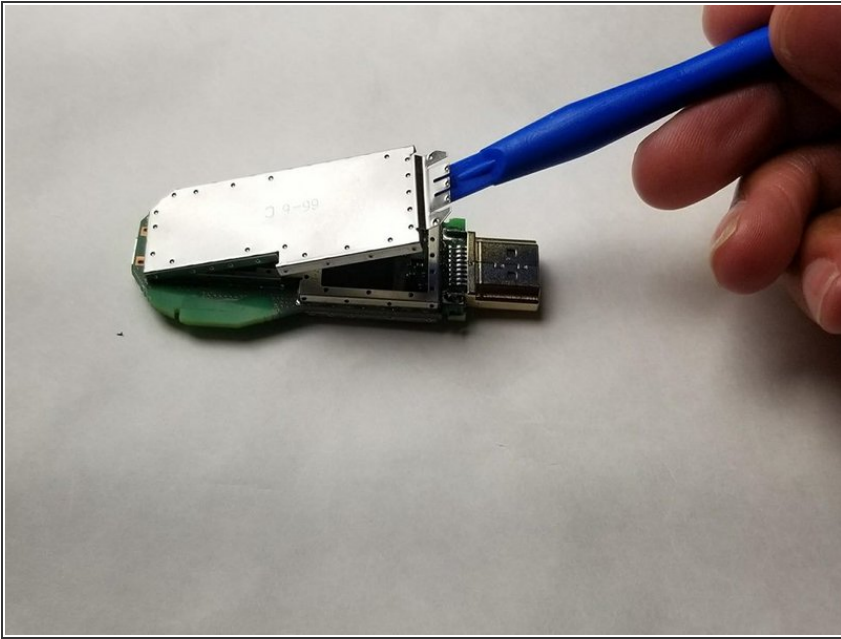
- Insert the plastic opening tool into the corner next to the metal extensions, prying upward.

Step 8



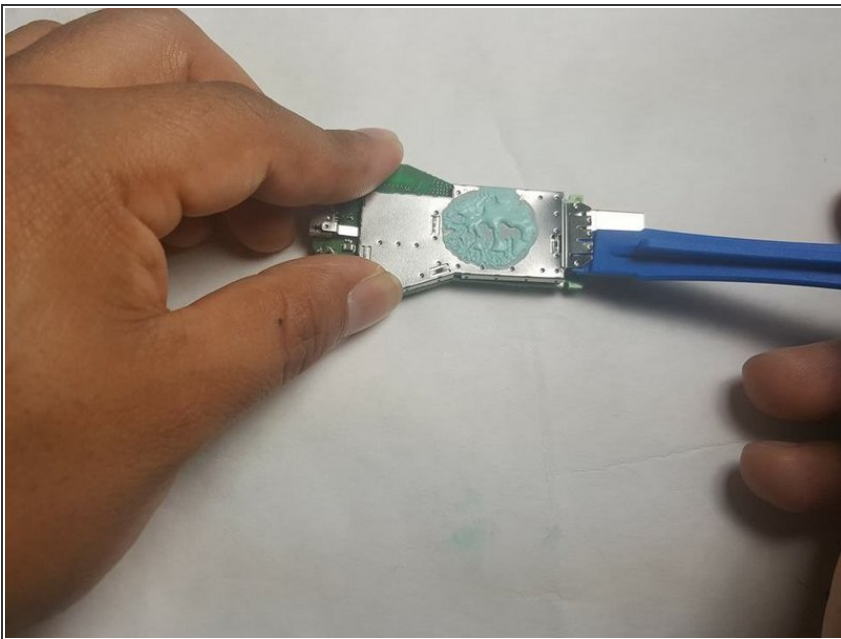
- Pry the metal piece around the metal, extruding it from the internal components.

Step 9



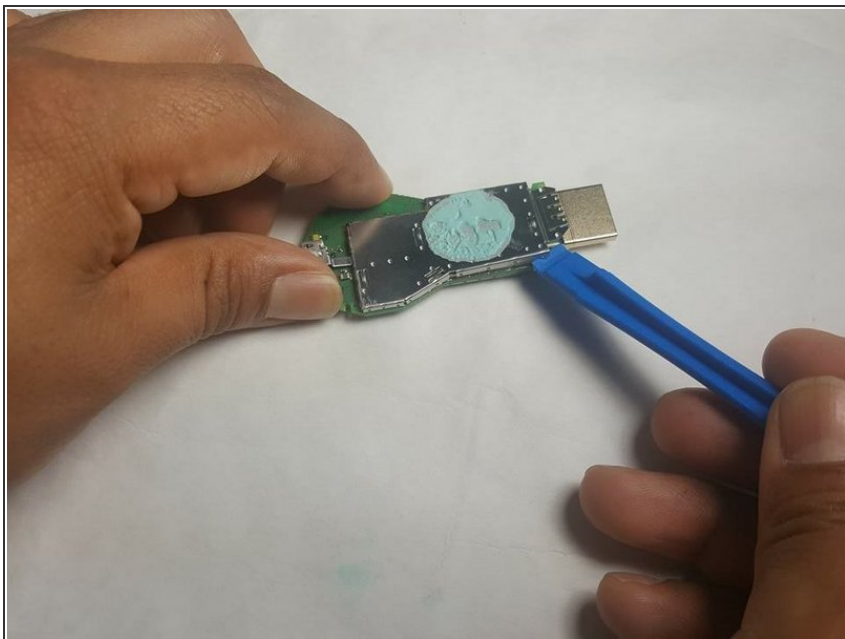
- Completely remove the top metal casing to expose the internal components.

Step 10



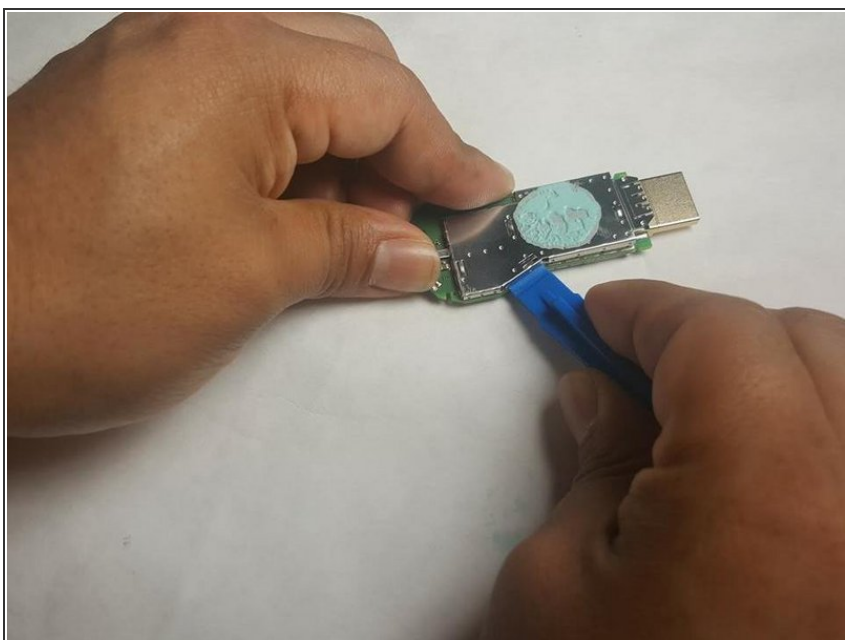
- Pry metal extensions from the HDMI port on the posterior side of the device.

Step 11



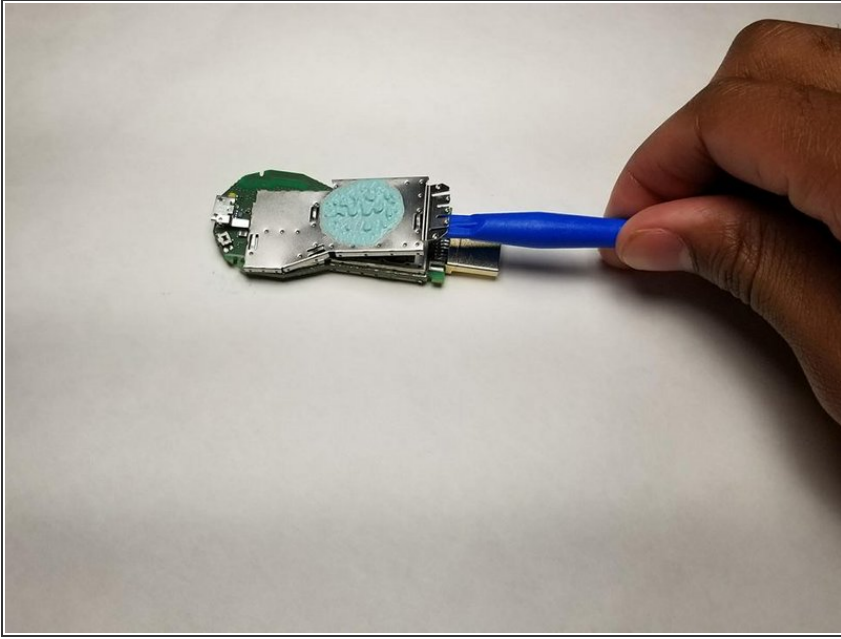
- Insert the plastic opening tool under the corner to pry off the metal casing from the internal components.

Step 12



- Continue prying around the device, removing the metal piece from the internal components.

Step 13



- Completely remove the bottom metal piece.

To reassemble your device, follow these instructions in reverse order.