



# Chromo Inc. T2 Front Facing Camera Replacement

This will guide you in replacing your Chromo Inc. T2 internal camera.

Written By: Ismael DeLuna



# INTRODUCTION

All you need is a plastic opening tool and tweezers! With these you can change your camera!



## TOOLS:

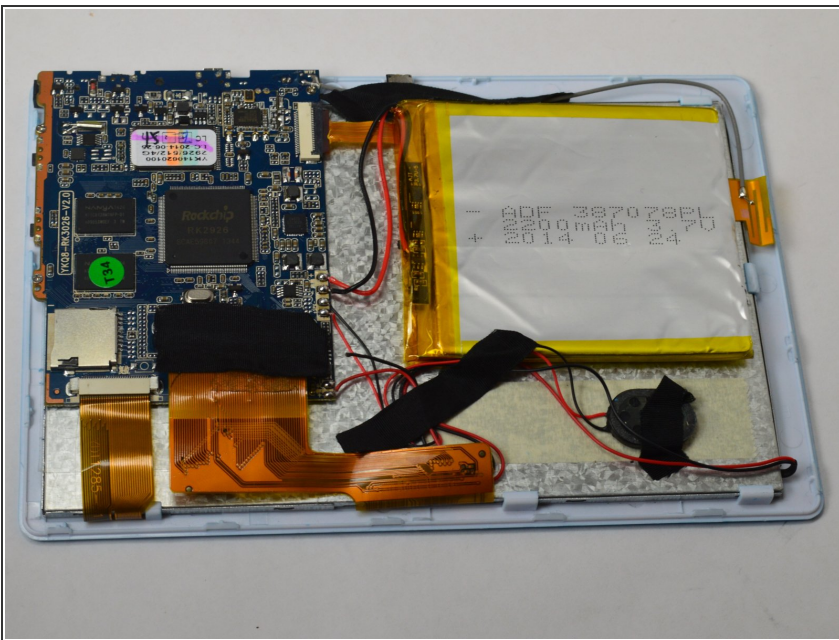
- [iFixit Opening Tools](#) (1)
  - [Tweezers](#) (1)
  - [Spudger](#) (1)
-

## Step 1 — Removing the Casing



- Place your Plastic Opening Tool between the screen and the case. Slowly move it around the casing while prying in a downward motion to undo the hinges holding the two together and separate the two parts.

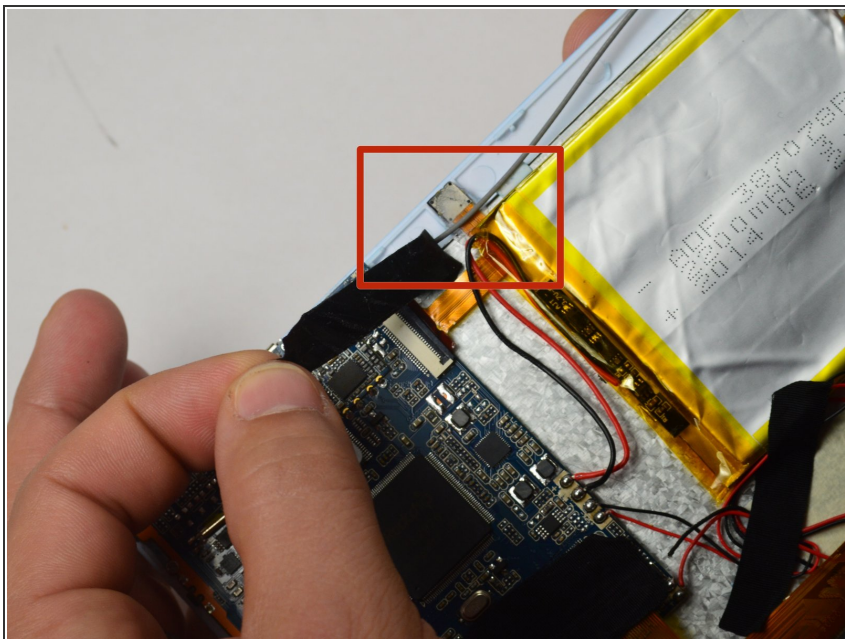
## Step 2 — Turn it around



- After separating the case and screen, turn your screen face down so you can see the internal parts!

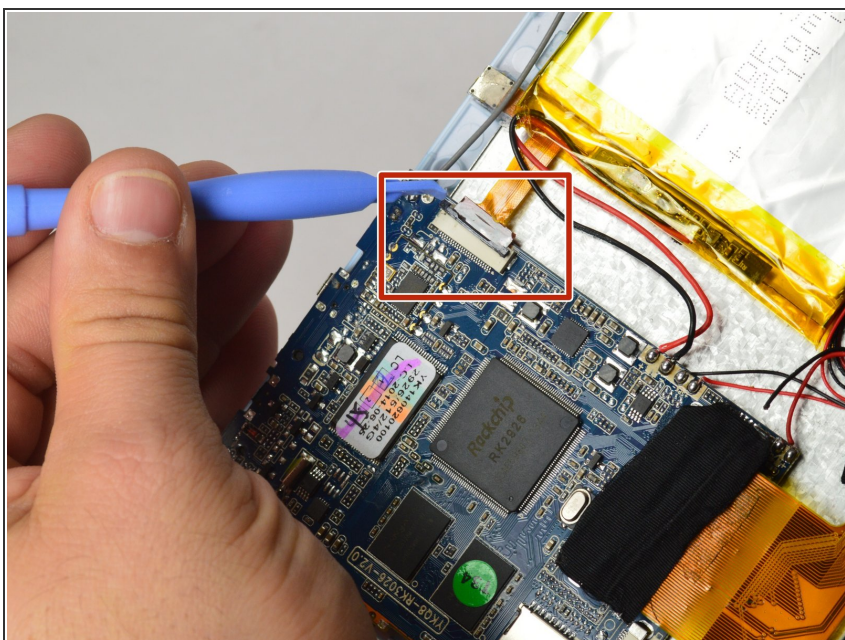


### Step 3 — Getting to the camera



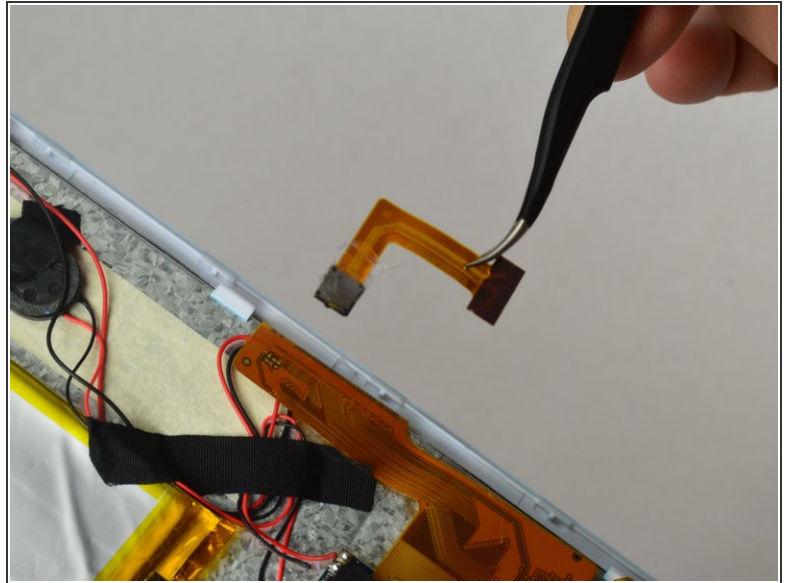
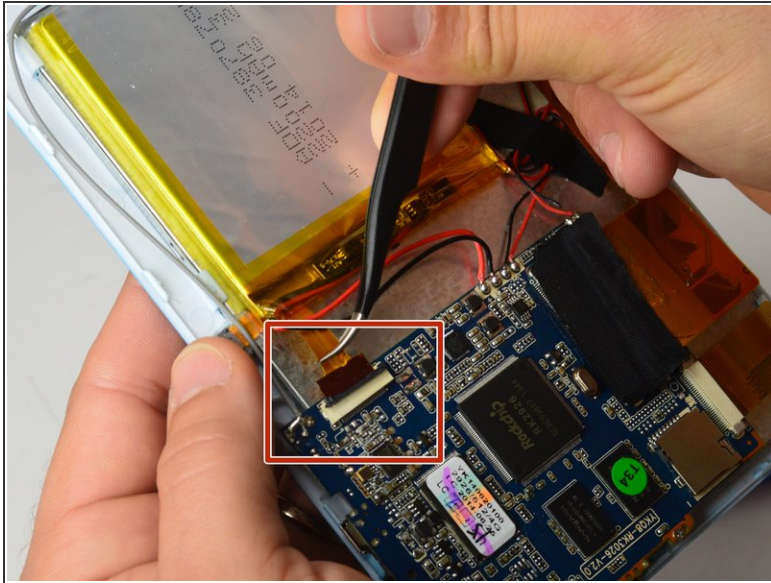
- Remove the tape that holds the camera in place.

### Step 4 — Free up the flex cable



- Using the small plastic opening tool, gently push the gray connector back to unlock the flex cable.

## Step 5 — Removing the Flex Cable and Camera



- Using a pair of tweezers, gently grasp the flex cable and pull it out while using your other hand to keep the camera in place. Once removed, your camera is now free and ready for replacement!

To reassemble your device, follow these instructions in reverse order.