



# Chromo Inc. T2 Motherboard Replacement

This will guide you through replacing your Chromo Inc. T2 motherboard.

Written By: Ismael DeLuna



# INTRODUCTION

Using basic tools and a Soldering Station, you will be removing the motherboard for the Chromo Inc. T2.



## TOOLS:

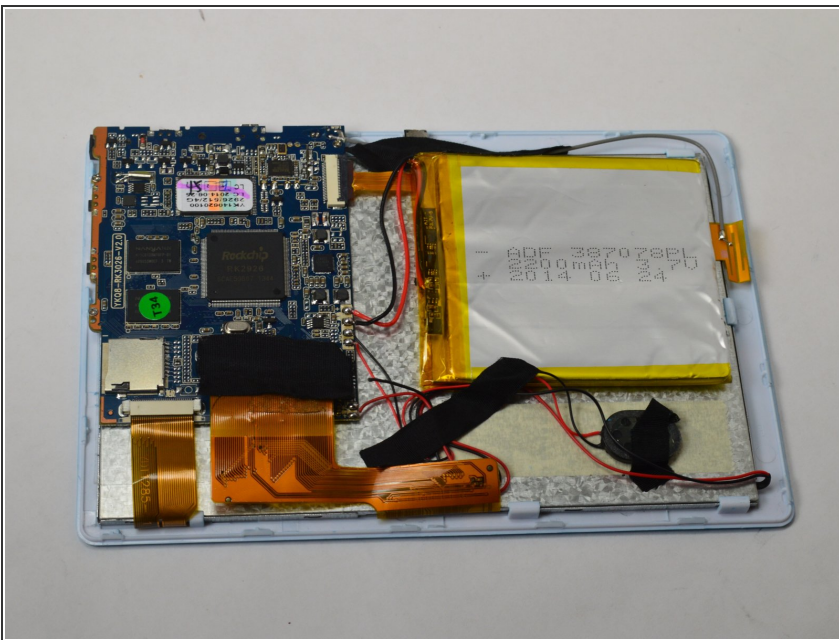
- [iFixit Opening Tools](#) (1)
  - [Phillips #00 Screwdriver](#) (1)
  - [Soldering Iron](#) (1)
-

## Step 1 — Removing the Casing



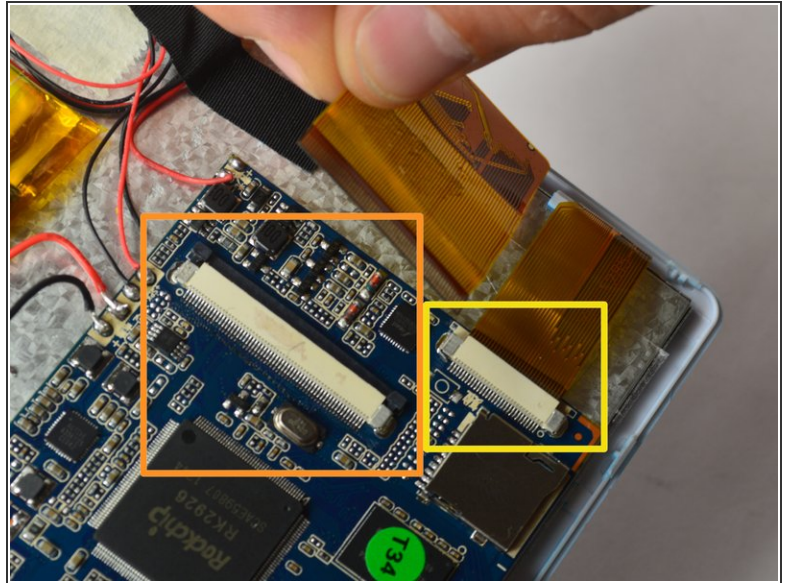
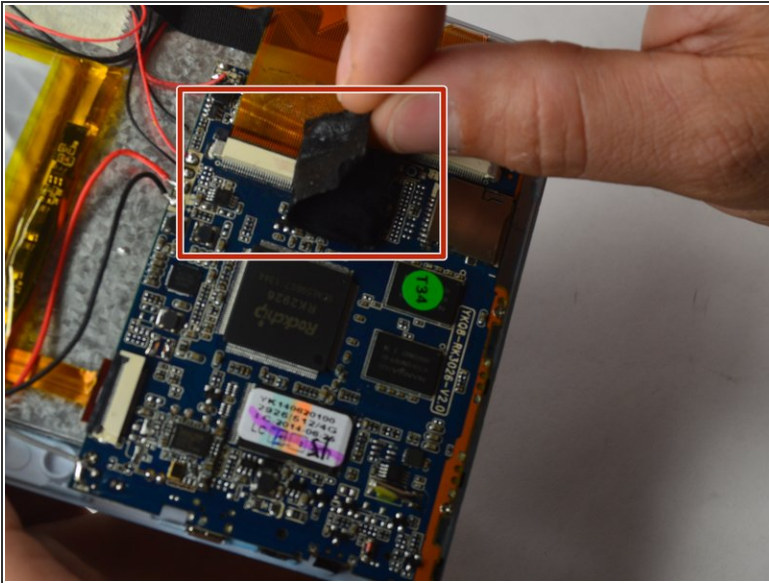
- Place your Plastic Opening Tool between the screen and the case. Slowly move it around the casing while prying in a downward motion to undo the hinges holding the two together and separate the two parts.

## Step 2 — Turn it around



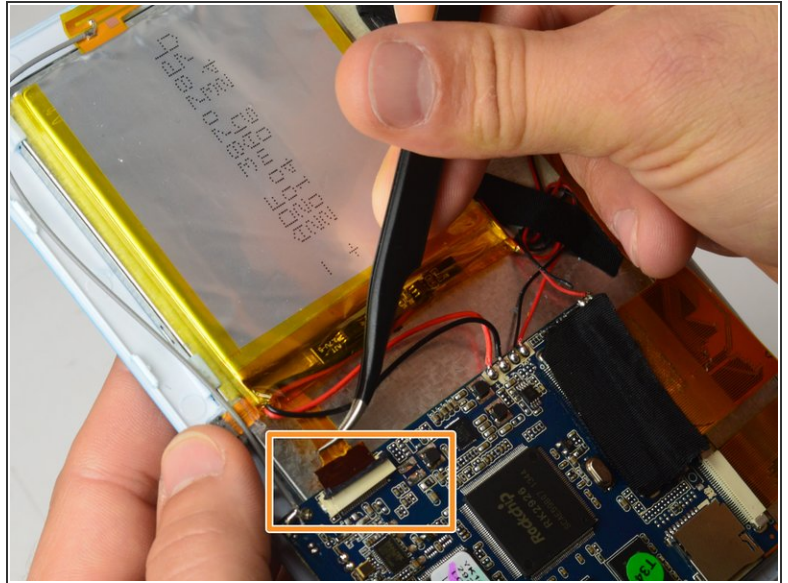
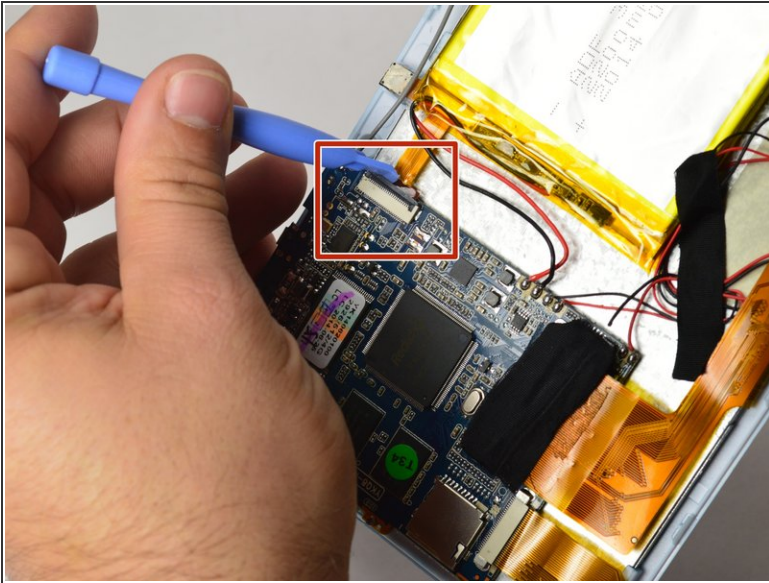
- After separating the case and screen, turn your screen face down so you can see the internal parts!

### Step 3 — Disconnecting Flex Cables



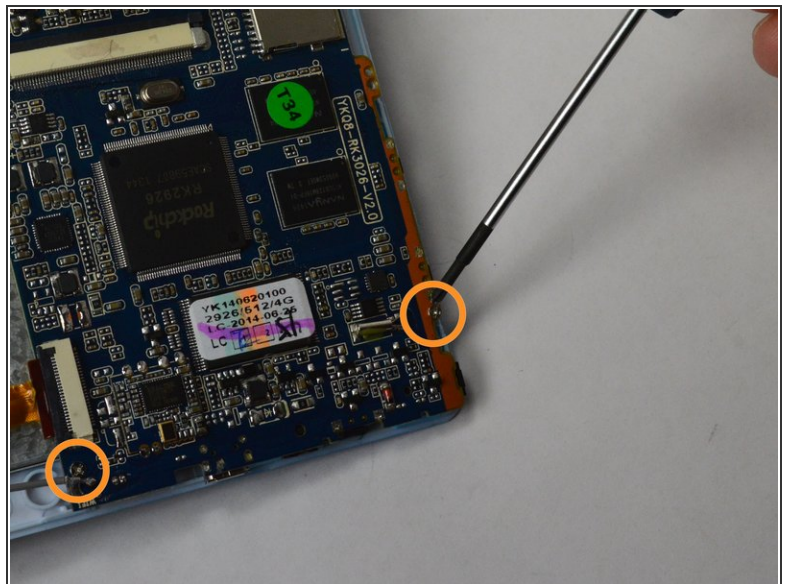
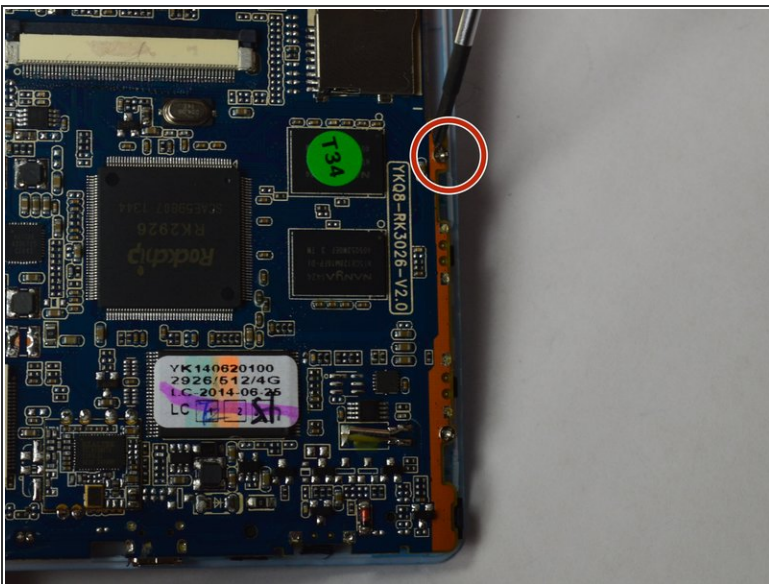
- Peel back the tape holding the big flex cable in place.
- Using your plastic opening tool, gently push back the gray connector to free the flex cables and then pull them out.

## Step 4 — Disconnecting the Camera



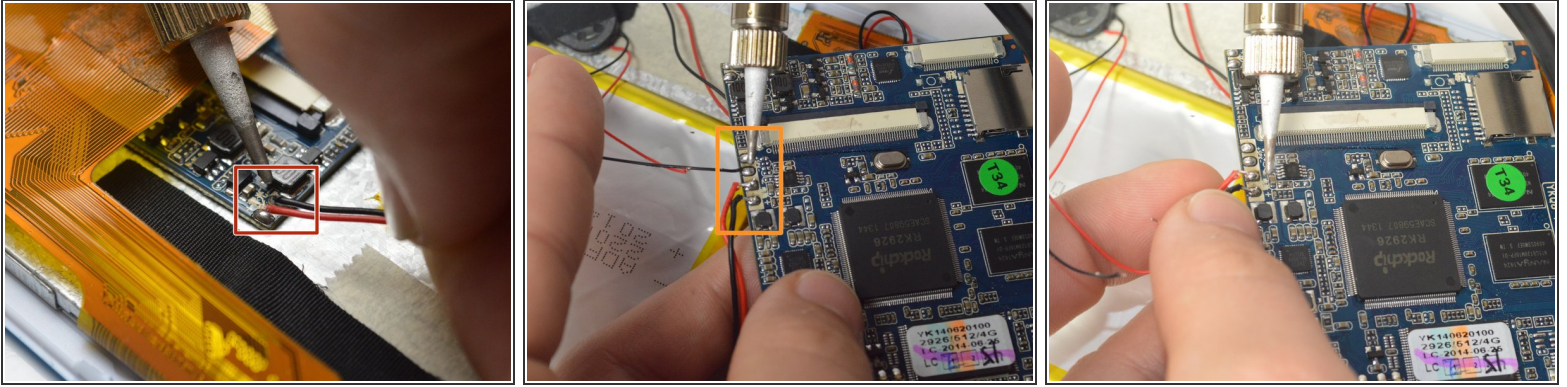
- Using the small plastic opening tool, gently push the gray connector back to unlock the flex cable.
- Using a pair of tweezers, gently grasp the flex cable and disconnect it from the connector.

## Step 5



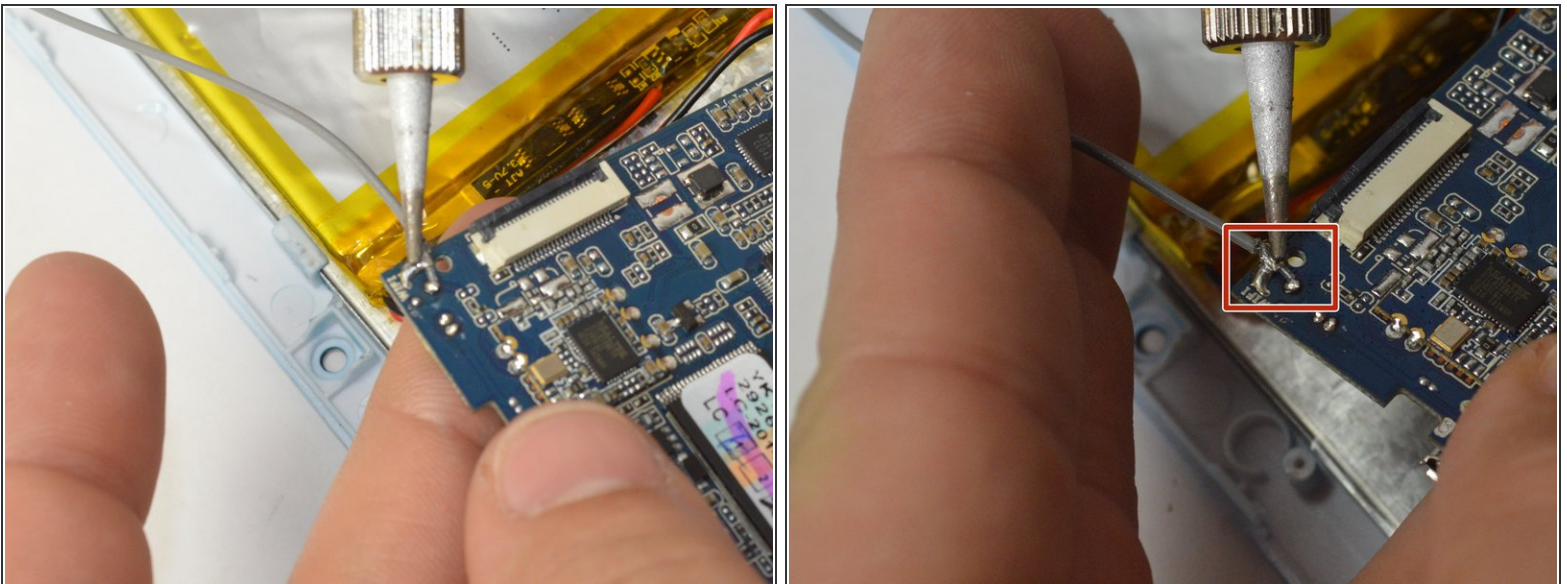
- Using a Phillips #00 Precision Screwdriver, remove the three 3mm screws holding the motherboard.

## Step 6



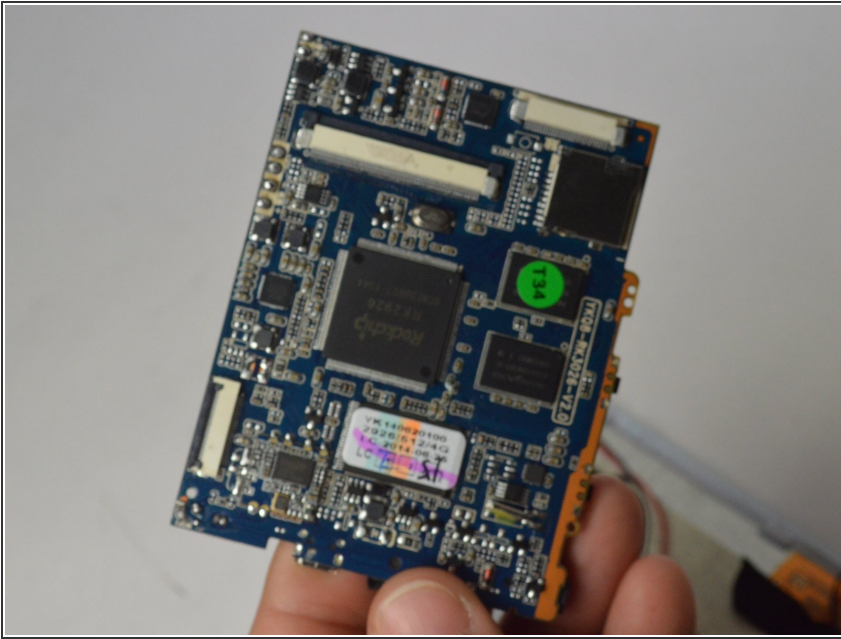
- Using your soldering iron, desolder the six wires on the side of the logic board.
- i** Note: Remember where these wires go as re-connecting them incorrectly can lead to damaging the device!
- !** Soldering Iron gets very hot, take care to not touch anywhere on the soldering iron except for the handle!

## Step 7



- Using your soldering Iron, desolder the grounding cable on the motherboard.
- !** Soldering Iron gets very hot, take care to not touch anywhere on the soldering iron except for the handle!

## Step 8



- Your motherboard is now ready for replacement!

To reassemble your device, follow these instructions in reverse order.