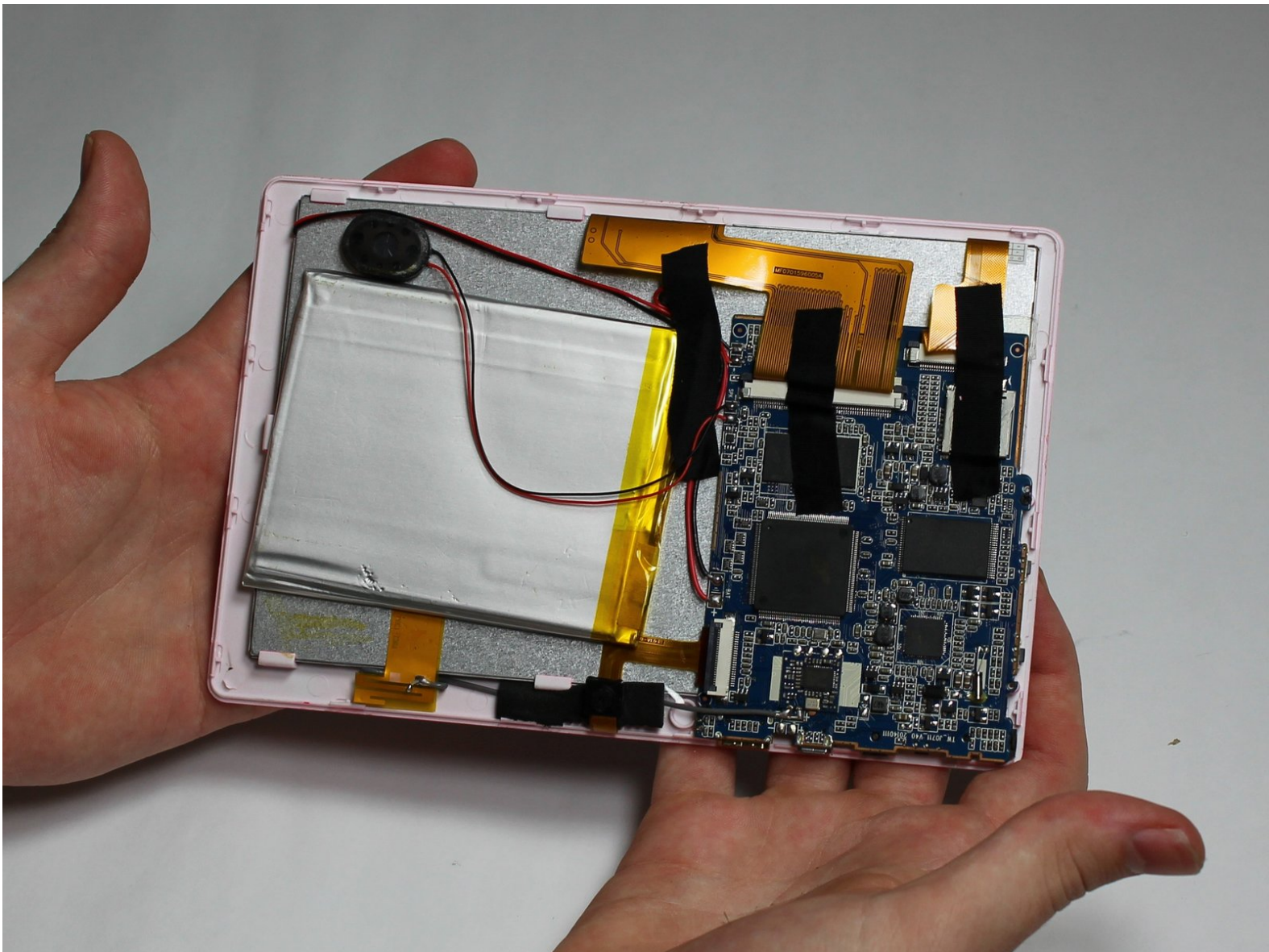




Chromo Noria Battery Replacement

This guide will help you replace the battery.

Written By: Kevin Nguyen



INTRODUCTION

This is a guide to replace the battery of the Chromo Noria. Replacing the battery is one of the main important replacements. Without a functional battery, the life of the tablet ceases to exist.



TOOLS:

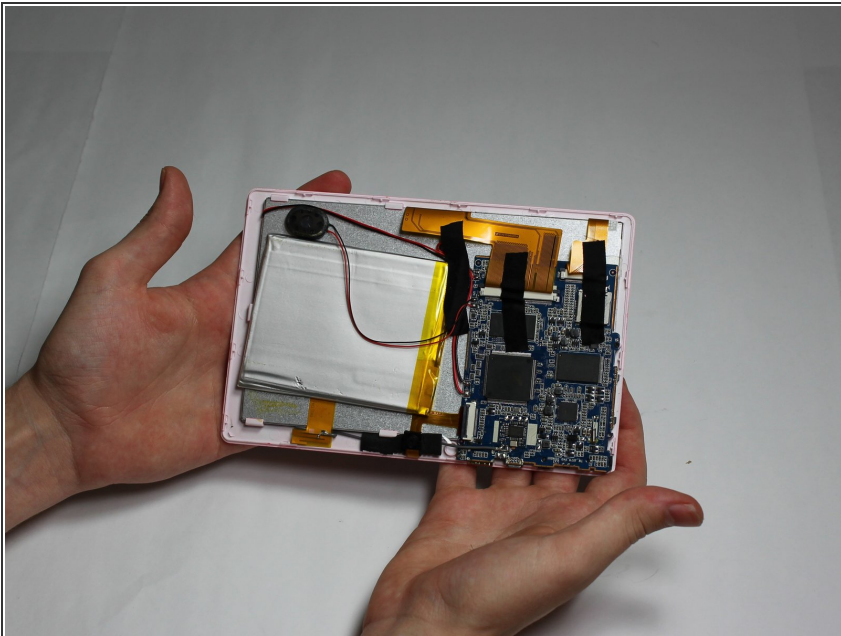
- [iFixit Opening Tools](#) (1)
 - [Heavy-Duty Spudger](#) (1)
 - [Soldering Iron](#) (1)
-

Step 1 — Back Panel



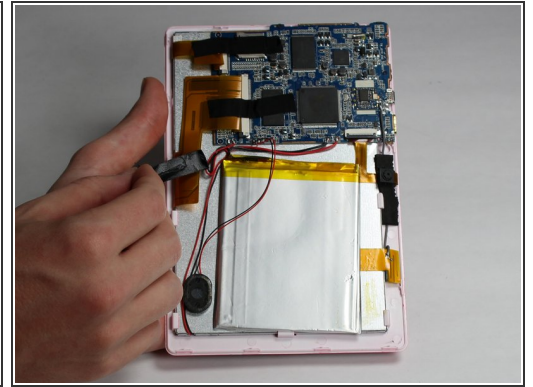
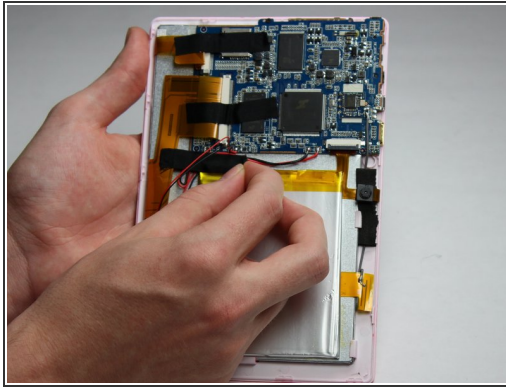
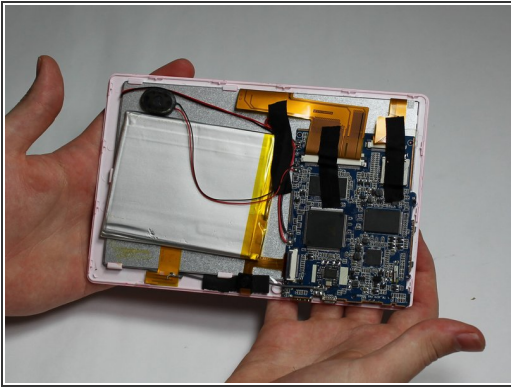
- Insert your Plastic Opening Tool into the crease between the front panel and back panel.
- Slide the Opening Tool around the entire device. As you progress, you should see the device open.

Step 2



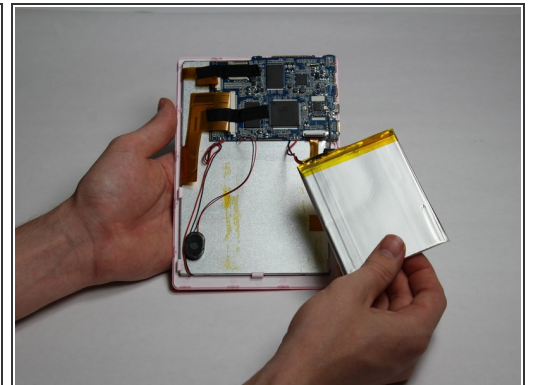
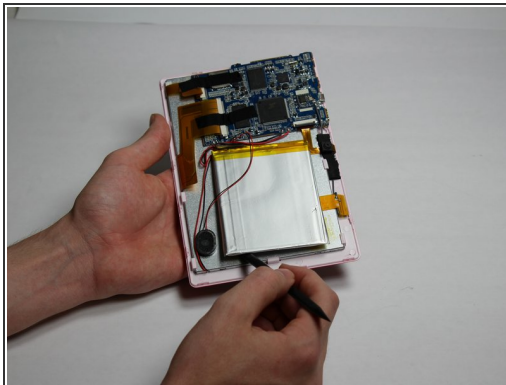
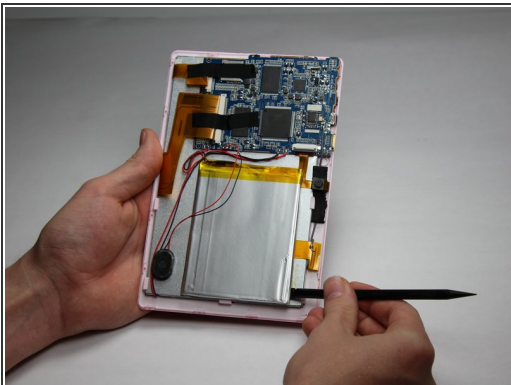
- Carefully turn the device over.
- Lay the back panel aside so you can see the device's parts.

Step 3 — Battery



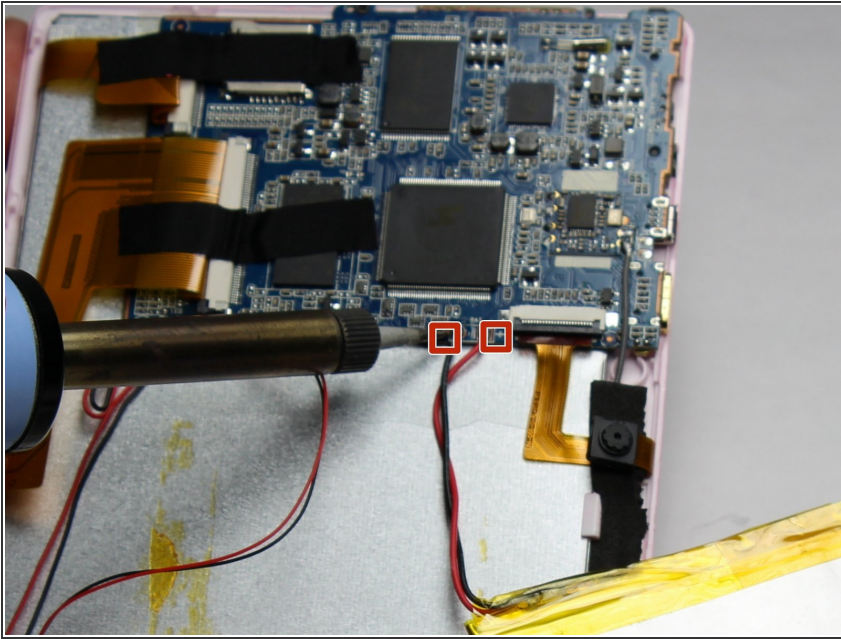
- Place your finger at the end of the tape closest to the battery.
- Peel the tape towards the flex cables to free the battery wires.

Step 4



- Using the spudger tool, place the tool along an edge of the battery.
- ⚠ Be careful not to bend or break the battery! Batteries contain hazardous materials.
- Move the spudger around the edges of the battery to detach it from the tablet.

Step 5



- ⚠ Soldering irons get very hot! Be careful when handling one. If you'd like a tutorial on how to use one, click [here](#).
- Using a soldering iron, desolder both of the battery wires. The battery's wires are located to the left of the camera's flex cable.
- Remove the battery.

To reassemble your device, follow these instructions in reverse order.