



Chuwi Hi9 Pro CWI548 Battery Replacement

Replace an aging battery that does not quite have the life it used to have.

Written By: Calvin Hodgson



INTRODUCTION

Battery no longer lasting a full day? Tried factory reset and still have the same battery life? If you answered yes to any of these then a battery replacement could very well do the trick. Requiring just a few minutes of time, you will be up and running with a recharged tablet ready for what ever is next.



TOOLS:

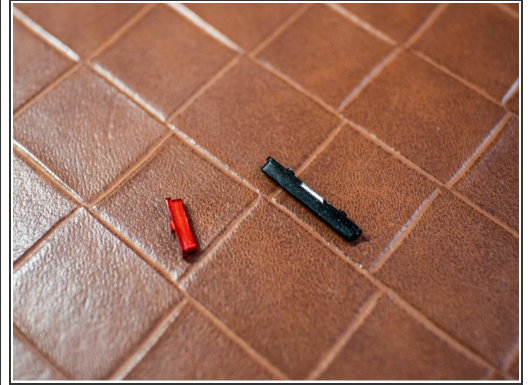
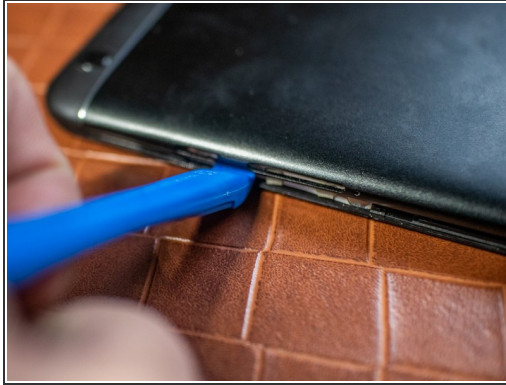
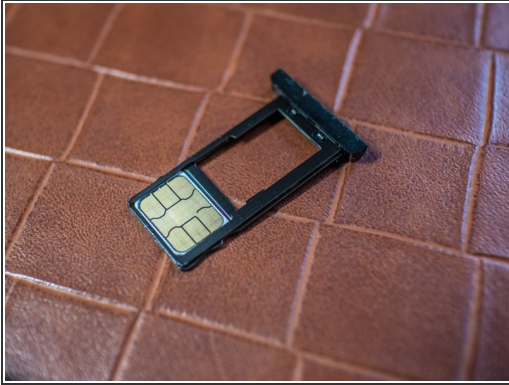
- [Spudger](#) (1)
- [SIM Card Eject Tool](#) (1)
- [Soldering Iron](#) (1)
- [Solder](#) (1)



PARTS:

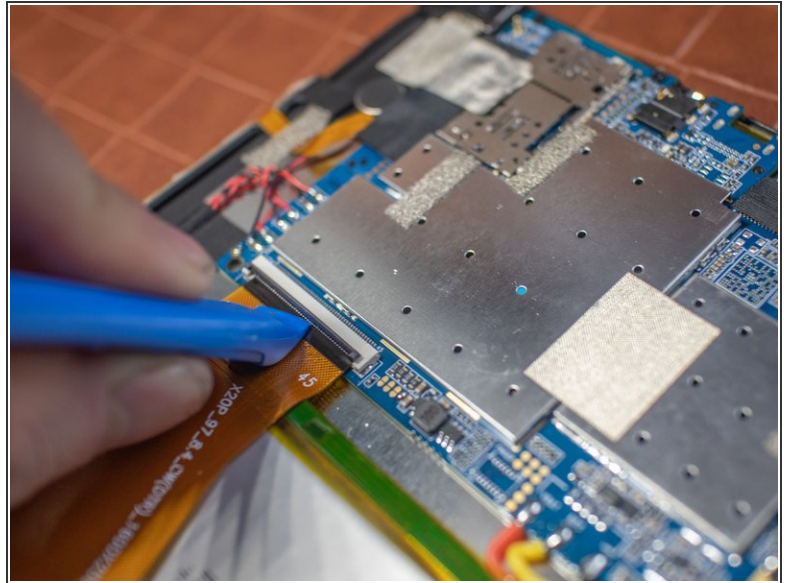
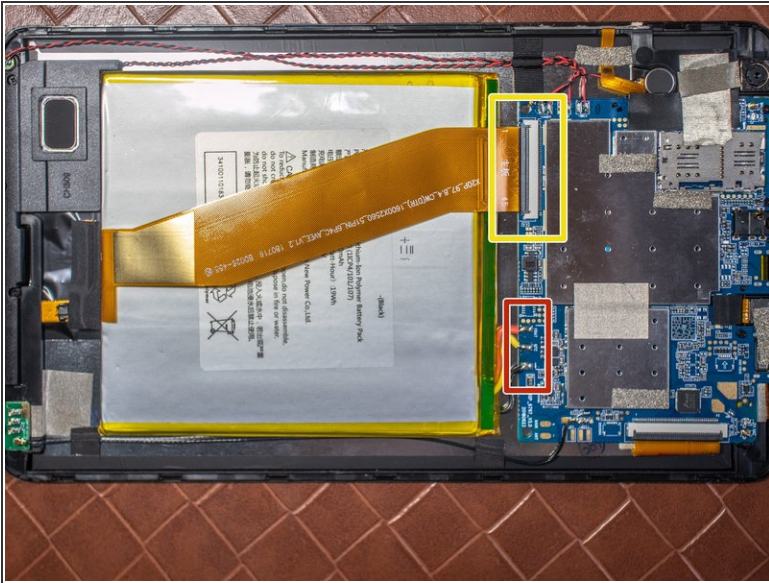
- [Battery](#) (1)

Step 1 — Getting Inside



- Remove the SIM/SD tray.
- Carefully pry and lift up around the edge of the device.
- Take note of the two buttons and keep them in a secure place until reassembly.

Step 2 — Battery Replacement



- Lift up the LCD cable latch and gently pull the cable out.
- ⚠ There are three cables that need desoldered. Extreme caution must be taken when completing this step as any part of wires that aren't insulated touch it could cause fire.
- ⚠ Remove the strong adhesive holding the battery in place. Care should be taken to avoid bending which could lead to thermal runaway.
- Solder the three cables to the correct locations.
- Pull out the old battery carefully and swap in for a new one.

Step 3 — Buttons



- When reassembling, be sure to place the buttons back into their cut outs before reattaching the back plate.

To reassemble your device, follow these instructions in reverse order but make sure that the buttons are in place before closing it shut.