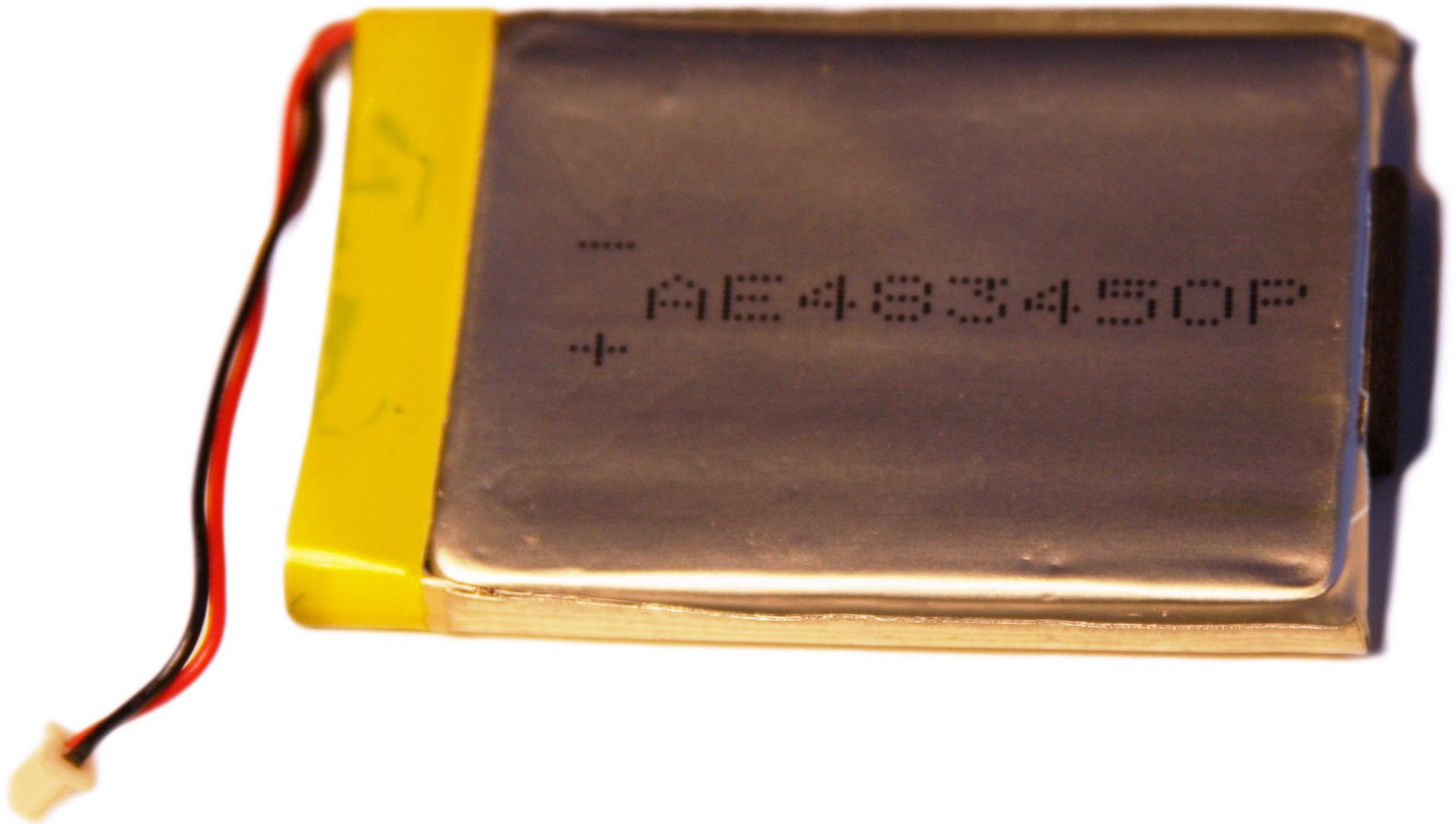




Cirago M9030 Battery Replacement

This guide shows how to install the battery.

Written By: Ryan Sutardji

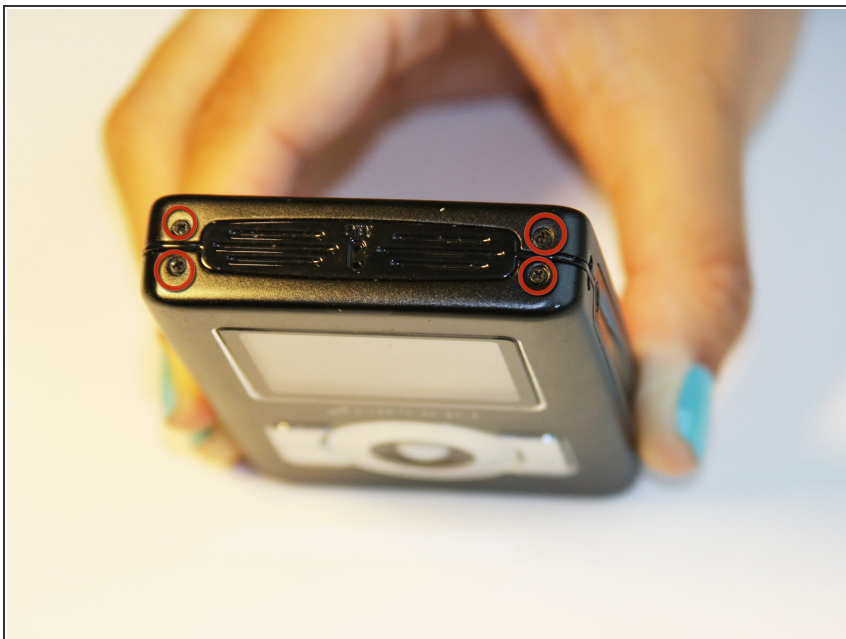




TOOLS:

- [iFixit Opening Tools](#) (1)
 - [Tweezers](#) (1)
 - [Phillips #00 Screwdriver](#) (1)
-

Step 1 — Cover



- Using a Phillips #00 screwdriver, remove the four 1.1mm long screws from the top side.

Step 2



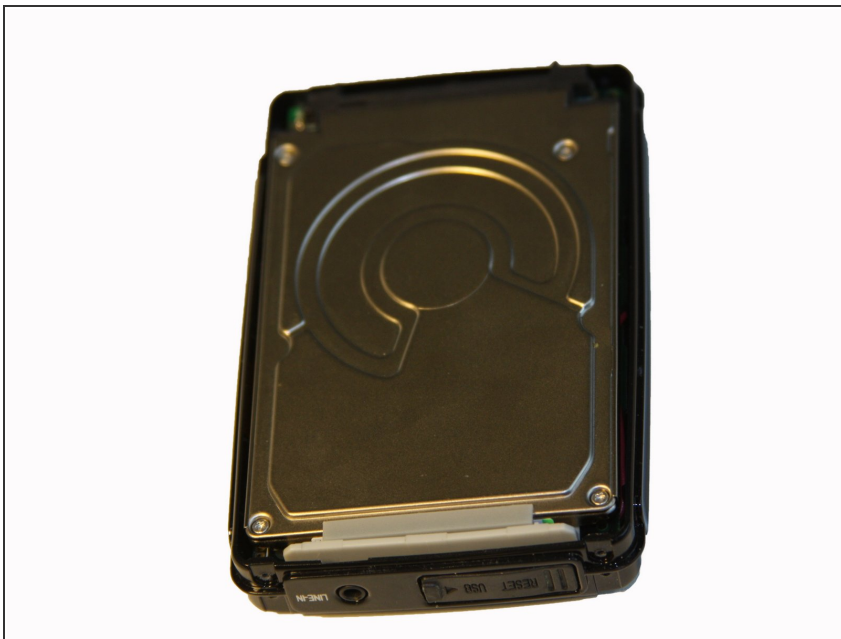
- Using a Phillips #00 screwdriver, remove the four 1.1mm long screws from the bottom side.
- ⓘ Remove the warranty sticker across the bottom.

Step 3



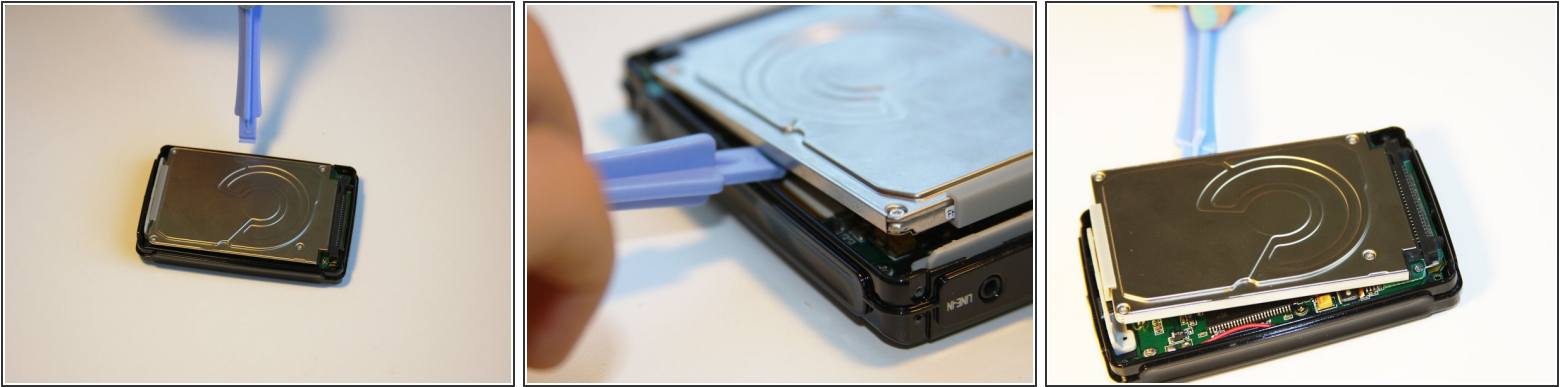
- Gently lift off the back and front casing.
- ⓘ The outer shell should easily come apart.

Step 4 — Hard Drive



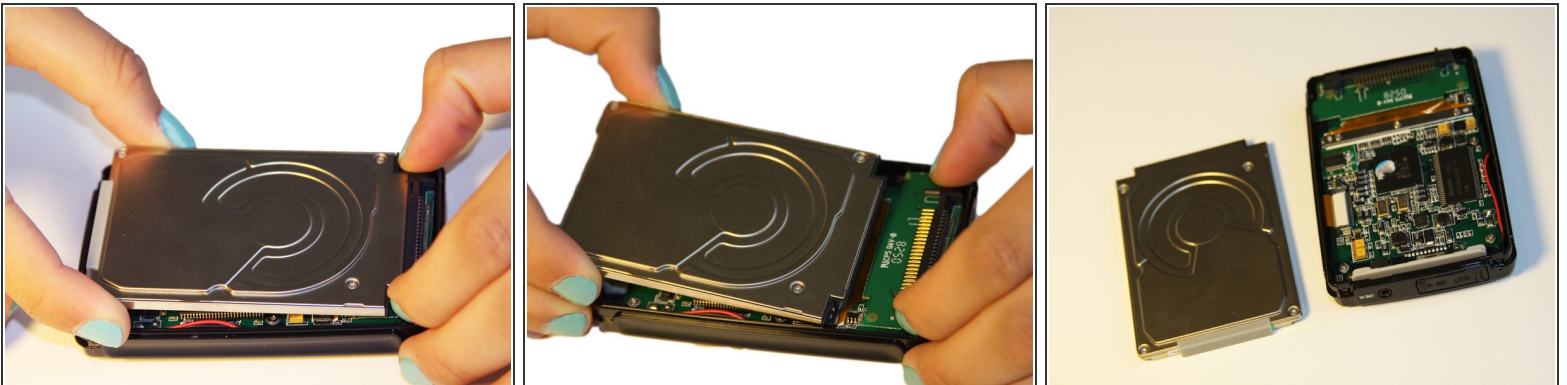
- Make sure the device screen is face down.

Step 5



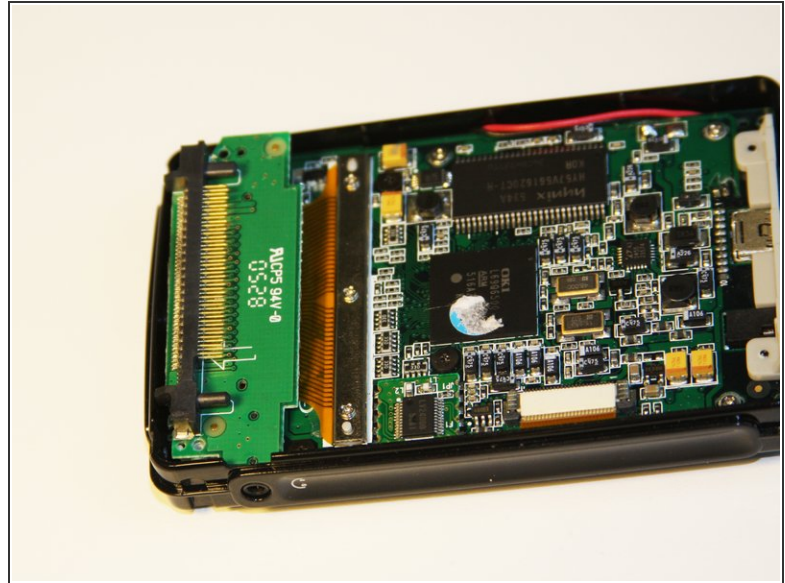
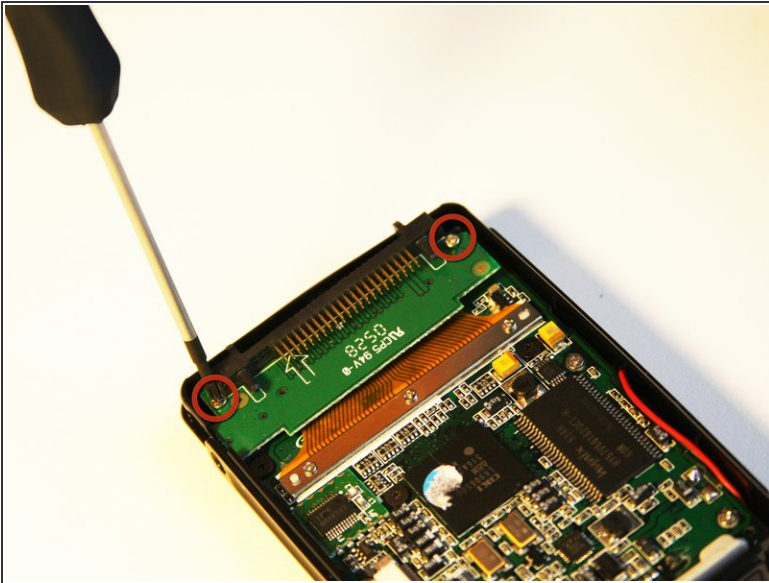
- Using the plastic opening tool, wedge the tool underneath the bottom left edge of the hard drive.
- Raise the bottom edge of the hard drive 15 degrees up from the device.

Step 6



- Place fingers on the IDE connectors and gently slide the hard drive out from the IDE module.

Step 7 — IDE Connector



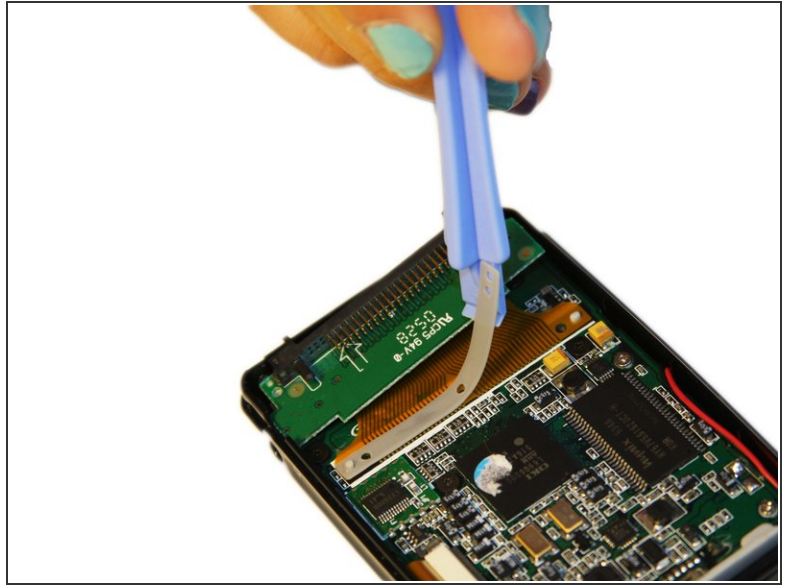
- Using the Phillips #00 screwdriver, unscrew the two 1.5mm long screws holding the IDE connector to the motherboard.

Step 8



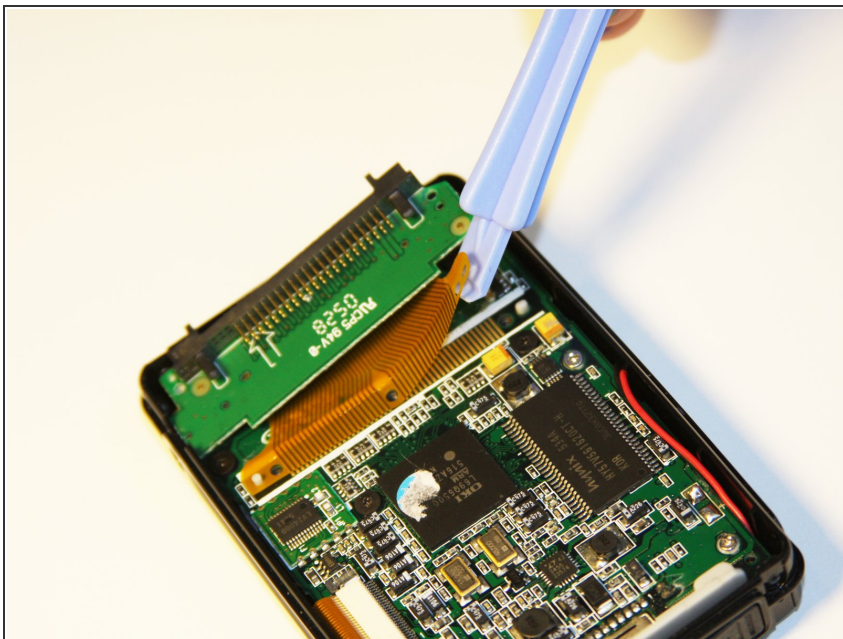
- Using the Phillips #00 screwdriver, unscrew the three 1.5mm long screws on the metal bracket.

Step 9



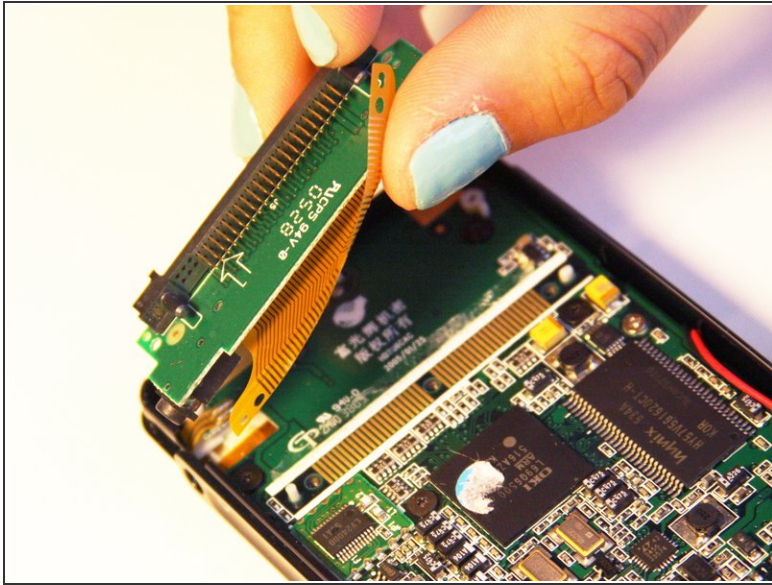
- Using the plastic opening tool, completely lift the metal bracket off of the motherboard.
- Using the plastic opening tool, completely lift the rubber insulator off of the motherboard.

Step 10



- Using the plastic opening tool, completely lift the ribbon off of the motherboard.

Step 11



- Completely remove the IDE connector from the device.

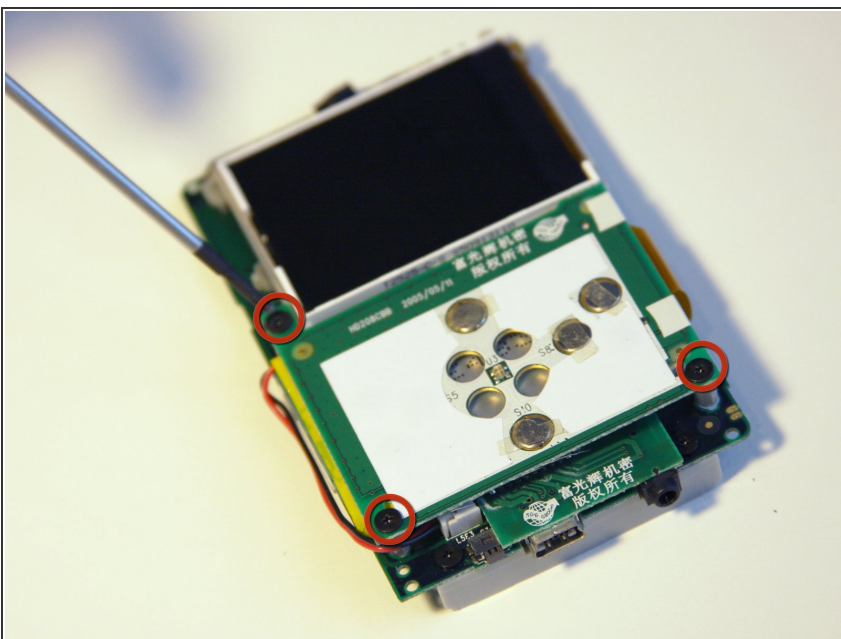
⚠ The audio jack is attached to the IDE connector. Pull at a 45 degree angle from the audio jack.

Step 12 — Motherboard



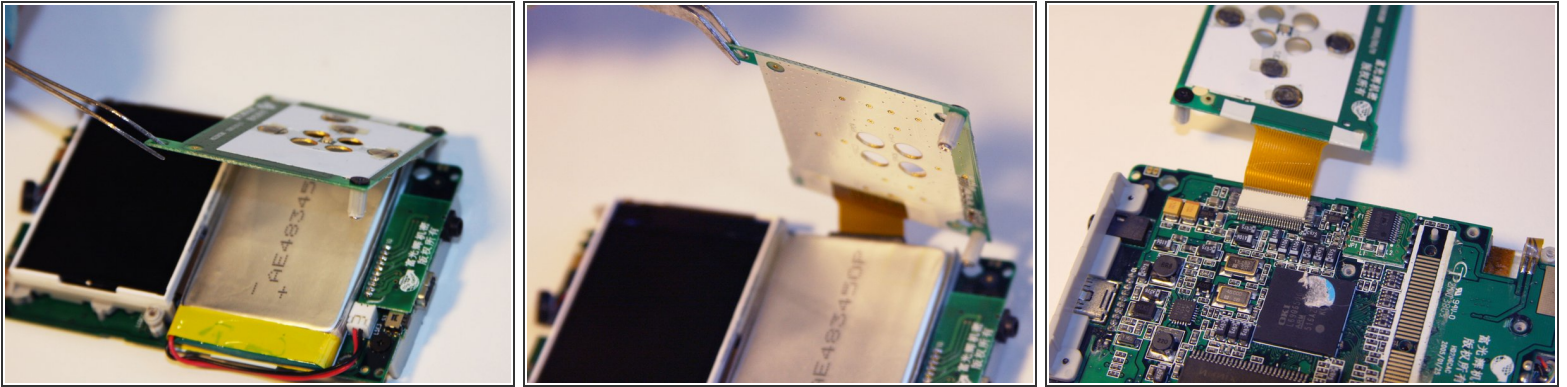
- Using the plastic opening tool, wedge the tool underneath the top edge of the motherboard.
- Completely remove the motherboard.
- ⓘ The motherboard should slide out easily.

Step 13 — Button Module




- Set aside the front cover.
- Flip over the motherboard.
- Using the Philips #00 screwdriver, remove the three 4mm long screws holding down the button module.

Step 14

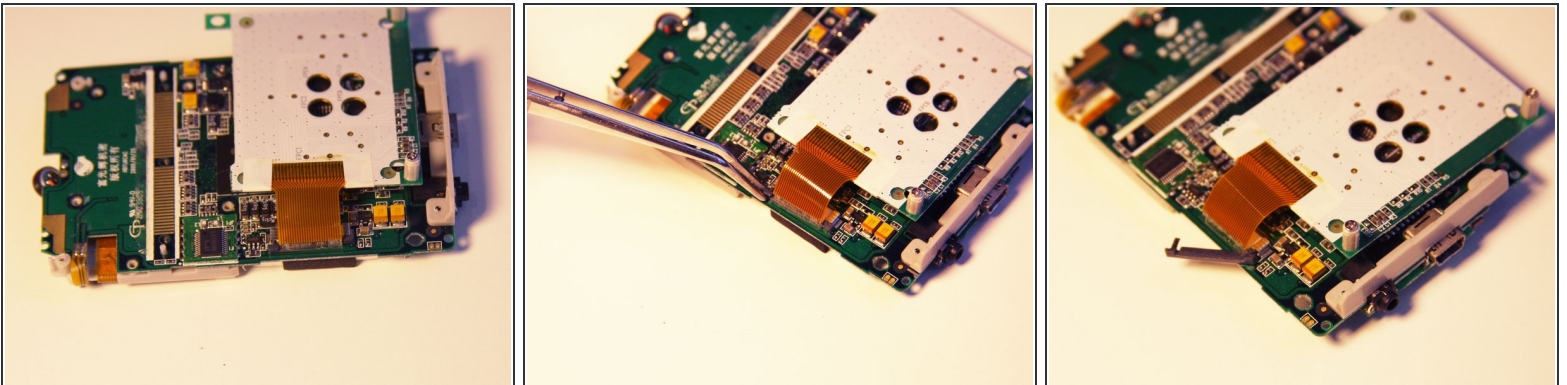



- Using the tweezers, lift up the button module to a 180 degree angle.

 Leave the button module attached by the ribbon.

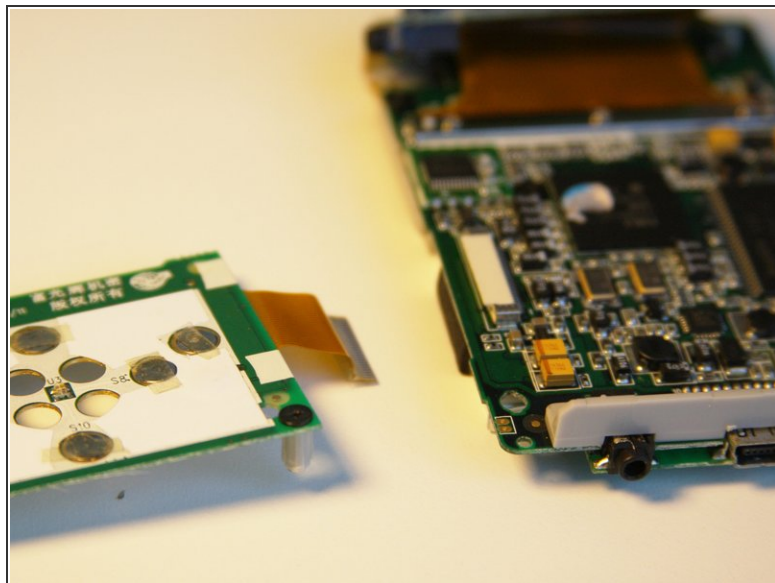
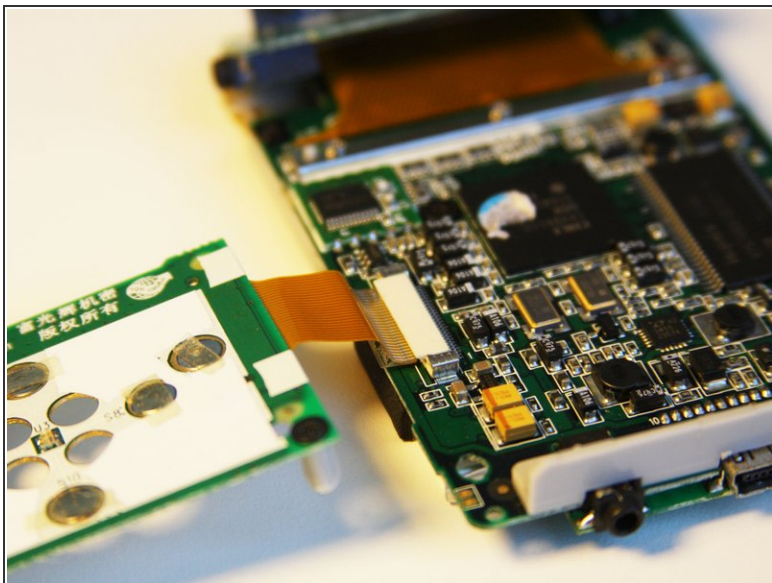
- Flip over the motherboard with the button module still attached.

Step 15



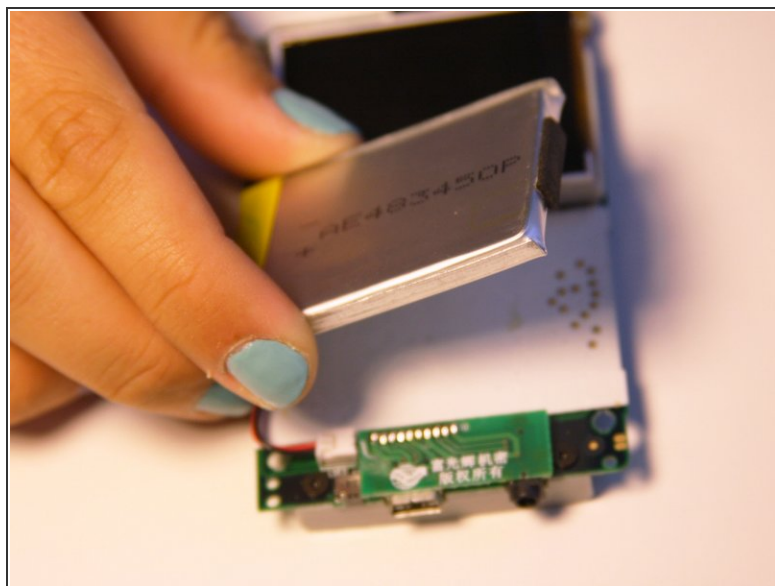
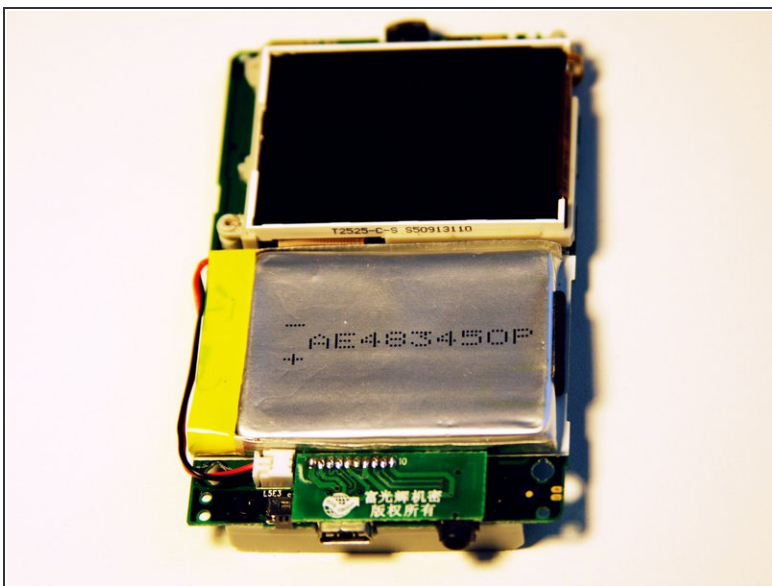
- Fold the button module over the motherboard.
 - Using the tweezers, remove the ribbon pin.
-  The ribbon pin should snap completely off of the motherboard.

Step 16



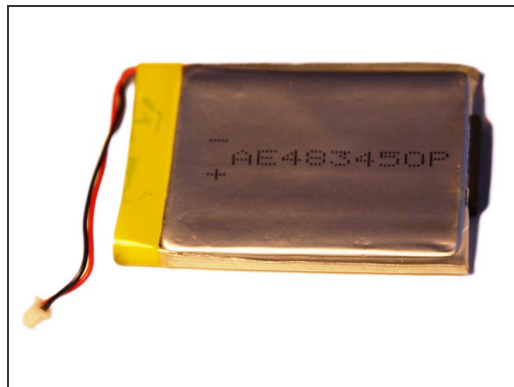
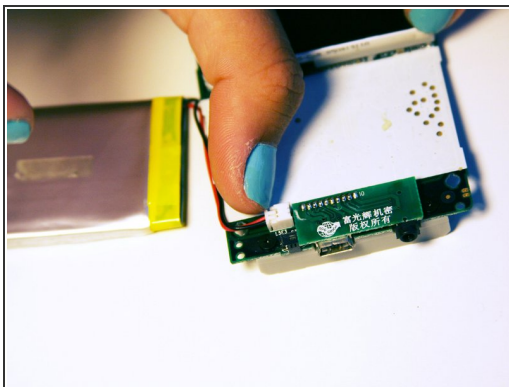
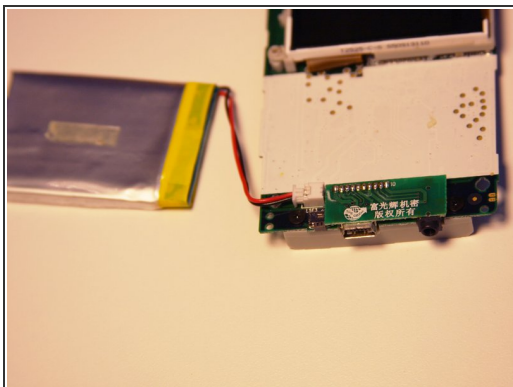
- The ribbon should easily detach from the motherboard.

Step 17 — Battery




- Flip over the motherboard so the screen faces up.
 - Carefully slide the battery off of the motherboard.
- ⚠ Leave the battery cable connected to the motherboard.

Step 18



- Place two fingers on the battery connectors and gently pull the power cable connector completely out from the motherboard.

 Do not pull directly on the wire as it may damage the connector.

To reassemble your device, follow these instructions in reverse order.