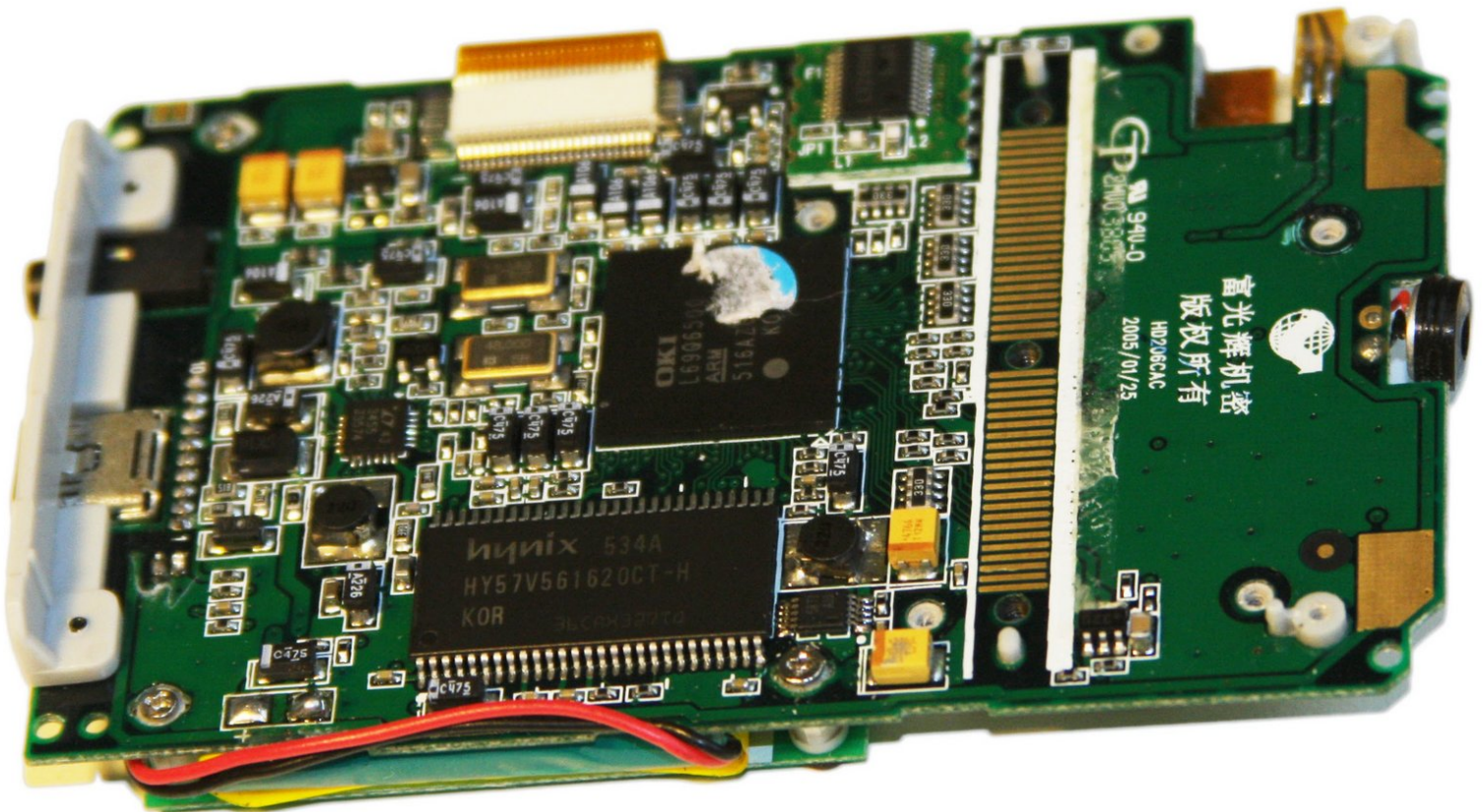




Cirago M9030 Motherboard Replacement

This guide shows how to install the motherboard.

Written By: Ryan Sutardji

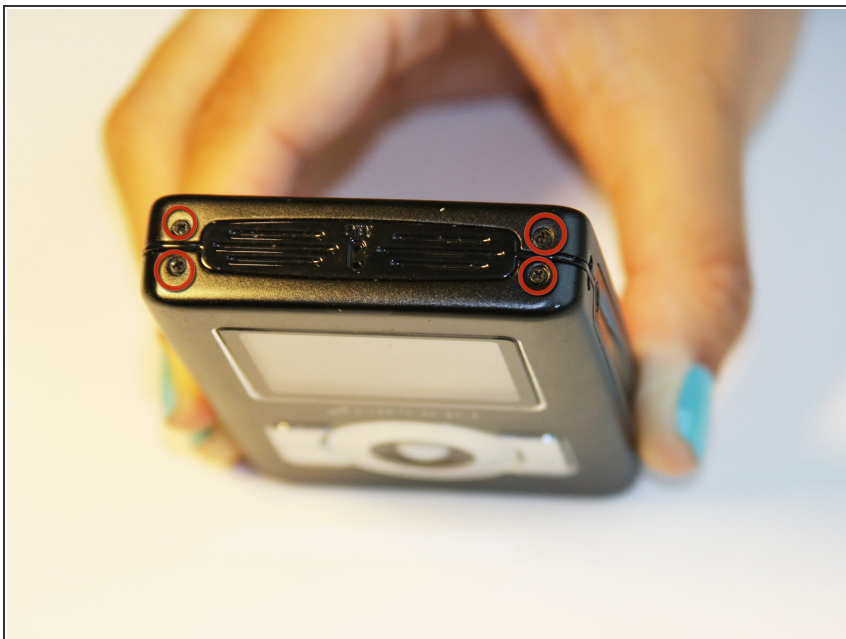




TOOLS:

- [iFixit Opening Tools](#) (1)
- [Phillips #00 Screwdriver](#) (1)

Step 1 — Cover



- Using a Phillips #00 screwdriver, remove the four 1.1mm long screws from the top side.

Step 2



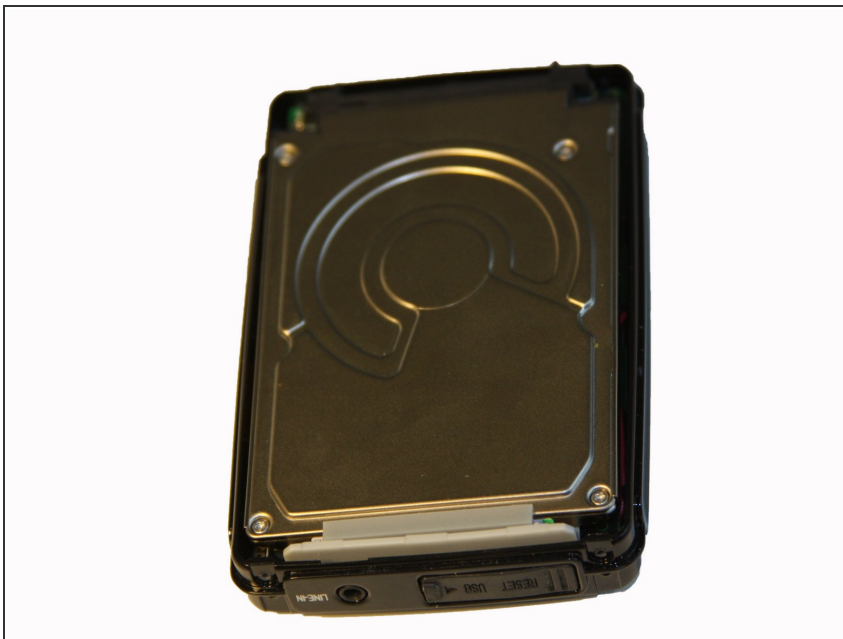
- Using a Phillips #00 screwdriver, remove the four 1.1mm long screws from the bottom side.
- ⓘ Remove the warranty sticker across the bottom.

Step 3



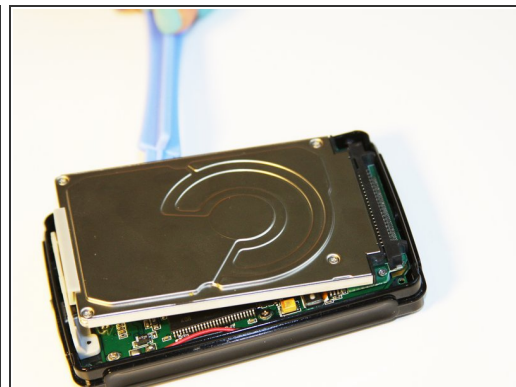
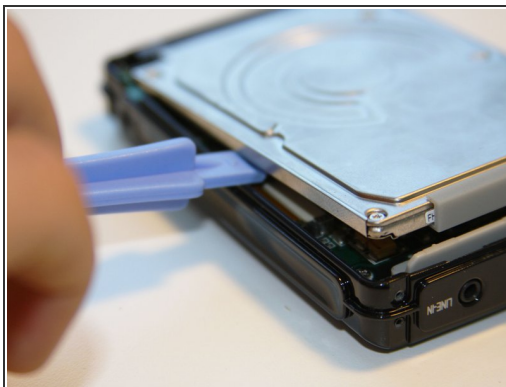
- Gently lift off the back and front casing.
- ⓘ The outer shell should easily come apart.

Step 4 — Hard Drive



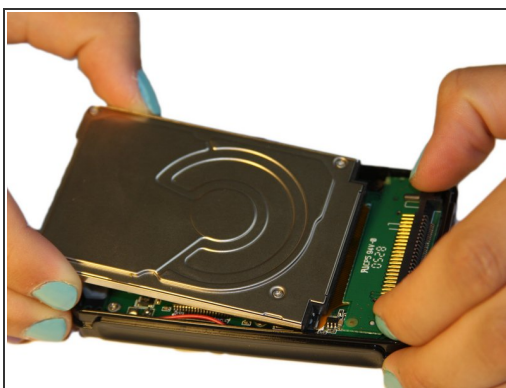
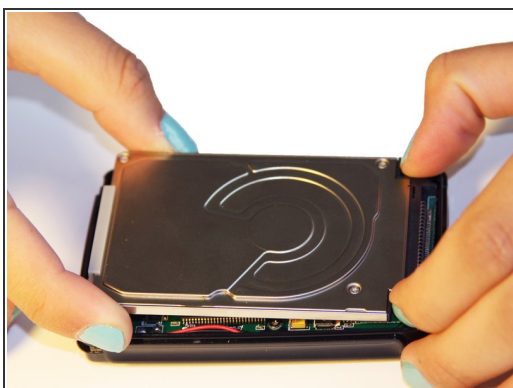
- Make sure the device screen is face down.

Step 5



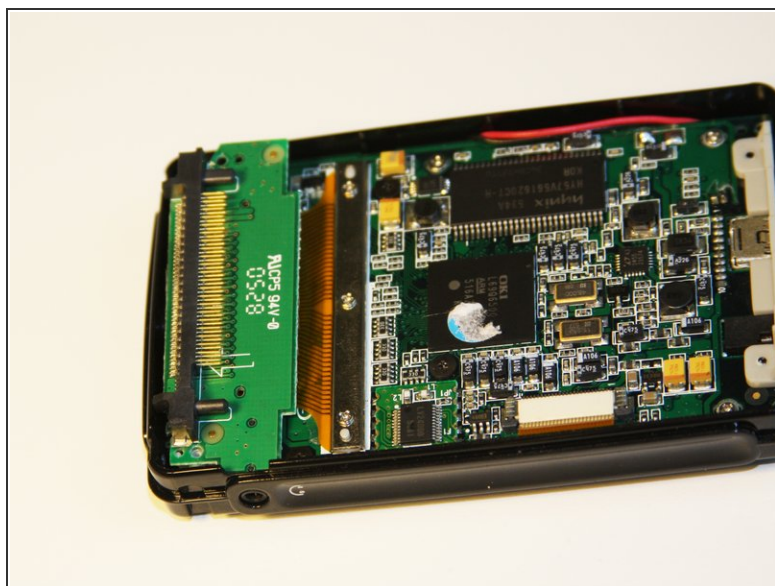
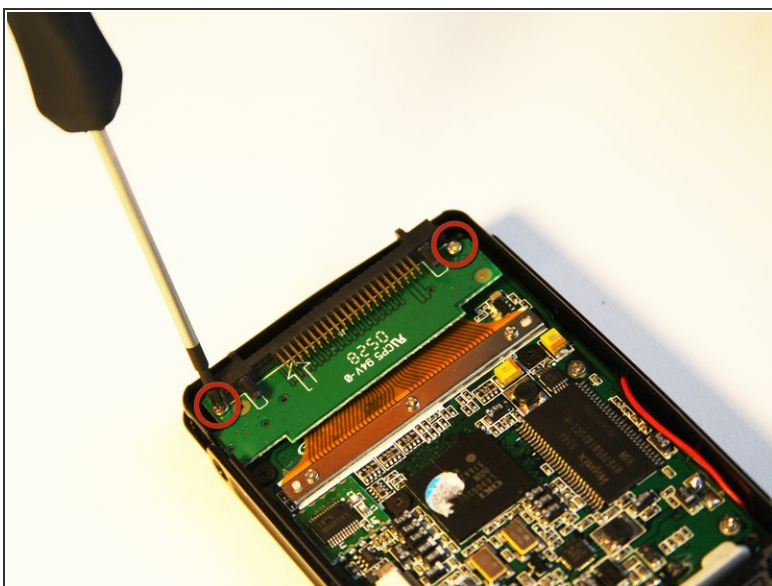
- Using the plastic opening tool, wedge the tool underneath the bottom left edge of the hard drive.
- Raise the bottom edge of the hard drive 15 degrees up from the device.

Step 6



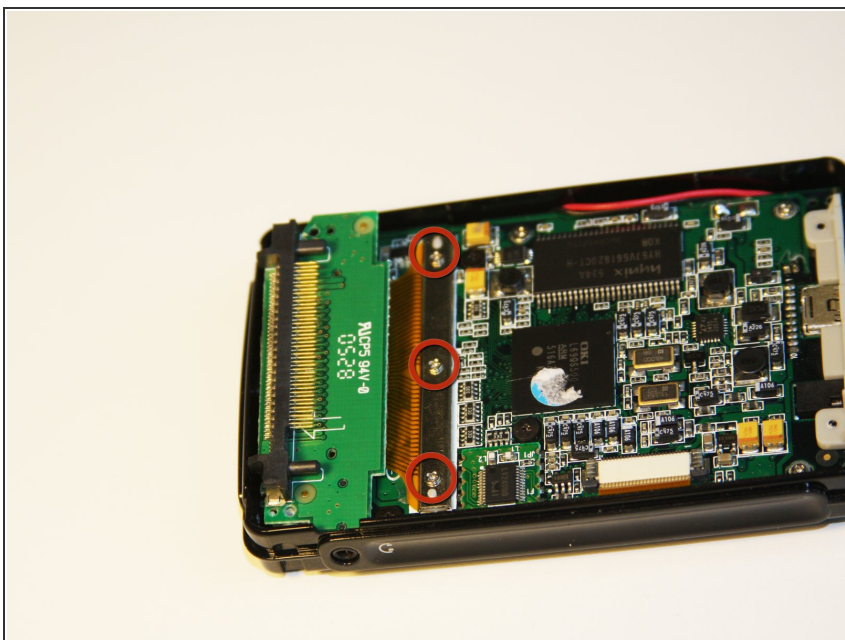
- Place fingers on the IDE connectors and gently slide the hard drive out from the IDE module.

Step 7 — IDE Connector



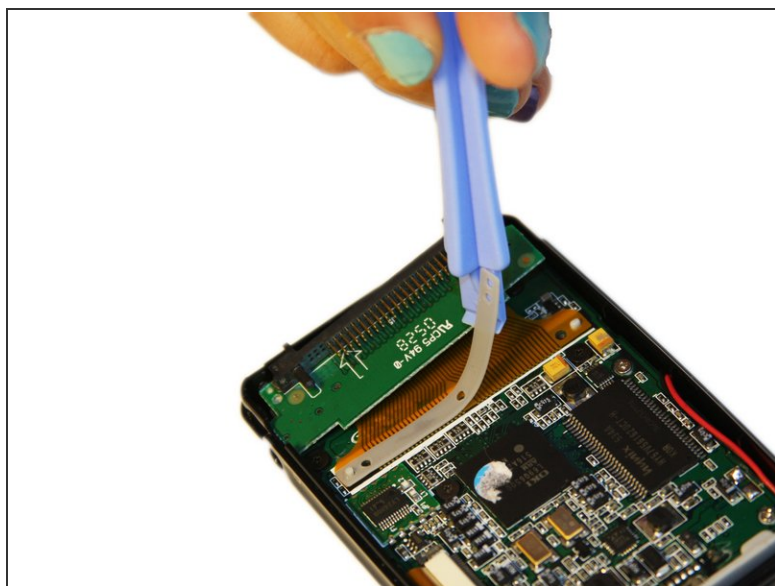
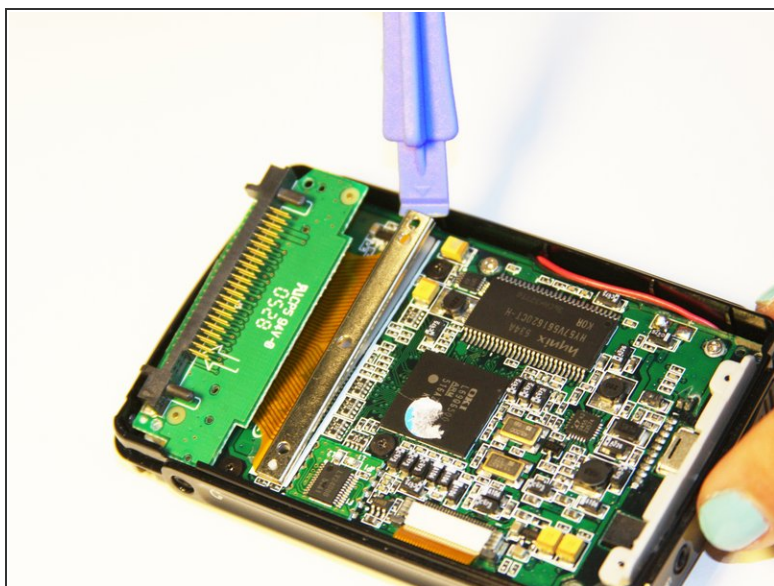
- Using the Phillips #00 screwdriver, unscrew the two 1.5mm long screws holding the IDE connector to the motherboard.

Step 8



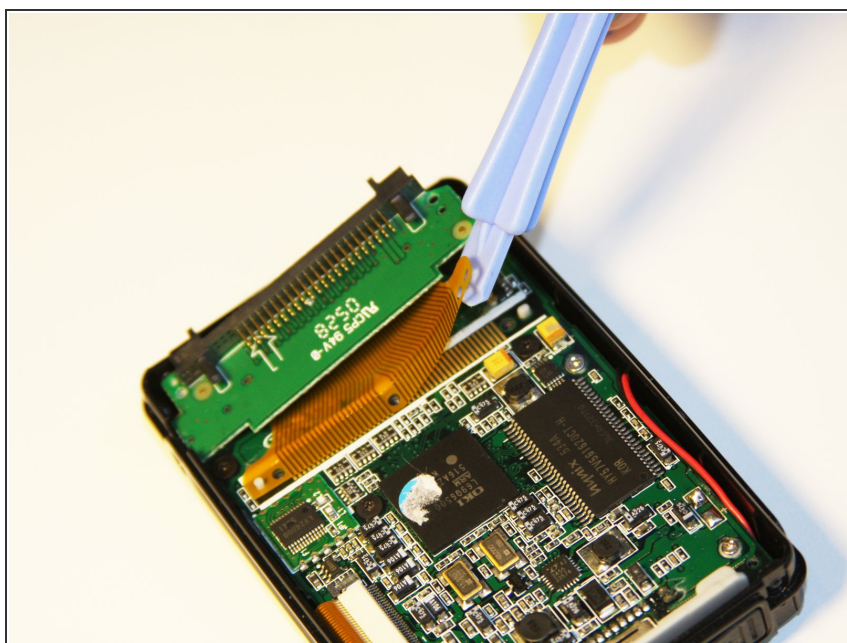
- Using the Phillips #00 screwdriver, unscrew the three 1.5mm long screws on the metal bracket.

Step 9



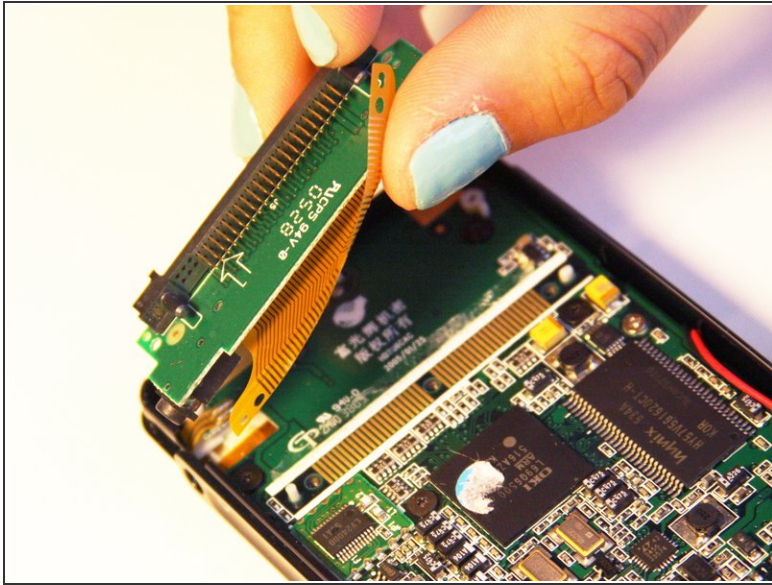
- Using the plastic opening tool, completely lift the metal bracket off of the motherboard.
- Using the plastic opening tool, completely lift the rubber insulator off of the motherboard.

Step 10



- Using the plastic opening tool, completely lift the ribbon off of the motherboard.

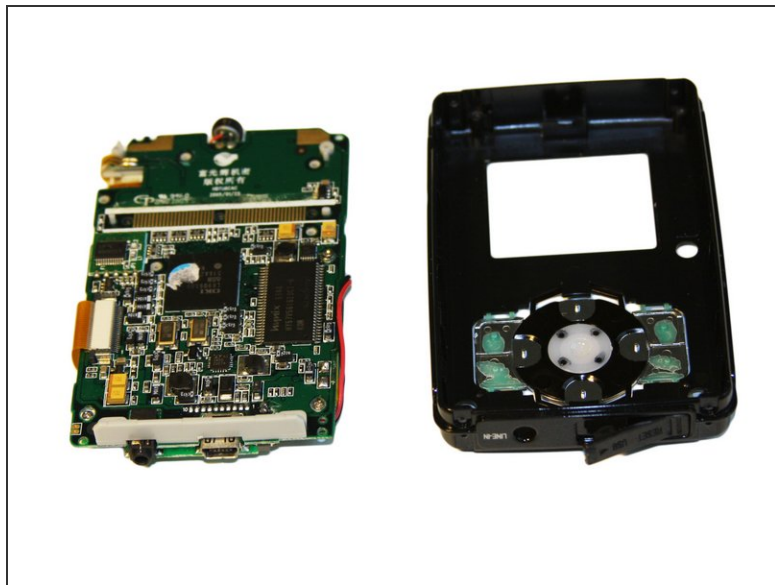
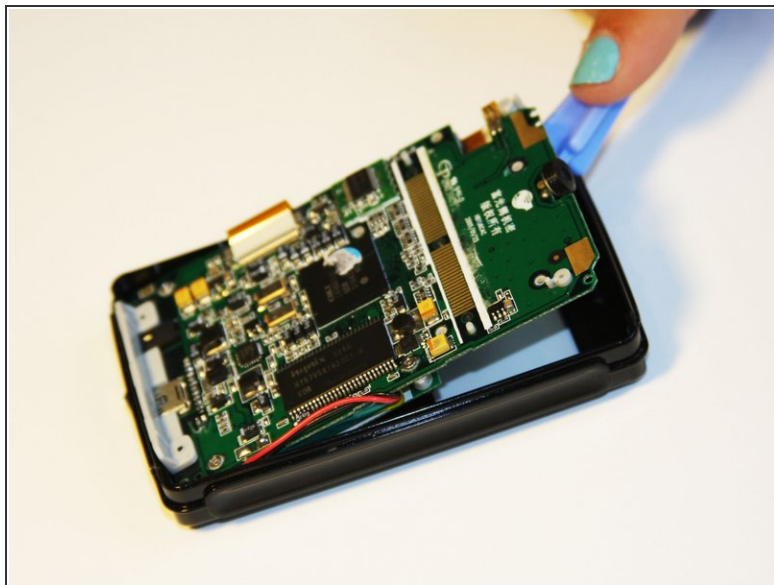
Step 11



- Completely remove the IDE connector from the device.

⚠ The audio jack is attached to the IDE connector. Pull at a 45 degree angle from the audio jack.

Step 12 — Motherboard



- Using the plastic opening tool, wedge the tool underneath the top edge of the motherboard.
- Completely remove the motherboard.
- ⓘ The motherboard should slide out easily.

To reassemble your device, follow these instructions in reverse order.