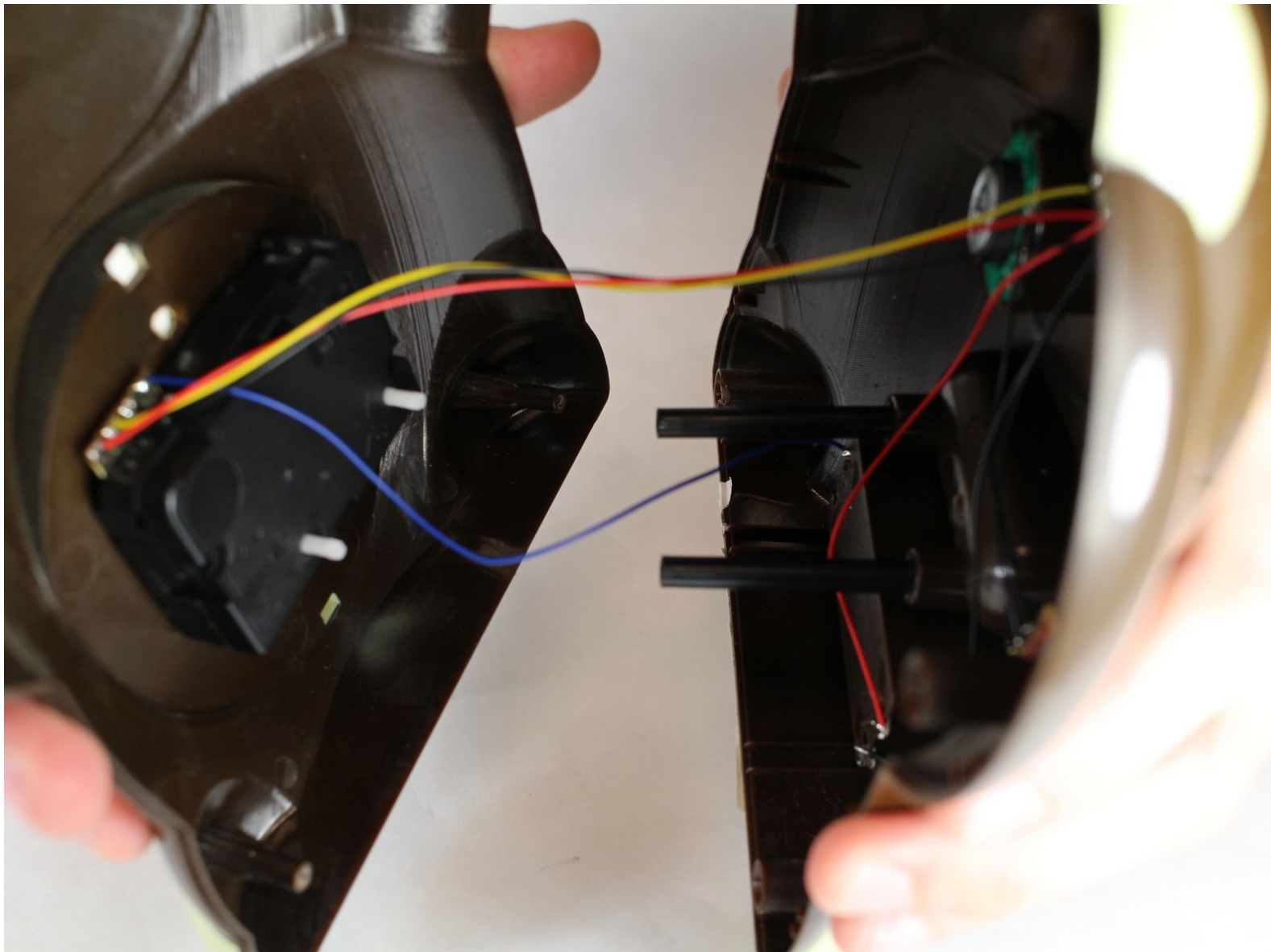




Circo Monkey Alarm Clock Clock Motor Replacement

We will show how to open the clocks motor to control that controls the hand

Written By: Frank

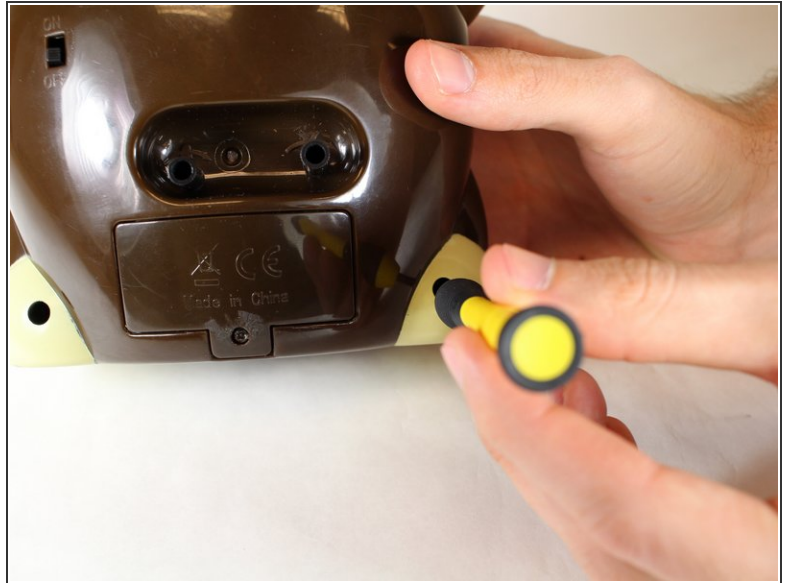




TOOLS:

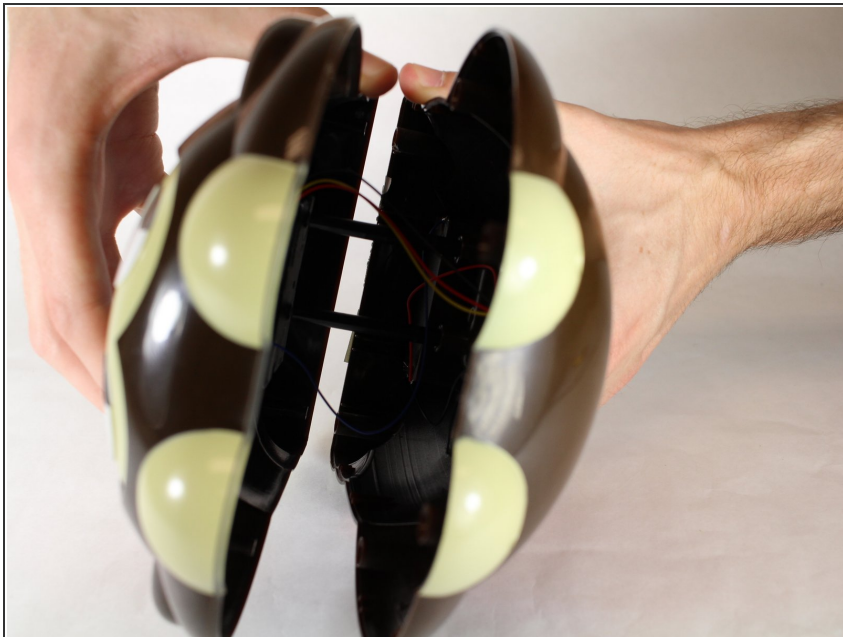
- [Phillips #00 Screwdriver](#) (1)
-

Step 1 — Screw Removal



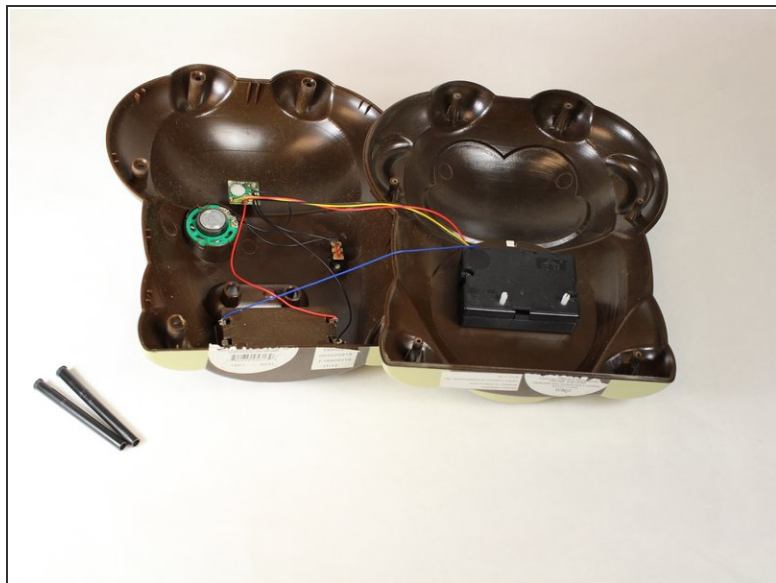
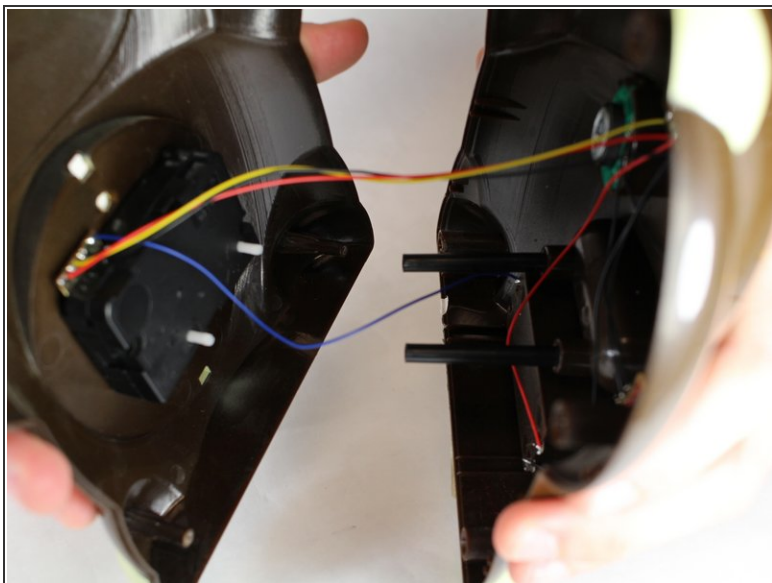
- Remove all six 7.3 mm screws with a #00 Phillips head screwdriver.

Step 2 — Splitting the Shell in Half



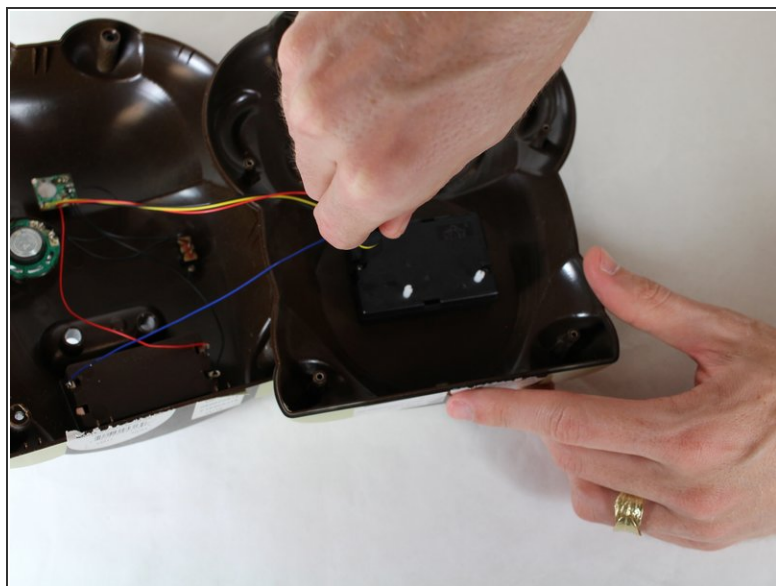
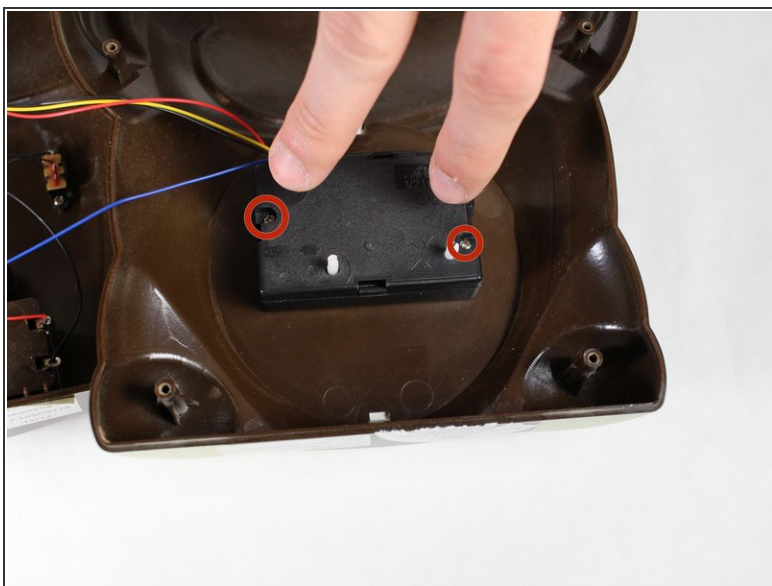
- Firmly pull each half apart.

Step 3 — Clock Motor



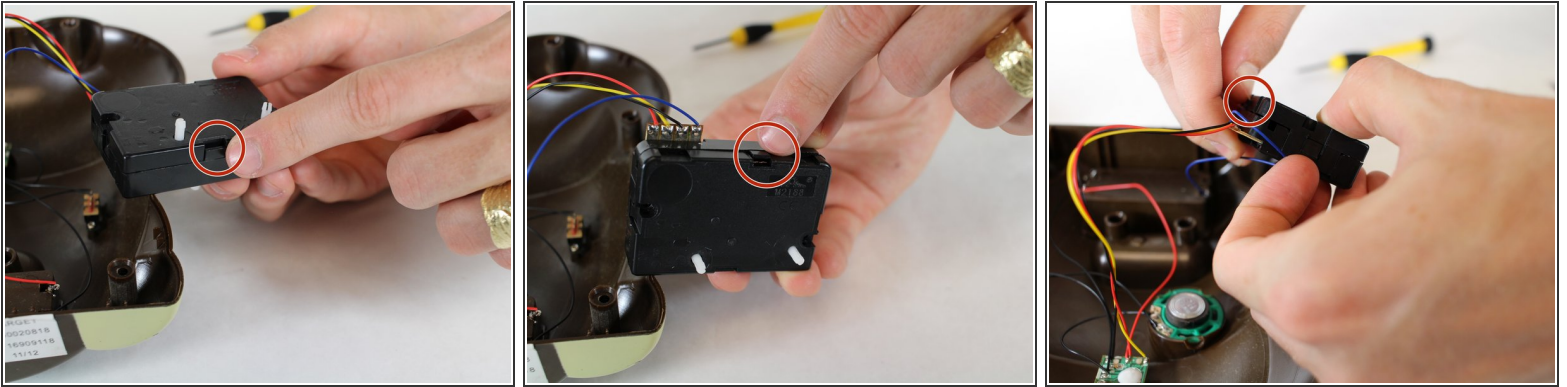
- Once the clock is apart, carefully pull both halves until the clock is in two separate halves.

Step 4



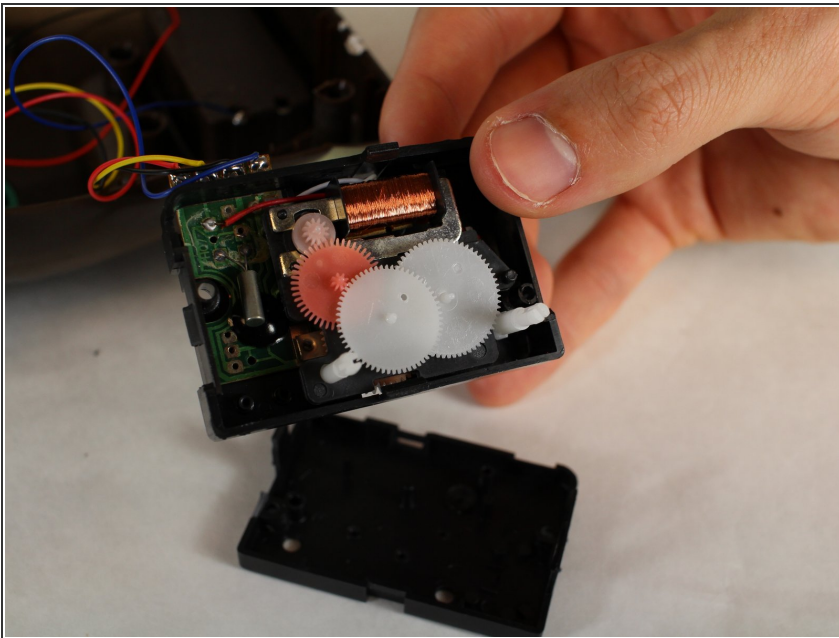
- Unscrew the two 2 mm screws with a #00 Phillips Head screwdriver.

Step 5



- Pull off the clock motor housing and un-clip the 4 clips on each side.

Step 6



- Repair any loose or misplaced gears or wiring.

To reassemble your device, follow these instructions in reverse order.