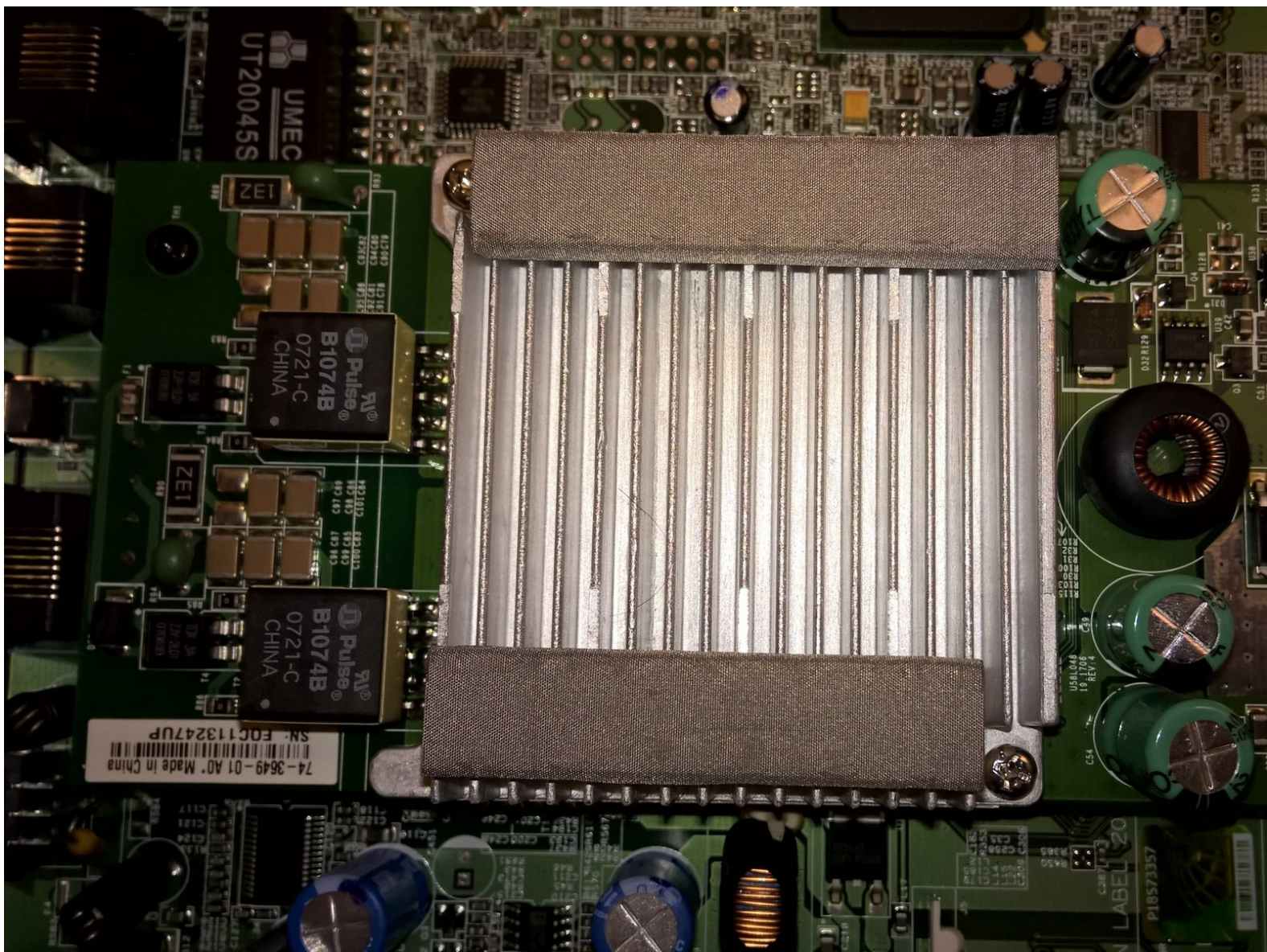




Cisco 878 Integrated Services Router SHDSL Filter Module Disassembly

Written By: Jiri Altman

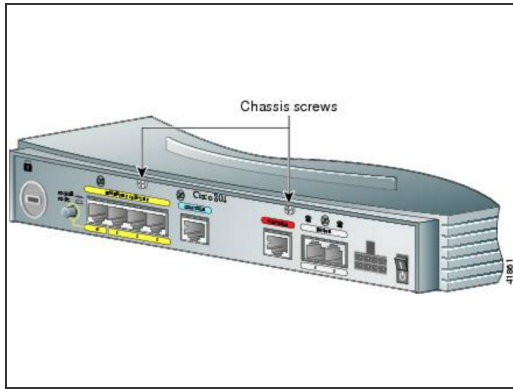








TOOLS:

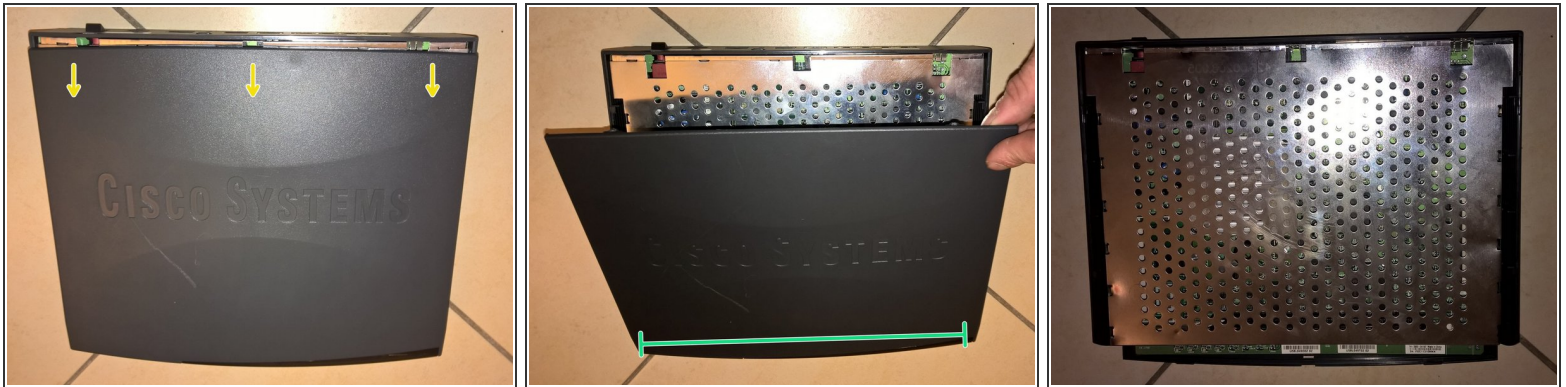
- [Phillips #1 Screwdriver](#) (1)
-

Step 1 — Remove the two screws on back side



-  **Only trained and qualified personnel should be allowed to install, replace, or service this equipment!**
-  **During this procedure, wear grounding wrist straps to avoid ESD damage to the card. Do not directly touch the backplane with your hand or any metal tool, or you could shock yourself!**
-  **Make sure that the power switch is turned to standby and that the power supply cable is disconnected. Disconnect all cables from the router back panel.**
-  Use the Phillips #1 Screwdriver to remove the two screws on back side of the device.

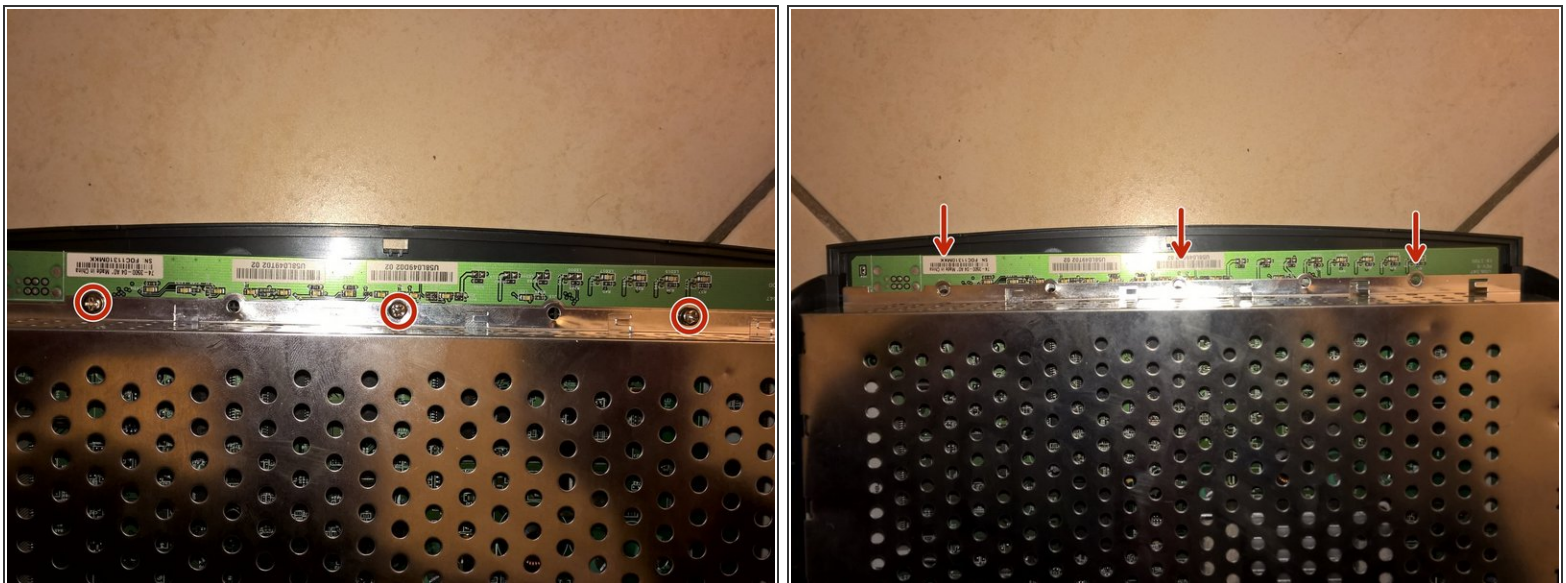
Step 2 — Remove top cover



1. Gently push the top cover of the router away from you.
2. Lift it up top cover from the bottom of the router.
3. Remove top cover from the device.

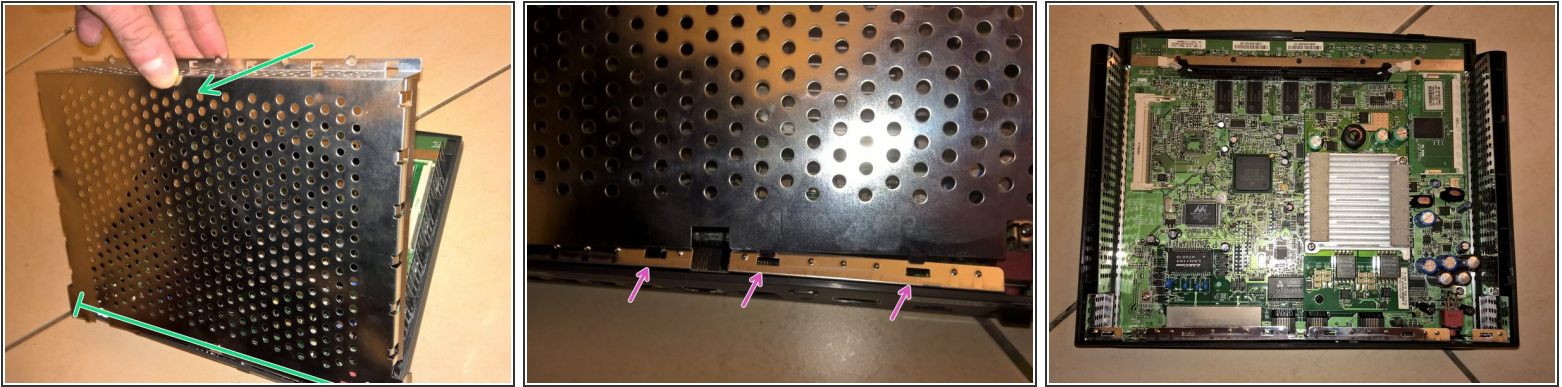
☒ Place the router bottom on an antistatic mat.


Step 3 — Remove the three screws on front side



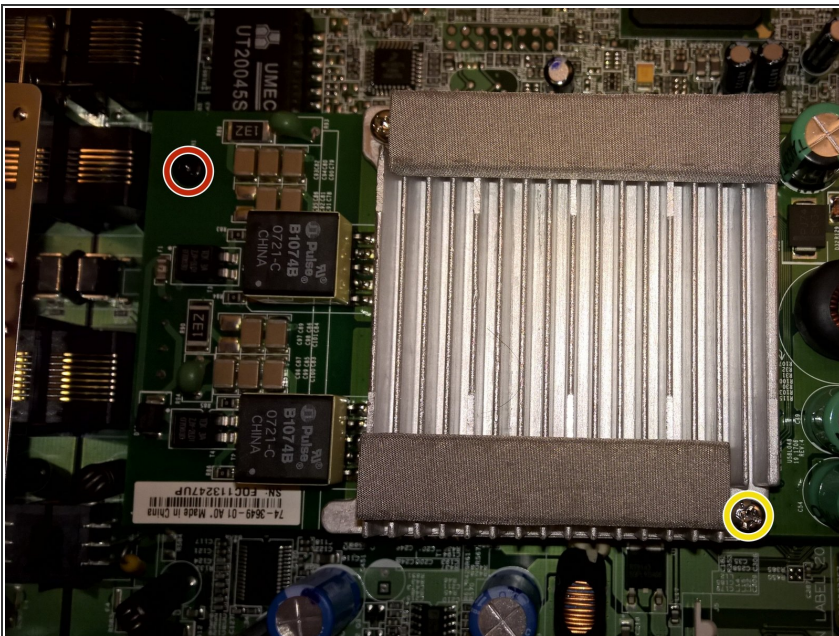
- Use the Phillips #1 Screwdriver to remove the three screws on front side of the device.


Step 4 — Remove the inner metal shield



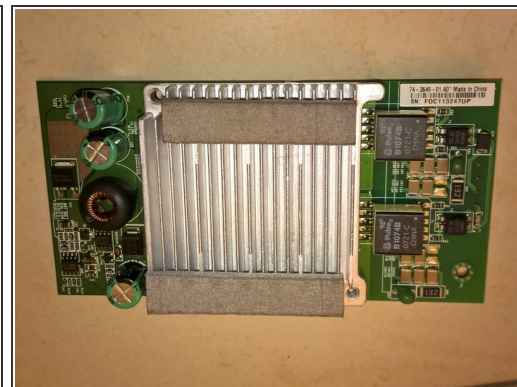
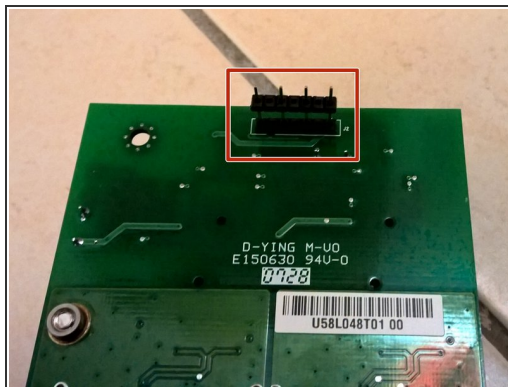
1. Gently lift up inner metal shield from the bottom of the router.
 2. Remove inner metal shield from the device (see the anchors on the picture).
-  Be careful and do not distort the plates!

Step 5 — Remove black and silver screws



1. Use the Phillips #1 Screwdriver to remove the black screw.
 2. Use the Phillips #1 Screwdriver to remove the silver screw as shown on picture.
-  You should remove just only one silver screw - the second one is holding just cooling plate.

Step 6 — Remove CPU module



- Gently pull the module up to disconnect two connectors underneath.
- ⓘ Be careful and don't damage 4-pin connector (marked RED).

To reassemble your device, follow these instructions in reverse order.