



Cisco 878 Integrated Services Router Teardown

Written By: Jiri Altman





TOOLS:

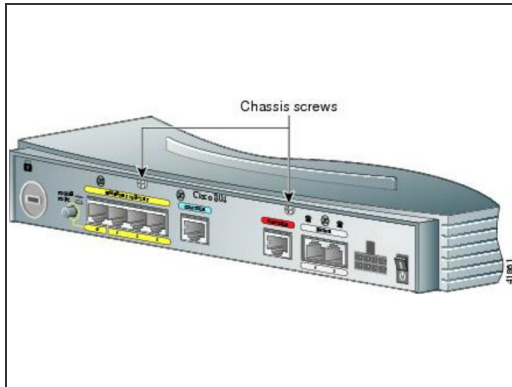
- [Phillips #1 Screwdriver](#) (1)






PARTS:

- [Cisco 4MB StrataFlash Memory module \(MEM870-4F=\)](#) (1)
- [Cisco 8MB StrataFlash Memory module \(MEM870-8F=\)](#) (1)

Step 1 — Remove the two screws on back side



-  **Only trained and qualified personnel should be allowed to install, replace, or service this equipment!**
-  **During this procedure, wear grounding wrist straps to avoid ESD damage to the card. Do not directly touch the backplane with your hand or any metal tool, or you could shock yourself!**
-  Make sure that the power switch is turned to standby and that the power supply cable is disconnected. Disconnect all cables from the router back panel.
- Use the Phillips #1 Screwdriver to remove the two screws on back side of the device.

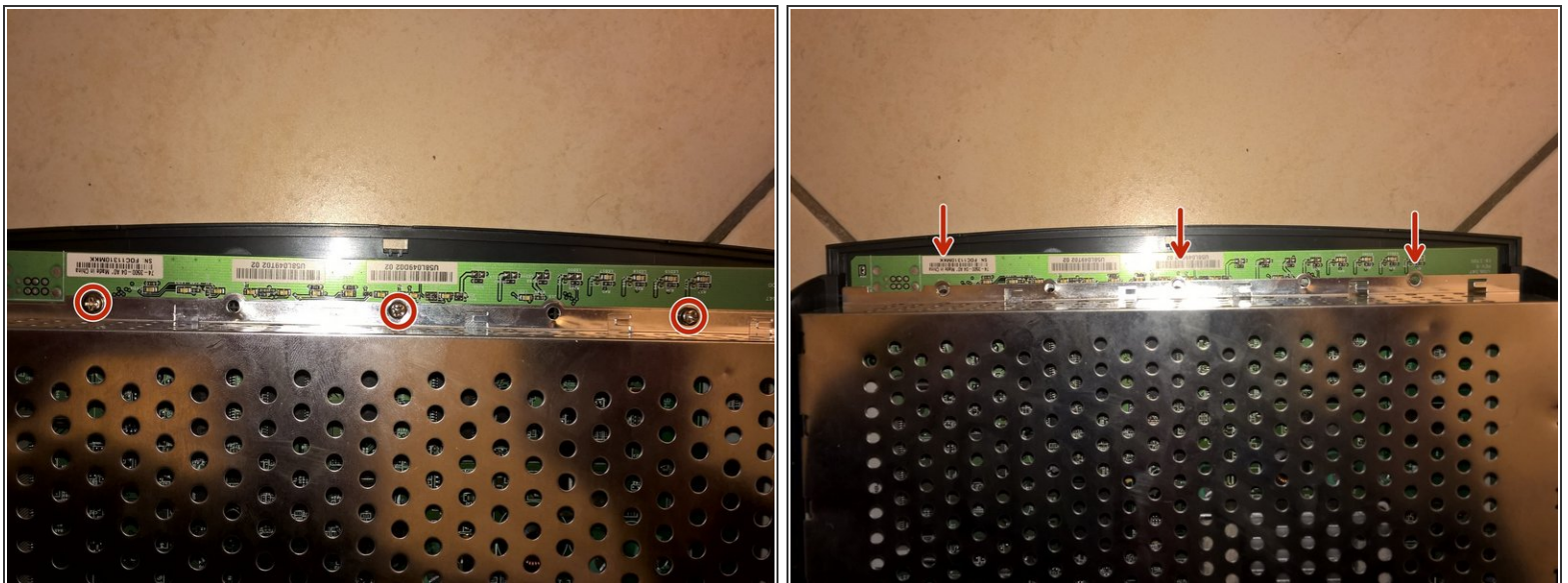
Step 2 — Remove top cover



1. Gently push the top cover of the router away from you.
2. Lift it up top cover from the bottom of the router.
3. Remove top cover from the device.

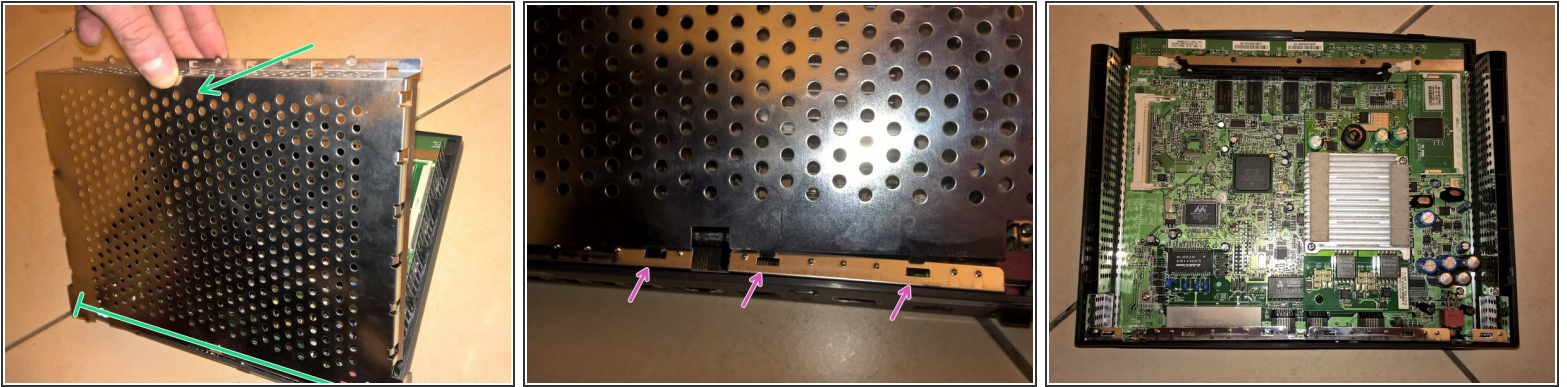
☒ Place the router bottom on an antistatic mat.


Step 3 — Remove the three screws on front side



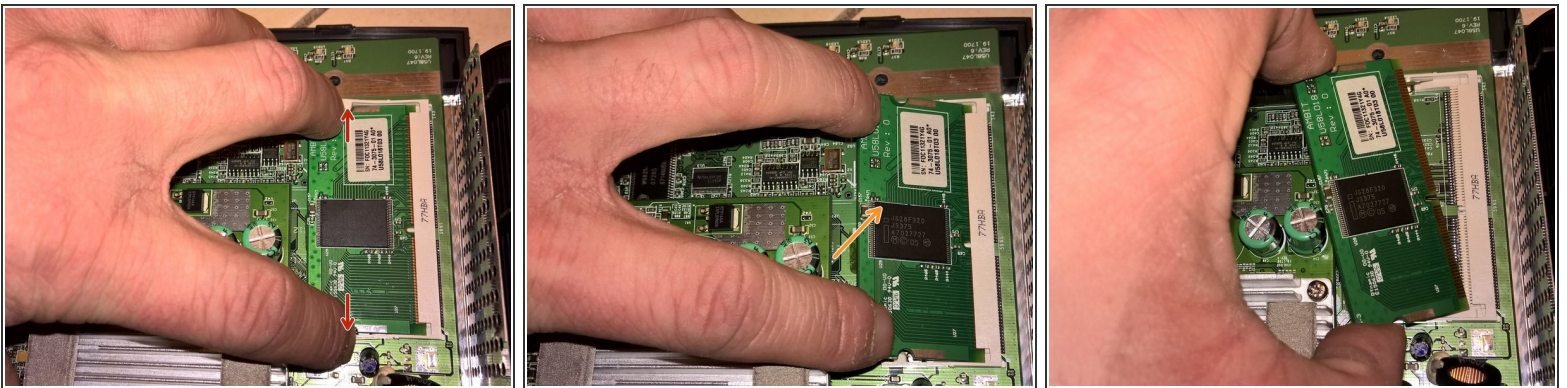
- Use the Phillips #1 Screwdriver to remove the three screws on front side of the device.

Step 4 — Remove the inner metal shield



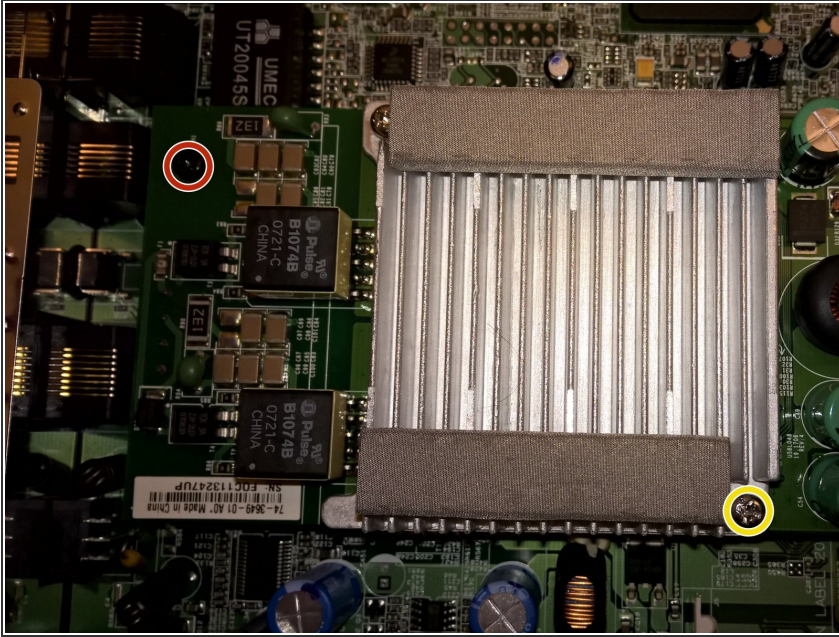
1. Gently lift up inner metal shield from the bottom of the router.
 2. Remove inner metal shield from the device (see the anchors on the picture).
-  Be careful and do not distort the plates!

Step 5 — Remove StrataFlash Memory module



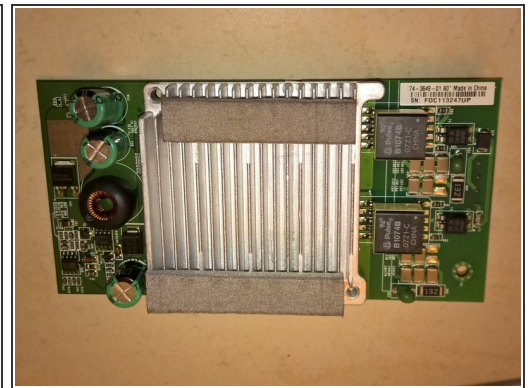
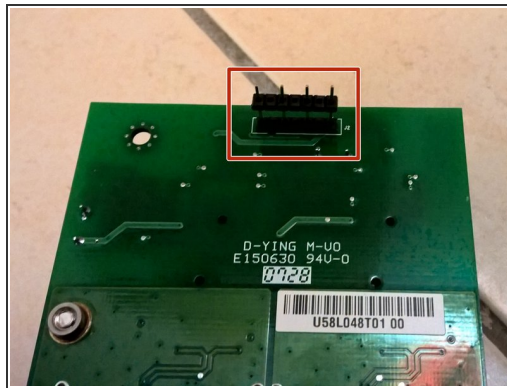
1. Place your fingers on the levers at the two sides of the slot, and push open.
2. Firmly pull the release lever away from the module until the module pops up.
3. You can then remove the module from the module slot.

Step 6 — Remove black and silver screws



- 1. Use the Phillips #1 Screwdriver to remove the black screw.
- 2. Use the Phillips #1 Screwdriver to remove the silver screw as shown on picture.
- ⓘ You should remove just only one silver screw - the second one is holding just cooling plate.

Step 7 — Remove CPU module



- Gently pull the module up to disconnect two connectors underneath.
- ⓘ Be careful and don't damage 4-pin connector (marked RED).

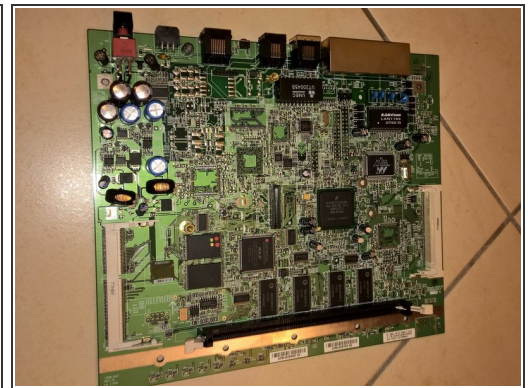
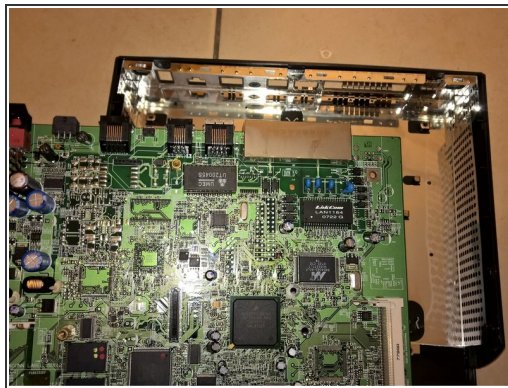
Step 8 — Remove screws holding motherboard



- Use the Phillips #1 Screwdriver to remove the two screws holding the motherboard.

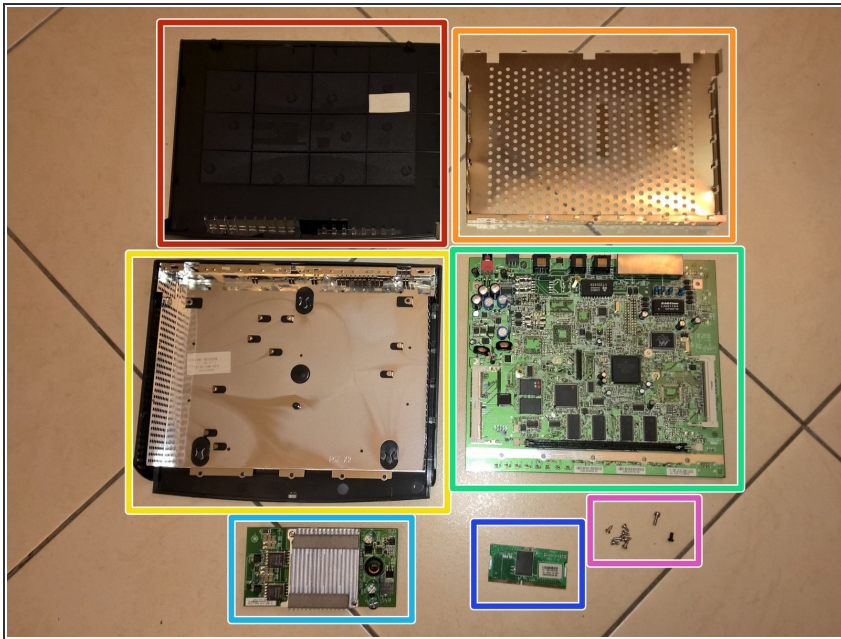
⚠ When putting screws back, don't use force - threads are made of plastic!

Step 9 — Remove motherboard from the case



- 1. Gently lift up the board to release plastic locks.
- 2. Gently pull the board away from backside panel (to release metal shielding locks around connectors).
- 3. Remove board from the case.

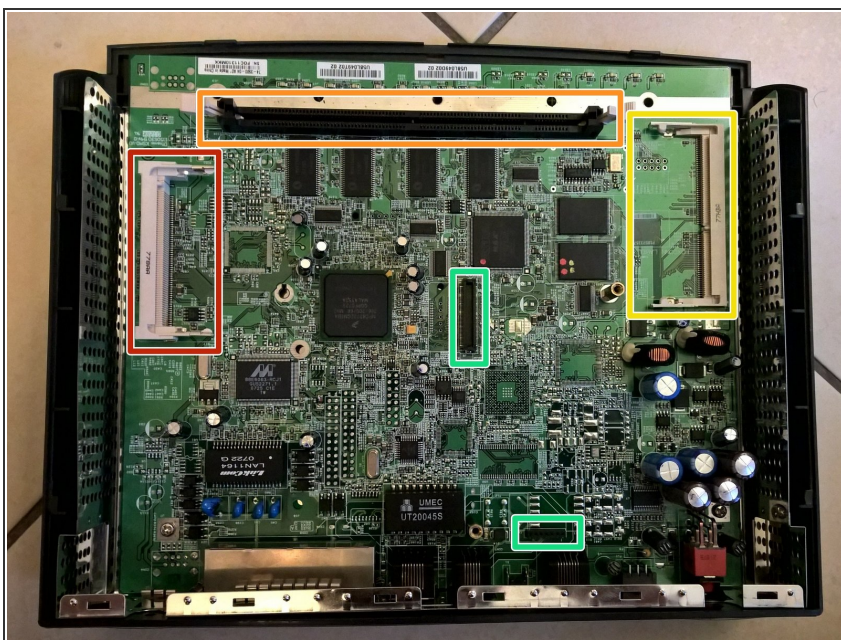
Step 10 — Teardown complete



● Parts and pieces:

- Top cover
- Inner metal shield cover
- Bottom part of case with metal shielding
- Motherboard
- SHDSL Filter Module board
- StrataFlash Memory Module
- 1 black screw, 1 silver long screw (1 is still on SHDSL Filter Module board), 7 silver screws

Step 11 — Motherboard extension slots



- mini-PCI slot for WLAN card
- DRAM socket for additional RAM Memory Module
- Slot for additional StrataFlash Memory Module (4MB module installed)
- Two connectors for SHDSL Filter Module board