



Clarke Floor Sander 07014A 2012 Fan Cover Replacement

Remove and replace the metal fan cover for a Clarke Floor Sander 07014A.

Written By: Arthur Shi



INTRODUCTION

This guide shows how to remove and replace the metal fan cover for a Clarke Floor Sander 07014A.

The blower fan will probably be stuck to the motor axle. In order to pry the fan out, you will need two prying tools—either pry bars or hammers with long claws.



TOOLS:

- [Phillips #2 Screwdriver](#) (1)
- [Snap Ring Pliers](#) (1)
- [7/16" Socket](#) (1)
- [lubricating oil](#) (1)
- [Pry Bar](#) (2)
- [3/16" Hex Key](#) (1)



PARTS:

- [Nilfisk Fan Cover Obs18 50275A](#) (1)

Step 1 — Dust Bag



- ❗ Before you begin, be sure that the sander is unplugged and powered off.
- Twist and pull the dust bag collar to disconnect it from the elbow pipe.
- Remove the dust bag.

Step 2 — Blower Housing



- Peel the rubber sleeve down from the elbow pipe to reveal the pipe socket.

Step 3



- Grasp the elbow pipe with your hands and pull up while twisting to disconnect it from the blower housing.
- Remove the elbow pipe.

Step 4



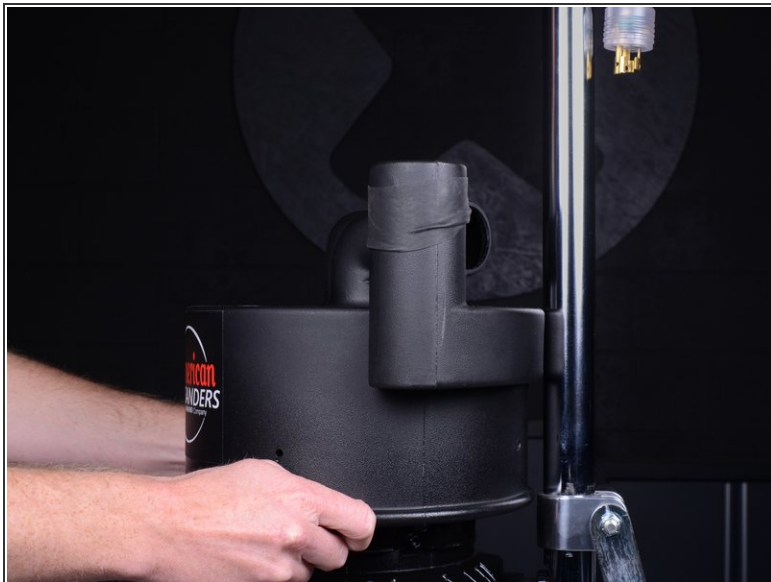
- Twist and pull to disconnect both suction hoses from the blower housing.

Step 5



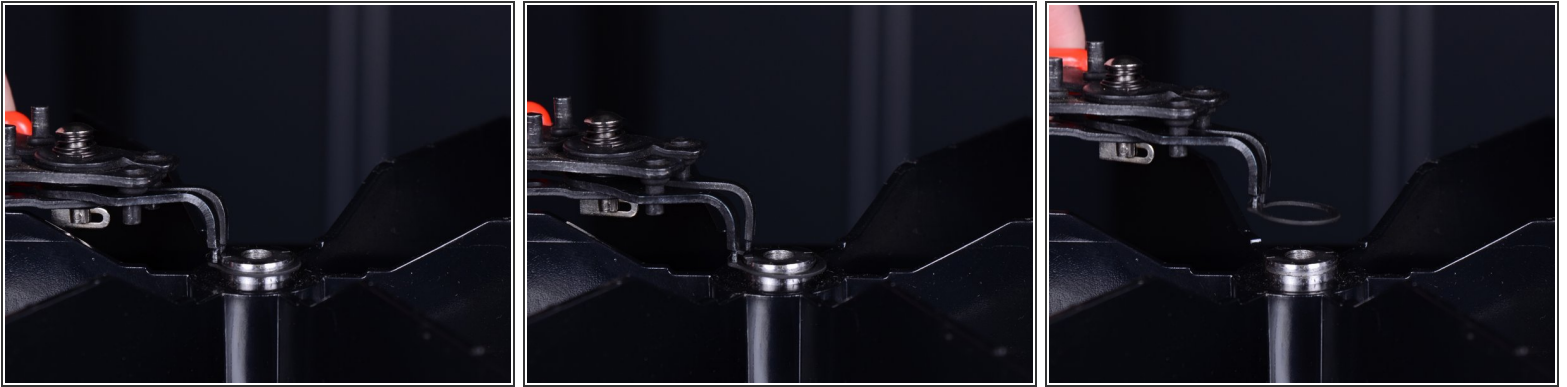
- Remove the four 22mm long Phillips screws around the side of the blower housing.

Step 6



- Lift the blower housing upwards and slide it off of the blower assembly.
- Remove the blower housing.

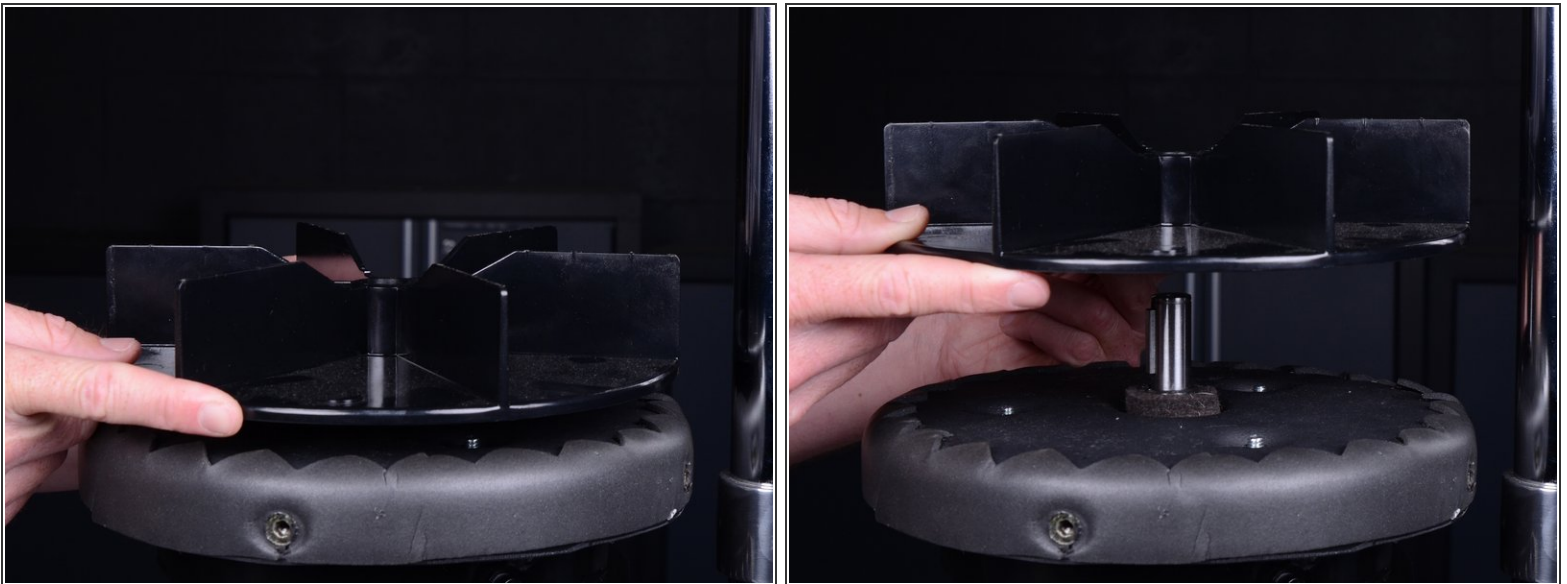
Step 7 — Blower Plate



- Use snap ring pliers to remove the retaining ring on the top of the fan axle.

✦ **Reassembly tip:** When you are reinstalling this retaining ring, make sure it sits in the axle groove.

Step 8

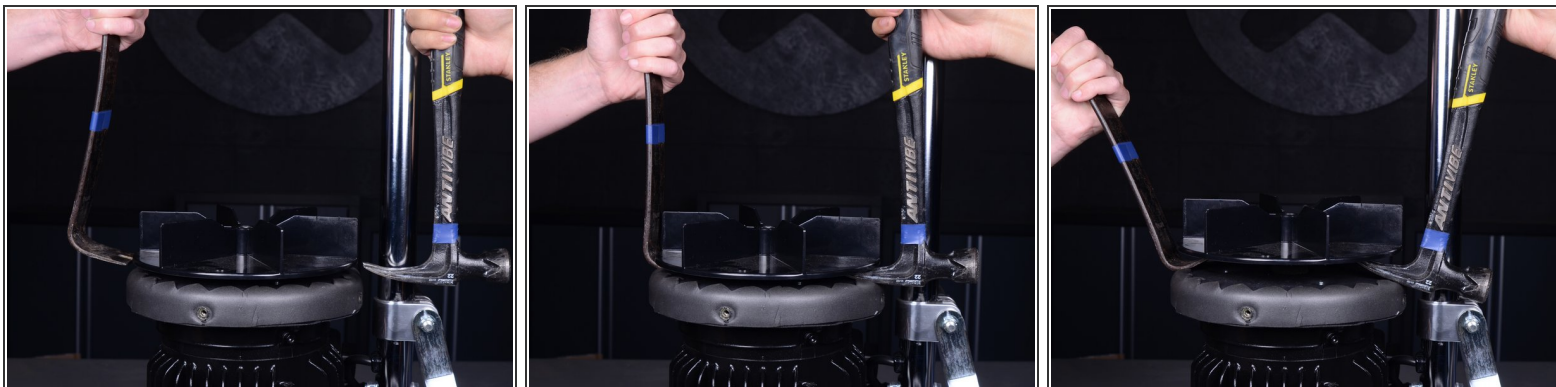


- Lift up and remove the blower fan.

ⓘ Depending on the age of the sander, this may be very difficult to do. If you are having trouble, skip to the next step, which shows how to pry the fan off.

✦ **Reassembly tip:** When you reinstall the blower fan, be sure to push it onto the axle far enough so that it sits below the axle's retaining ring groove.

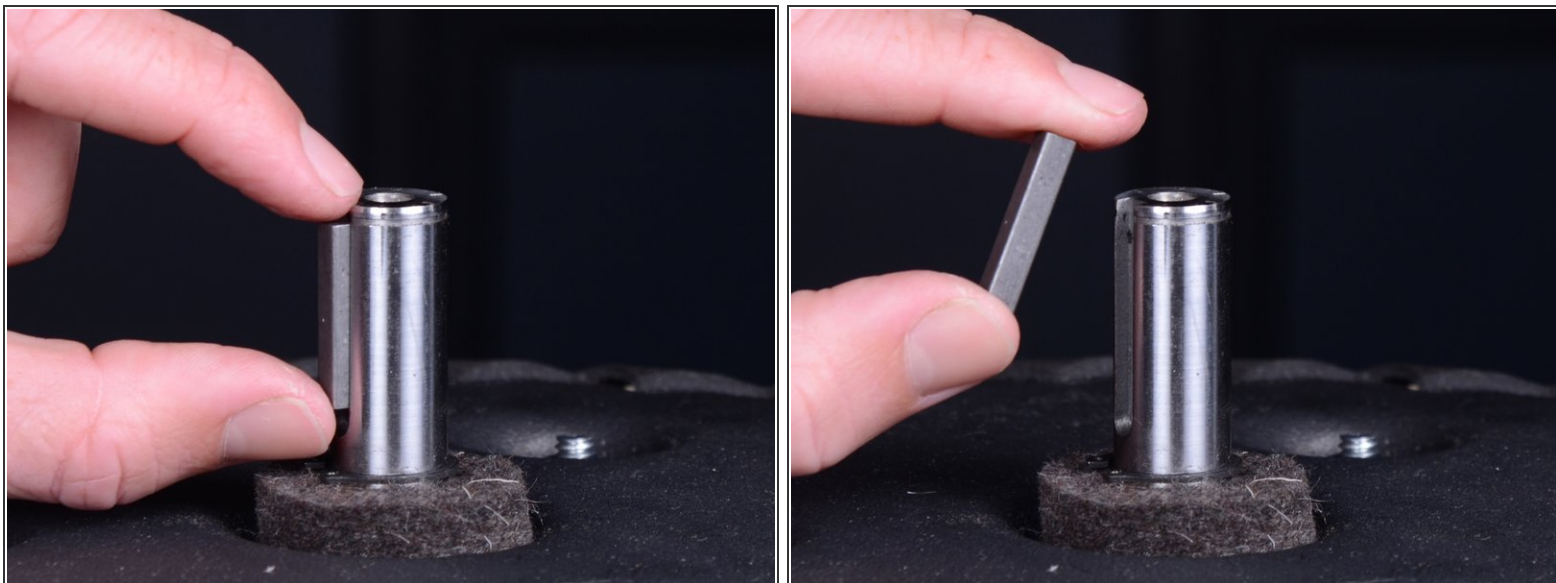
Step 9




 Follow this step if you are having trouble removing the blower fan.

- Insert a pry bar or the claw end of a hammer under opposing sides of the fan.
- Slowly pry up on both sides until the fan loosens from its axle.
- Remove the blower fan.

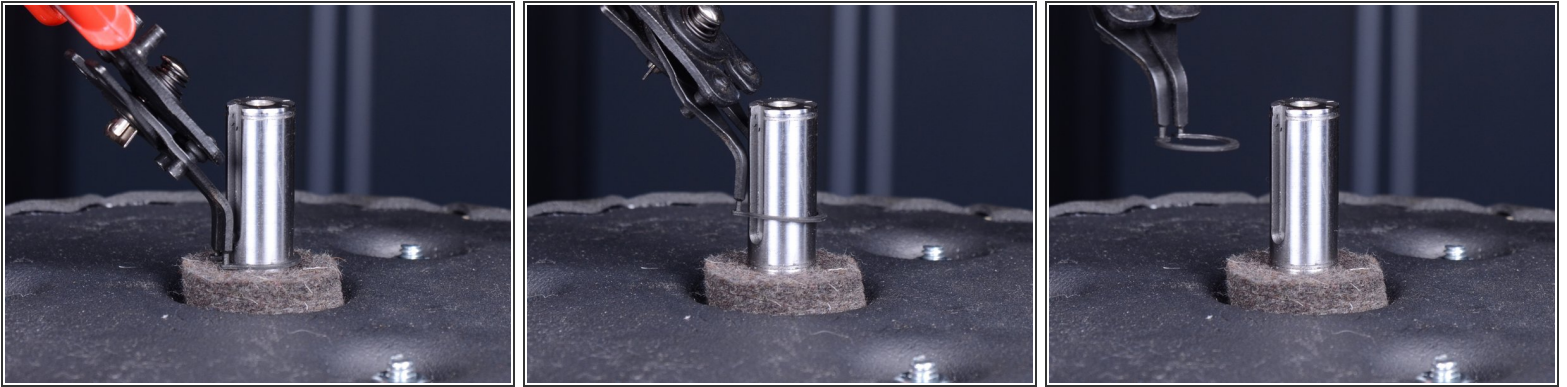
Step 10



- Remove the axle key from the fan axle.

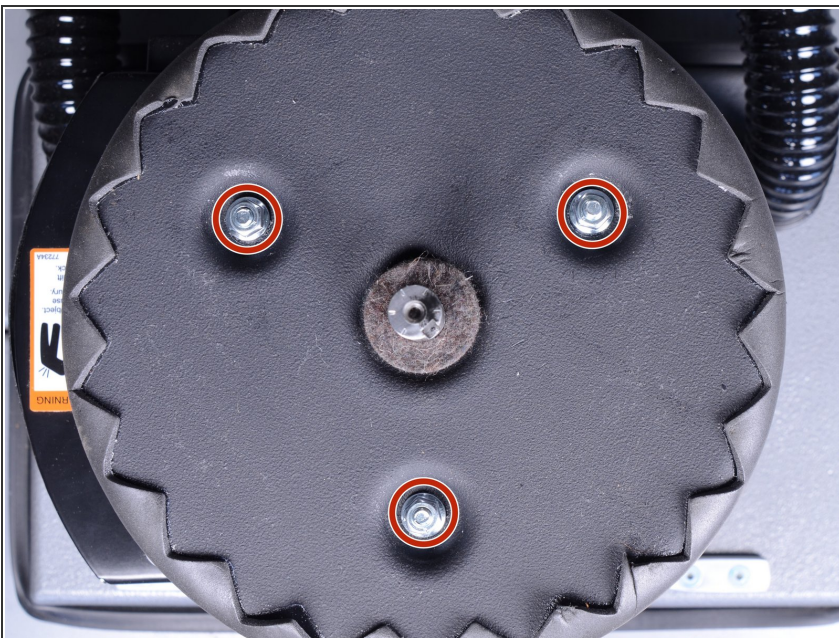
 **Re-assembly tip:** When you replace the axle key, be sure to lubricate the axle and key with machine oil.

Step 11



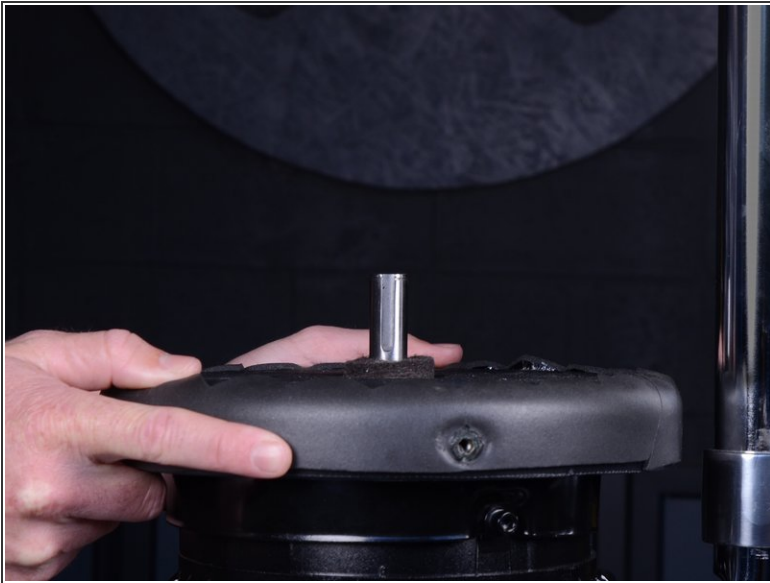
- Use snap ring pliers to pry open and remove the retaining clip at the base of the fan axle.

Step 12



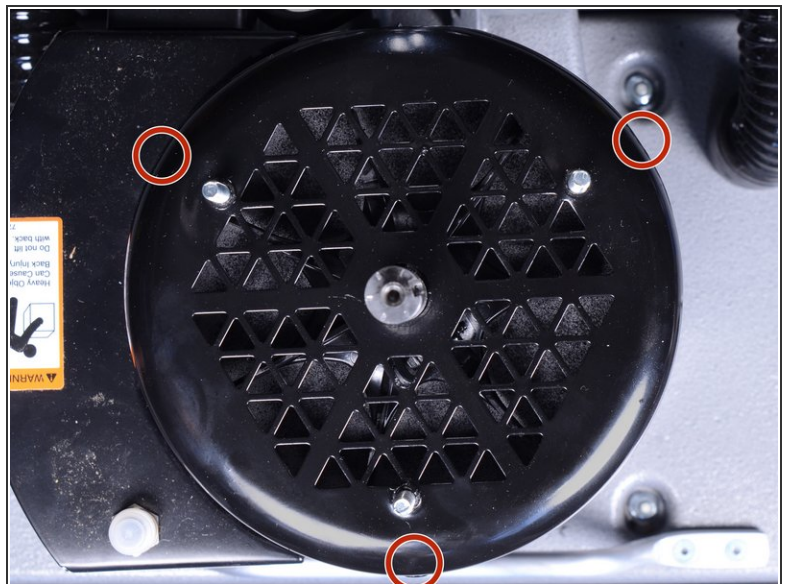
- Remove the three 7/16" (11 MM OK) nuts securing the blower plate.

Step 13



- Lift the blower plate up and remove it from the motor assembly.

Step 14 — Fan Cover



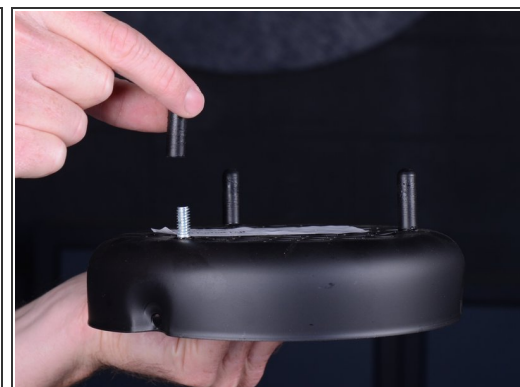
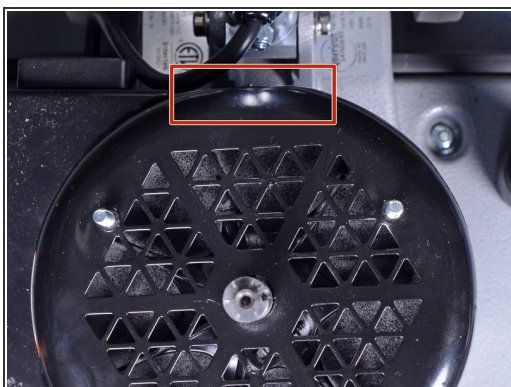
- Use a 3/16" hex key to remove the three 16 mm long bolts along the side of the fan cover.
- ⓘ These bolts have lock washers on them. Be sure to retain the washers for reinstallation.

Step 15



- Lift the fan cover and remove it from the motor assembly.

Step 16



Reassembly tips:

- When you are installing the fan cover, note that the cover is not perfectly round. There is a slightly squared edge, which should sit close to the sander's handle.
- Your replacement part will most likely have screw covers on the fan cover bolts. Be sure to remove them before installing the fan cover.

To reassemble your device, follow these instructions in reverse order.

This document was generated on 2020-04-06 05:13:26 AM (MST).

