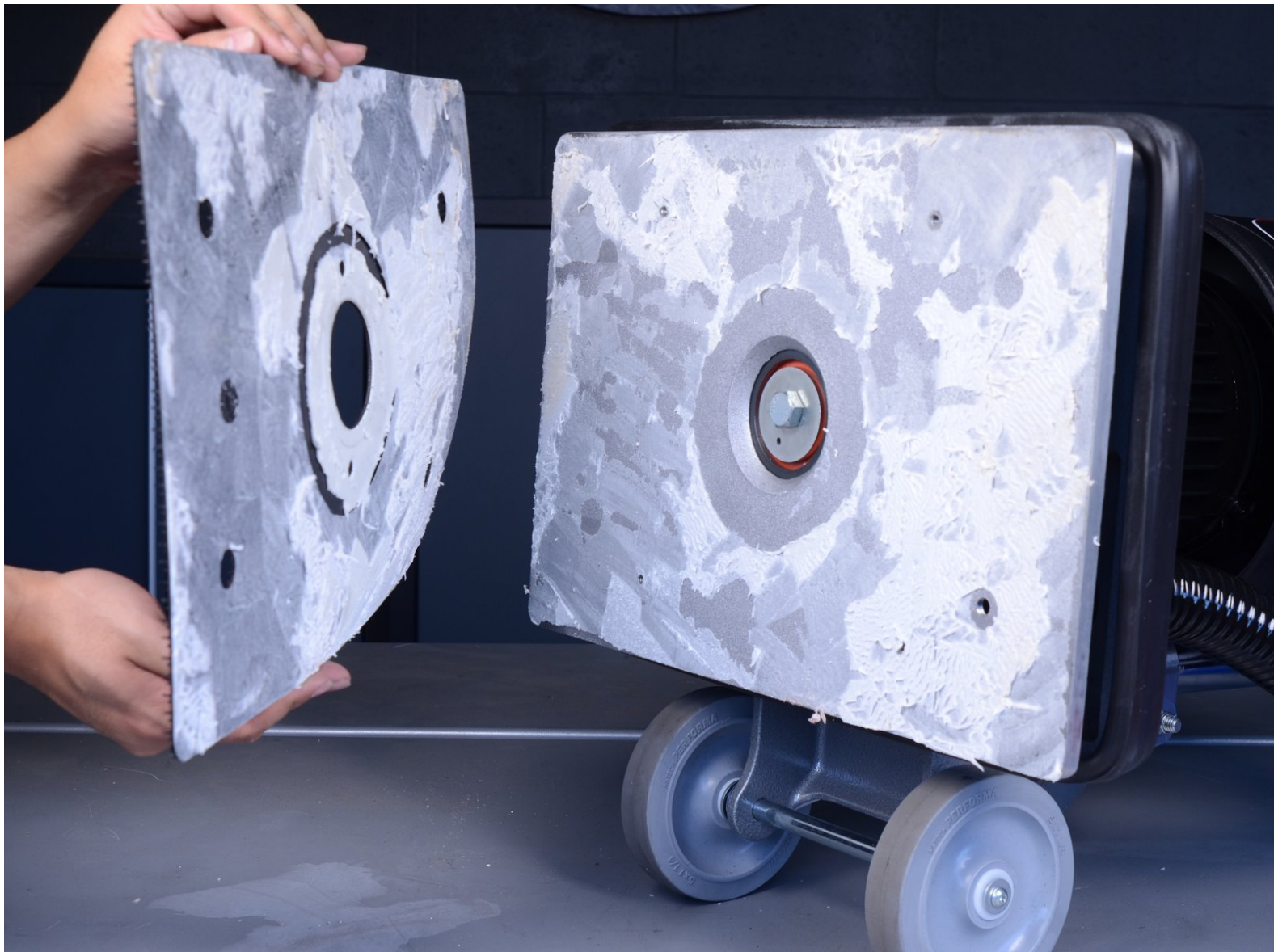




# Clarke Floor Sander 07014A 2012 Grip Face Pad Replacement

Remove and replace the grip face pad for the Clarke Floor Sander 07014A.

Written By: Arthur Shi



## INTRODUCTION

This guide shows how to remove and replace the glued-on grip face pad for the Clarke Floor Sander 07014A.

The process involves prying the old grip face off of the base plate with a putty knife, sanding off the adhesive residue, and adhering a new grip face on.



### TOOLS:

- [Portable Sander](#) (1)
- [Putty knife](#) (1)
- [Safety Glasses](#) (1)
- [Dust mask](#) (1)
- [Isopropyl Alcohol](#) (1)



### PARTS:

- [Clarke Grip Face Pad AS009400](#) (1)

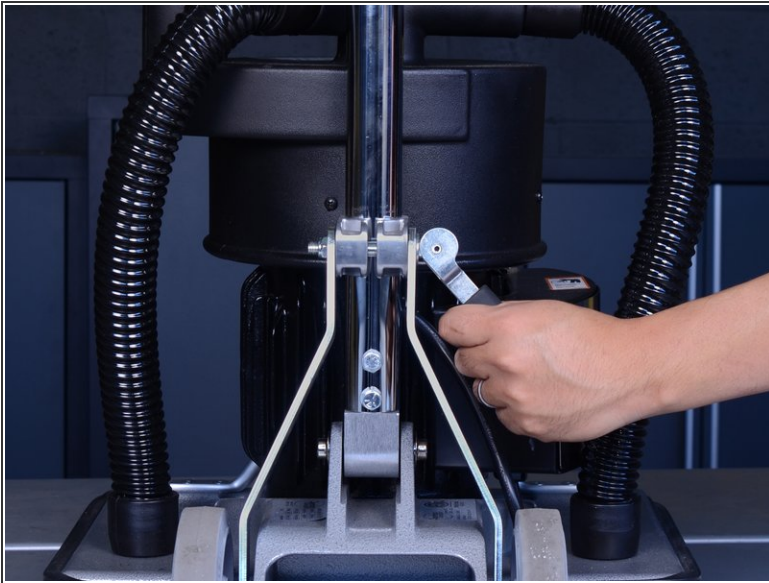
## Step 1 — Dust Bag



- ⓘ Before you begin, be sure that the sander is unplugged and powered off.
- Twist and pull the dust bag collar to disconnect it from the elbow pipe.
- Remove the dust bag.

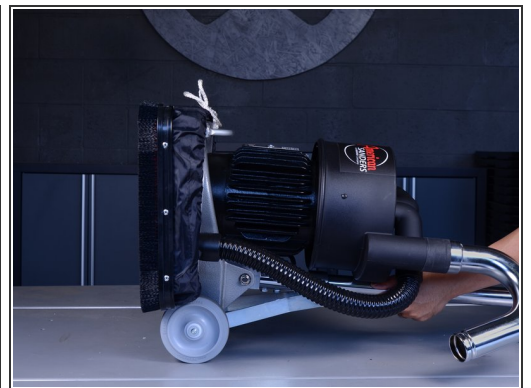


## Step 2 — Grip Face Pad



- Lock the handle in place by pulling the lock lever upwards.
- Test the lock by wobbling the handle and making sure that it is not loose.

## Step 3



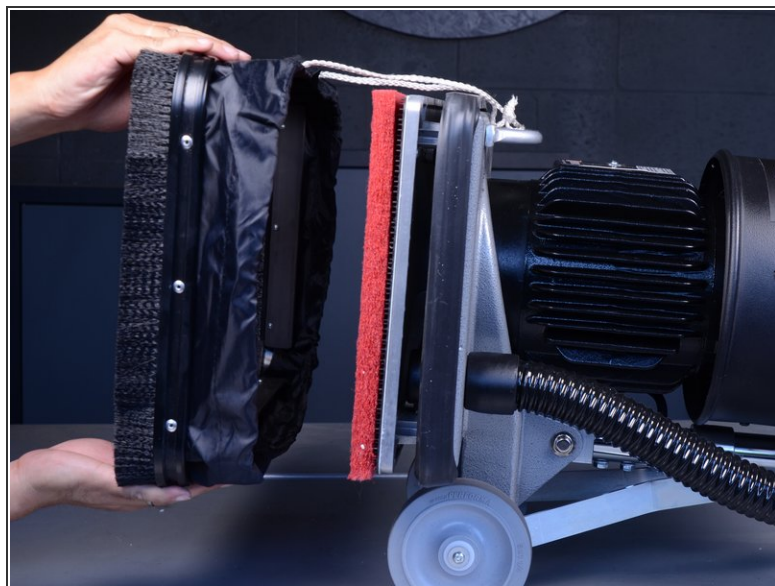
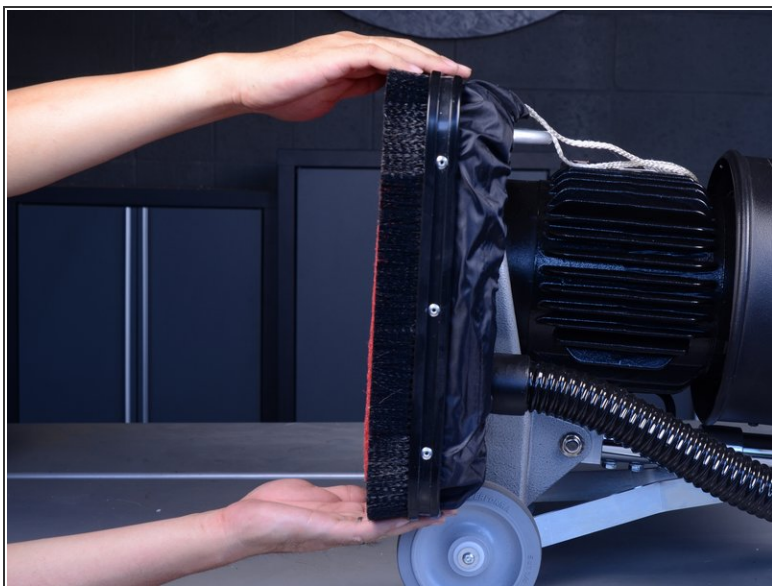
- i** This step shows how to lay the sander on its back.
- Brace the wheel axle with your foot and grasp the handle with both hands.
  - Slowly tilt the handle downwards until it rests on your work surface.

## Step 4



- Untie and loosen the drawstring securing the dust skirt.

## Step 5



- Slide the dust skirt off of the bottom plate and remove it.



## Step 6



- Peel the red pad away from the grip face and remove it.

## Step 7



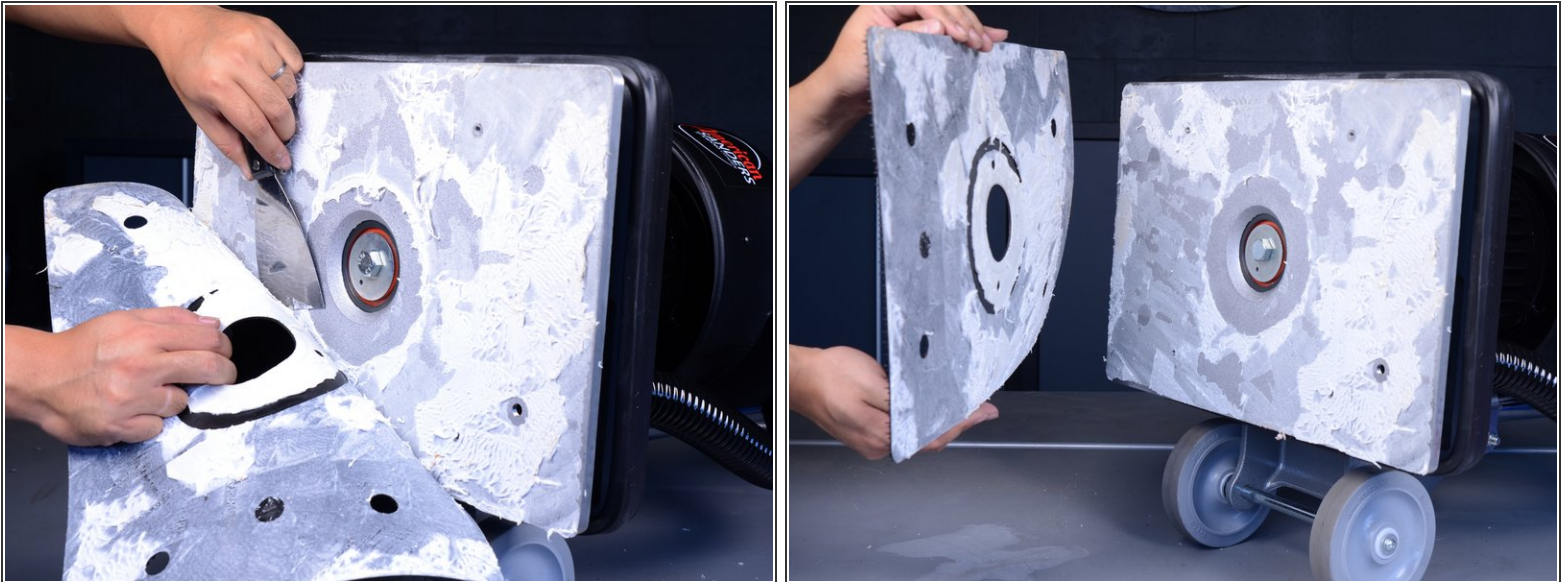
- ⓘ The grip face pad is attached to the base plate by a layer of spongy adhesive.
- Press the edge of a putty knife or flat scraper into the adhesive layer sandwiched between the grip face pad and base plate.
- Push and wiggle the putty knife to slice into the adhesive.

## Step 8



- Slide the putty knife along the edge to slice through the adhesive.
- Apply force to the handle and wiggle the putty knife to help with the slicing.
- Continue slicing into the adhesive.

## Step 9



- Once you have a sizable area detached, pull on the grip face pad while you slice to help with the process.
- Continue slicing until you have detached the grip face pad.
- Remove the grip face pad.



## Step 10



- ❗ In order for the new grip face pad to adhere properly, you must remove all uneven adhesive residue from the base plate.
  - Use the putty knife to scrape off any large chunks of residue.
  - You may also be able to peel large residue chunks with your fingers.
  - Remove any remaining residue with a coarse (50~100) grit sander. The final surface should feel smooth.
- ❗ For your safety, wear a dust mask and safety glasses while sanding.
- Clean the surface with some isopropyl alcohol.

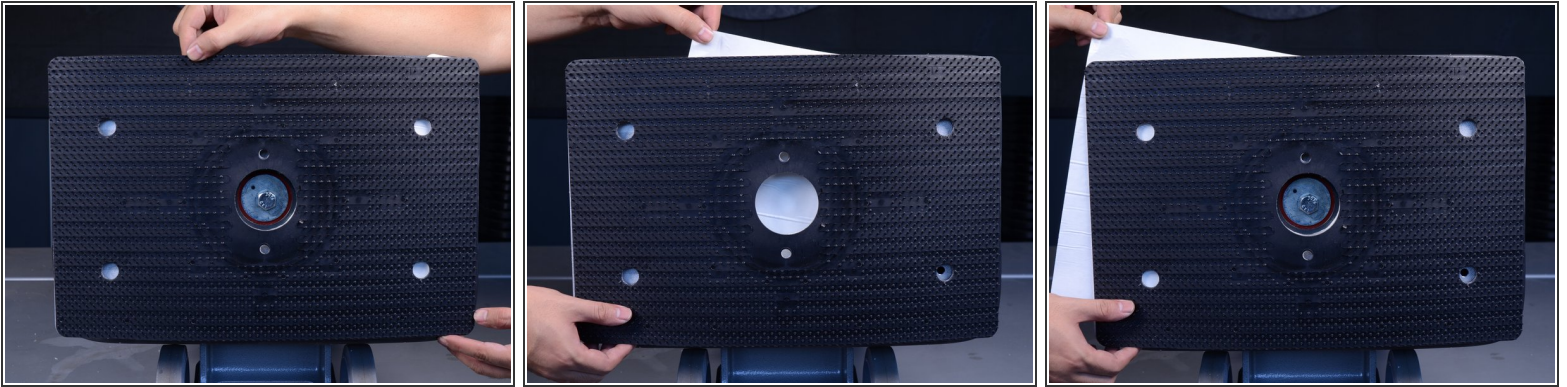


## Step 11



- Peel the replacement grip face pad's adhesive liner one inch from a short edge.

## Step 12



- i** The adhesive is extremely tacky! You only have one chance to align the grip face pad properly to the base.
- Carefully line up the grip face pad to the base, ensuring that all the edges line up.
  - Press the right edge of the pad (with exposed adhesive) onto the base.
  - Pull the adhesive liner from behind the pad and remove it to expose the remaining adhesive.
  - Look at the liner you just pulled out and make sure it hasn't ripped and left some of the liner on the back of the pad.

## Step 13



- Press the grip face pad onto the base plate.
  - ❗ You don't have to press very hard. Just ensure that the pad is properly in position.
- Press the red pad back onto the grip face pad.
- Carefully swing the sander back upright so that its weight presses against the base plate.
- Allow the sander to sit in this position for an hour to help the grip face pad's adhesive to bond.