



Clarke Floor Sander 07163A 2012 Interlock Assembly Replacement

Remove or replace the interlock assembly in a Clarke Floor Sander 07163A 2012.

Written By: Adam O'Camb



INTRODUCTION

Use this guide to remove or replace the interlock assembly in a Clarke Floor Sander 07163A 2012.



TOOLS:

- [3/16" Hex Key](#) (1)



PARTS:

- [Clarke Interlock Asm 10687A](#) (1)

Step 1 — Separate the handle



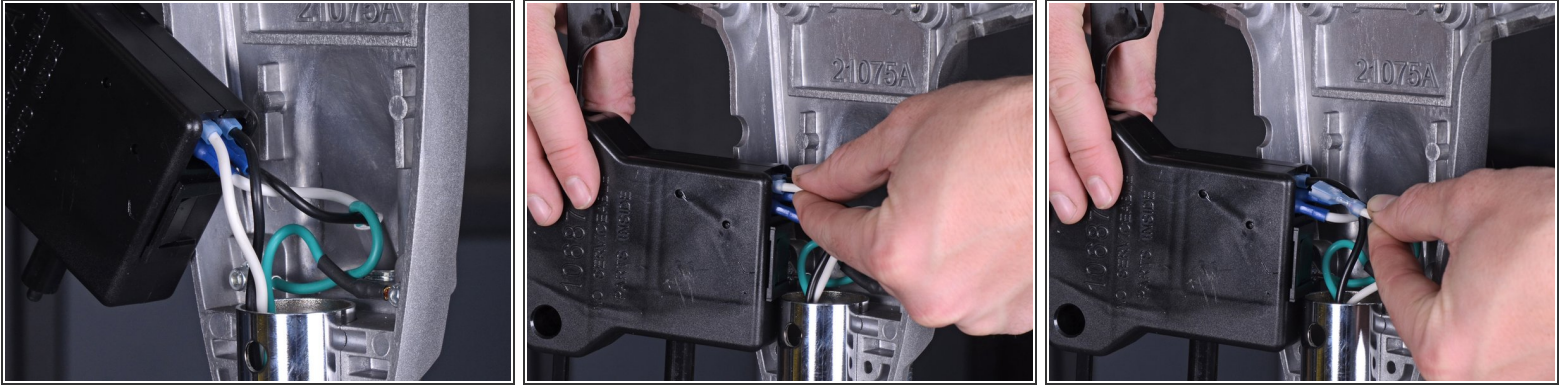
- ⚠ Before you begin, make sure the sander is turned off and unplugged.
- Use a 3/16" hex key or driver bit to remove the six 23.4 mm-long screws holding the two halves of the handle enclosure together.

Step 2



- ⓘ The rear half of the enclosure is bolted to the handle support, so the front half will be removed first.
- Pull the front half of the enclosure straight away from the rear half to separate the enclosure.
- ⓘ If the interlock assembly comes out with the front half of the enclosure, detach it and place it back into the rear half.
- Remove the front half of the handle enclosure.

Step 3 — Unplug the interlock assembly



- Pull the wires connected to the interlock assembly straight out of their connectors.
- ① Keep track of where each wire connects on the interlock assembly.

Step 4 — Remove the interlock assembly



- After all wires are disconnected from the interlock assembly, remove the interlock assembly from the handle.

To reassemble your device, follow these instructions in reverse order.