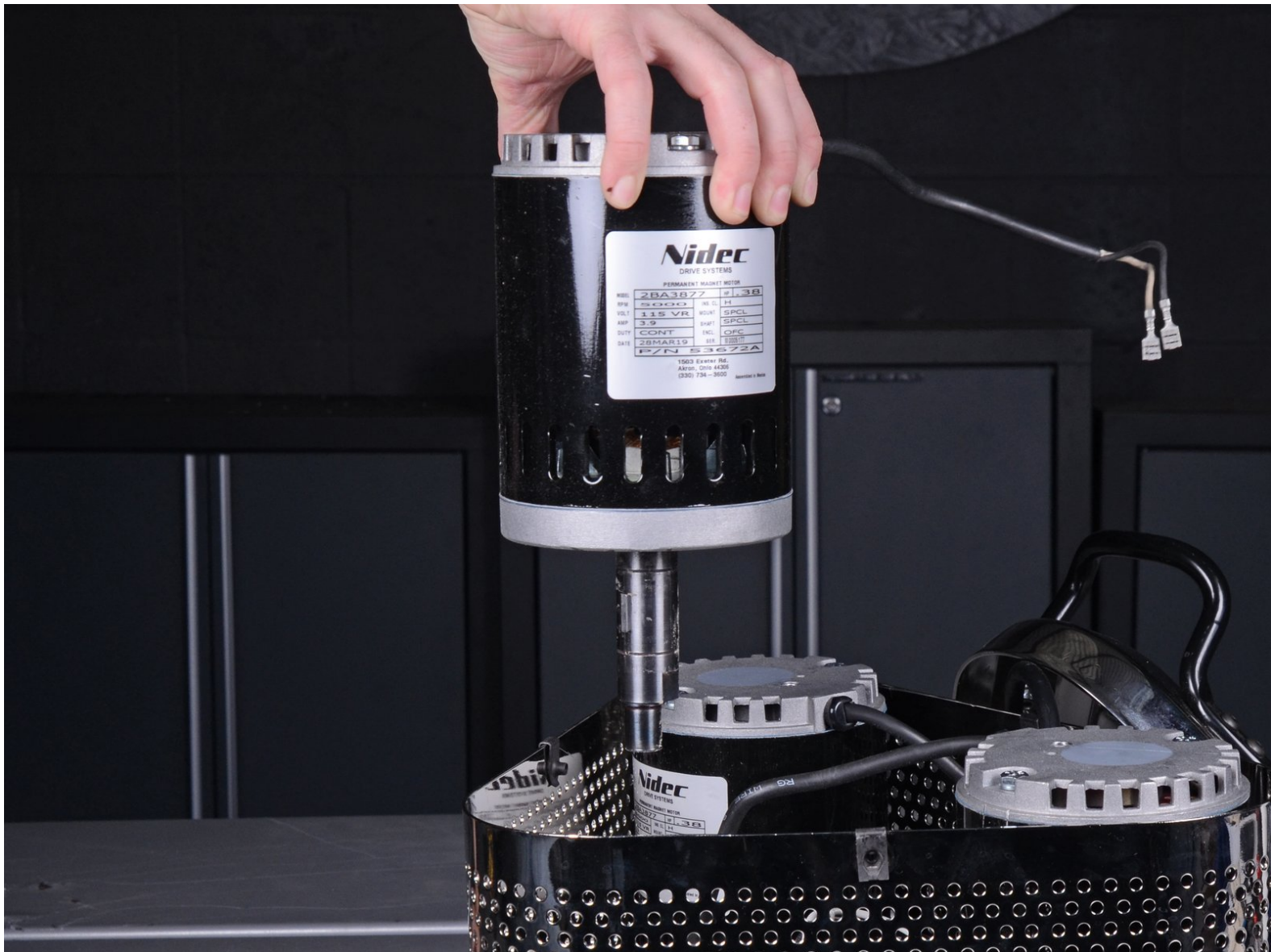




# Clarke Floor Sander 07163A 2012 Motor Replacement

Remove or replace a motor in a Clarke Floor Sander 07163A 2012.

Written By: Adam O'Camb



# INTRODUCTION

Use this guide to replace the motor in a Clarke Floor Sander 07163A 2012.

This guide shows the removal of one motor, but the process is the same for any of the other motors.



## TOOLS:

- [3mm Hex Key](#) (1)
- [Flathead Screwdriver](#) (1)
- [11 mm Socket](#) (1)
- [Socket Wrench](#) (1)
- [22 mm Thin Wrench](#) (1)
- [Pry Bar](#) (1)
- [4 mm Hex Key](#) (1)
- [Snap Ring Pliers](#) (1)
- [Phillips #2 Screwdriver](#) (1)
- [Allen Wrench 7/32"](#) (1)



## PARTS:

- [Clarke Motor Ez Sand 53672A](#) (1)

## Step 1 — Remove the sandpaper disc



- ⚠ Before you begin, be sure that the sander is unplugged and powered off.
- Carefully tilt the sander back and lay it down on its side, exposing the three sanding pads on the bottom.

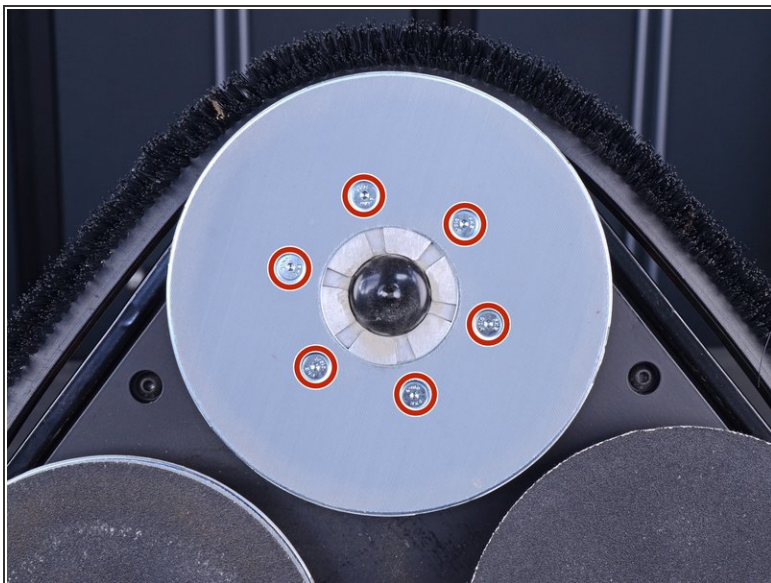
## Step 2



- Peel the hook-and-loop sandpaper disc off of the driver assembly.

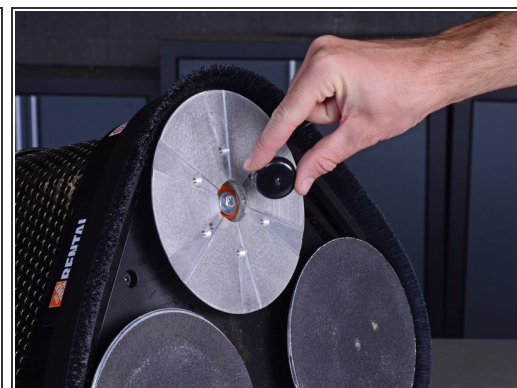
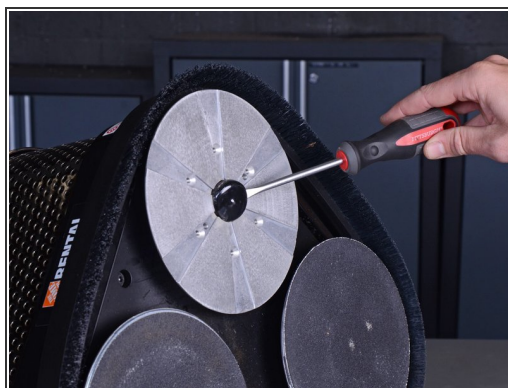


### Step 3 — Remove the driver pad



- Use a 3 mm hex key or driver bit to remove the six 11.9 mm-long screws securing the driver pad.
- Remove the driver pad from the sander disc.

### Step 4 — Remove the sanding disc



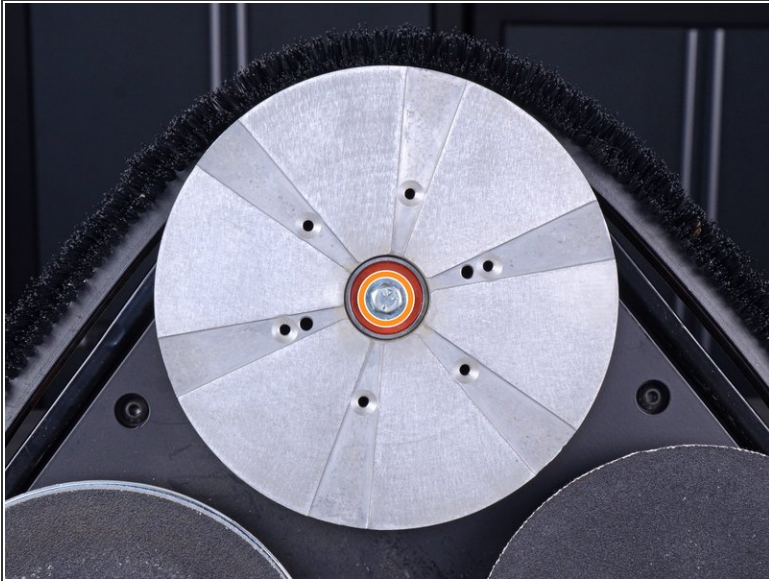
- Use a flathead screwdriver to pry off and remove the rubber plug in the center of the sanding disc.

## Step 5



- Slide a thin 22 mm wrench underneath the sanding disc and clasp it onto the flat part of the motor driveshaft to keep the driveshaft from turning.

## Step 6



- Use an 11 mm socket and socket wrench to remove the 16.5 mm-long bolt securing the sanding disc to the motor driveshaft.
- Apply counter torque to the driveshaft wrench as you loosen the bolt to keep the sanding disc from spinning.



## Step 7



- Take two pry bars and insert them underneath the sanding disc as close to the driveshaft as possible.
- Apply pressure to the pry bars in opposite directions to carefully pry the sanding disc off of the driveshaft.
- Remove the sanding disc from the floor sander.

## Step 8 — Remove the bottom weight and cover



- Repeat the previous seven steps to remove the other two sanding discs before continuing.
- With all three sanding discs removed, use a 4 mm hex key to remove four 25.4 mm-long screws securing the bottom cover and bottom weight.

## Step 9



- Lift the bottom weight away from the sander.

## Step 10



- Pull the top edge of the bottom cover away from the sander until you have enough space to slide the cover out.
- Slide the cover across the bottom of the sander, away from the wheels, and remove it.



## Step 11 — Remove the dust fan



- Remove the washer from the motor shaft.

## Step 12



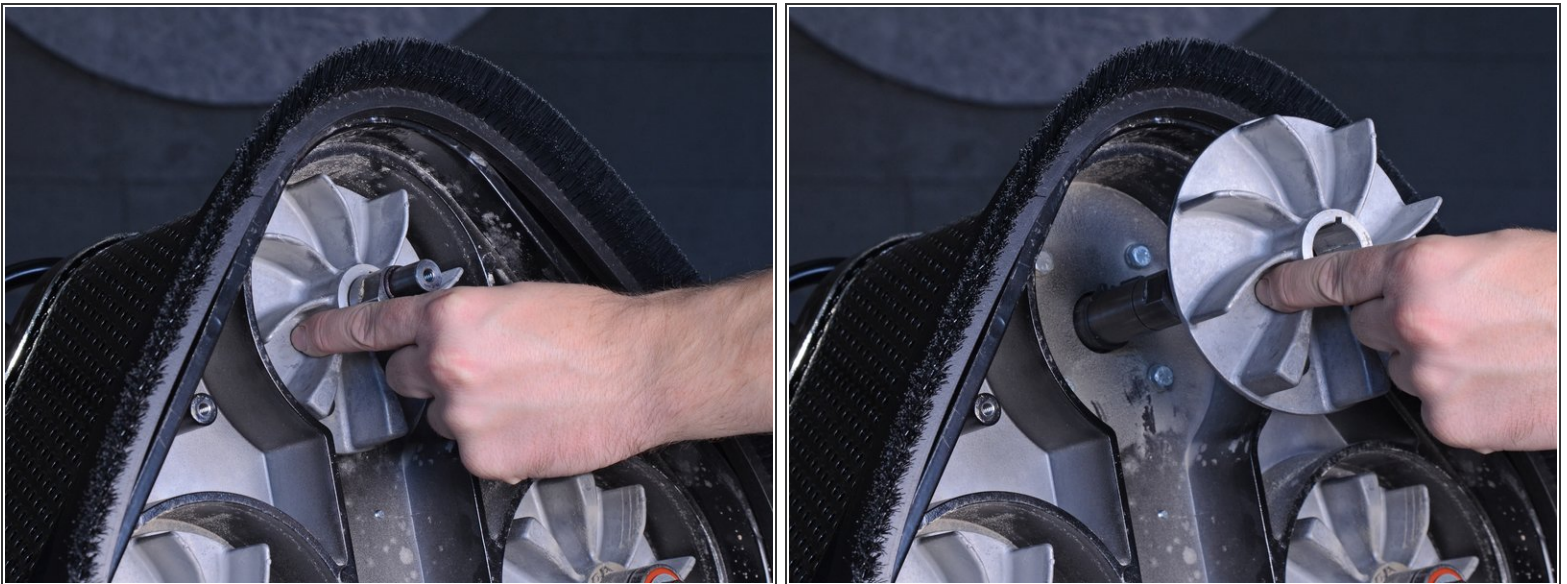
- Pull the drive pad bearing straight off of the motor shaft.
- You may not be able to remove the bearing with your hands. If this is the case, use a bearing puller to remove the bearing.

## Step 13



- Using snap ring pliers, pry the snap ring open and slide it off of the motor shaft.
- Remove the snap ring.

## Step 14



- Slide the dust fan straight off of the motor shaft.



## Step 15 — Prepare the motor for removal



- Using snap ring pliers, pry the snap ring open and slide it off of the motor shaft.
- Remove the snap ring.

## Step 16 — Remove the motor screws



- Use an 11 mm socket to remove the four 22.8 mm-long screws securing the motor.

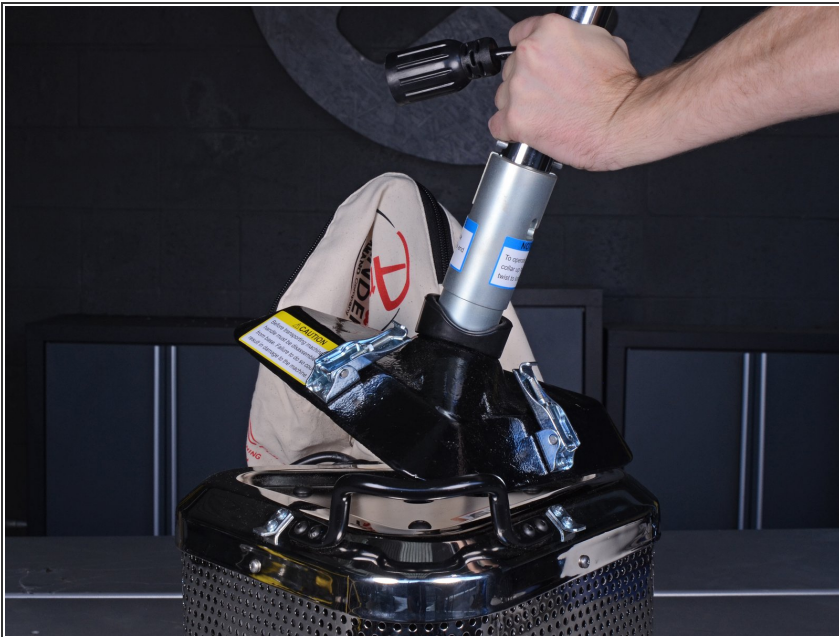


## Step 17 — Unlatch the handle assembly



- Lift the top of the latch securing the handle assembly to the sander and push it back against the sander.
- Make sure the hook on the latch is clear of the small metal tab on the sander.
- Repeat this step for all three latches securing the handle assembly.

## Step 18 — Remove the handle assembly



- Remove the handle assembly from the sander.

## Step 19 — Remove the dust bag



- Lift the dust bag straight up to remove it from the sander.

## Step 20 — Remove the motor



- Use a Phillips #2 driver to remove three 22.1 mm-long screws securing the motor cover to the sander. There is one screw on each side of the sander.



## Step 21



- Use a 7/32" hex key to remove three 23.7 mm-long hex screws securing the motors to the motor cover.

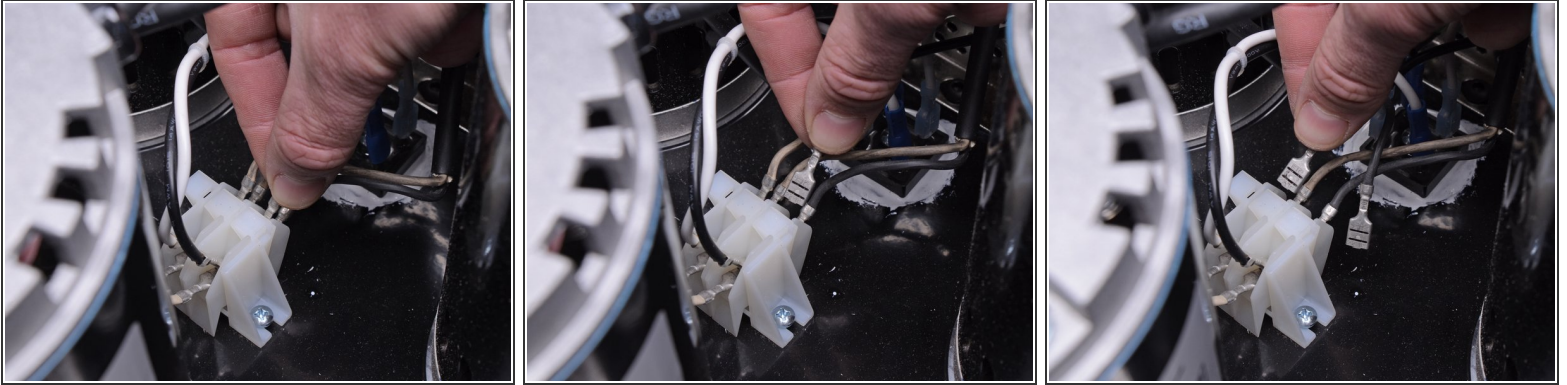
## Step 22



- Lift the motor cover straight up and remove it.

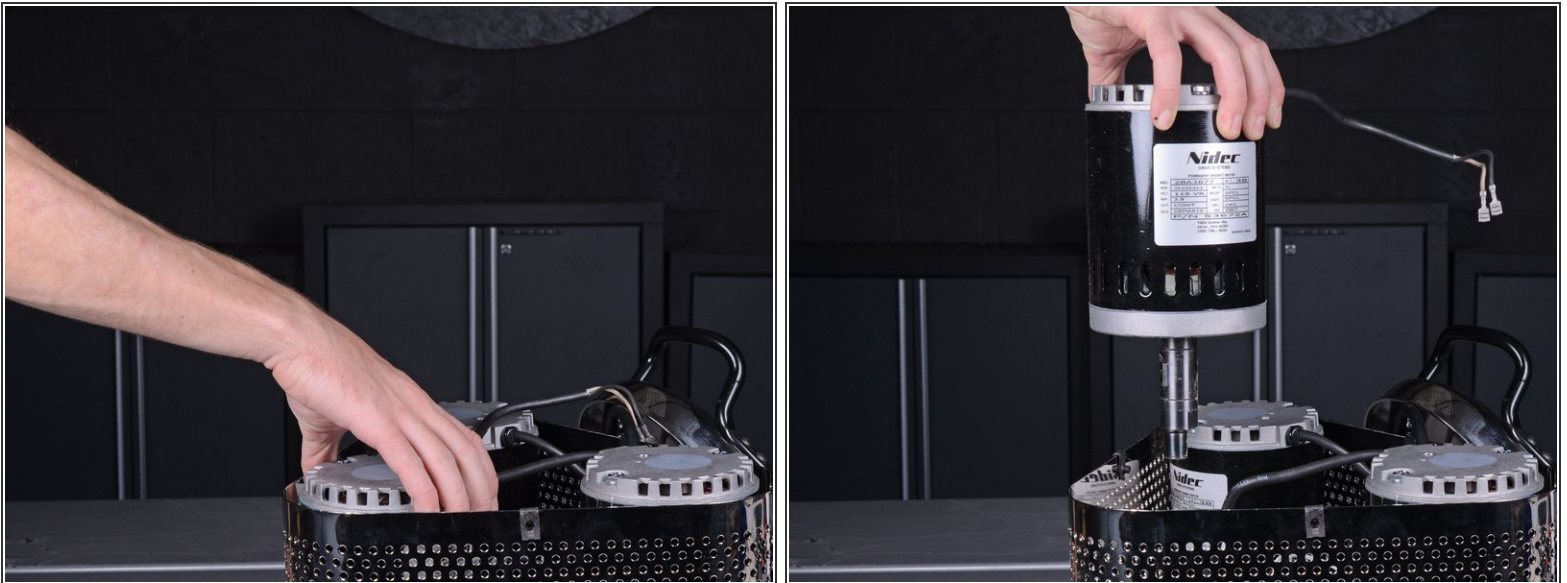


## Step 23



- Find the two wires that connect the motor you're replacing to the motor power hub that sits in between all the motors.
- Pull the two wires straight out of their sockets to disconnect them.

## Step 24



- Lift the motor straight up and remove it from the sander.
- ☑ Repeat the last 14 steps if you wish to remove one or both of the remaining motors.

To reassemble your device, follow these instructions in reverse order.