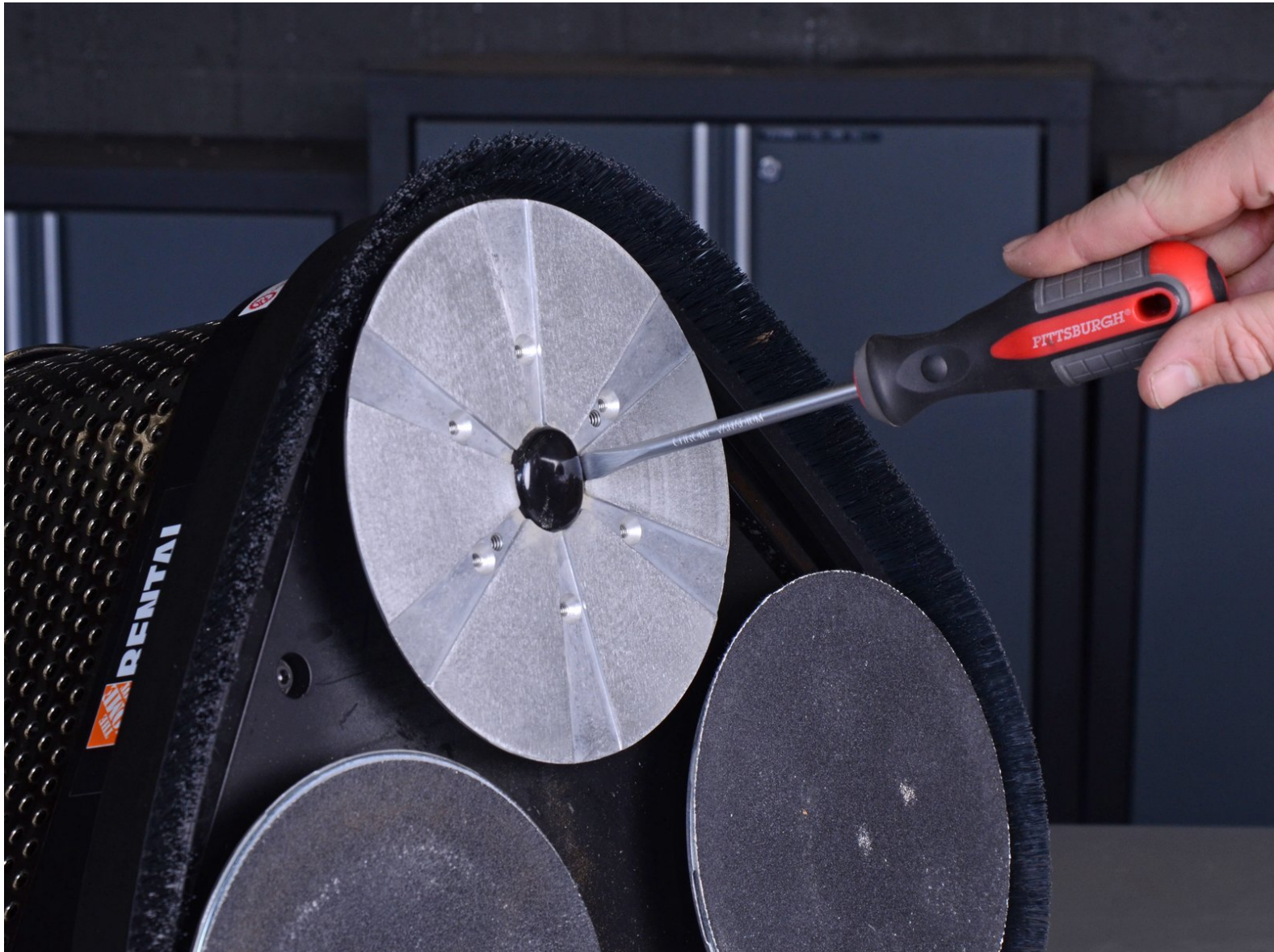




Clarke Floor Sander 07163A 2012 Sanding Disc Assembly Replacement

Prerequisite-only guide to remove the sanding disc assembly, including the bearings.

Written By: Adam O'Camb



INTRODUCTION

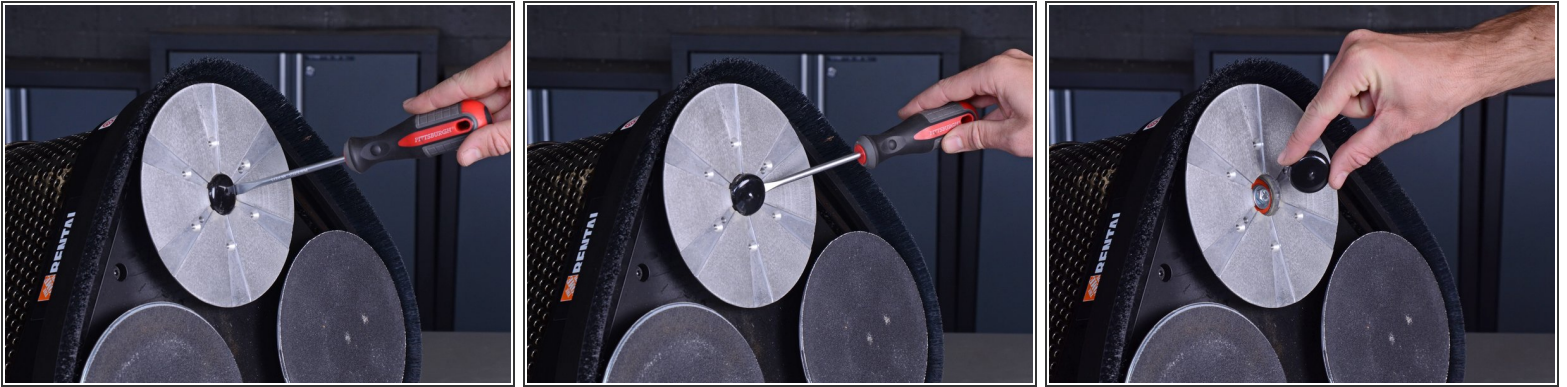
Prerequisite-only guide to remove the sanding disc assembly, including the bearings.



TOOLS:

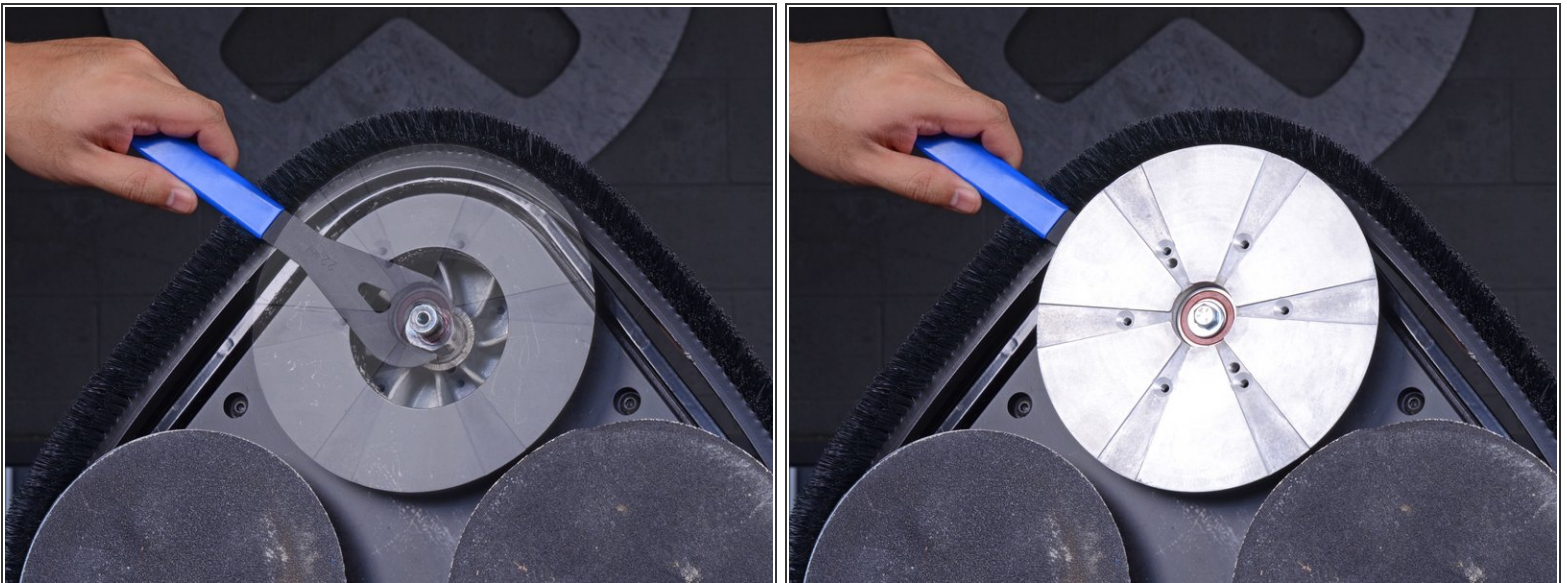
- [Flathead Screwdriver](#) (1)
 - [11 mm Socket](#) (1)
 - [Socket Wrench](#) (1)
 - [22 mm Thin Wrench](#) (1)
 - [Pry Bar](#) (1)
-

Step 1 — Remove the sanding disc



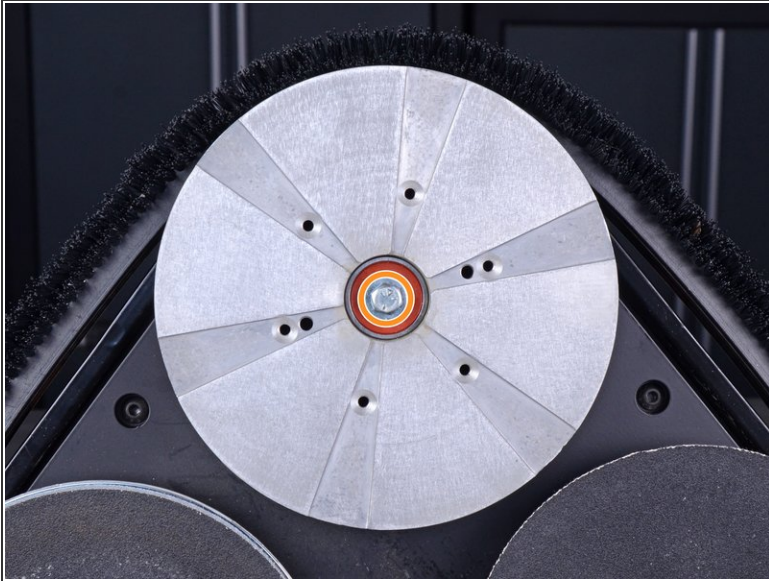
- Use a flathead screwdriver to pry off and remove the rubber plug in the center of the sanding disc.

Step 2



- Slide a thin 22 mm wrench underneath the sanding disc and clasp it onto the flat part of the motor driveshaft to keep the driveshaft from turning.

Step 3



- Use an 11 mm socket and socket wrench to remove the 16.5 mm-long bolt securing the sanding disc to the motor driveshaft.
- Apply counter torque to the driveshaft wrench as you loosen the bolt to keep the sanding disc from spinning.

Step 4



- Take two pry bars and insert them underneath the sanding disc as close to the driveshaft as possible.
- Apply pressure to the pry bars in opposite directions to carefully pry the sanding disc off of the driveshaft.
- Remove the sanding disc from the floor sander.

To reassemble your device, follow these instructions in reverse order.