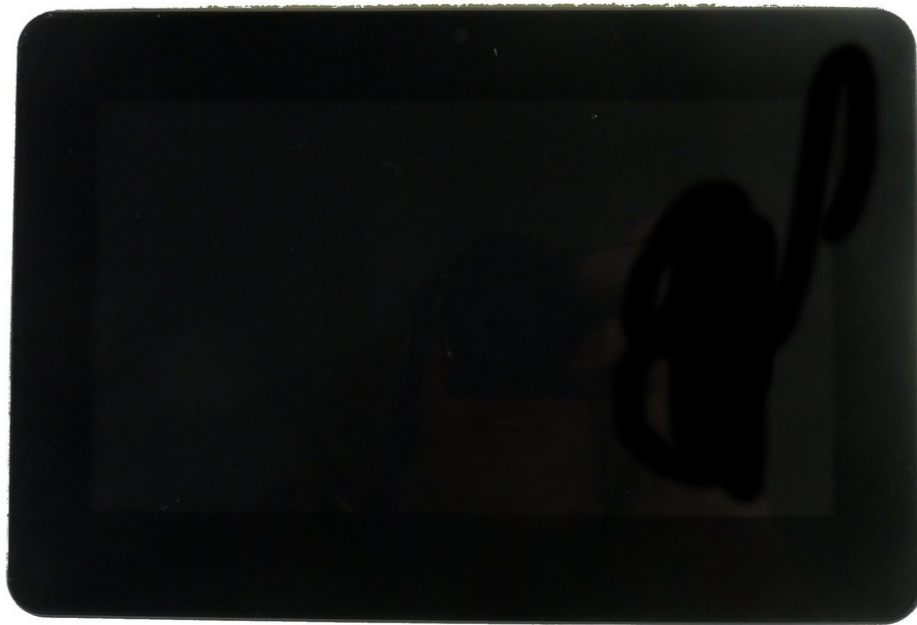




ClickN Kids Tablet Touch Screen Display Replacement

Guide to replace a part of the touch screen display

Written By: Kevin Finney





PARTS:

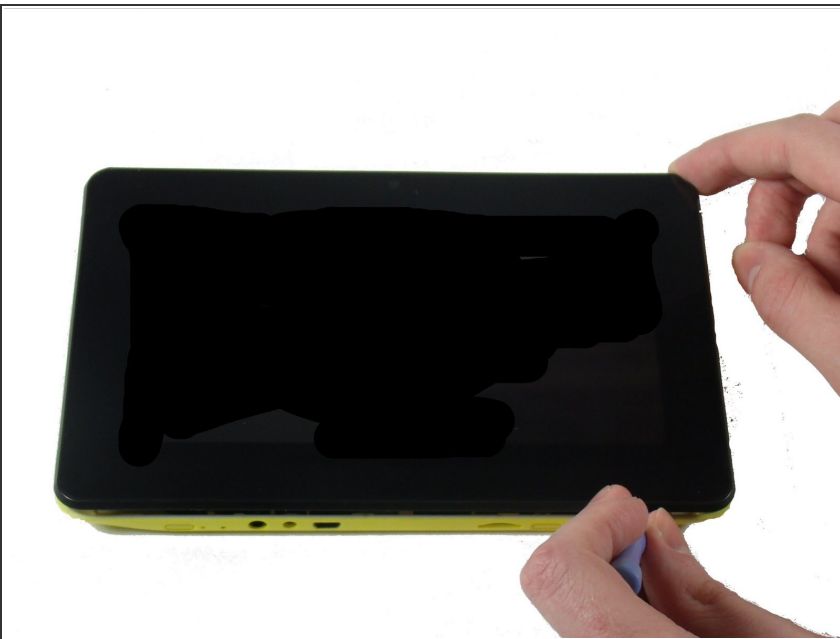
- [7" Touch Screen Display](#) (1)
-

Step 1 — Touch Screen Display



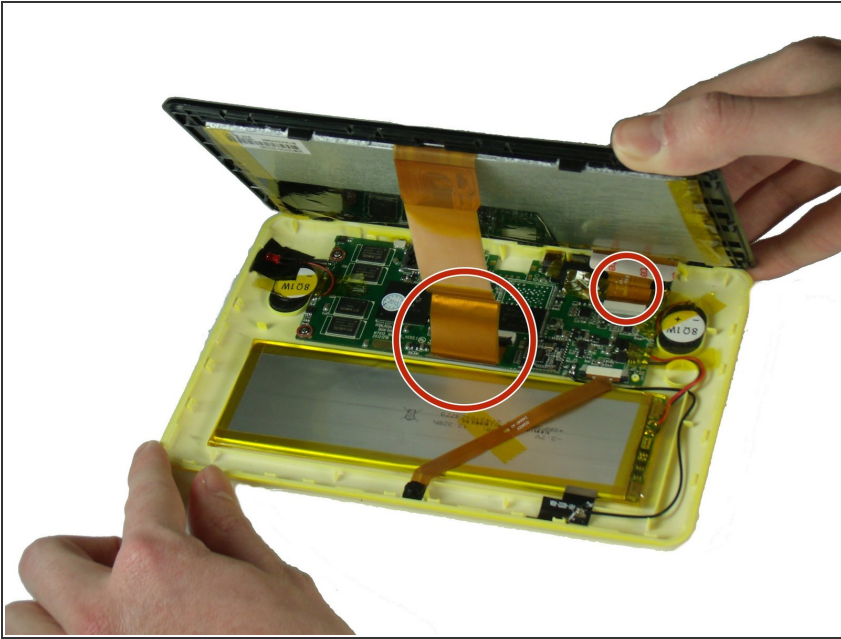
- ★ Start on the side with the camera
 - Insert a plastic opening tool into the space between the screen and the back side.
- ⓘ The screen side is black, the back side is colored

Step 2



- Press the plastic opening tool in until you hear a “click” and that part of the tablet opens.
- Press and slide the plastic opening tool around all sides of the tablet until all sides pop off.
- ⓘ The corners can be tricky. Also, You need to pry out all sides to access the inside.

Step 3




- Lift the detached screen from the camera side until you can see the inside of the tablet.
- ⚠ Don't open too fast, or you might damage the ribbon cables.

Step 4

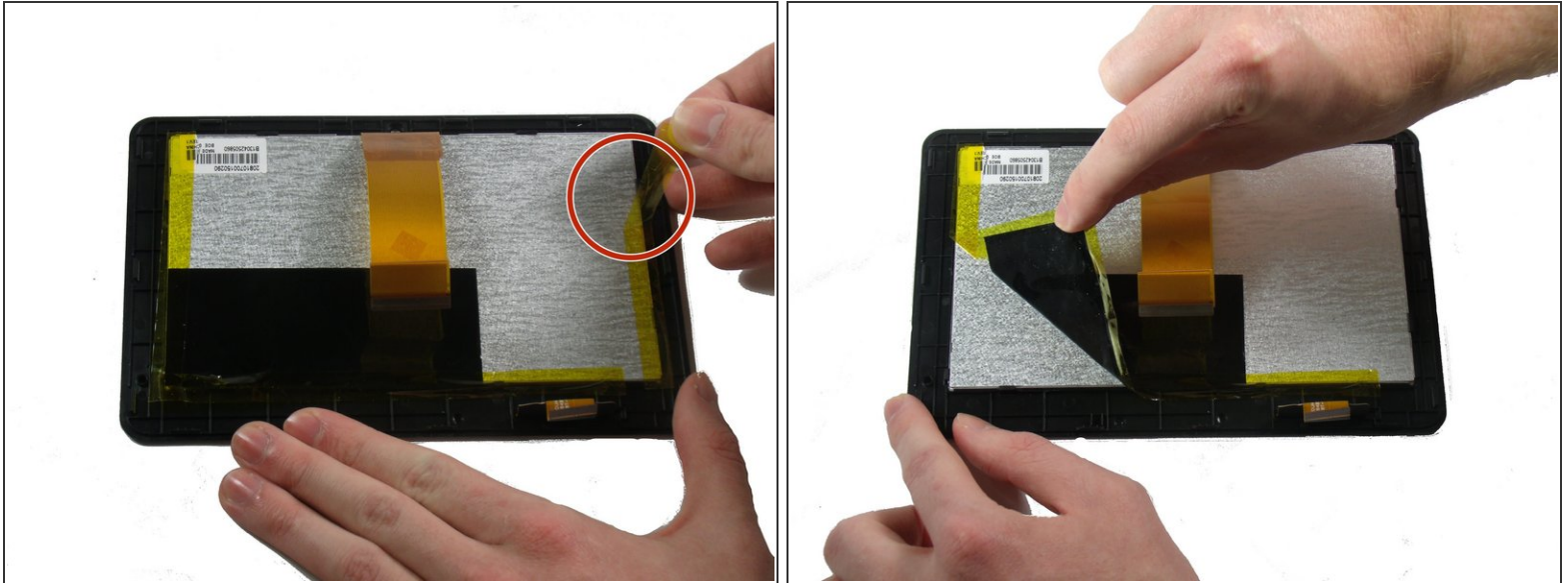


 Be careful not to damage any wires or ribbon cables during this step.

 There are two ribbon cables to remove during this step. Each is connected to a base on the motherboard.

- There is a black tab behind the long ribbon cable. Lift up the black tab.
- For the ribbon cable in the back, pull the black tabs on the side out.
- Detach the ribbon cables connecting the screen to the motherboard.
 - Remove any tape that is holding down the ribbon cables. Set it aside.
- Once the ribbon cables are freed, separate the top and bottom sides.

Step 5



- Remove the yellow tape on the right side. Easiest side to get.
- Remove the black and yellow tape stuck together on the left and bottom sides of the screen.


Step 6



- ⚠ Make sure the screen is facedown and level to prevent or reduce damage to the display.
- ⚠ There is an adhesive on the top edge of the display's face. Be careful not to damage the display.
- Flex the sides of the tablet until the clips holding the display to the screen case pop loose.

Step 7



-  Be careful not to damage the display or screen case.
- Pull the display from the top side to detach it from the screen case.

To reassemble your device, follow these instructions in reverse order.