



Closing bObi's Cover Post-Repair

How to close and seal bObi's cover after opening and addressing any internal repair.

Written By: Chelsea



INTRODUCTION

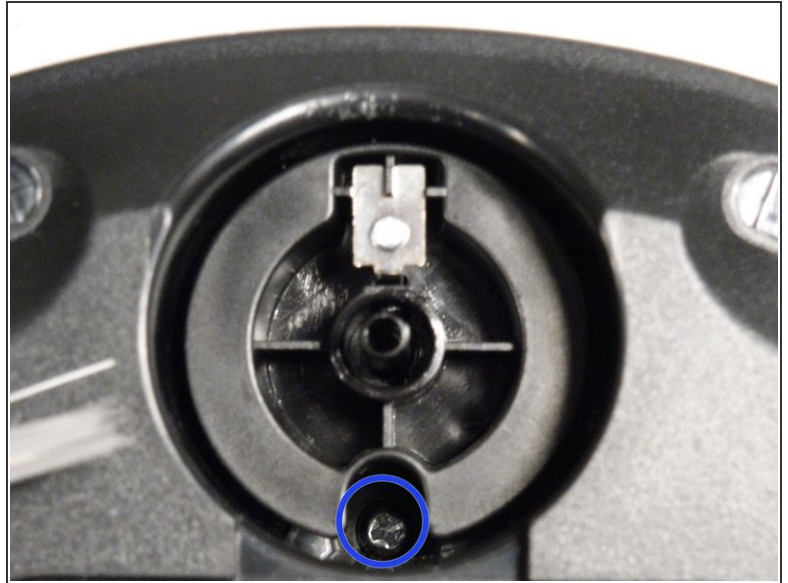
How to close and seal bObi's cover after opening and addressing any internal repair.



TOOLS:

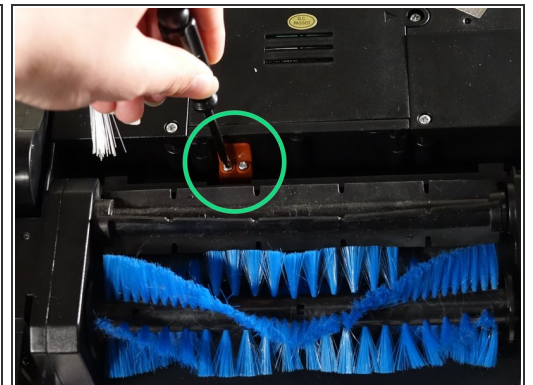
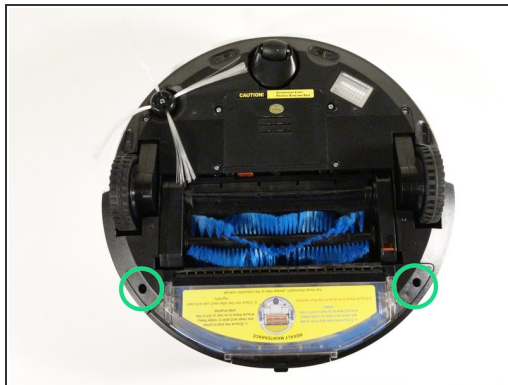
- [Phillips #2 Screwdriver](#) (1)
-

Step 1 — Top Cover



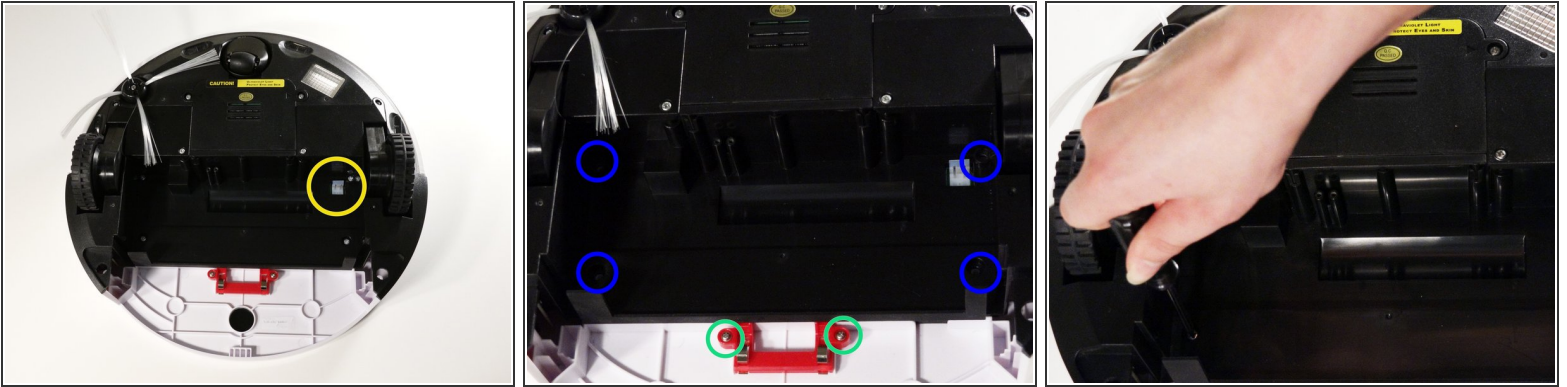
- Remove bObi's front wheel to access one of the screws holding bObi together.
- ⓘ Make sure the wheel is turned closer to bObi's front touch sensors. Use your screwdriver for leverage, and the wheel will pop up and out.
- Uninstall the larger screw that sits deeper in the wheel compartment.

Step 2



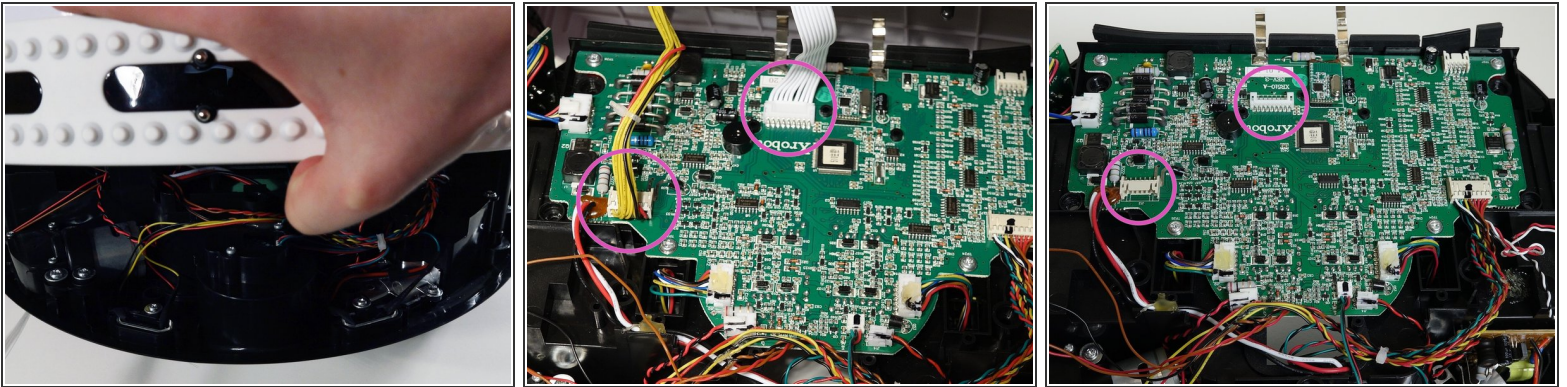
- Remove bObi's dustbin.
- Uninstall the 2 screws close to the bin and 2 smaller screws above her main brushes.

Step 3



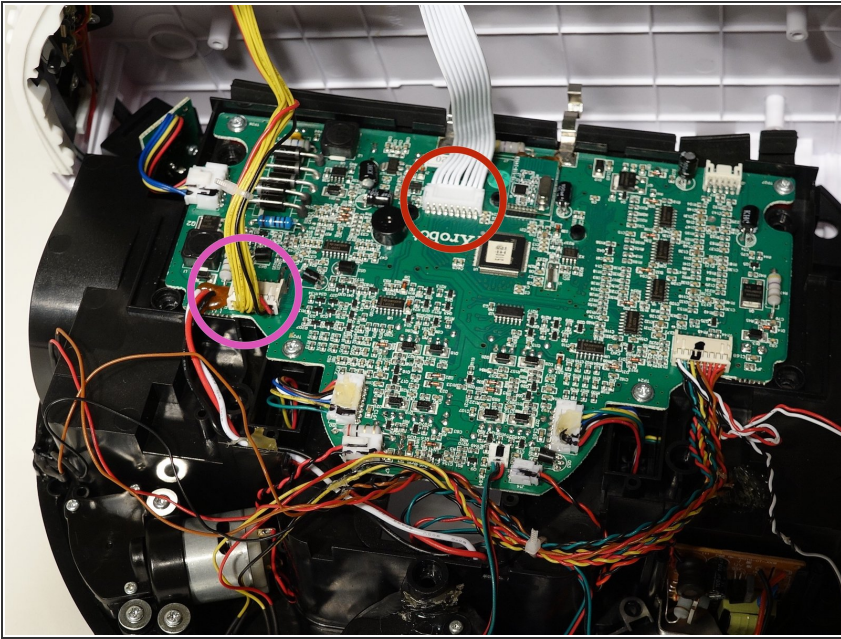
- Lift the brush holder. To detach completely, unplug it from bObi.
- Remove the two screws on the dustbin contact point holder inside bObi.
- There are 4 screws beneath the main brushes. Uninstall these, and open bObi up to expose her main circuit board.

Step 4



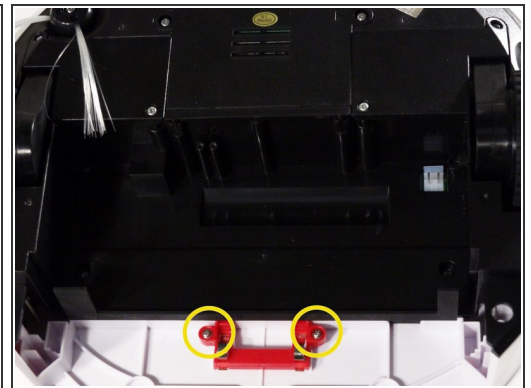
- Detach the two circuit plugs connecting bObi's cover to the main board and the cover will be completely removed.

Step 5 — Closing bObi's Cover Post-Repair



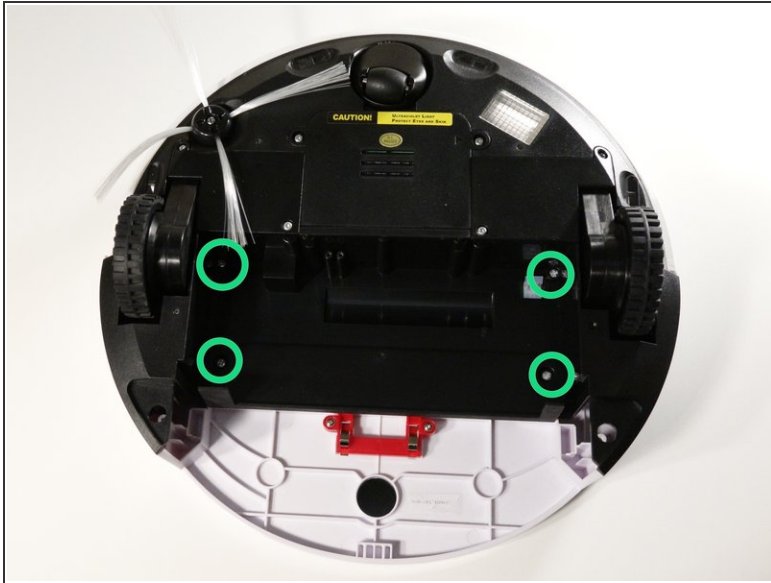
- Attach the circuit plugs from bObi's cover back on her main board.
- The all white plug goes to the centre of the circuit board.
- The smaller plug connects at the side, closer to bObi's left wheel.

Step 6



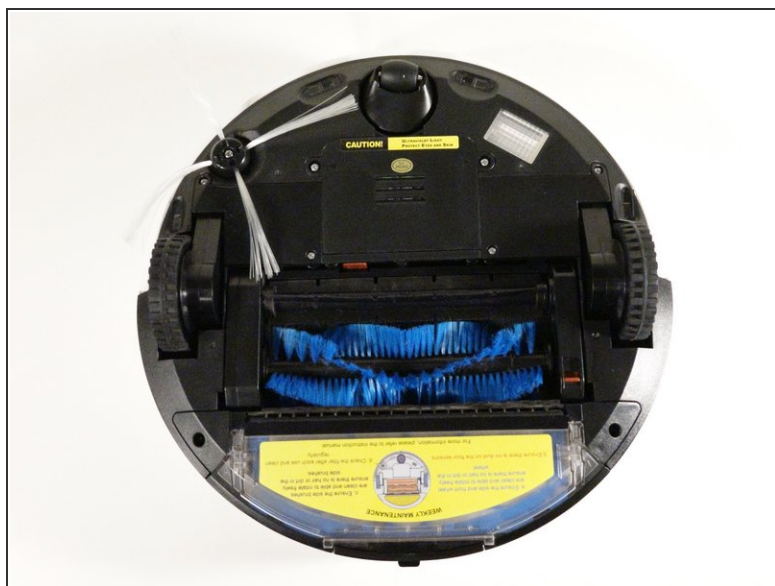
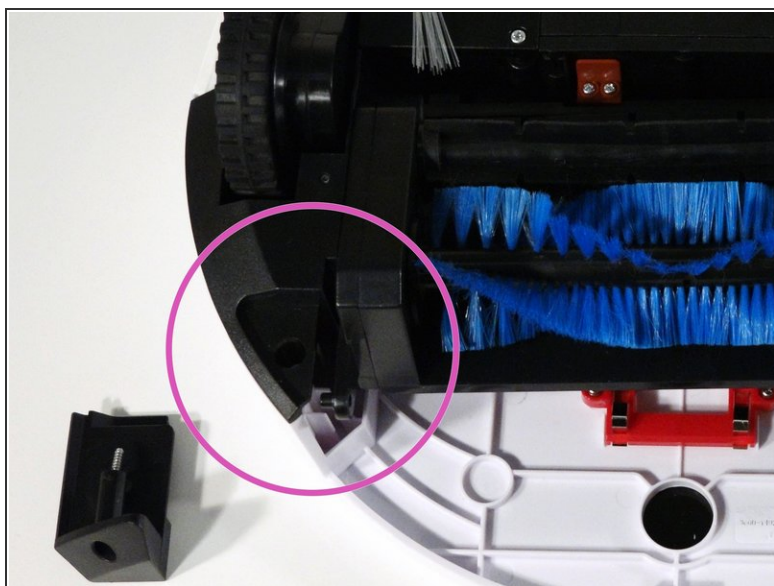
- Lay down bObi's cover and line up the sides carefully.
- Re-install the front wheel's screw.
- Place the wheel back in its compartment so it points towards bObi's touch sensors. Push down to secure it on bObi.
- Replace the dustbin contact point fastener on bObi and install its two screws.

Step 7



- Install the four screws that were previously found under the main brushes.
- Place the small main brush fastener overtop the screw posts on bObi and reinstall the two thin screws which hold it in place.
- Lay the main brush attachment in the open space.

Step 8



- Replace the corner pieces close to the dustbin and install the 2 screws securing them on bObi.
- ⓘ These corner pieces must line up correctly with the brush attachment and hold it in place.
- Insert the dustbin before using bObi again.

Follow this guide or reverse the directions of the Opening bObi guide to reassemble your device.