



Closing bObsweep's cover after repair

A guide to re-assembling bObsweep's cover after any internal repair or alteration.

Written By: Tatiana



INTRODUCTION

The following instructions will lead you through connecting bObsweep's circuit plugs, external covering, and main brush before future use.



TOOLS:

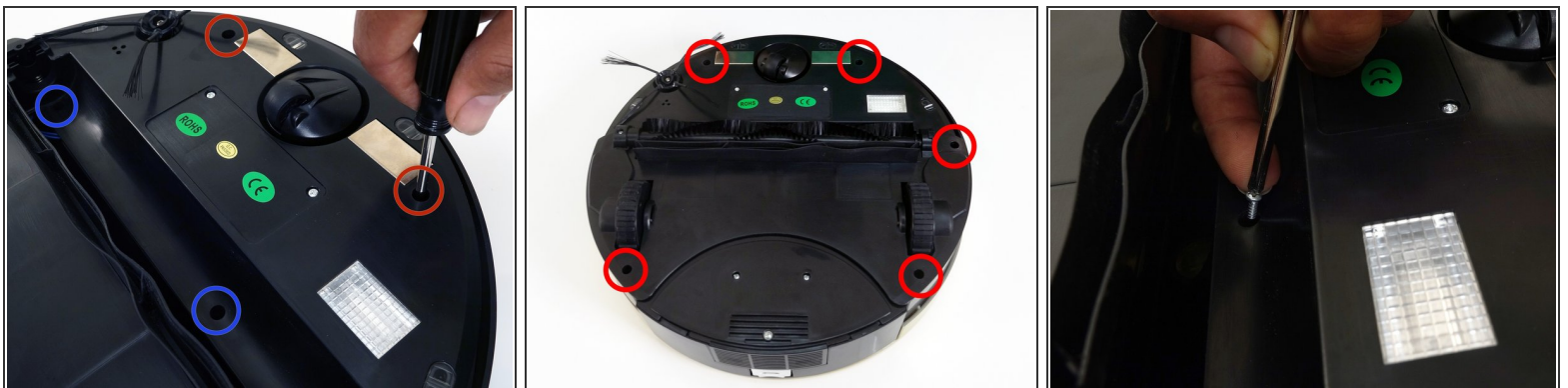
- [Phillips #2 Screwdriver](#) (1)
-

Step 1 — bObsweep's cover



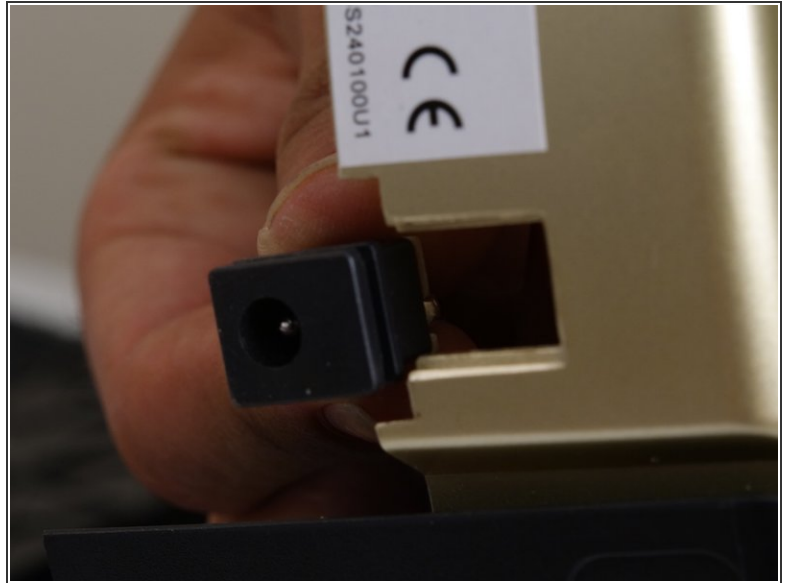
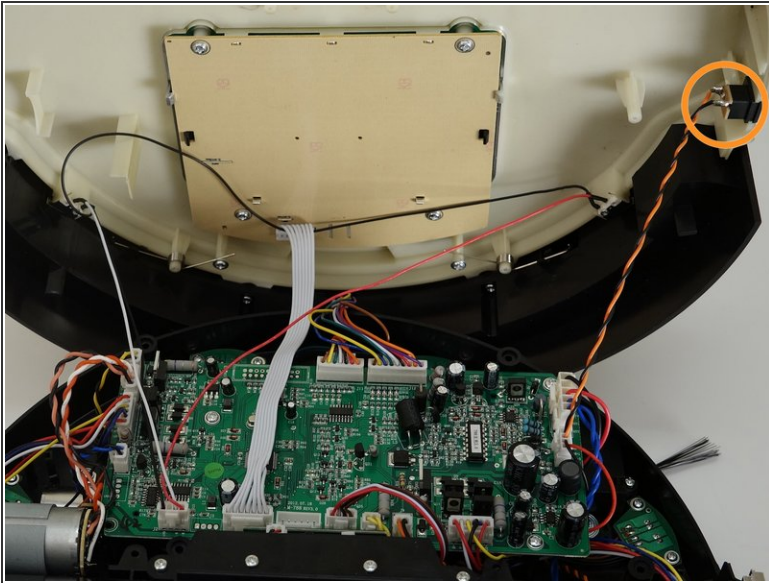
- Flip Bob over and remove the 7 screws around which hold the cover together.
 - Remove the main brush. Unscrew the holder, and lift the brush out. Reminder: Keep this screw separate from the others so you can use it later to reinstall.
- ⓘ Depending on your model, there may be only 6 screws installed on bObsweep.

Step 2



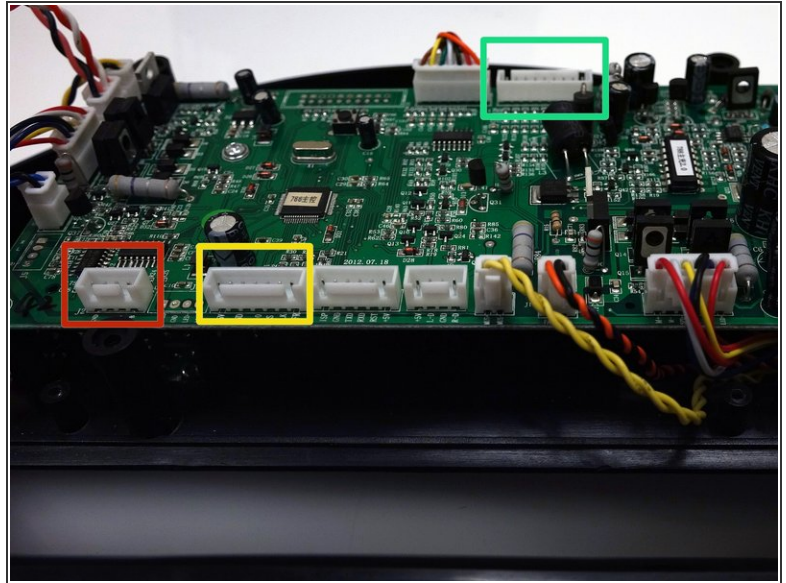
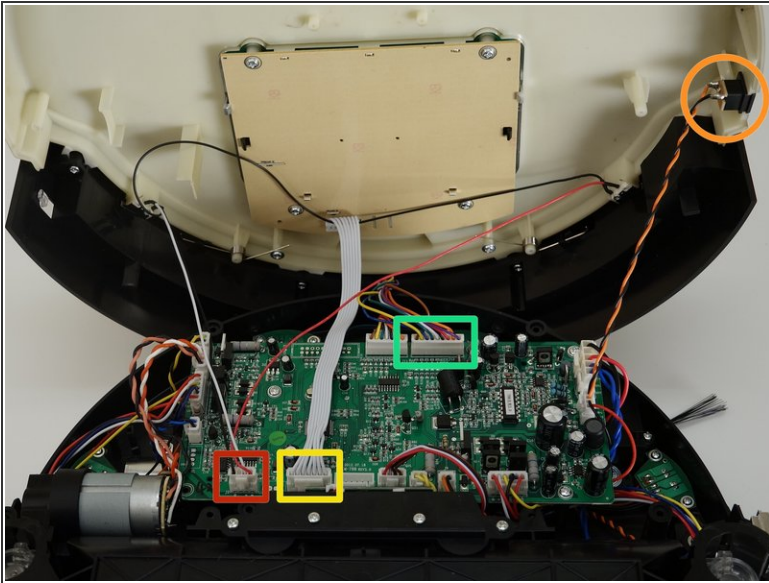
- There are two screw holes inside the brush compartment: one in the centre, one on the left end. Remove both and keep aside for reassembly.
- There are five more screws around bObsweep's edges. Two are installed at the top and bottom, and one on the right end of the main brush.

Step 3



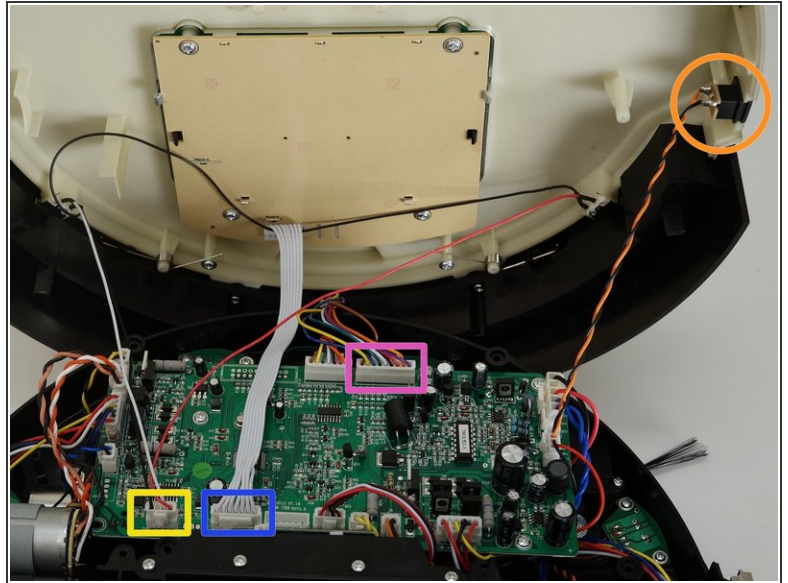
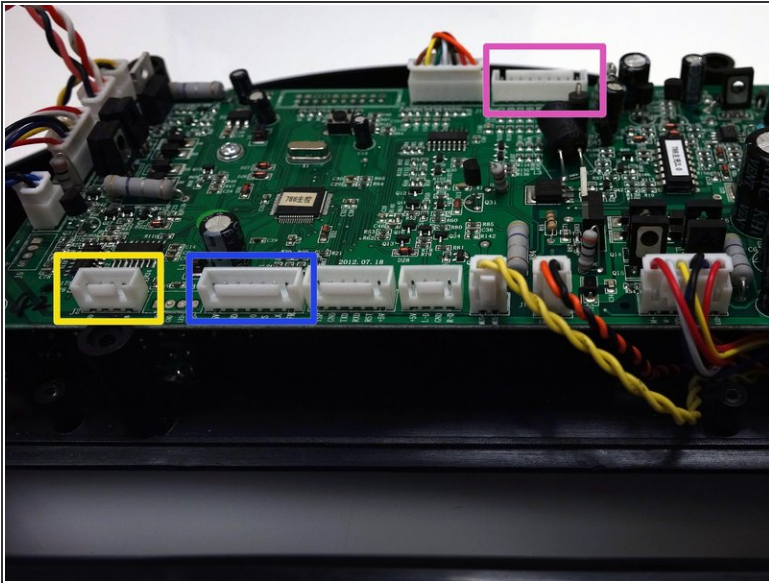
- Flip bOb back over so you can see the screen. Lift the cover up to reveal bObsweep's main board.
- Detach the power inlet from the cover. Grip and slide it out.

Step 4



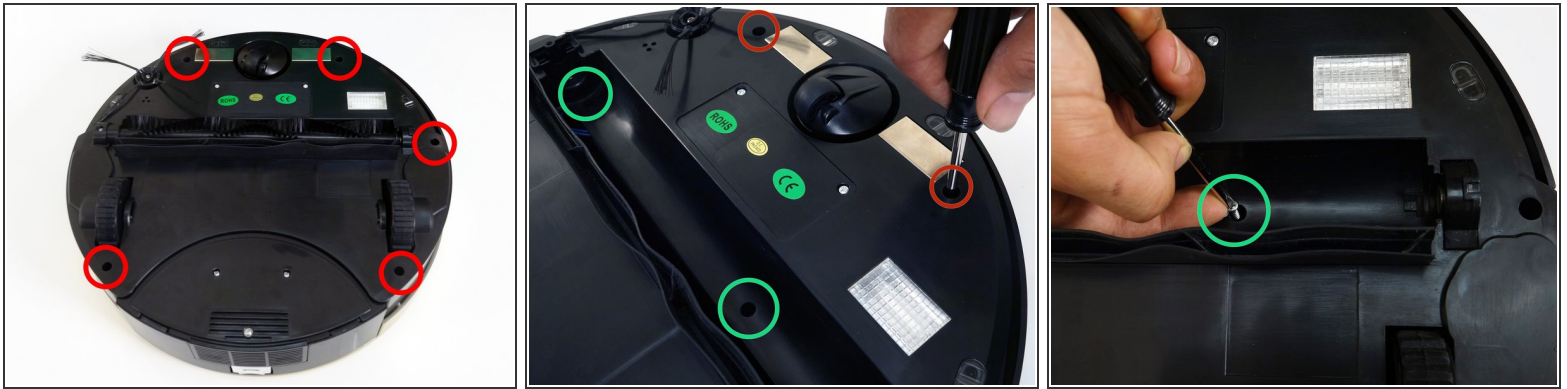
- Remove three circuit plugs from the motherboard. Pinch the small white tab on the side of each circuit plug and pull straight up to release each from the motherboard.
 - 1. On the bottom left corner: a small connector with red, black and white wires.
 - 2. One thick white wire that attaches on the right side of the previous connector.
 - 3. On the top edge of bOb's motherboard: a wide multicoloured connector.
- Place the cover aside and begin your repair.

Step 5 — Closing bObsweep's cover after repair



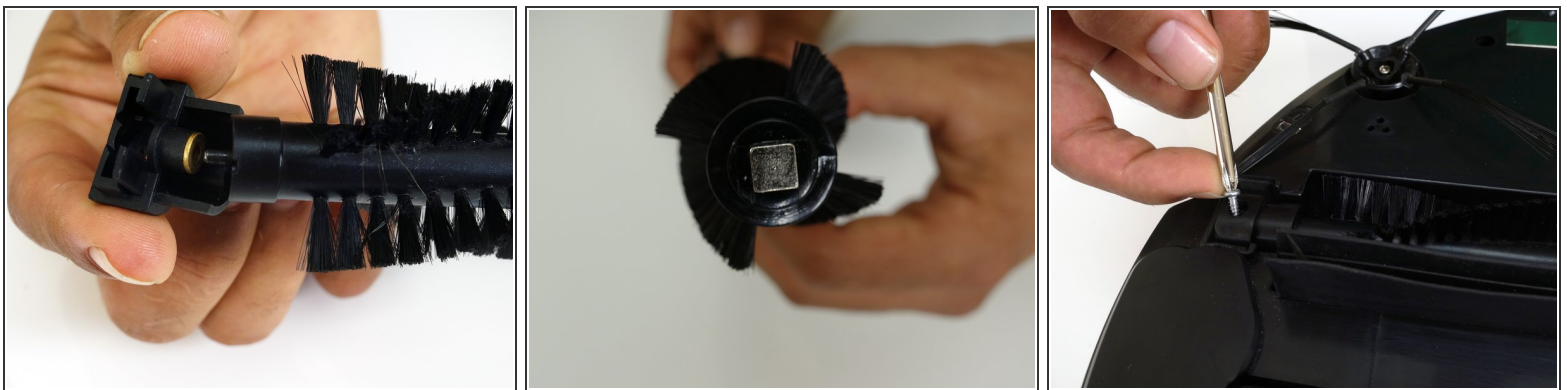
- Attach the widest circuit plug with multicoloured wires, on the top right edge of the motherboard.
- Attach the smallest circuit plug in the lower left corner of the motherboard.
- Attach the all white circuit plug to the bottom of the motherboard, in the centre of the row.
- Slide the power inlet back into the space on bObsweep's cover.
- Put bObsweep's top back on, and align the edges precisely.

Step 6



- Use a Phillips head screwdriver to reinstall the six or seven screws you removed at the start of the repair, so the cover is sealed together.
 - There are 5 along the edges of bObsweep's underside.
 - Plus one or two more in the screw holes inside the brush compartment.
- ⓘ Depending on your bObsweep model, there may be only one screw in the brush compartment.

Step 7



- ☑ Remember to reinstall the main brush before setting bObsweep to clean again.
 - Attach the end piece first.
 - Put the square end in the square space inside bObsweep, then lower the brush in place.
 - Install the screw securely.

Follow these steps after completing any internal repairs on your bObsweep.