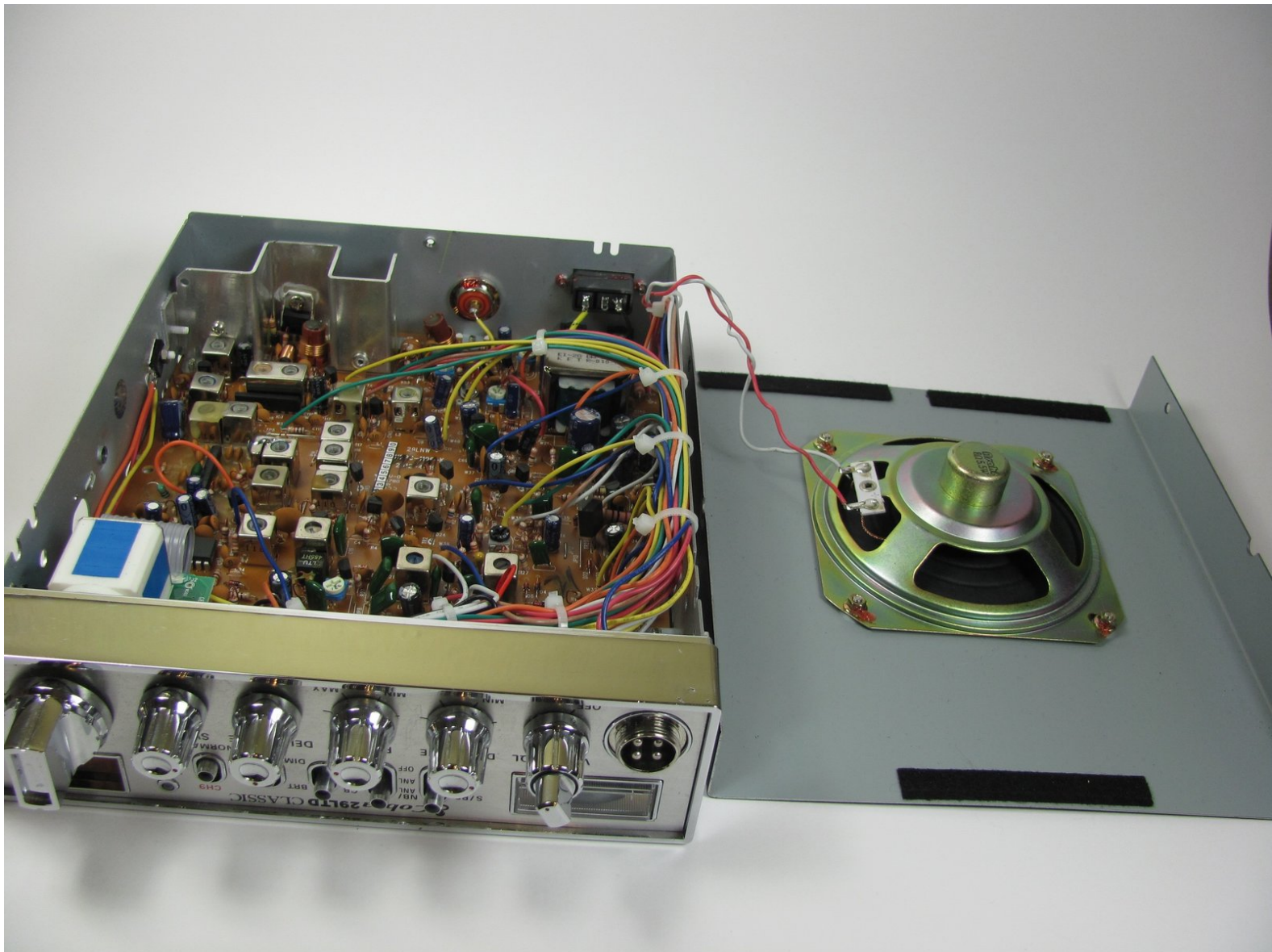




Cobra 29 LTD Classic Internal Speaker Replacement

This guide will show you how to replace the internal speaker in the Cobra 29 LTD Classic. It will show you a step-by-step manual on what you need to do.

Written By: Noah Negrey



INTRODUCTION

The internal speaker is located inside the device and it is attached to the bottom cover. Perform the guide on a flat non-conductive surface to avoid electrical shock and damage to your device.

Some steps in this guide require soldering. For information on how to solder, see the [soldering guide](#).

TOOLS:

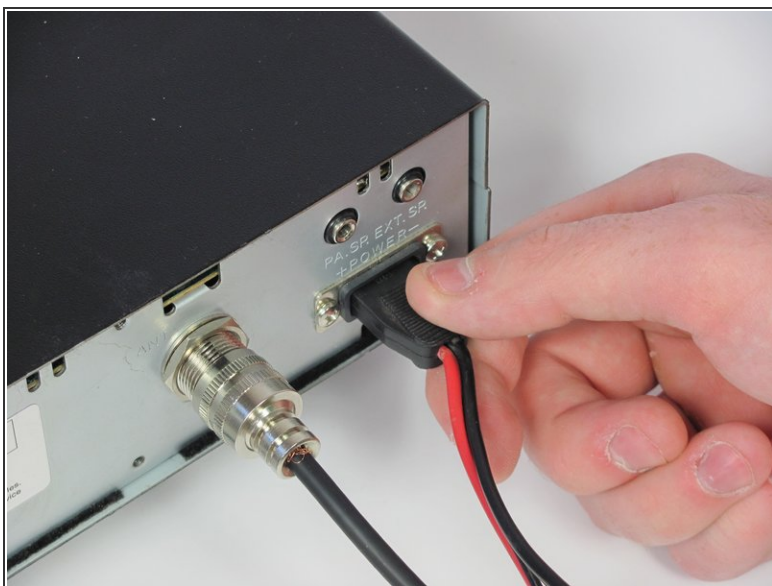
- [Phillips #1 Screwdriver](#) (1)
 - [Desoldering Braid](#) (1)
 - [Soldering Iron](#) (1)
-

Step 1 — Power Cable



- Turn the power switch, the leftmost knob, counterclockwise to off.

Step 2



- Turn the device around and firmly pull the power cable plug to remove it from the radio.

Step 3 — Antenna Cable



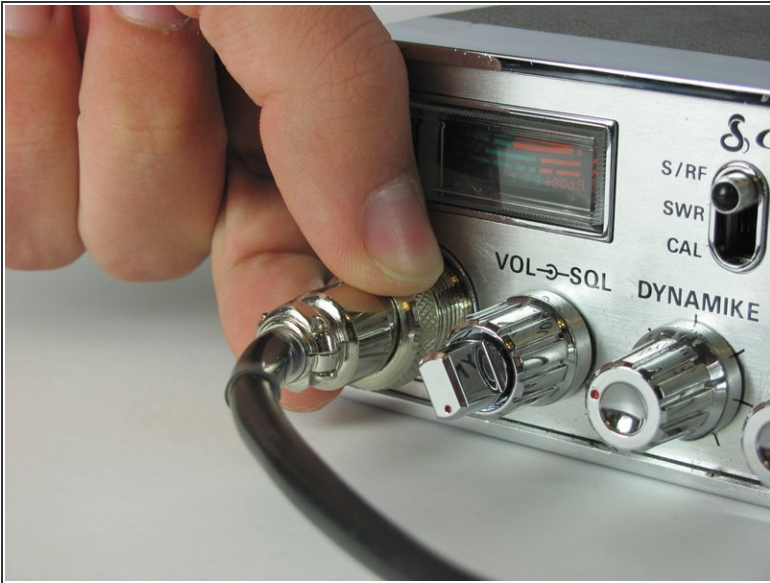
- Unscrew the securing cap counterclockwise from the antenna connector.

Step 4



- Gently pull the antenna cable to remove it from the back of the radio.

Step 5 — Microphone



- Unscrew the cap counterclockwise on the microphone plug to disconnect the cable.

Step 6



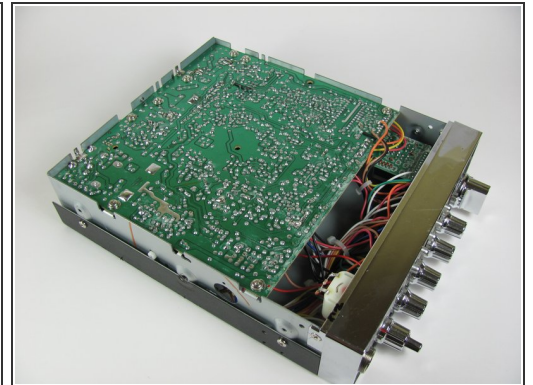
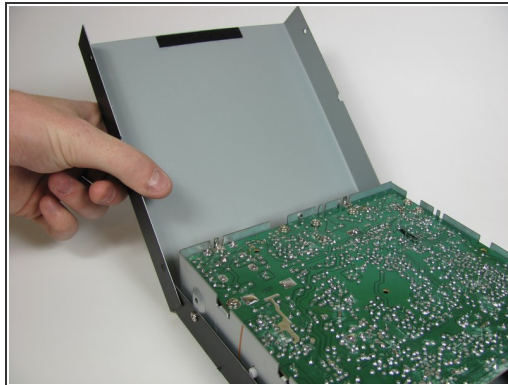
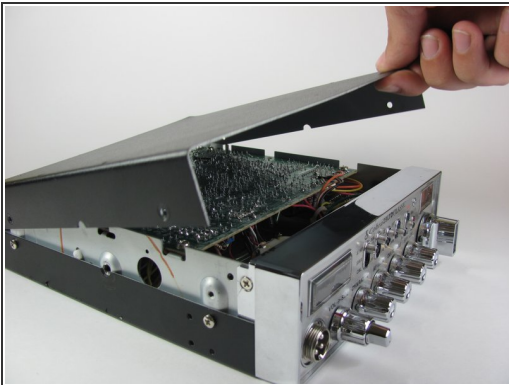
- Gently unplug the microphone plug.

Step 7 — Outer Cover



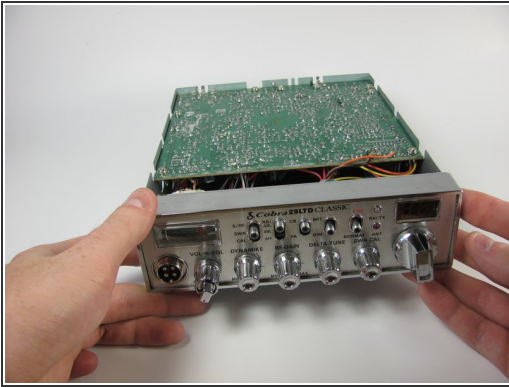
- Unscrew the top four 6.0mm Phillips head screws counterclockwise on the left and right side of the device using a #1 Phillips head screwdriver.


Step 8



- Gently lift and remove the top cover.

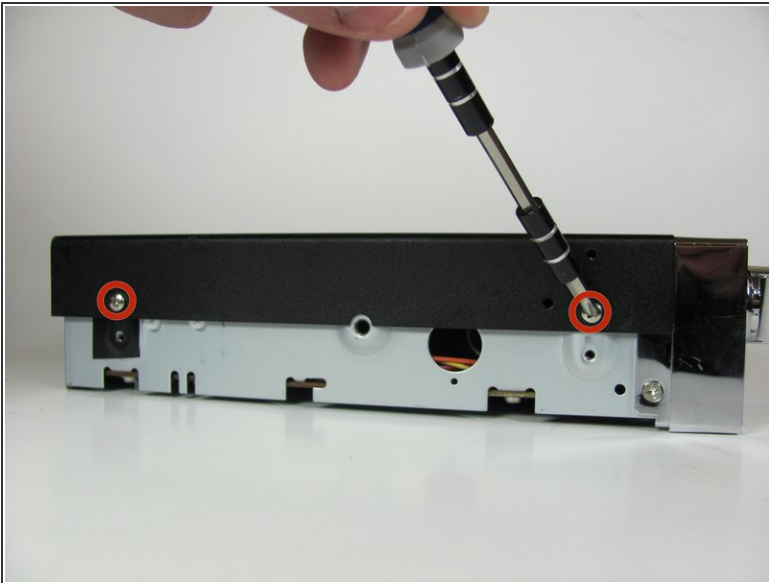
Step 9



 Gently set down on a hard, flat, non-conductive surface to minimize risk of shock or breaking your radio.

- Carefully flip the radio over.


Step 10



- Unscrew the four 6.0mm Phillips head screws counterclockwise on the left and right side of the device that connect the remaining cover, using a #1 Phillips head screwdriver.

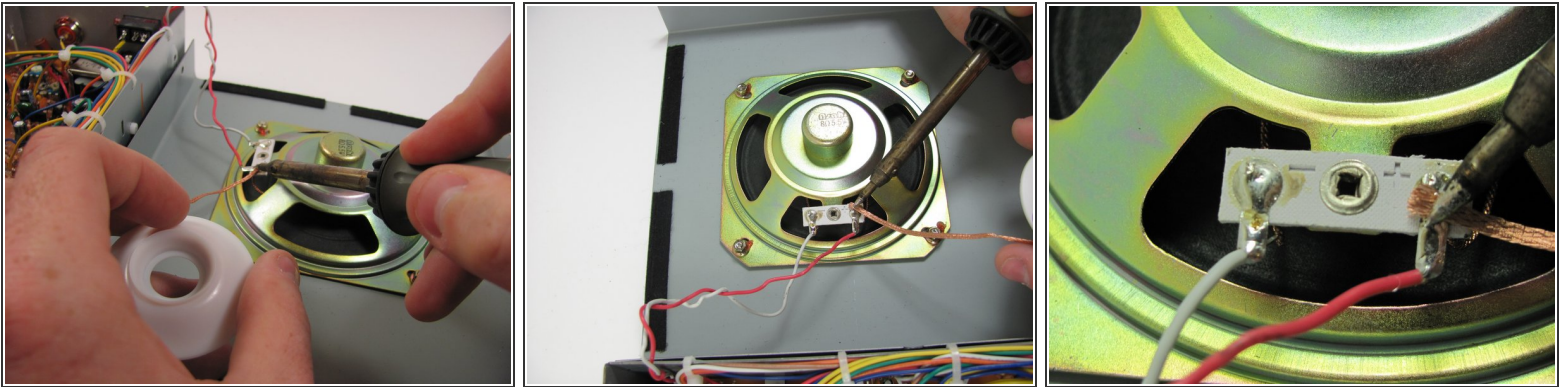
Step 11



 Watch out for the wires connected to the speaker. These short wires will not allow you to move the cover very far.

- Gently lift and remove the case cover.

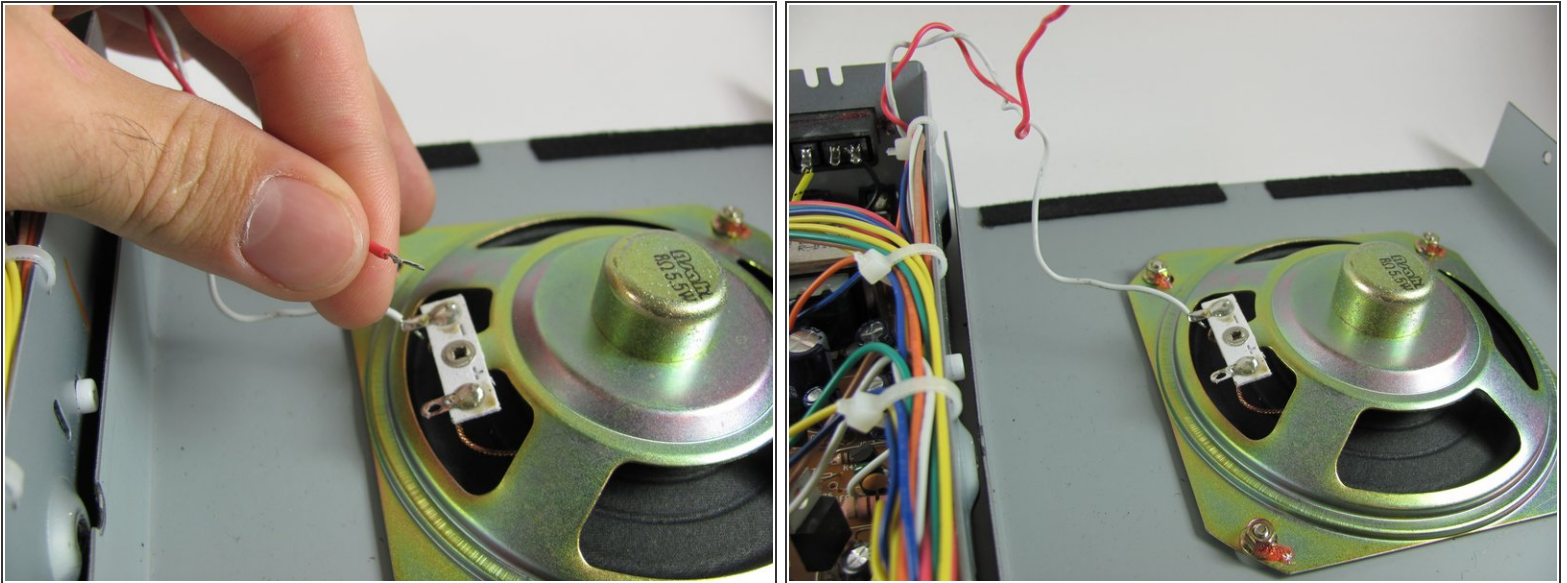
Step 12 — Internal Speaker



- [De-solder](#) the red wire that is connected to the internal speaker, with a soldering iron and the desoldering wick.

 During reassembly you will need to [resolder](#) the components back together.

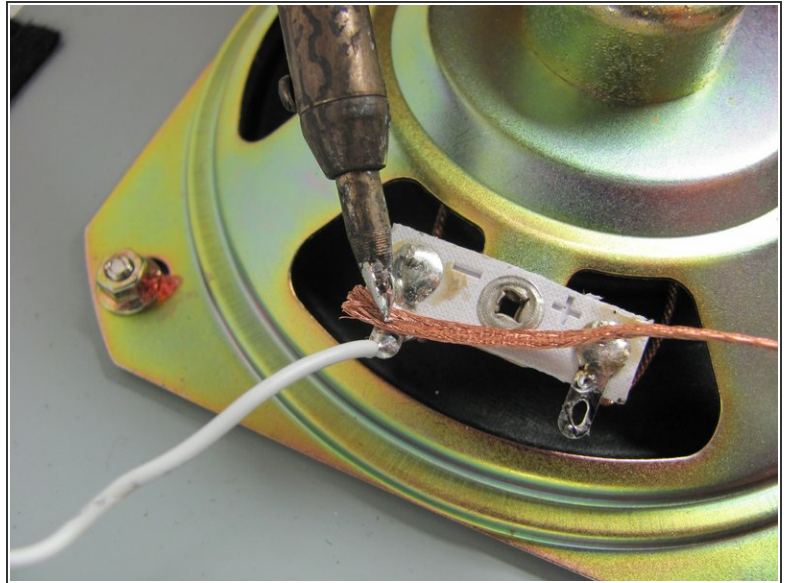
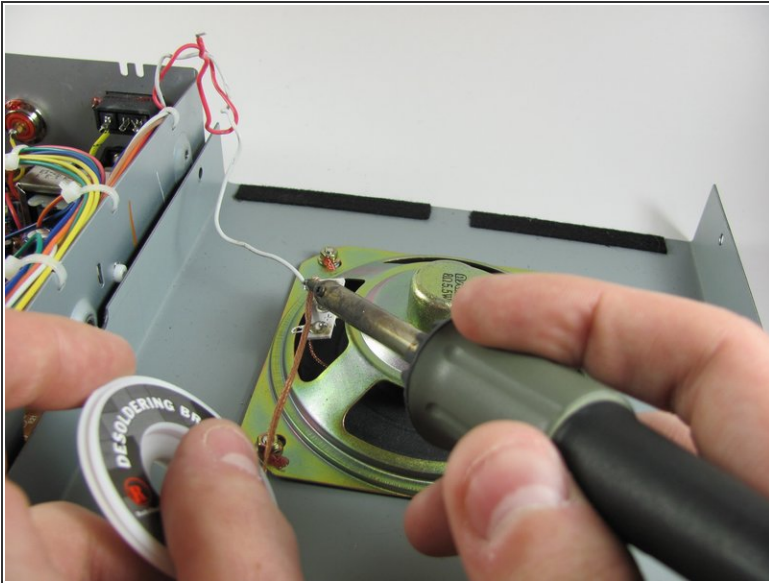
Step 13



⚠ The wire may still be hot, so let it sit for 30 seconds before continuing.

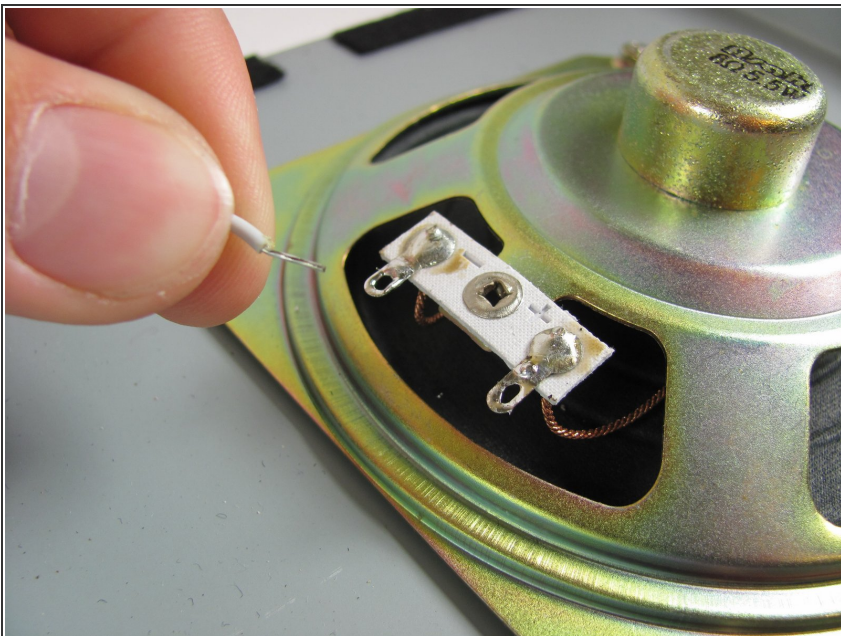
- Remove the red wire and make sure it is out of the way.

Step 14



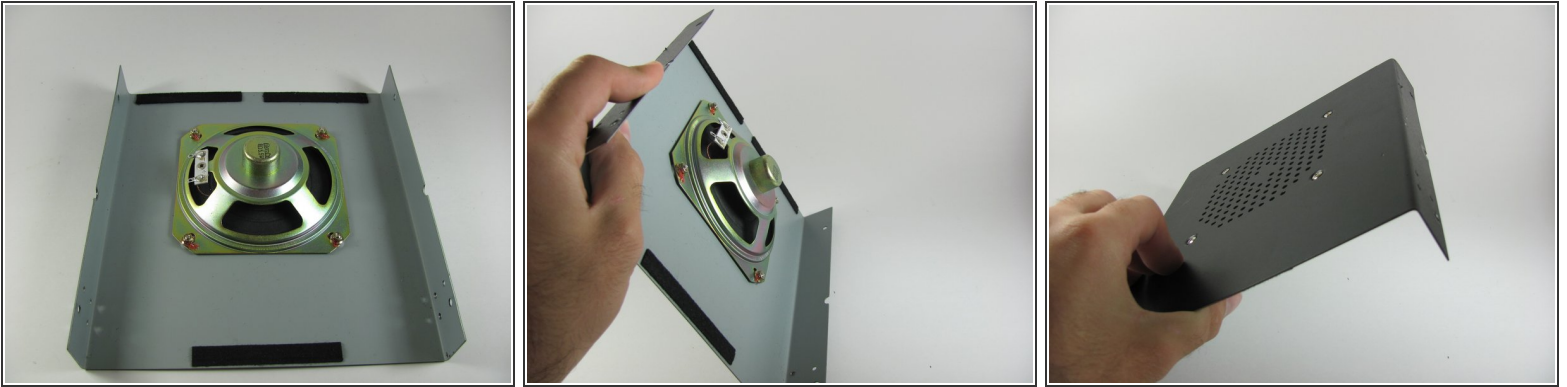
- [De-solder](#) the white wire that is connected to the internal speaker, with a soldering iron and the desoldering wick.
- During reassembly you will need to [resolder](#) the components back together.

Step 15



- ⚠ The wire may still be hot, so let it sit for 30 seconds before continuing.
- Pull the white wire out and set it aside.
- ⓘ The cover with the internal speaker should be completely separate from the device at this point.

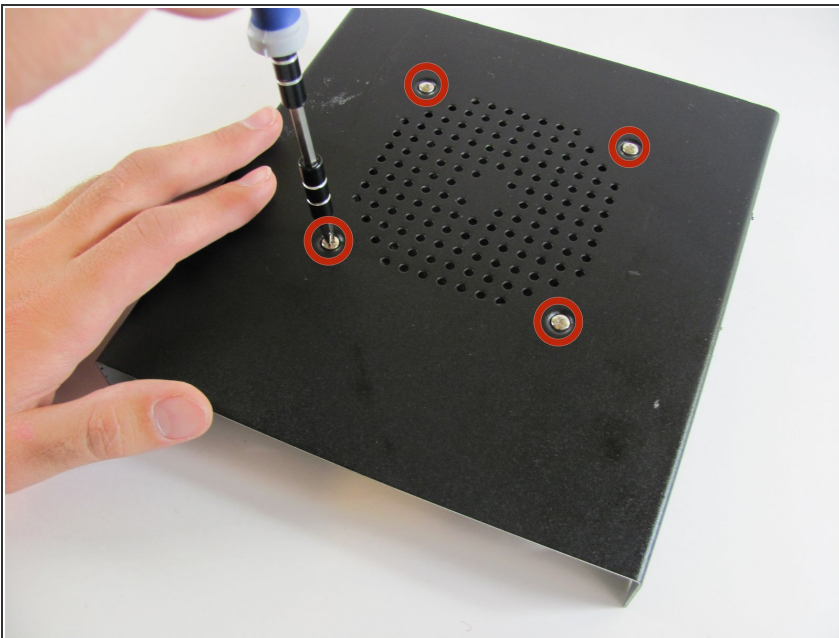
Step 16



- Gently flip the cover over.

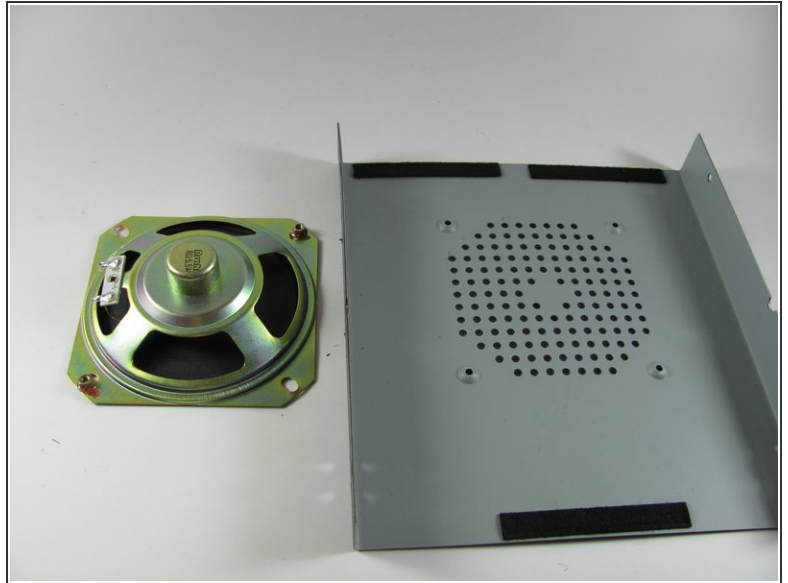
i The main body should be set aside on a non-static and flat surface. The cover with the internal speaker should now be by itself.

Step 17



- Unscrew the four 6.0 mm screws counterclockwise that surround the grate with a #1 Phillips Screwdriver.
- i** When removing the four screws, the speaker may detach before you flip over the cover.

Step 18



- Flip the cover over and remove the speaker from the cover.
- ⓘ The nuts should remain attached to the speaker by lock-tight glue, however some might fall off.

To reassemble your device, follow these instructions in reverse order.