



# Cobra 29 LTD Classic Power Port Replacement

This guide will show you how to replace the power port on your Cobra 29 LTD Classic.

Written By: Noah Negrey



---

## INTRODUCTION

The power connector connects to the power port and provides power to the device. The power port is located on the back of the device. Perform the guide on a flat non-conductive surface to avoid electrical shock and damage to your device.

Some steps in this guide require soldering. For information on how to solder, see the [soldering guide](#).



### TOOLS:

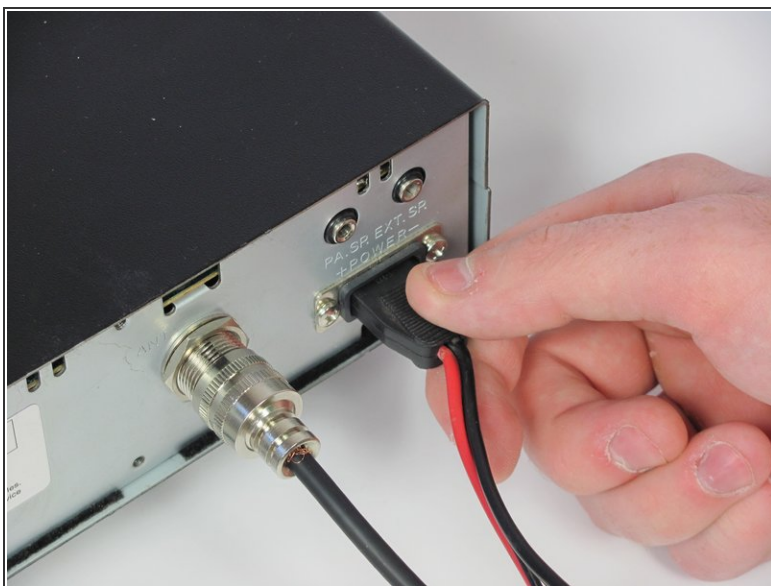
- [Phillips #1 Screwdriver](#) (1)
  - [Soldering Iron](#) (1)
  - [Desoldering Braid](#) (1)
-

## Step 1 — Power Cable



- Turn the power switch, the leftmost knob, counterclockwise to off.

## Step 2



- Turn the device around and firmly pull the power cable plug to remove it from the radio.



### Step 3 — Antenna Cable



- Unscrew the securing cap counterclockwise from the antenna connector.

### Step 4



- Gently pull the antenna cable to remove it from the back of the radio.

## Step 5 — Microphone



- Unscrew the cap counterclockwise on the microphone plug to disconnect the cable.

## Step 6



- Gently unplug the microphone plug.

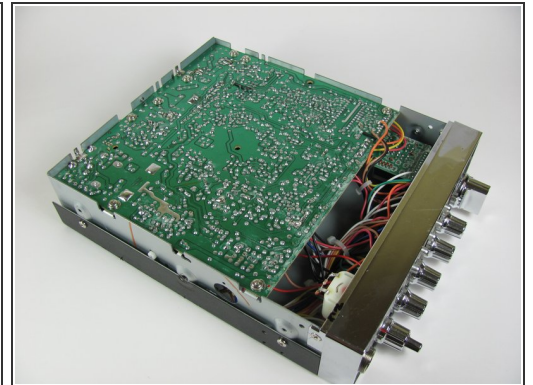
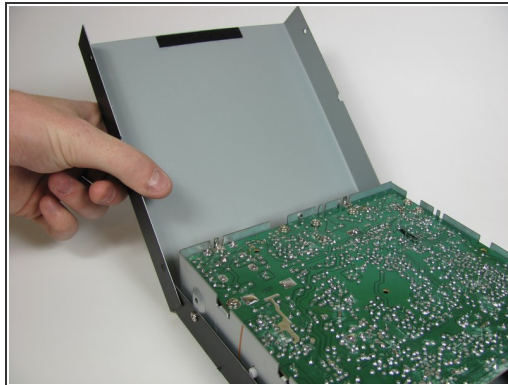
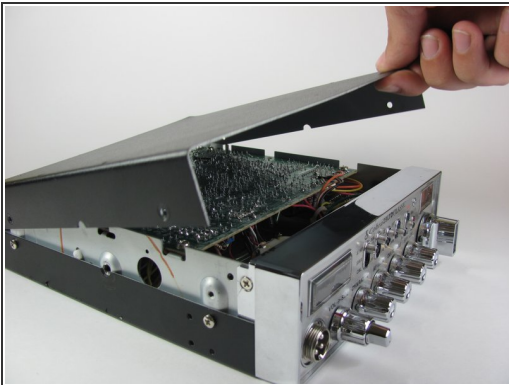


## Step 7 — Outer Cover



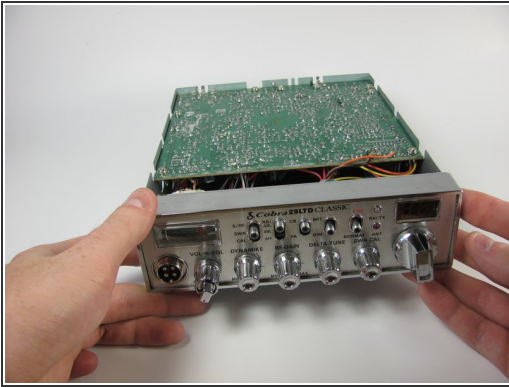
- Unscrew the top four 6.0mm Phillips head screws counterclockwise on the left and right side of the device using a #1 Phillips head screwdriver.


## Step 8



- Gently lift and remove the top cover.

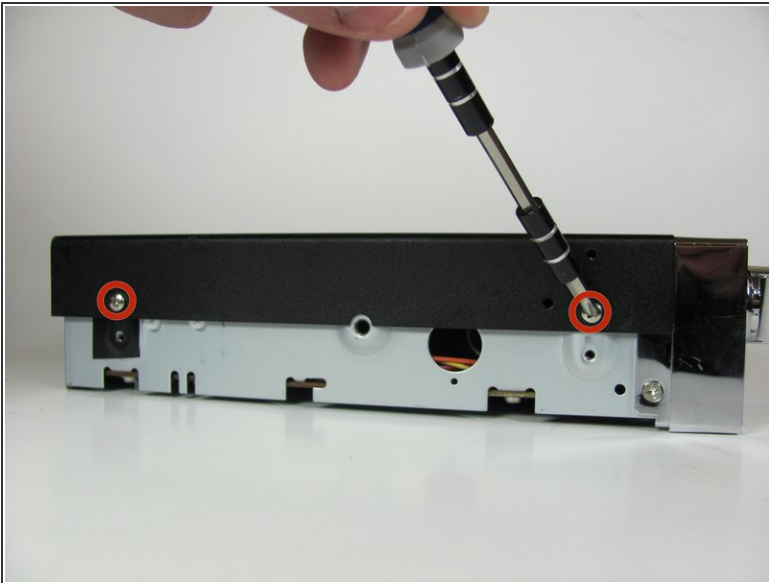
## Step 9



 Gently set down on a hard, flat, non-conductive surface to minimize risk of shock or breaking your radio.

- Carefully flip the radio over.

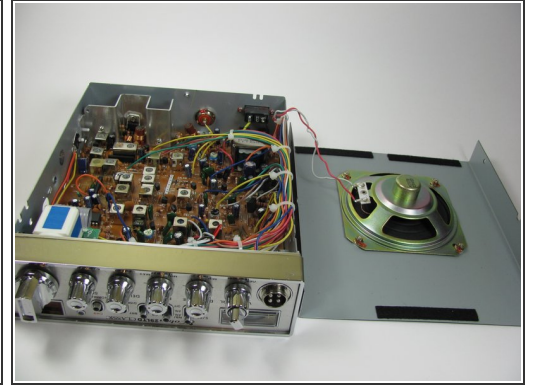
## Step 10




- Unscrew the four 6.0mm Phillips head screws counterclockwise on the left and right side of the device that connect the remaining cover, using a #1 Phillips head screwdriver.



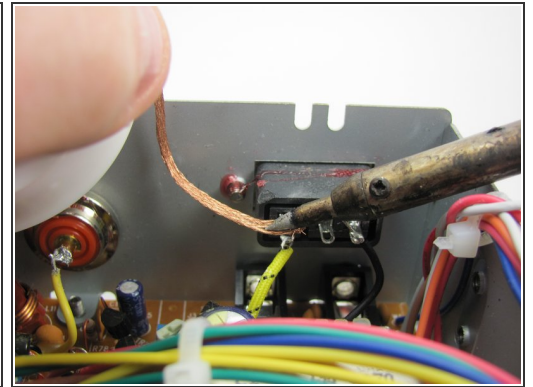
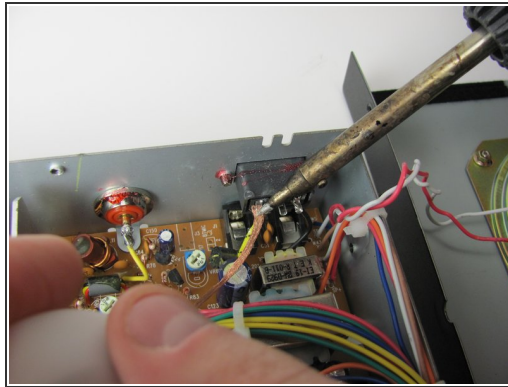
## Step 11



 Watch out for the wires connected to the speaker. These short wires will not allow you to move the cover very far.

- Gently lift and remove the case cover.

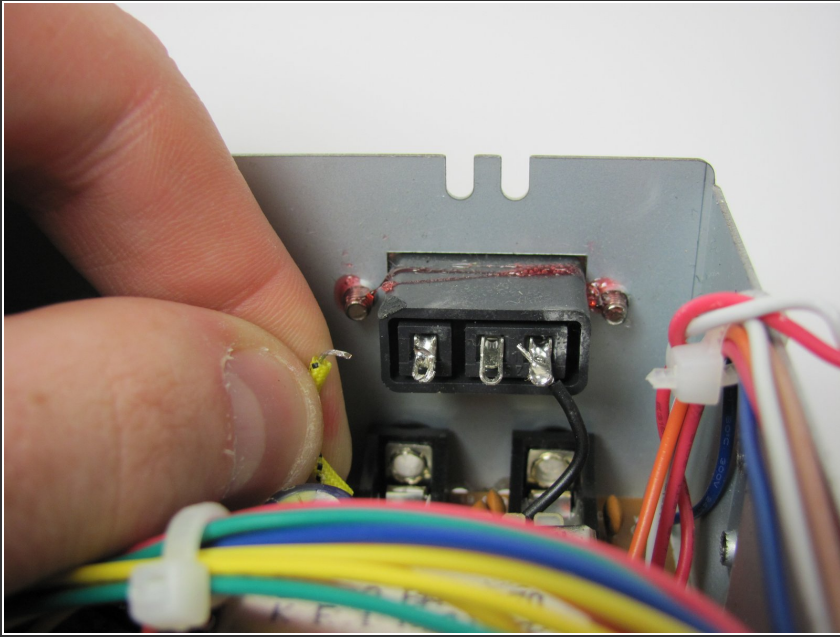
## Step 12 — Power Port



- [De-solder](#) the yellow wire that is connected to the power port, with a soldering iron and the desoldering wick.
- During reassembly you will need to [resolder](#) the components back together.



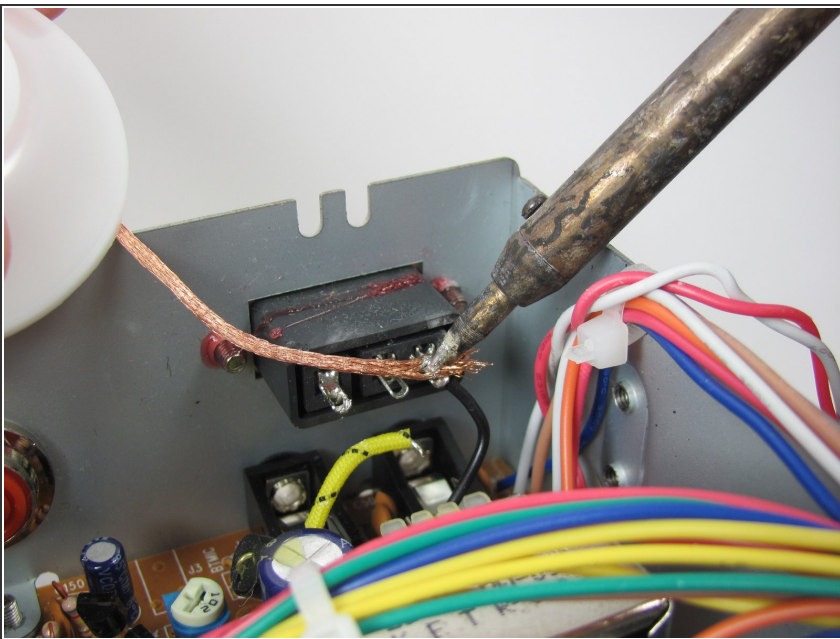
## Step 13



⚠ The wire may still be hot, so let it sit for 30 seconds before continuing.

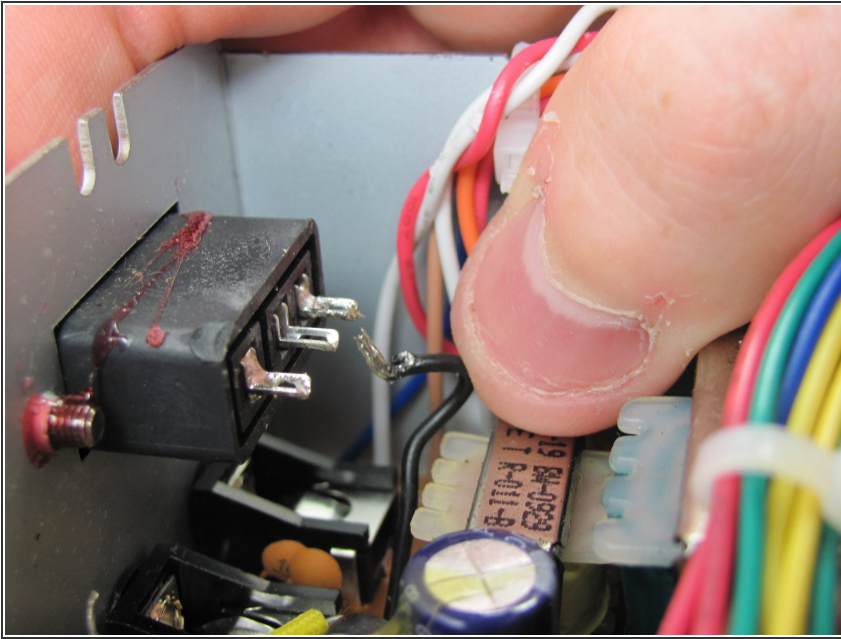
- Remove the yellow wire from the power port.

## Step 14



- [De-solder](#) the black wire that is connected to the power port, with a soldering iron and the desoldering wick.
- During reassembly you will need to [resolder](#) the components back together.

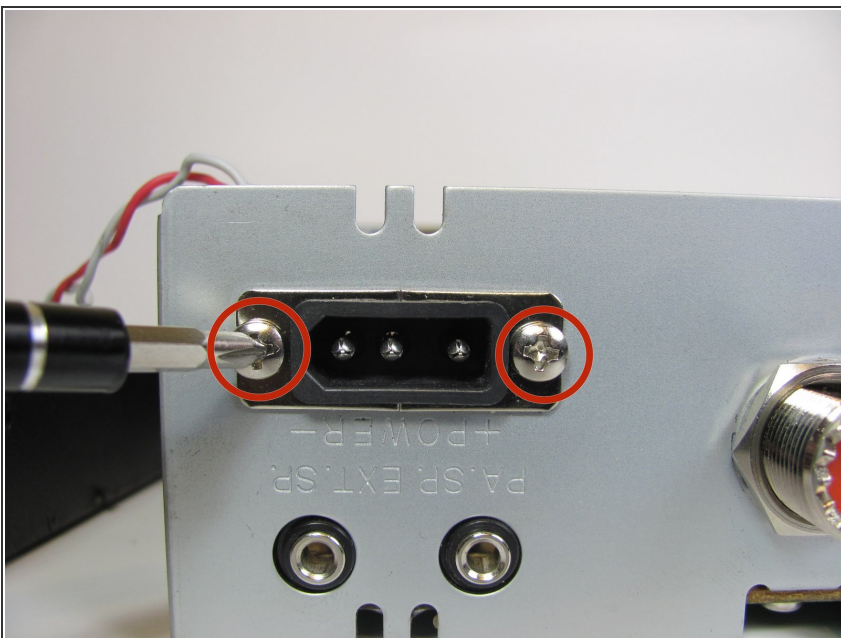
## Step 15



⚠ The wire may still be hot, so let it sit for 30 seconds before continuing.

- Remove the black wire from the power port.

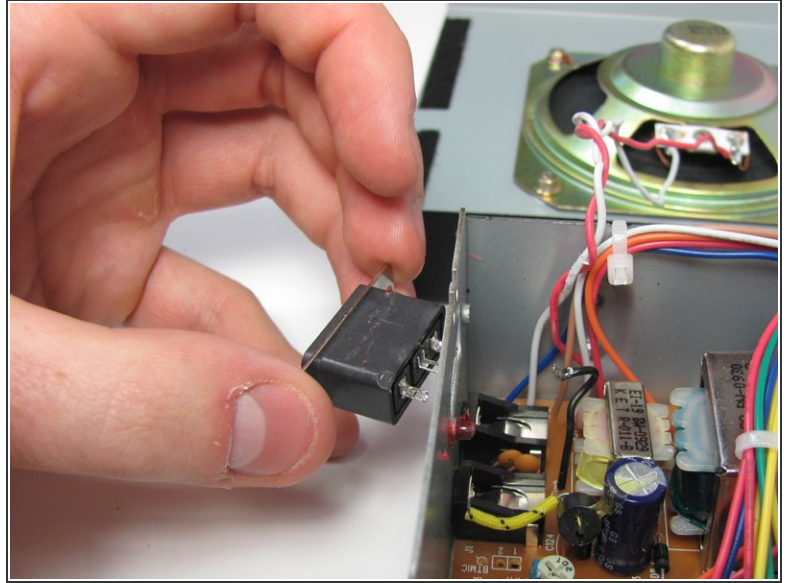
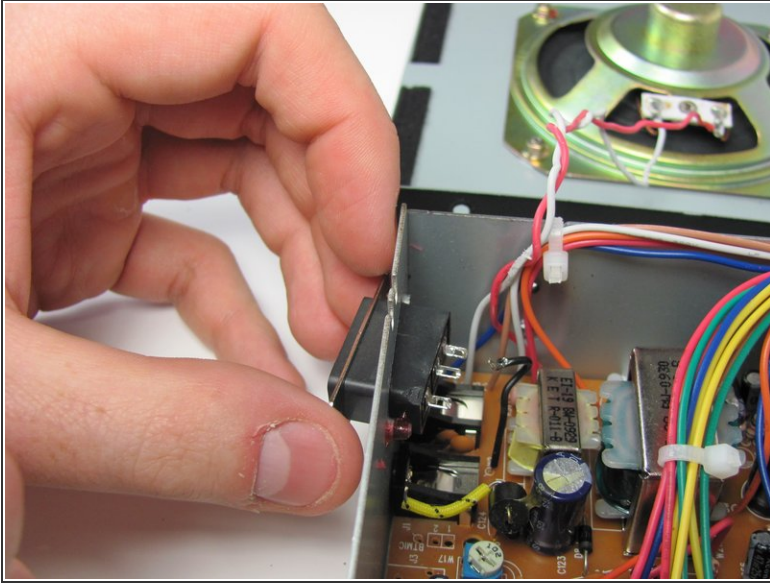
## Step 16



- Unscrew the two 6mm Phillips screws counterclockwise, using a #1 Phillips head screwdriver.

ⓘ If screws have lock-tight glue on them, use a strong force to initially remove the screws from the device.

## Step 17



- Gently pull the power port out of the case.

To reassemble your device, follow these instructions in reverse order.