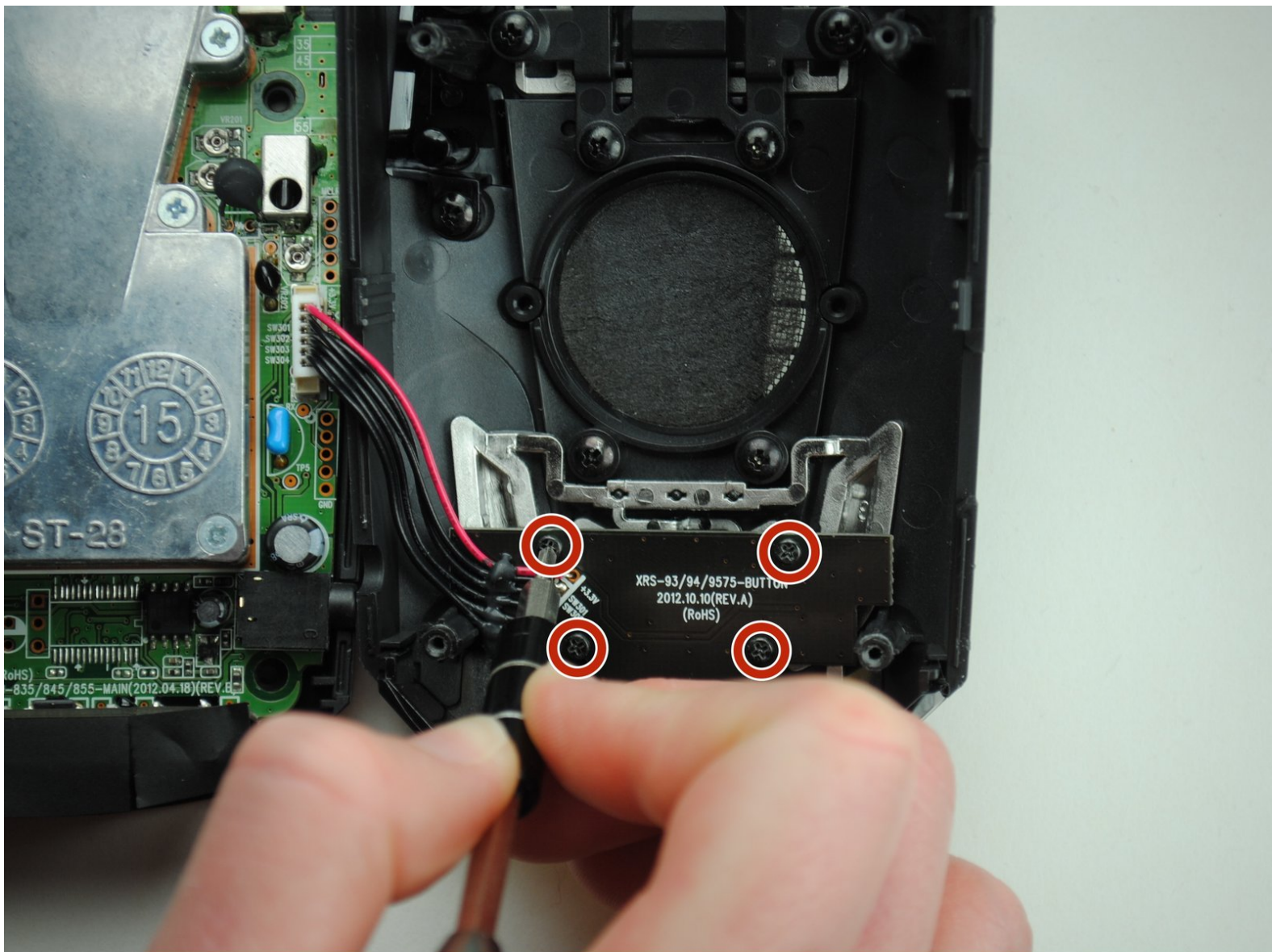




# Cobra SPX 5300 Buttonboard Disassembly

Use this guide to access and disassemble the buttonboard.

Written By: Megan McDonough



---

## INTRODUCTION

This guide will walk you through removing the buttonboard. Removing the buttonboard will give you access to the buttons and the display screen.

---

### TOOLS:

- [Phillips #0 Screwdriver](#) (1)
  - [Phillips #00 Screwdriver](#) (1)
-

## Step 1 — Windshield Bracket Mount



- Remove the four 9.5 mm Phillips #0 screws from the back of the device.

## Step 2



- Pull the black plastic back case off of the device.



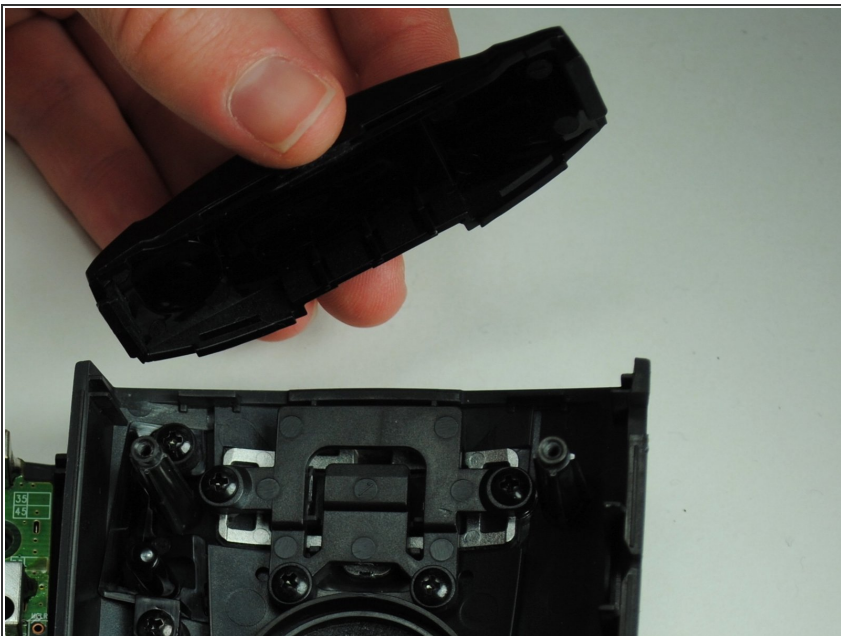
## Step 3



- Lift up the motherboard and lay it flat next to the device.

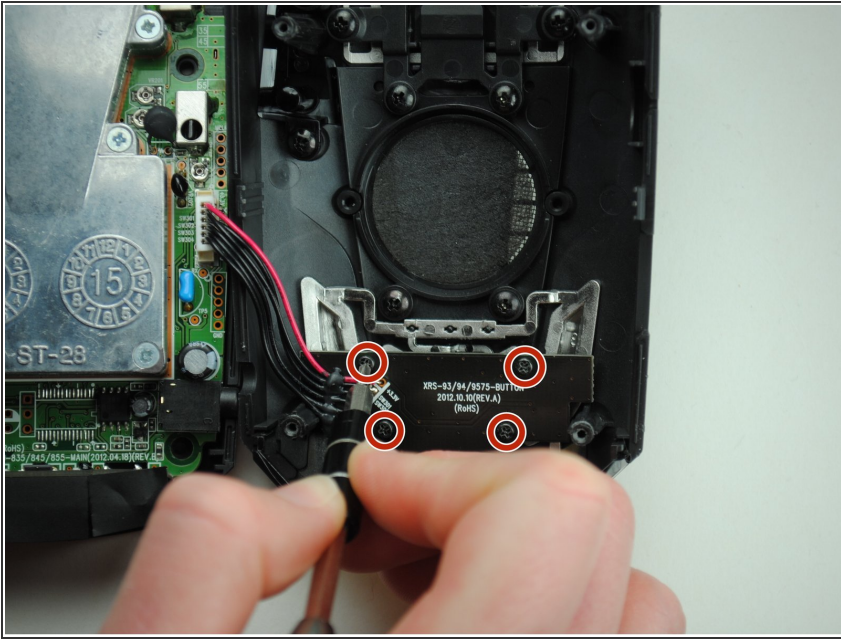
⚠ Be careful not to sever the wires. The buttonboard is connected to the motherboard by the wires.

## Step 4



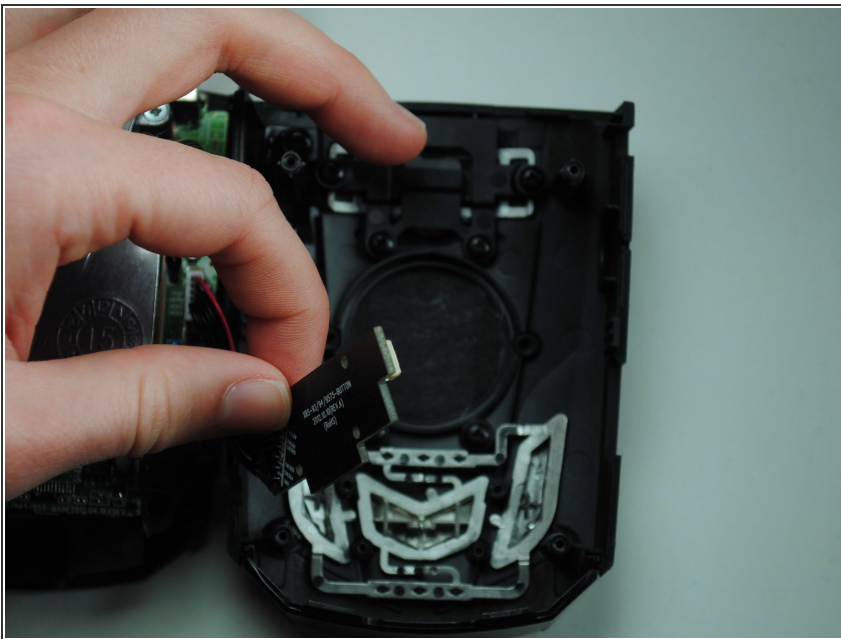
- Remove the windshield bracket mount.

## Step 5 — Buttonboard



- Remove the four 4.8 mm Phillips #00 screws from the buttonboard.

## Step 6



- Lift buttonboard to expose silver button plate.

To reassemble your device, follow these instructions in reverse order.