



Coby Kyros MID9042 Battery Replacement

If your battery needs to be replaced, follow these simple steps.

Written By: Samantha Rollings





TOOLS:

- [Phillips #0 Screwdriver](#) (1)
- [iFixit Opening Tools](#) (1)
- [Tweezers](#) (1)
- [Soldering Iron](#) (1)




PARTS:

- [coby kryos battery](#) (1)

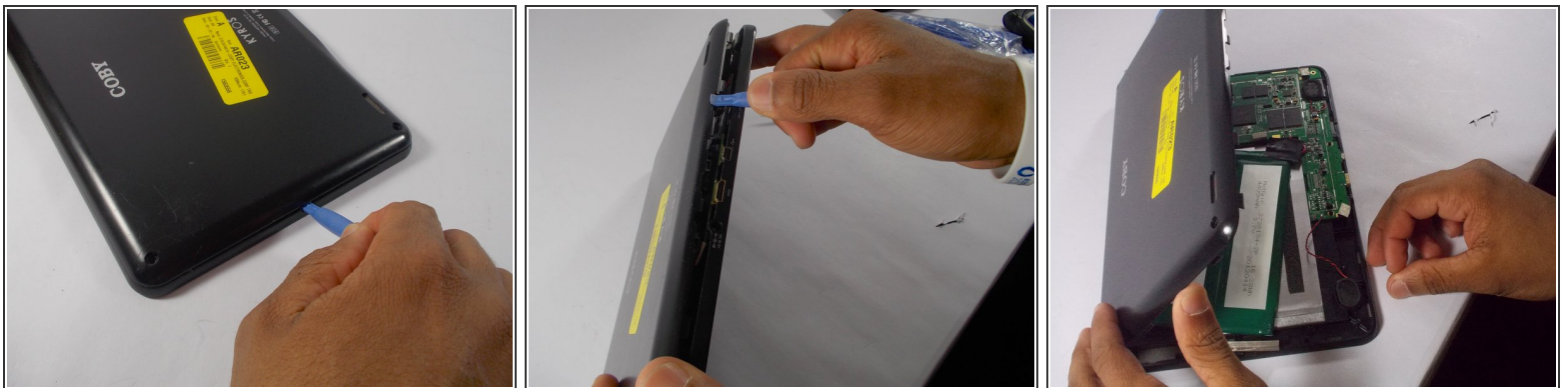
Step 1 — Battery



 Before taking the tablet apart, power off the device.

- Remove anti-slip pads from all 4 corners of the back of the device.
- Use Phillips #0 Precision screwdriver to remove the 4 screws from the back cover. (Screws are about 1/8")

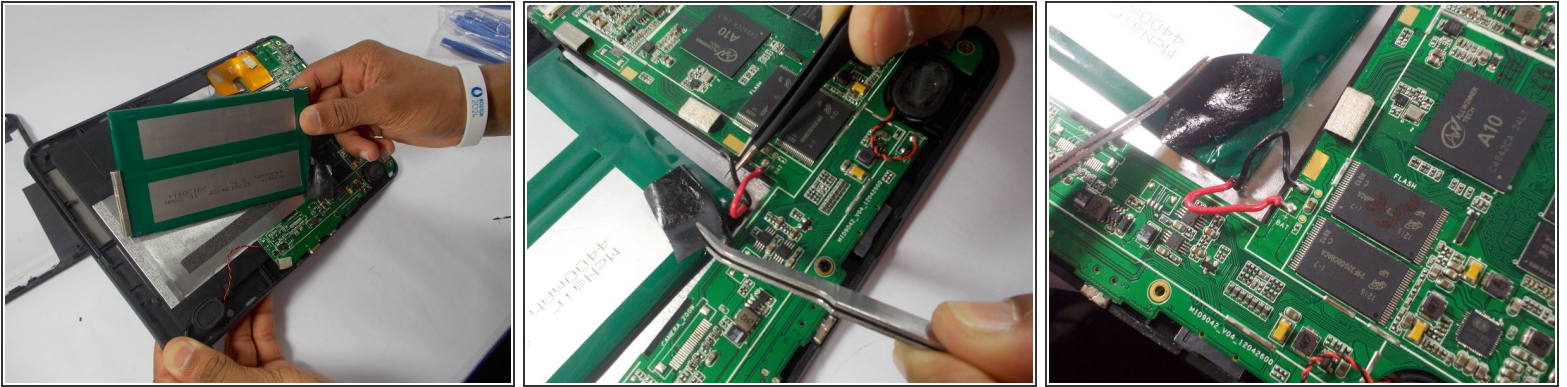
Step 2



 Be careful not to break the inner plastic tabs while pulling the back cover off.

- Use the blue plastic opening tool to wedge the back cover apart from the front.
- Once the edges are wedged apart, use hands to remove the back of the tablet.

Step 3



- Desolder the red and black battery wires from the circuit board.

☑ Red wire connects to positive, black wire connects to negative.

To reassemble your device, follow these instructions in reverse order.