



# ColecoVision Cartridge Reader Replacement

The replacement of the cartridge reader to be able to play games.

Written By: Anastazia Kidder



# INTRODUCTION

The purpose of this guide is to communicate steps on how to replace or repair the cartridge reader on a ColecoVision.



## TOOLS:

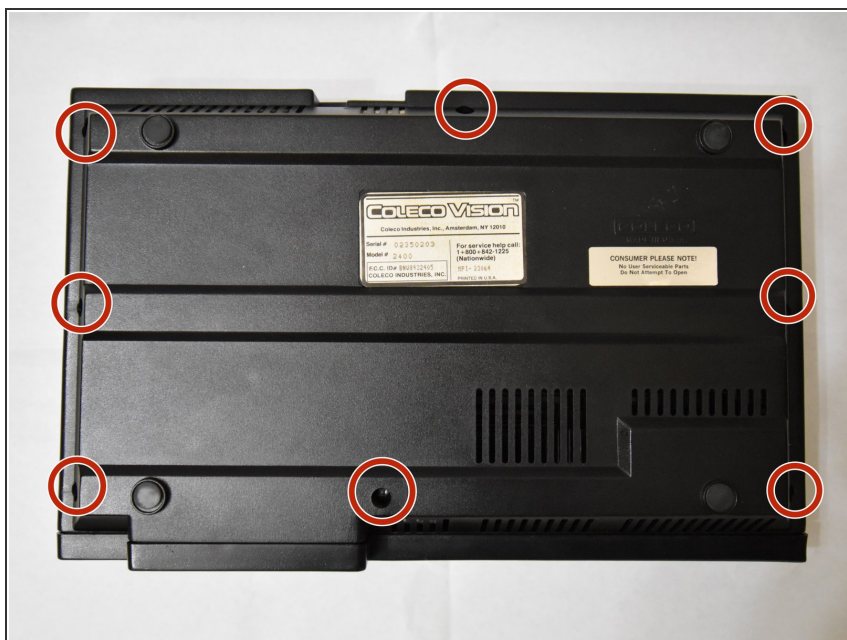
- [Phillips #1 Screwdriver](#) (1)
- [Metal Spudger](#) (1)
- [Spudger](#) (1)
- [Portable Soldering Iron](#) (1)
- [Desoldering Pump](#) (1)



## PARTS:

- [15 Pin Card Edge Connector \(Cartridge Reader\)](#) (1)

## Step 1 — Cartridge Reader



- Flip the console upside down and remove the eight 15mm Phillips #1 screws.

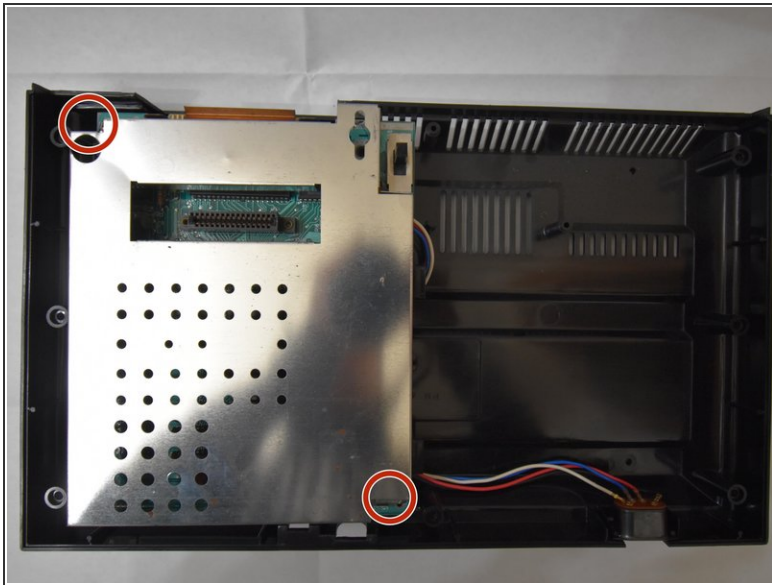
## Step 2



- Use the metal spudger along the bottom rim of the front panel to safely remove the top of the console. Set aside the top.

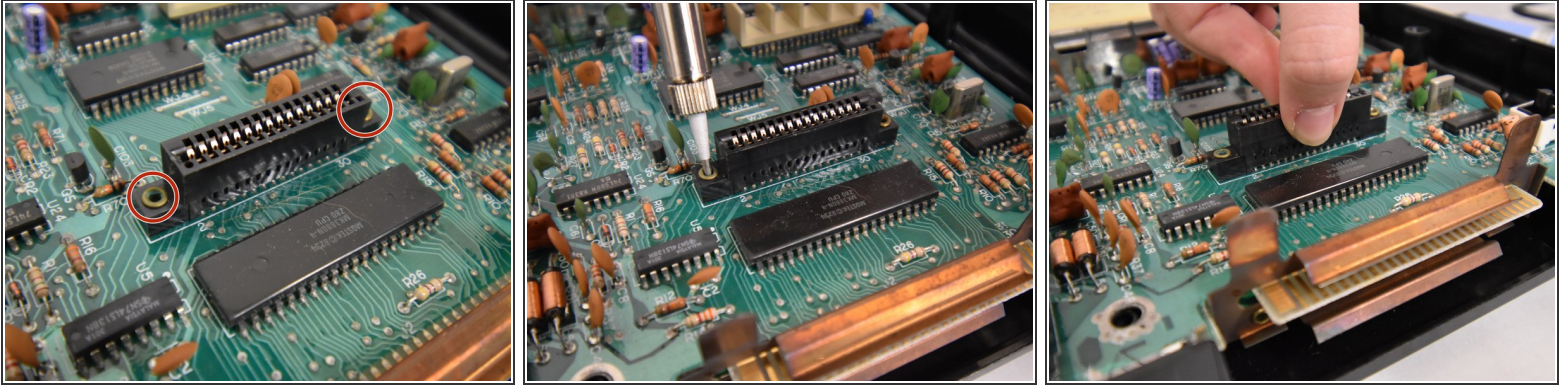


## Step 3



- Remove the two 15mm Phillips #1 screws holding the casing in place.
- Remove the casing to reveal the cartridge reader.

## Step 4



- Desolder the sides of the cartridge reader using the soldering iron and desolder pump.
  - [Refer to this soldering technique guide for reference](#)
  - Patiently wait for the cartridge reader to cool down after being desoldered.
- ⚠ It's very important to remove all the tin from the motherboard and cartridge reader before lifting it from the motherboard. Failure to do so could damage the motherboard.
- Carefully lift up the cartridge reader. A plastic spudger might be helpful in order to easily remove the cartridge reader.

To reassemble your device, follow these instructions in reverse order.