



# ColecoVision Controller Circuit Board Replacement

How to replace a ColecoVision controller circuit board.

Written By: Juin Yeh



---

## INTRODUCTION

The purpose of this guide is to show step-by-step instructions on how to replace the circuit board of a ColecoVision game controller.

---



### TOOLS:

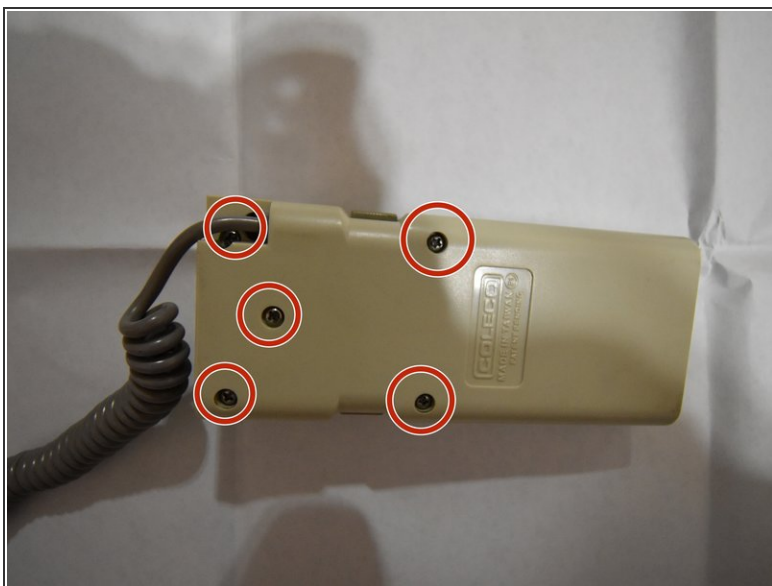
- [Phillips #1 Screwdriver](#) (1)
-

## Step 1 — Controller Circuit Board



- Unplug the controller from the game console.

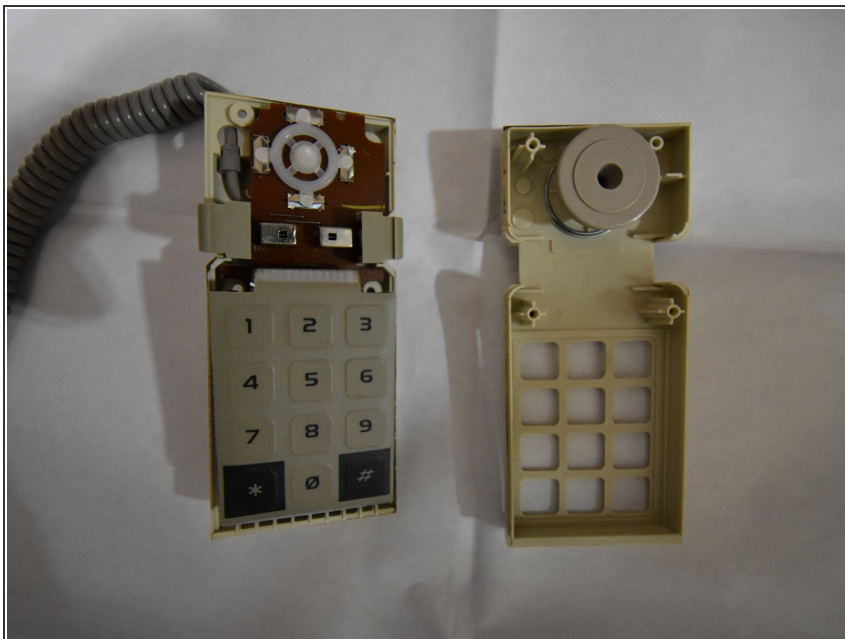
## Step 2



- Place the controller with the back panel up (buttons down).
- Remove the five 15mm screws on the back with a Phillips #1 screwdriver.

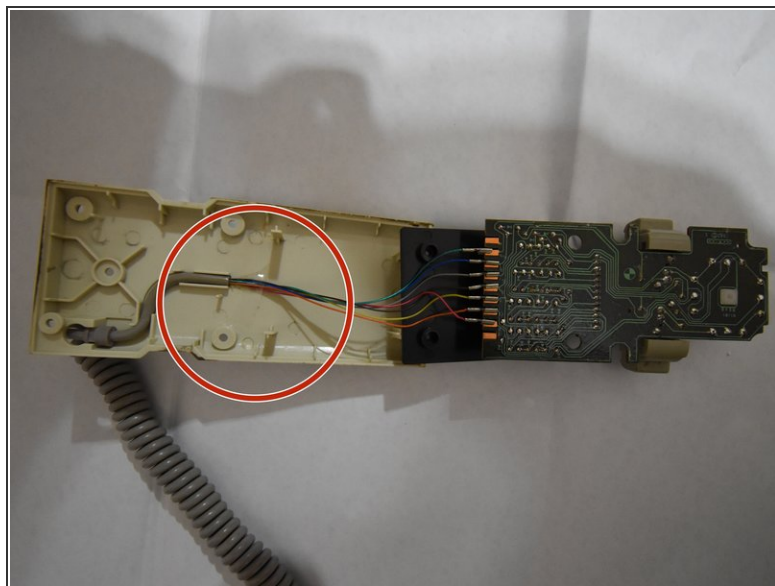
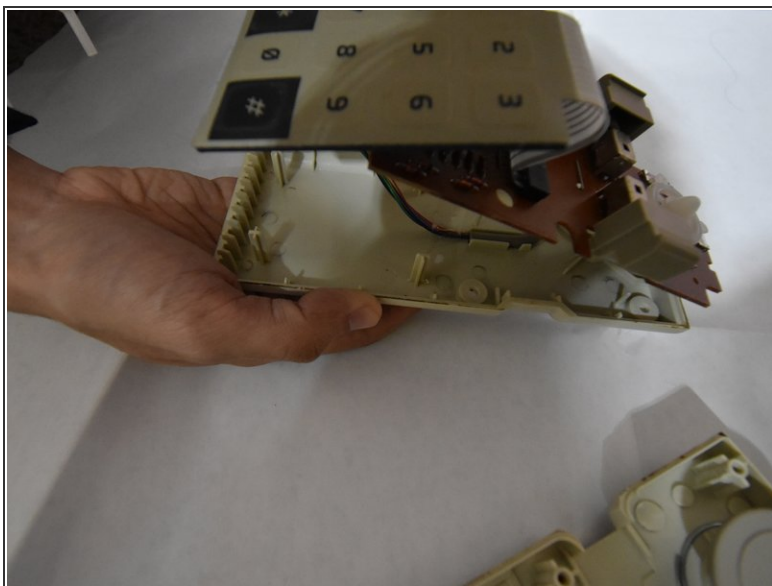


### Step 3



- Turn the device around.
- Separate the front panel from the rest of the controller and set aside.

### Step 4



- Remove the tape and wiring holding the wires in place.
- Carefully lift the circuit board out of the controller.

To reassemble your device, follow these instructions in reverse order.