



Coleman Rechargeable Fluorescent Twin Tube Lantern Power Switch Replacement

How to replace the power switch on Coleman Rechargeable Fluorescent Twin Tube Lantern.

Written By: Mathew Merrick



INTRODUCTION

Is your switch unable to move due to a foreign liquid? Does the switch feel like its seated improperly? Check out this guide on removing and replacing the switch.



TOOLS:

- [Phillips #0 Screwdriver](#) (1)
- [Phillips #1 Screwdriver](#) (1)



PARTS:

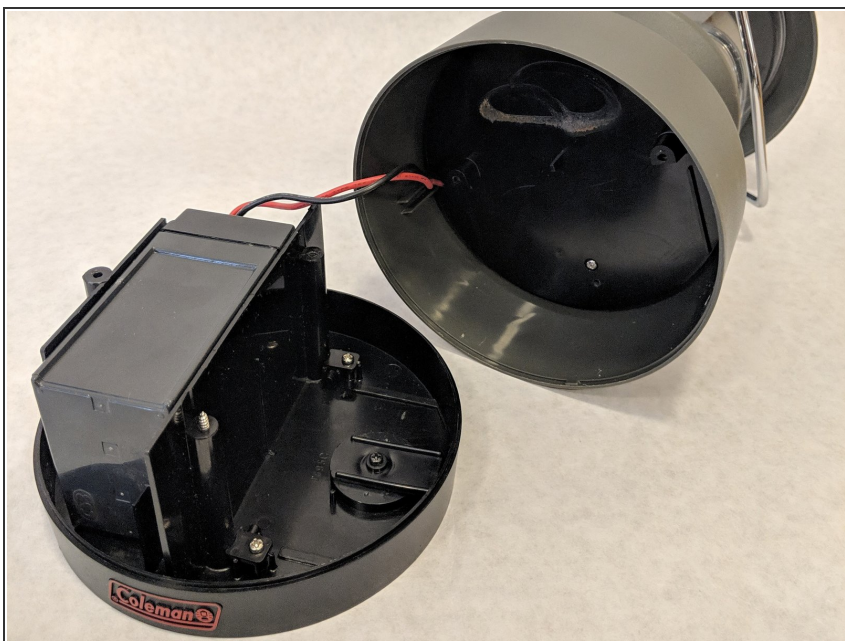
- [Battery 5342-1001](#) (2)

Step 1 — Battery



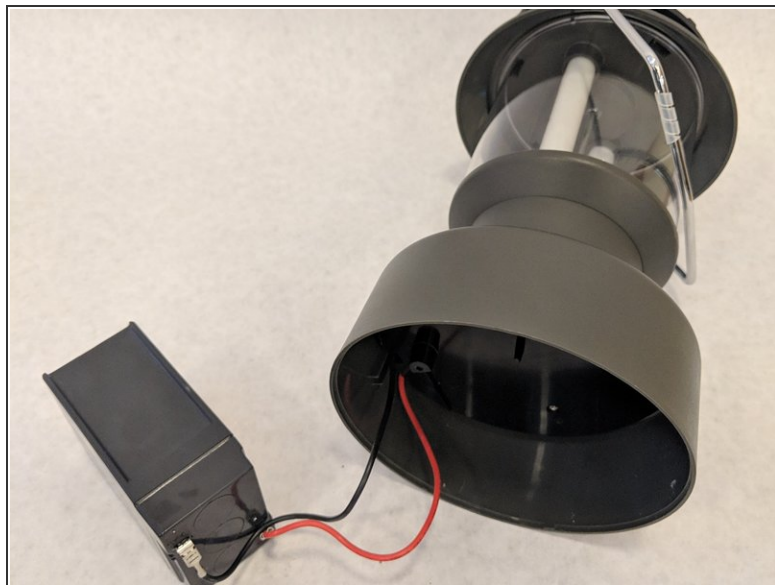
- Carefully turn the lantern upside down.
- Remove the three 1.2 mm Phillips #0 screws from the base of the lantern.

Step 2



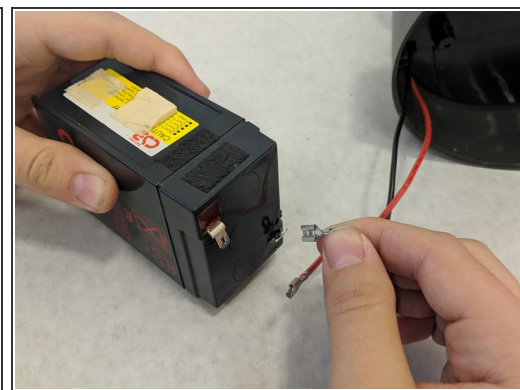
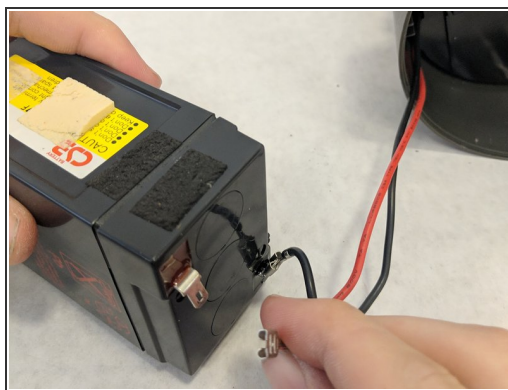
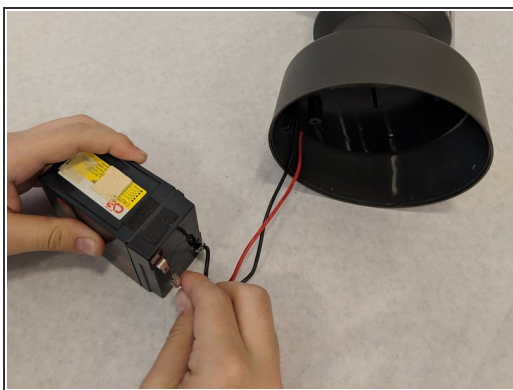
- Carefully pull the bottom of the lantern to remove the base from the device.

Step 3



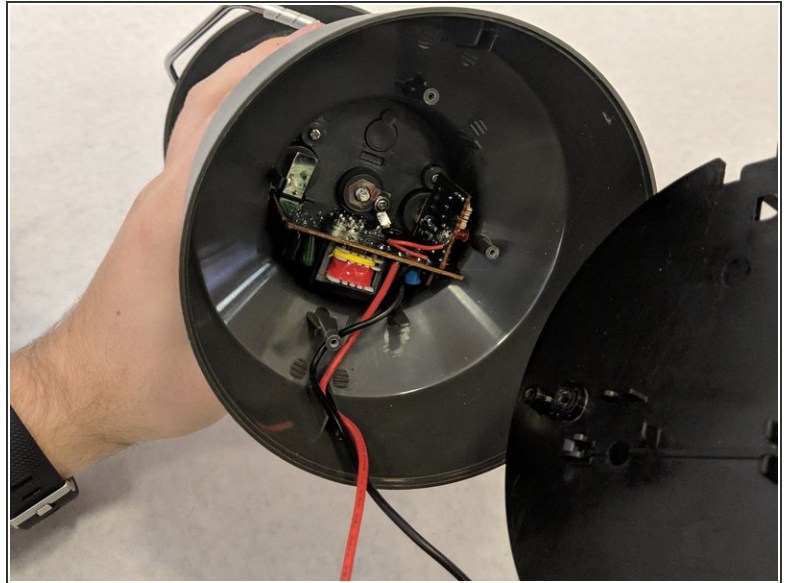
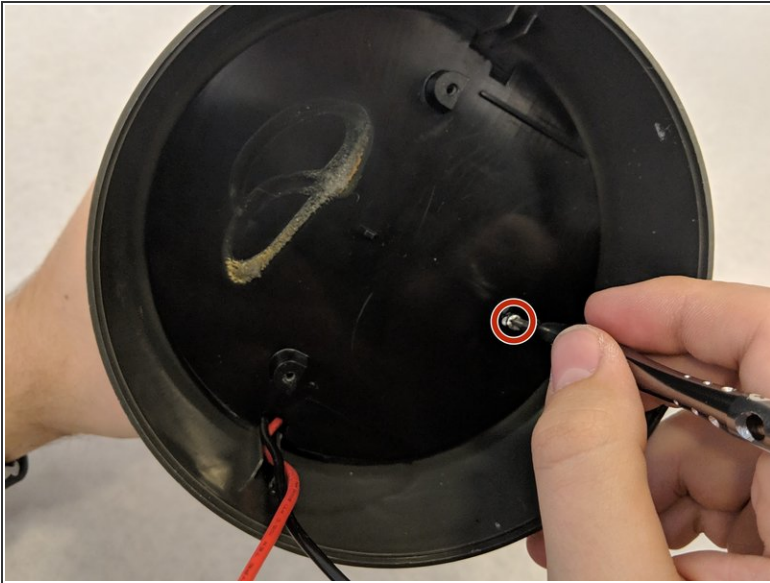
- Gently pull the battery out of the slot and away from the base.
- ⓘ The battery may be held into place by adhesive strips.

Step 4



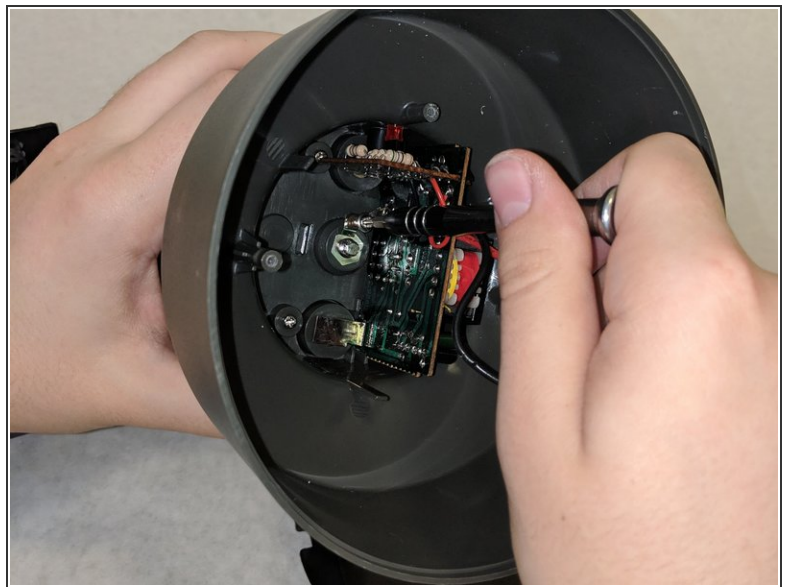
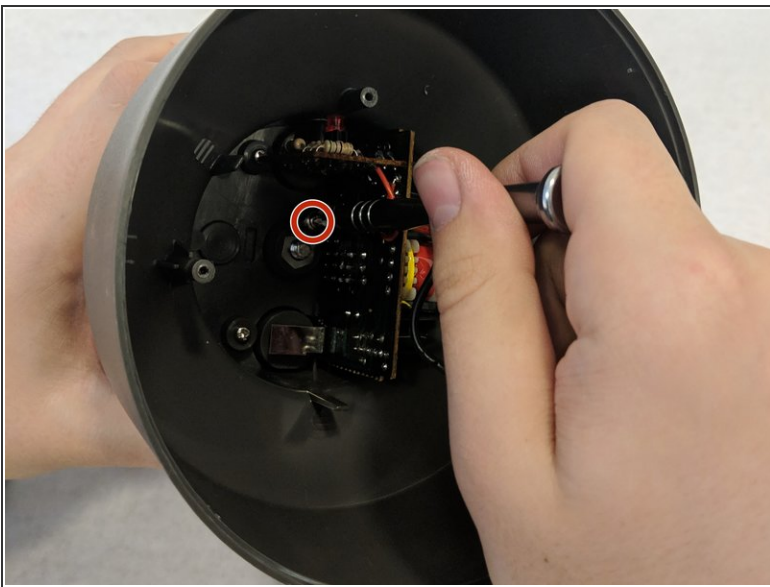
- Carefully detach the negative wire from the battery terminal first.
- Next, detach the positive wire from the battery terminal.

Step 5 — Main Power Board



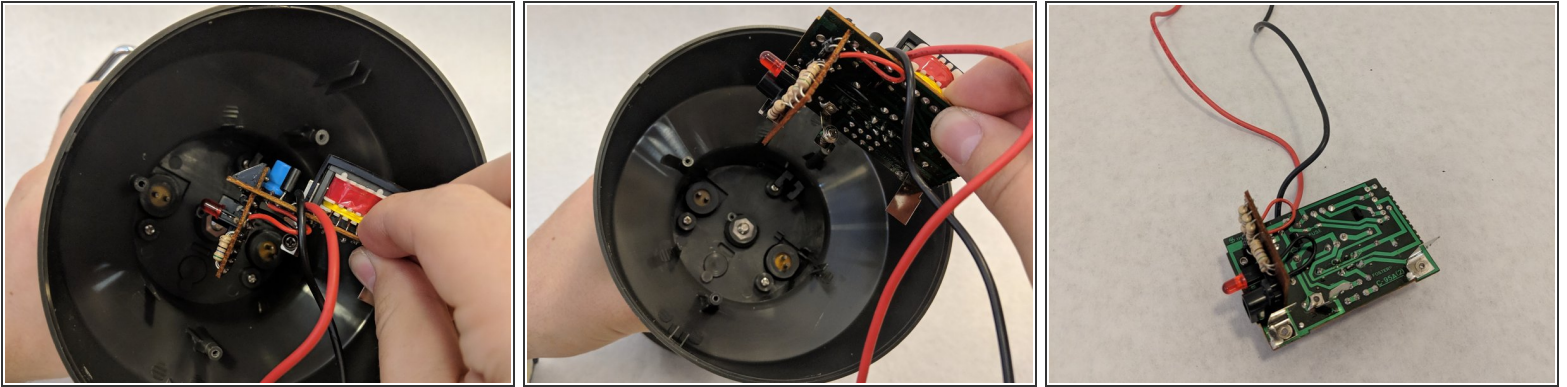
- Remove the single 1.2 mm Phillips #1 screw on the bottom of the lantern.
- Remove the plastic barrier.

Step 6



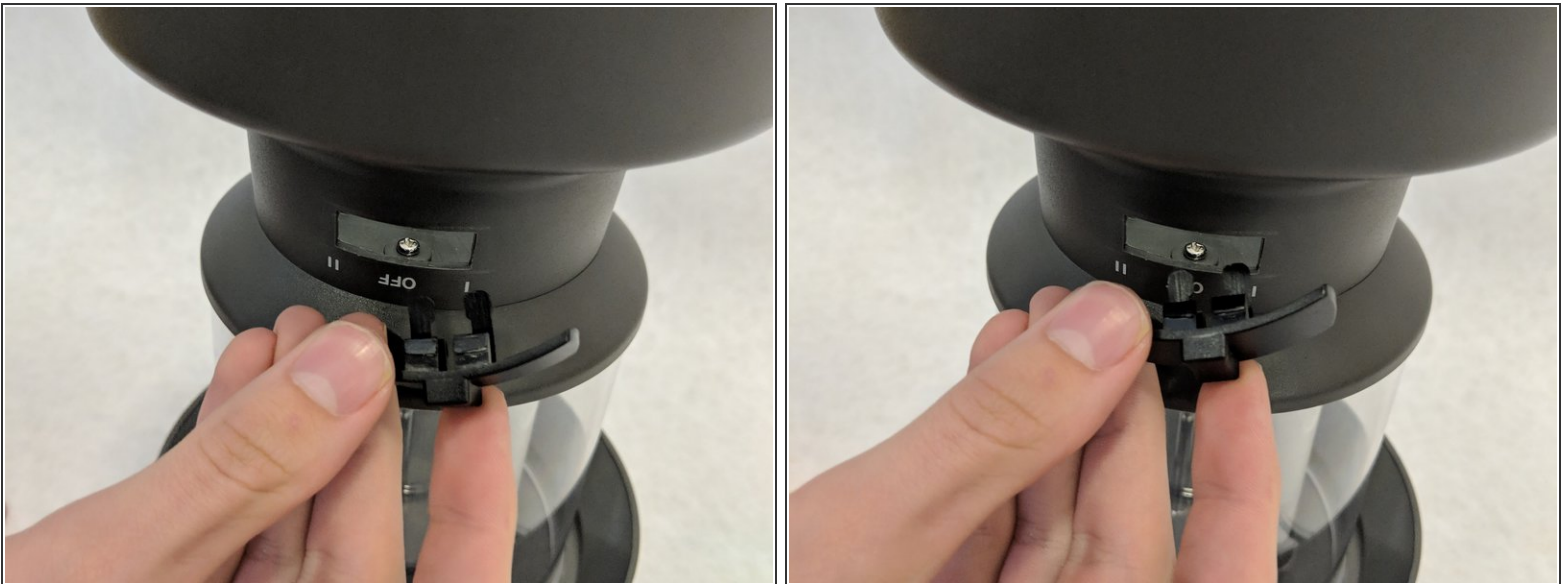
- Unscrew the single 1.2 mm Phillips #1 screw holding the motherboard to the plastic lantern housing.

Step 7




- Gently grab the main board by the exposed PCB.
- Pull the main board straight out of the housing.

Step 8 — Lantern Power Switch



- Remove the switch by pushing down on the ends while simultaneously pulling it out of the slot.

 When removing the switch, make sure to depress the inner clips when removing from the device. Be careful, do not force the switch from the base of the lantern.

To reassemble your device, follow these instructions in reverse order.