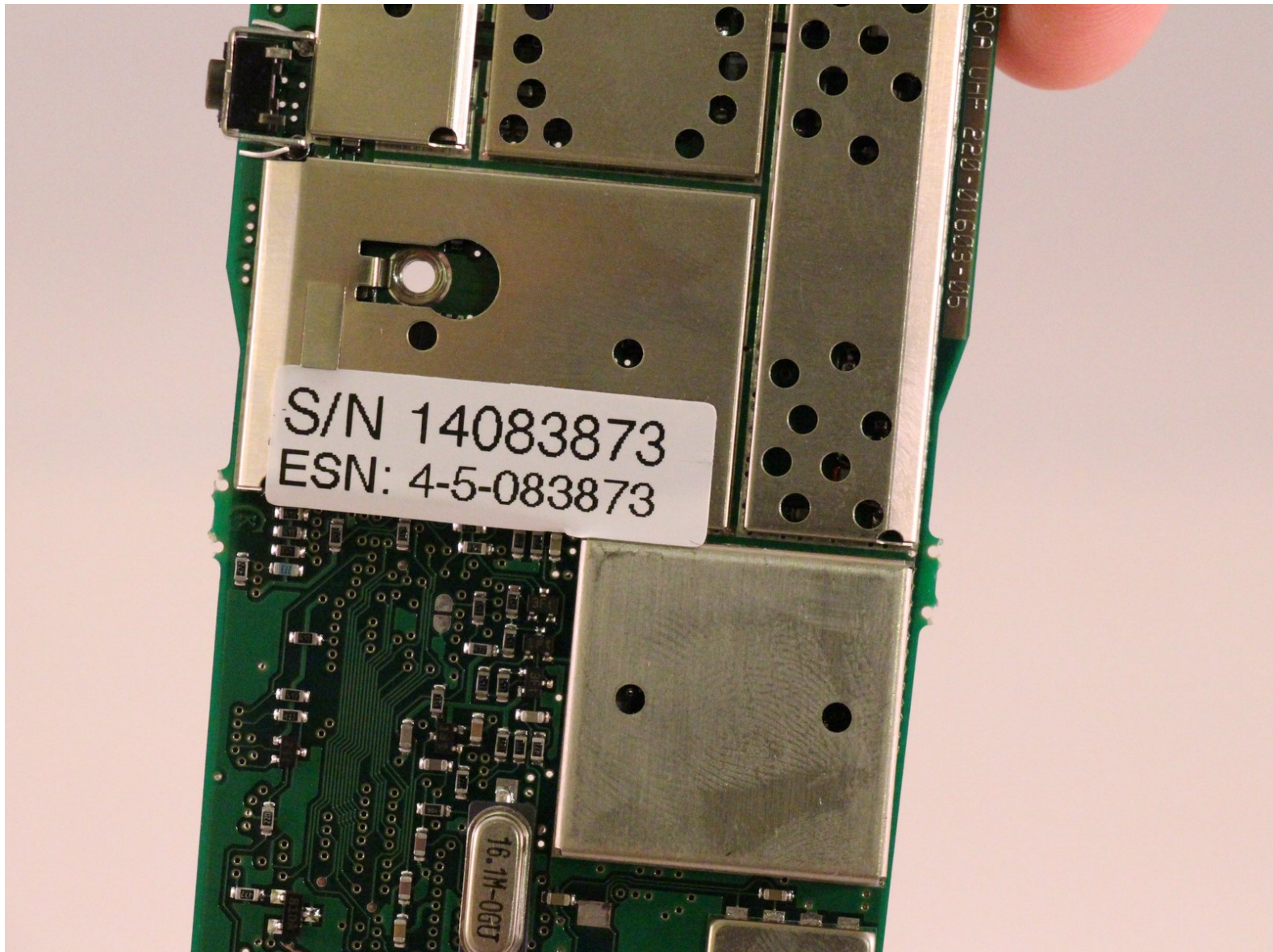




# ComNet Ericsson Panther 600P Motherboard Replacement

This guide will show you how to access the motherboard of the ComNet Ericsson Panther 600P radio.

Written By: Tim Moreau



## INTRODUCTION

If your device has received water damage or experienced a similarly devastating event, the motherboard may have become damaged or even destroyed.

This guide will take you through the necessary steps to access and replace the motherboard.



### TOOLS:

- [T15 Torx Screwdriver](#) (1)
  - [Small Needle Nose Pliers](#) (1)
  - [iFixit Opening Tools](#) (1)
-

## Step 1 — Locate the release button.



- Look for the release button on the back of the radio.
- Press the button and pull down on the battery at the same time. The battery will come free.

## Step 2 — Antenna



- Twist the antenna counter-clockwise to unscrew it from the antenna jack.



## Step 3 — Dials



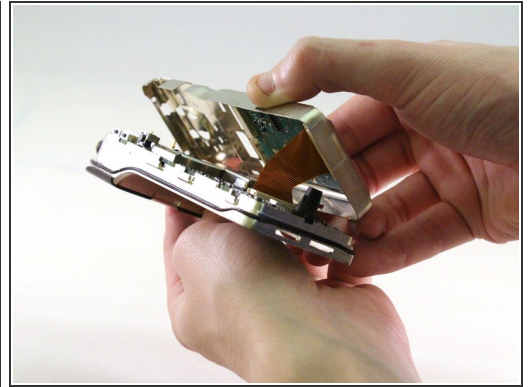
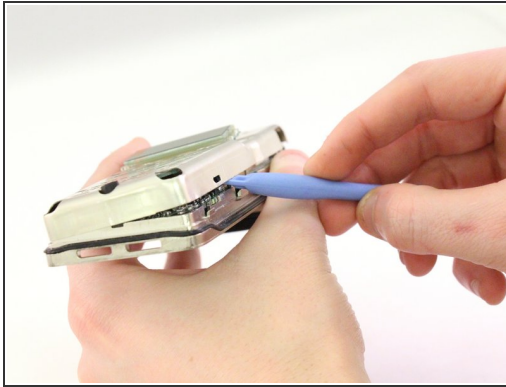
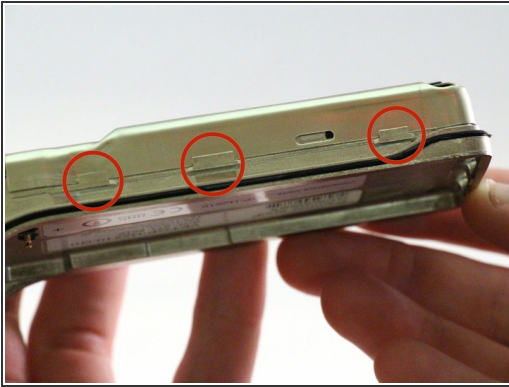
- Pull up on the dials to remove them from the underlying pegs.

## Step 4 — Exterior Case



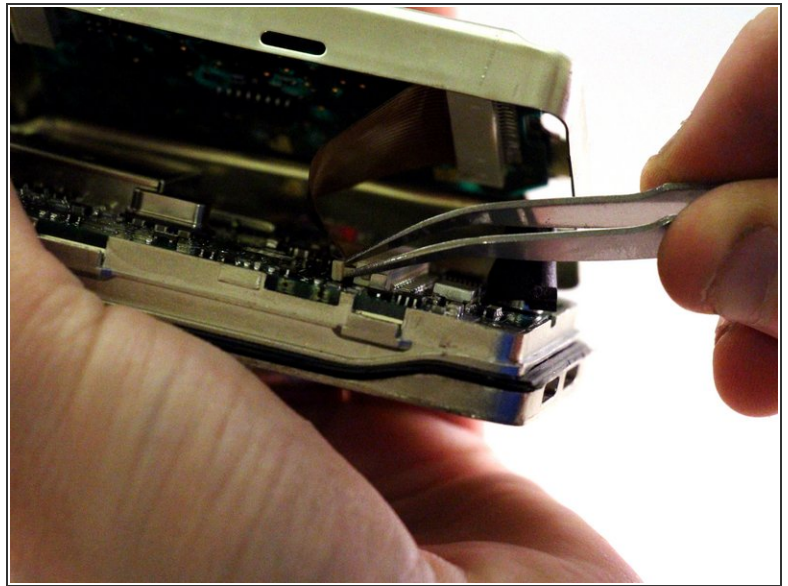
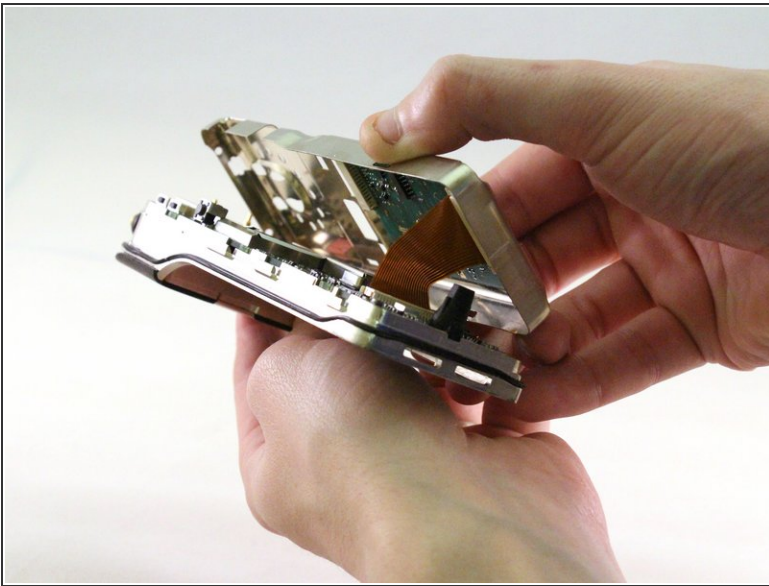
- Using a T15 Torx screwdriver, unscrew the two screws.
- Using a plastic opening tool, pry the internal case from the external case.

## Step 5 — Front Case - Internal



- Using the plastic opening tool, pry the case apart.

## Step 6 — Ribbon



- ⓘ The keypad chip is attached to the motherboard by a ribbon.
- Pull ribbon with tweezers to detach from back panel.



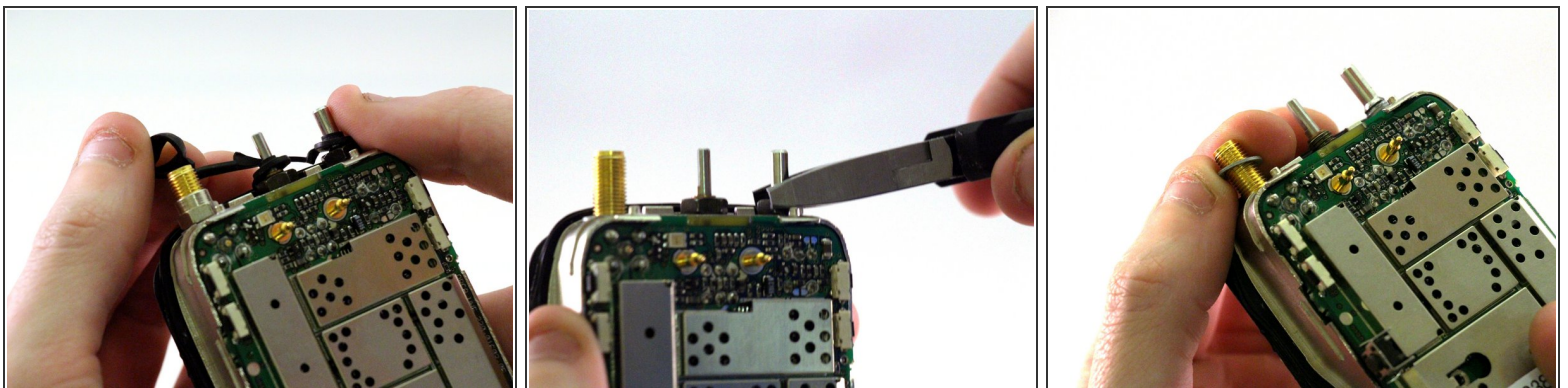
## Step 7 — Screen




 Screen will be attached by a ribbon.

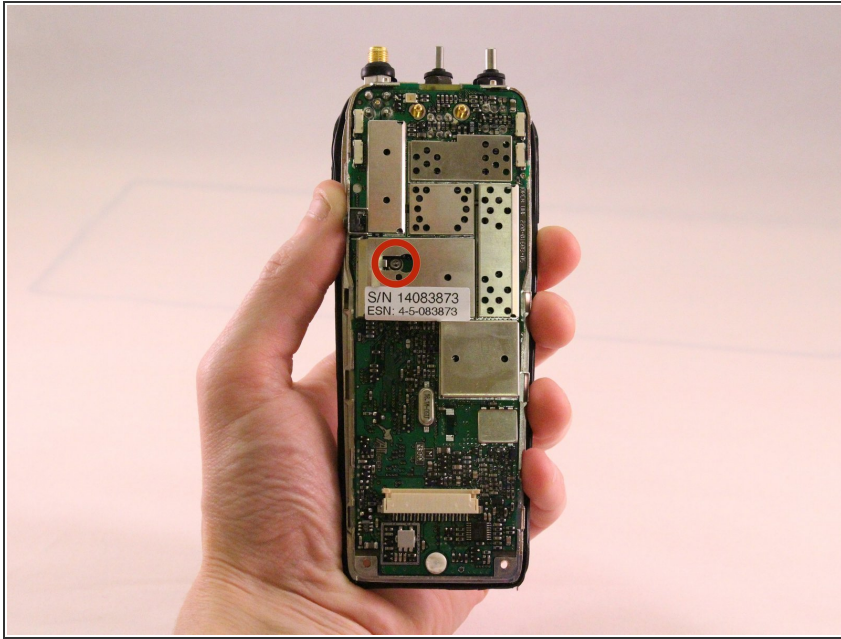
- Pull screen up and away from motherboard to detach.

## Step 8 — Antenna, Volume, Channel Nuts



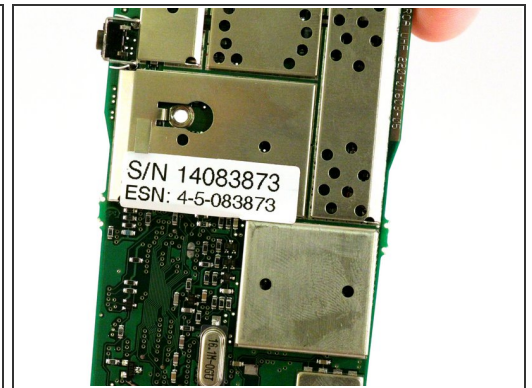
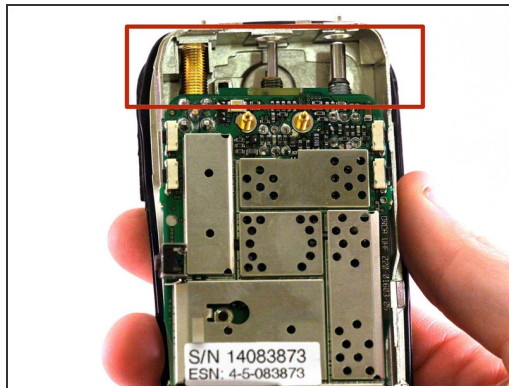
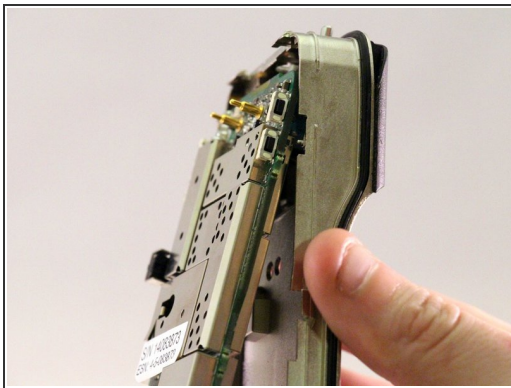
- Remove the rubber O-rings from the antenna jack, volume switch, and channel switch.
  - Once the rubber O-rings have been removed, use small needle nose pliers to unscrew the nuts on the antenna jack, volume switch, and channel switch.
-  There are washers underneath the nuts on the antenna jack, volume switch, and channel switch. Set these washers aside.

## Step 9



- Using a T15 Torx screwdriver, unscrew the 3.8mm screw from the case.

## Step 10 — Internal Case - Back



- Using any convenient hand-placement, pull the motherboard away from the case.
- The antenna jack, volume dial, and channel dial are attached to the motherboard. Be sure to pull the motherboard downward so they clear their respective slots in the case.
- Lift the motherboard completely free of the case.

To reassemble your device, follow these instructions in reverse order.