



# Comfort Zone CZ6C Clamp Replacement

Replace the clamp of your Comfort Zone CZ6C so your desk fan can securely attach onto surfaces.

Written By: Samantha Galicinao



## INTRODUCTION

If your Comfort Zone CZ6C loosely attaches onto surfaces, then this simple, two-step guide will help you replace the clamp.



### TOOLS:

- [Phillips #0 Screwdriver](#) (1)



### PARTS:

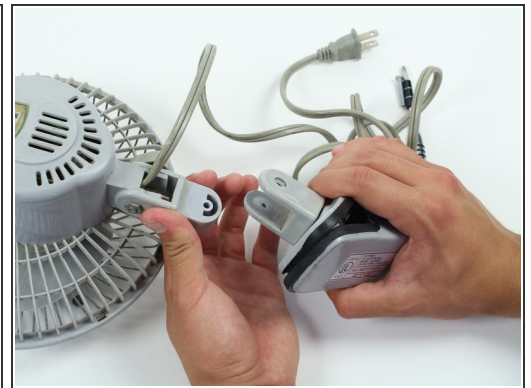
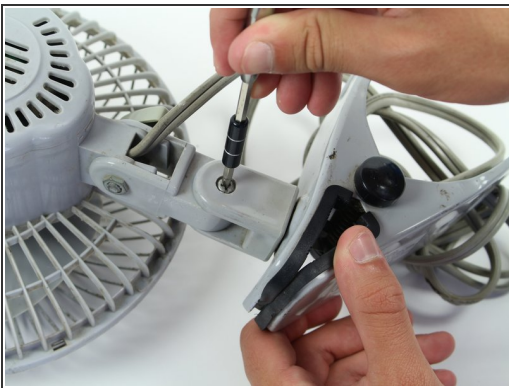
- [Replacement Clamp](#) (1)

## Step 1 — Clamp



- Turn the Comfort Zone CZ6C onto its backside.
- Locate the center hinge screw.

## Step 2



- With a Philips screwdriver, remove the center hinge screw.
- Once the center hinge screw is completely removed from its hole, detach the clamp from the Comfort Zone CZ6C.

To reassemble your device, follow these instructions in reverse order.