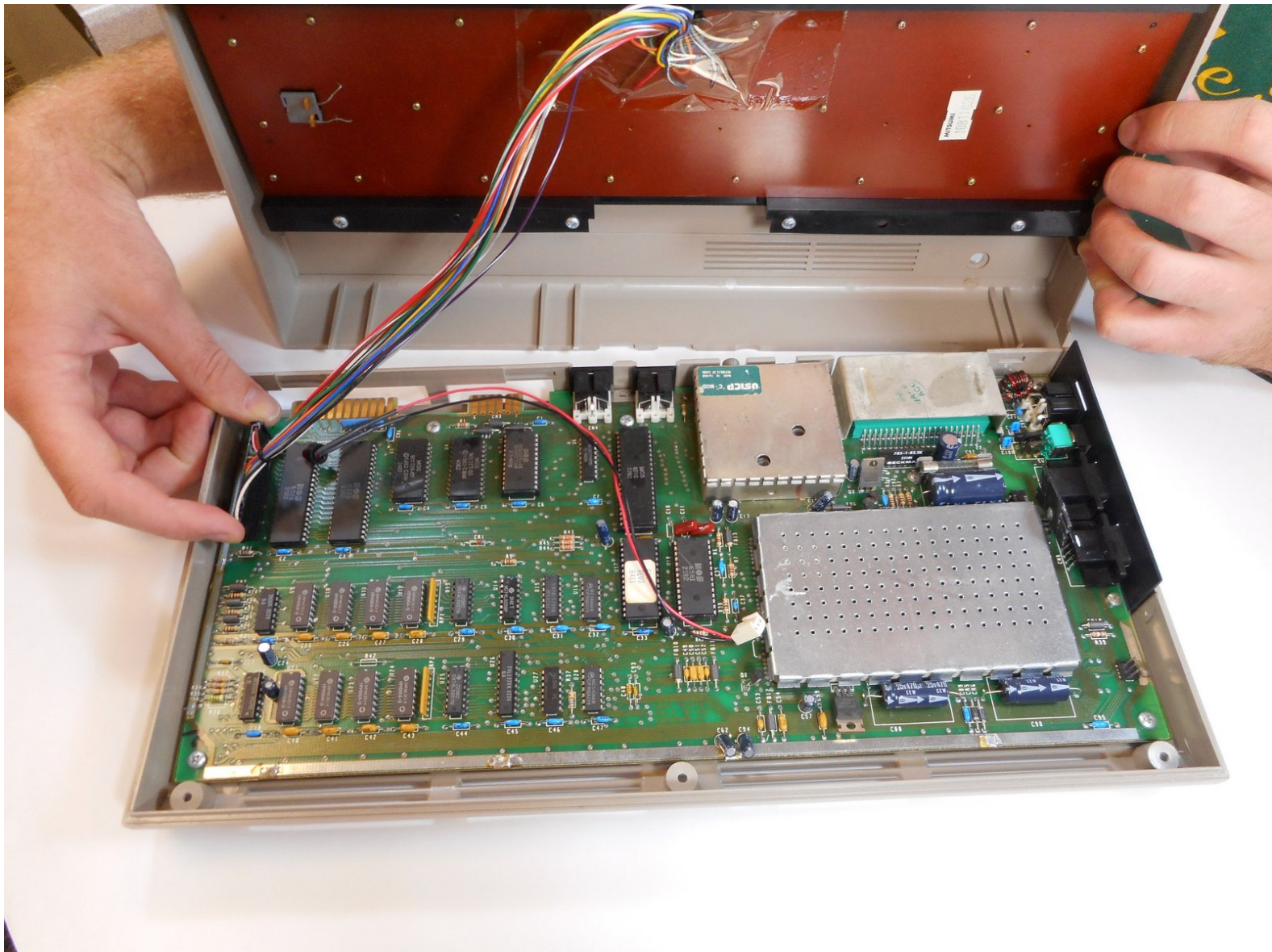




Commodore 64 3AG fuse Replacement

Removing and Replacing the 3AG fuse

Written By: Silvanus Clarke



INTRODUCTION

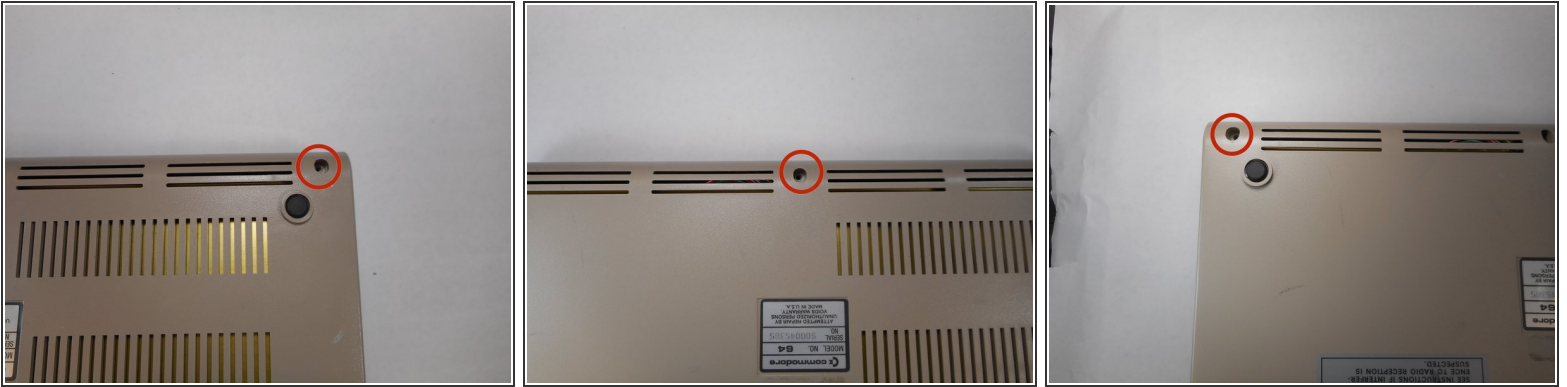
A 3AG fuse is a glass - bodied fuse designed to break an electric circuit if the current exceeds safety levels in a Commodore 64 device



TOOLS:

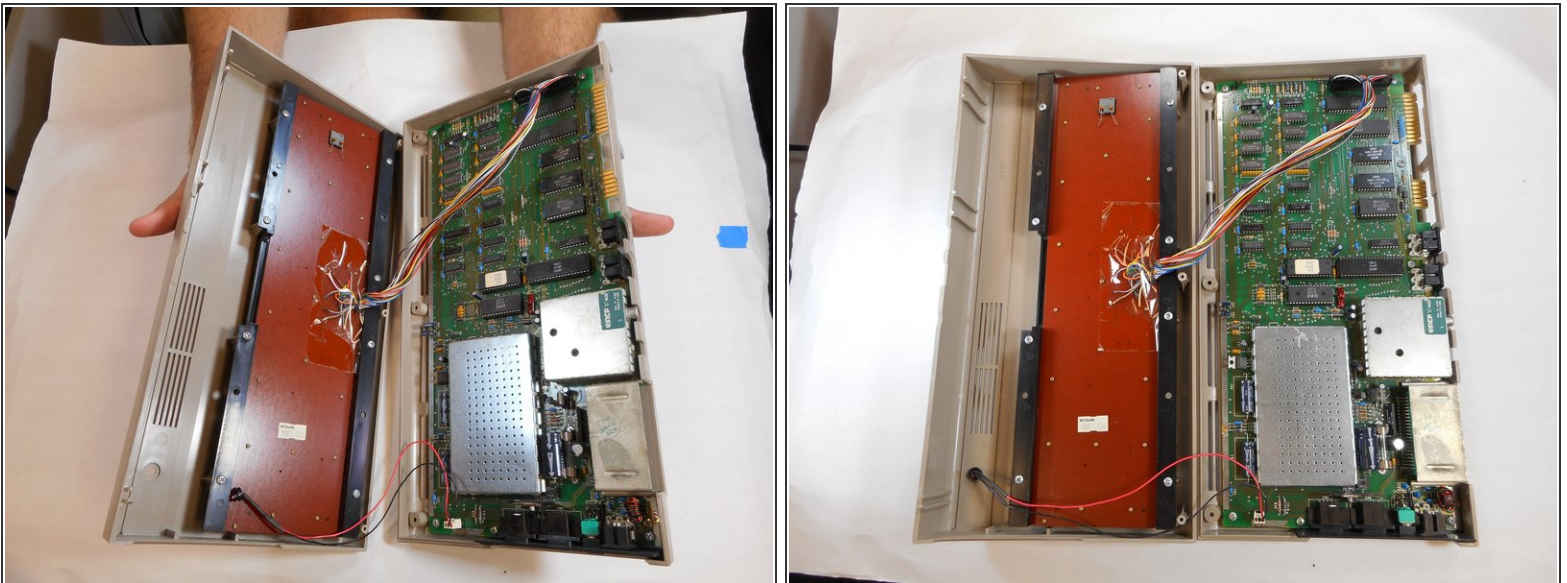
- [Phillips #00 Screwdriver](#) (1)
 - [Spudger](#) (1)
-

Step 1 — Removing screws



- 1. Remove three 6.75mm ph2 screw heads from the casing

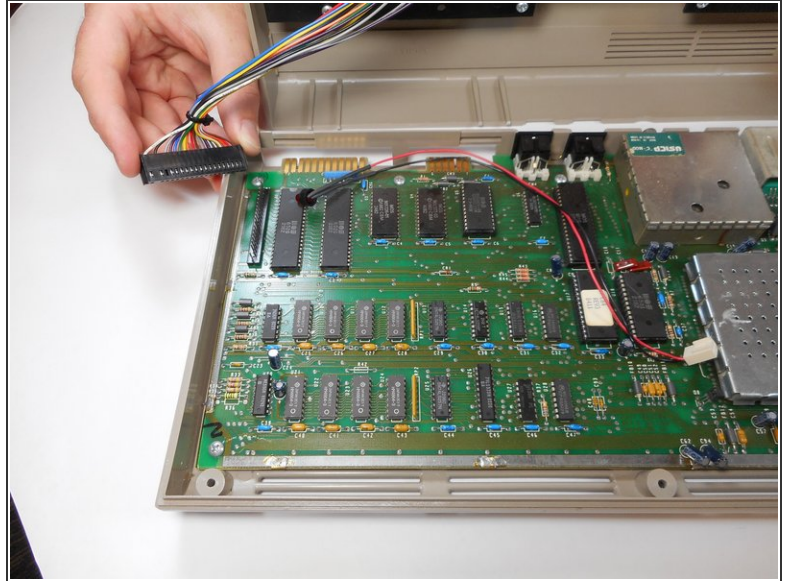
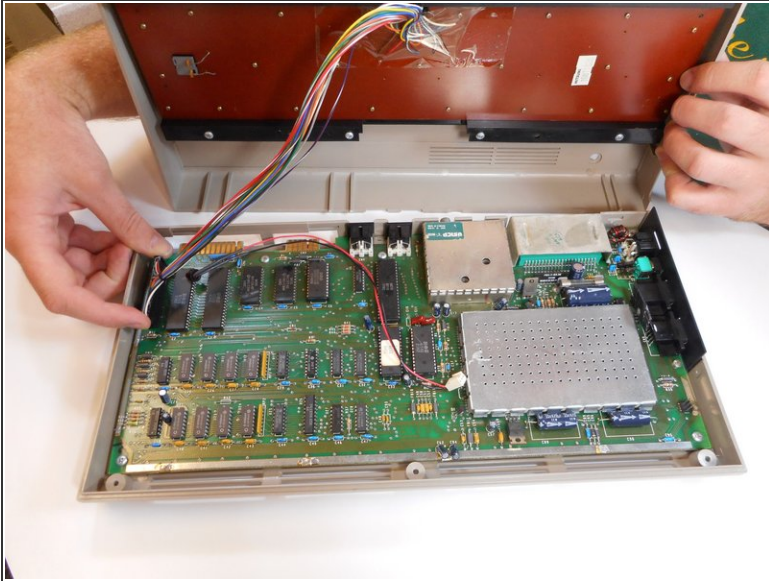
Step 2 — Opening



- 2. Split the case of the C64 open by pulling up on the case towards you

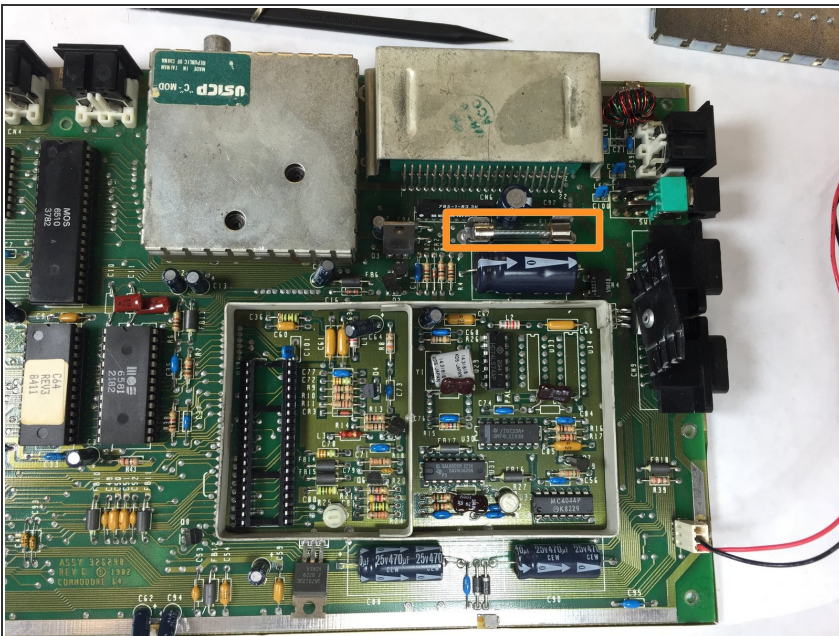
⚠ Do not pull too hard that you break the clips.

Step 3 — Detach Keyboard from motherboard



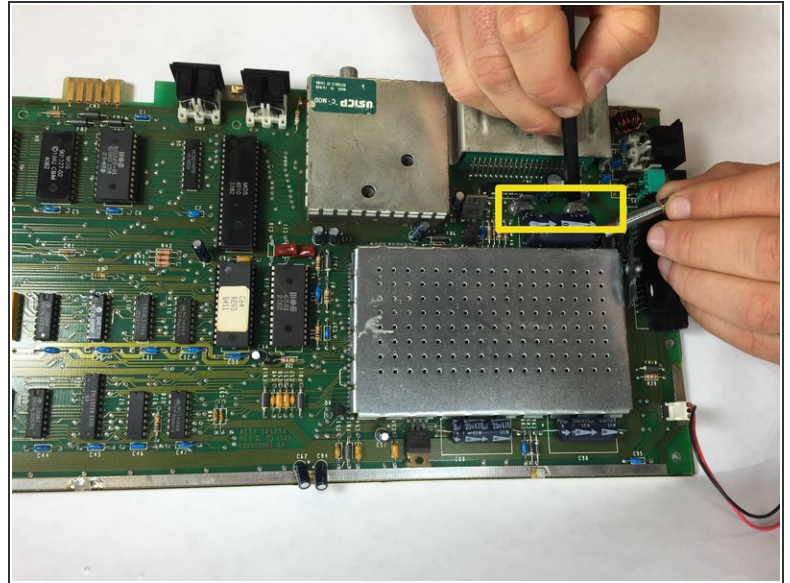
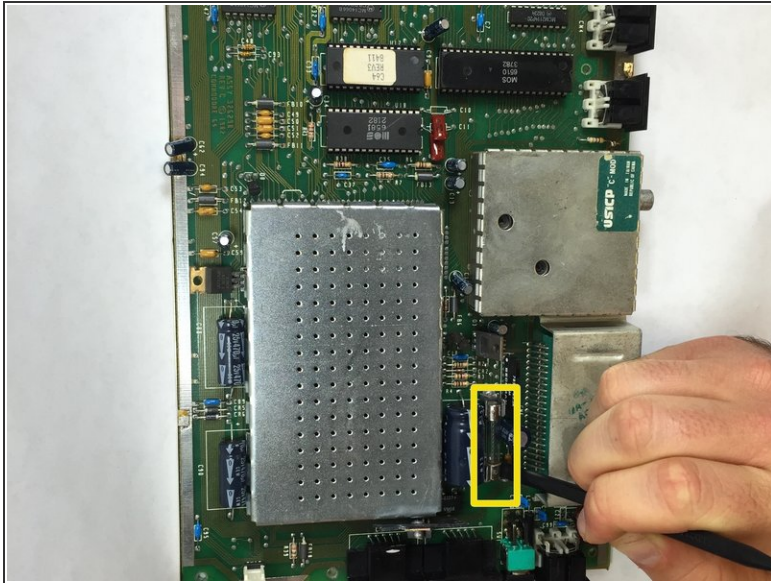
- 1. Detach the multi-colored wire bundles that's connected to the motherboard
- i** In this picture, the power indication LED (connected to the black and red wires) is not fastened to the keyboard panel, yours might be different.

Step 4 — Locate 3AG fuse



- 2. Find the 3AG fuse located next to the joystick ports and On/Off switch

Step 5 — Removing the 3AG fuse



- 3. Using the iFixit splugger, prop out the 3AG fuse from the clip.

i * Replace the 3AG fuse by inserting the new fuse and letting it pop into the clip

To reassemble your device, follow these instructions in reverse order.