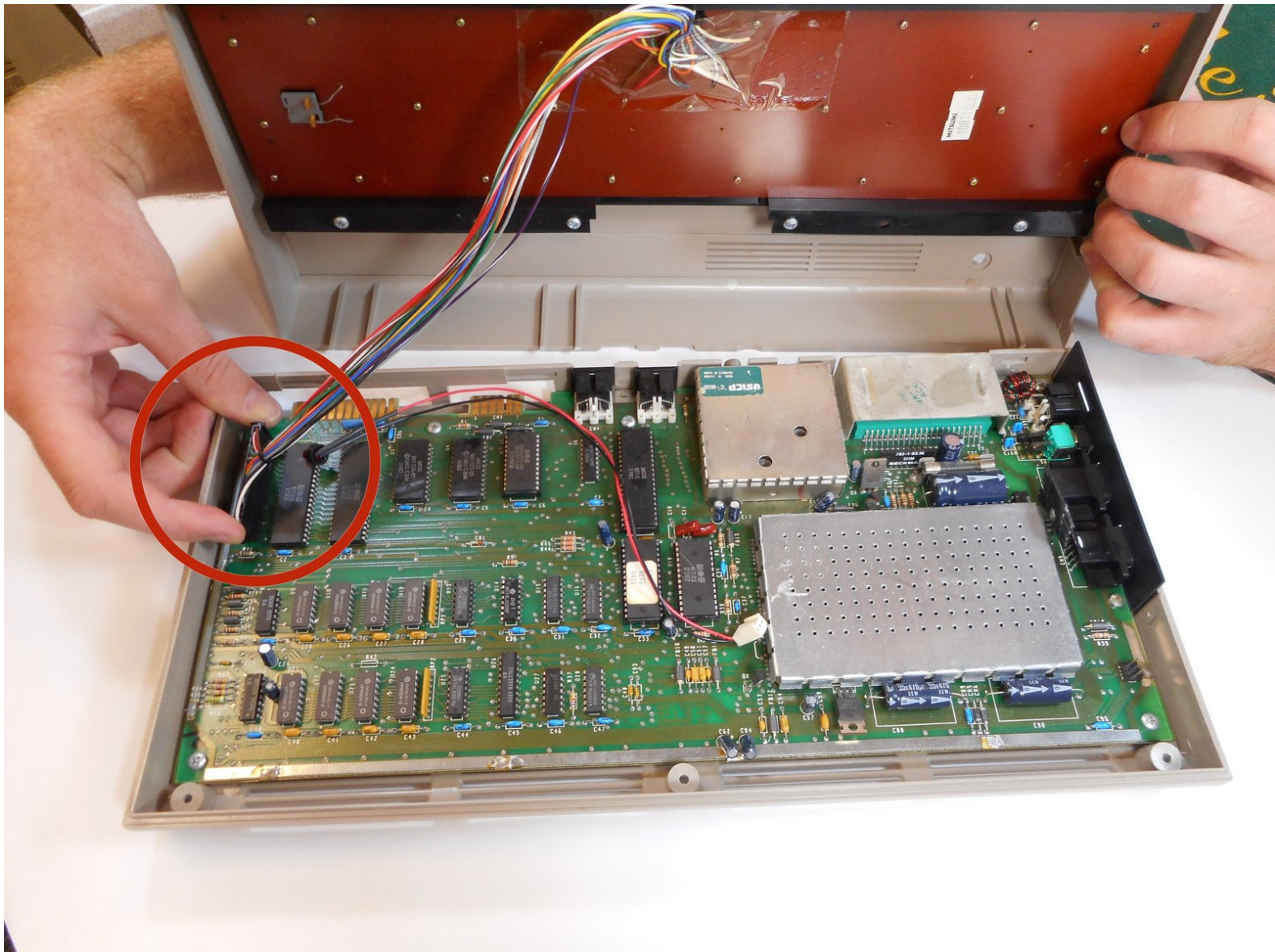




# Commodore 64 Central Processing Unit (CPU) Replacement

Removing the Central Processing Unit (CPU)

Written By: Silvanus Clarke



---

## INTRODUCTION

The Central Processing Unit (CPU) or Micro Processing Unit (MPU) is the 8-bit processor for the Commodore 64.

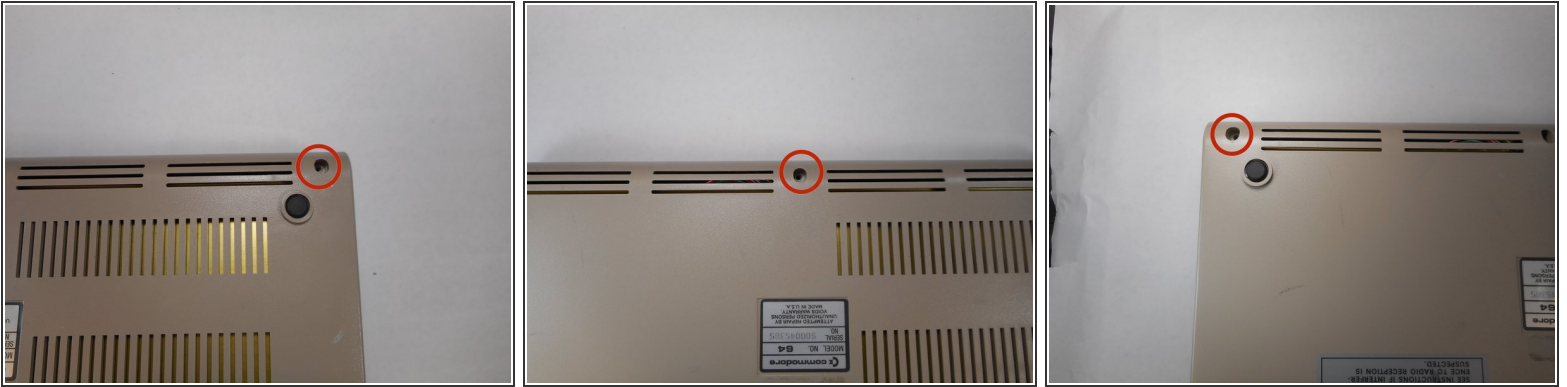
---



### TOOLS:

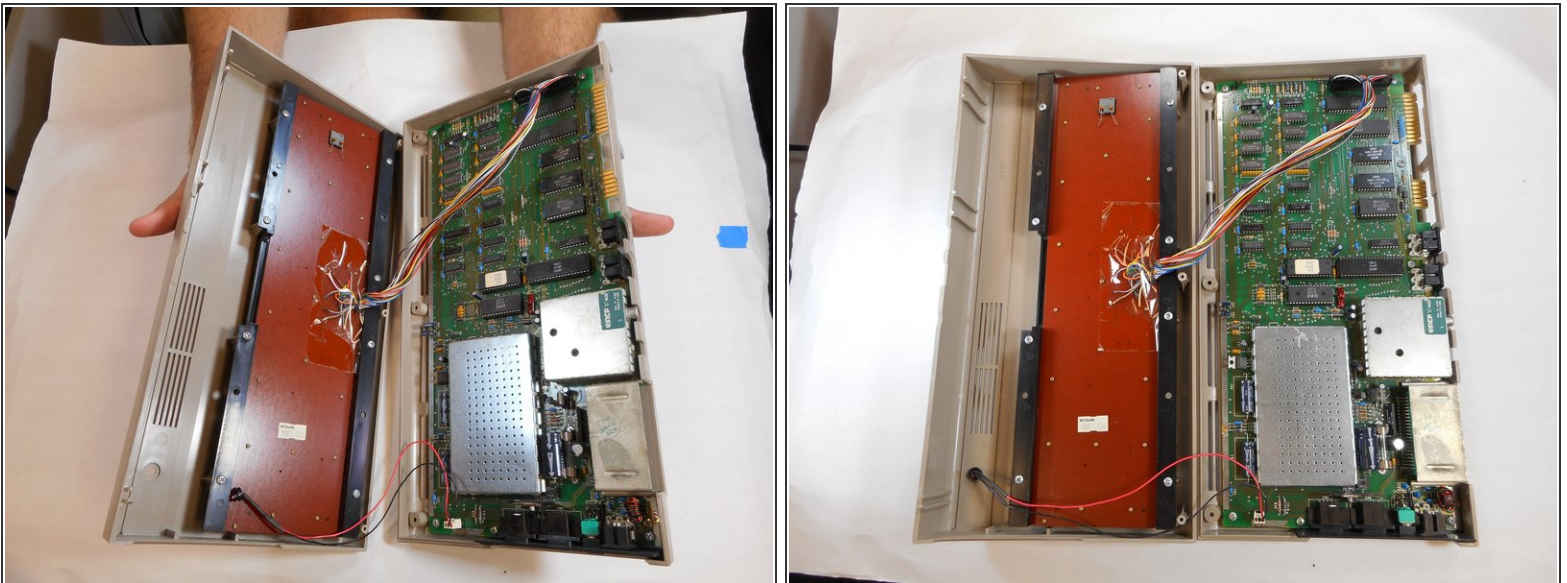
- [Phillips #00 Screwdriver](#) (1)
  - [Utility Scissors](#) (1)
-

## Step 1 — Removing screws



- 1. Remove three 6.75mm ph2 screw heads from the casing

## Step 2 — Opening

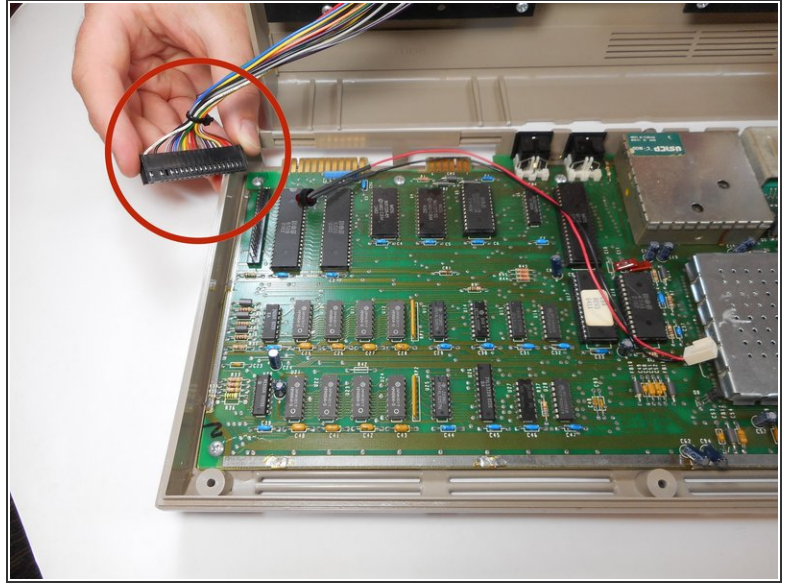
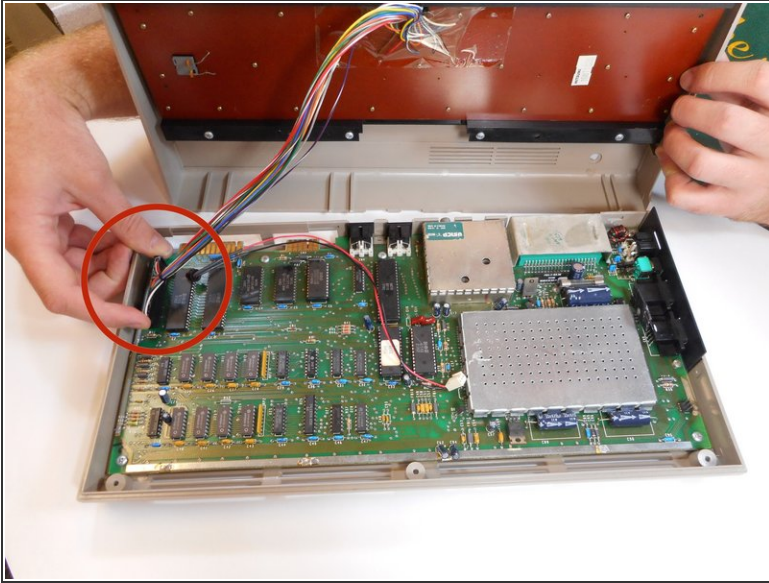


- 2. Split the case of the C64 open by pulling up on the case towards you

⚠ Do not pull too hard that you break the clips.

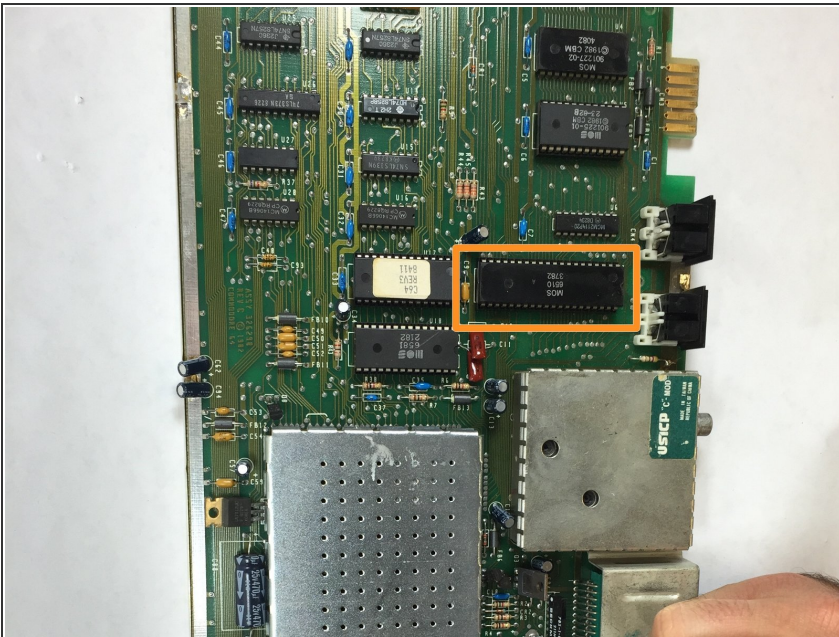


### Step 3 — Detach Keyboard from the motherboard



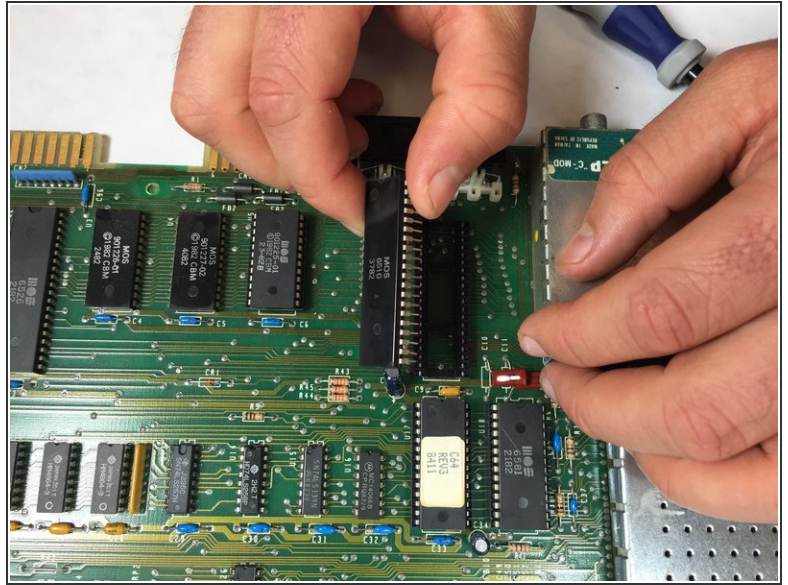
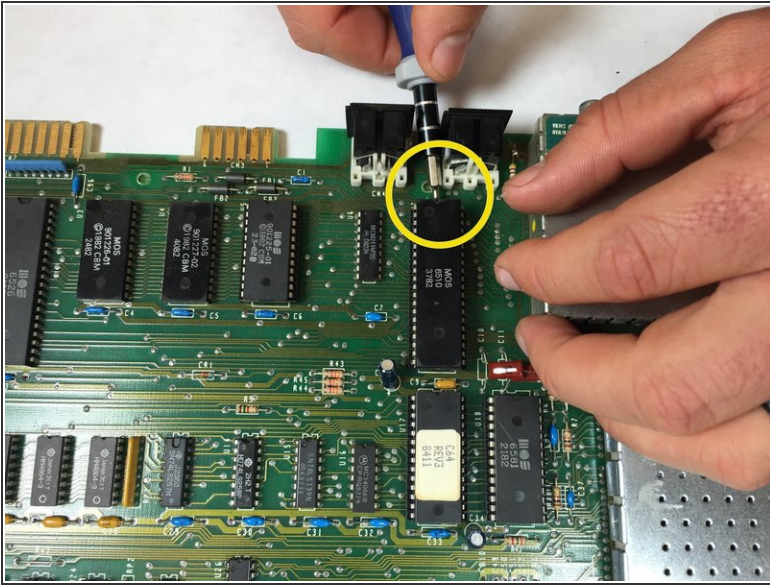
- 1. Detach the multi-colored wire bundles connected to the motherboard.

### Step 4 — Locate the CPU



- Locate the CPU chip which is labeled 'MOS 6510 3782'

## Step 5 — Removing the CPU chip



- 3. Loosen the CPU chip with a Phillips screwdriver. Then use your hand to pry up the CPU chip from the motherboard.

To reassemble your device, follow these instructions in reverse order.