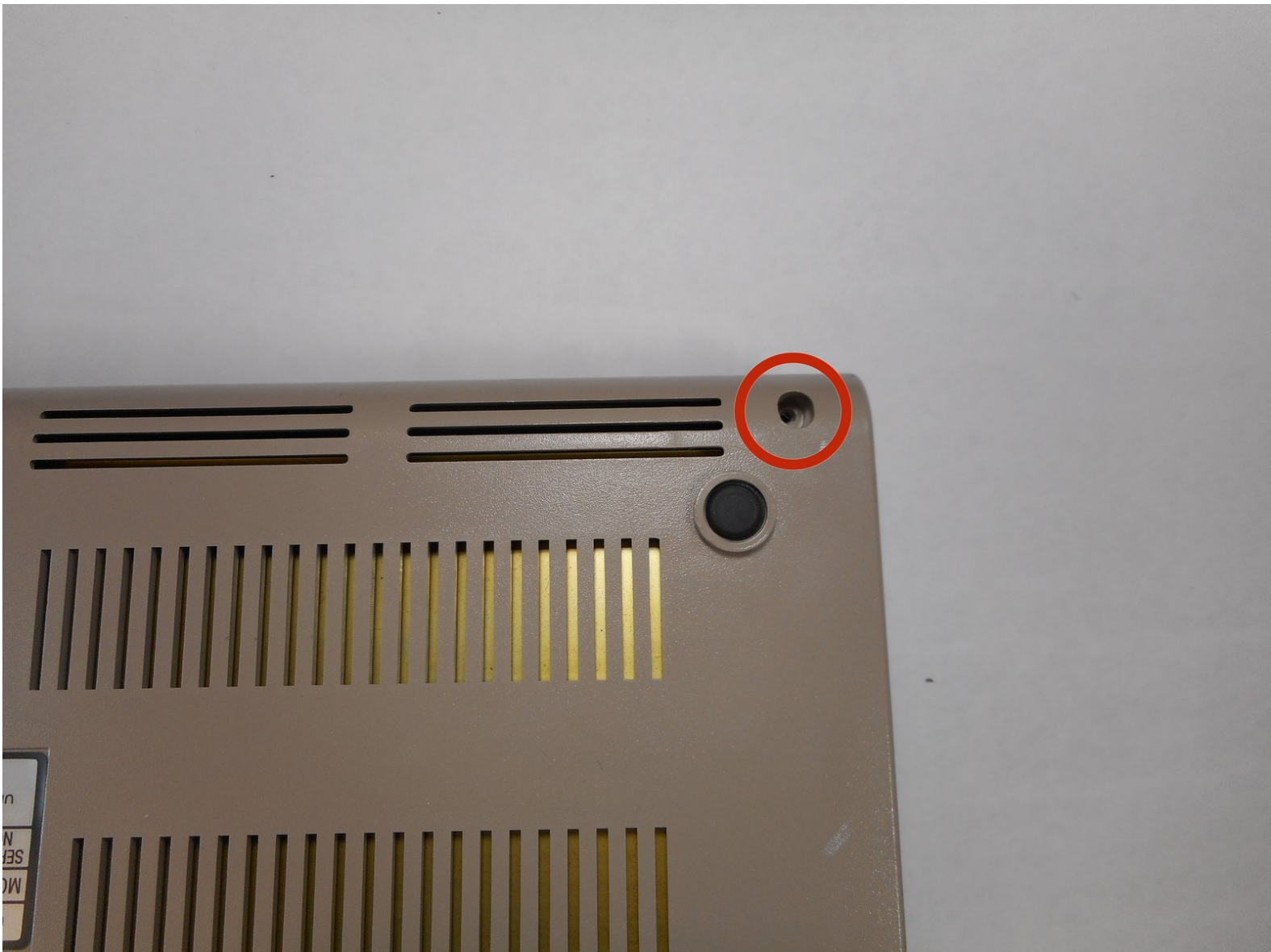




Commodore 64 Removing the Shift-Lock Key

Procedure for Commodore 64- Removing the Shift-Lock Key

Written By: Silvanus Clarke



INTRODUCTION

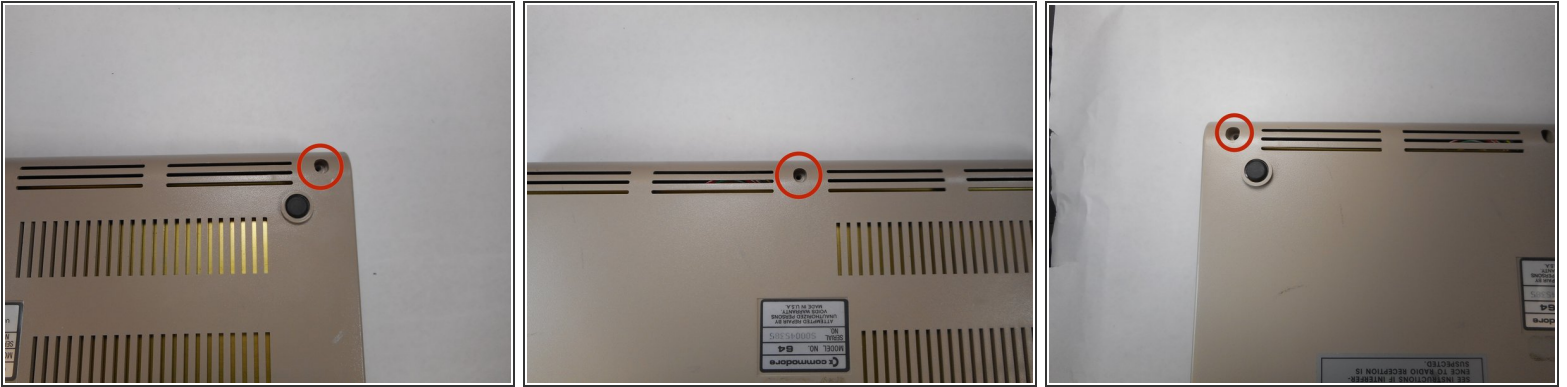
The Commodore 64, also known as the C64, C-64, C=64, or occasionally CBM 64 or VIC-64, is an 8-bit home computer introduced in January 1982 by Commodore International.



TOOLS:

- [Phillips #00 Screwdriver](#) (1)
 - [Utility Scissors](#) (1)
-

Step 1 — Removing the screws



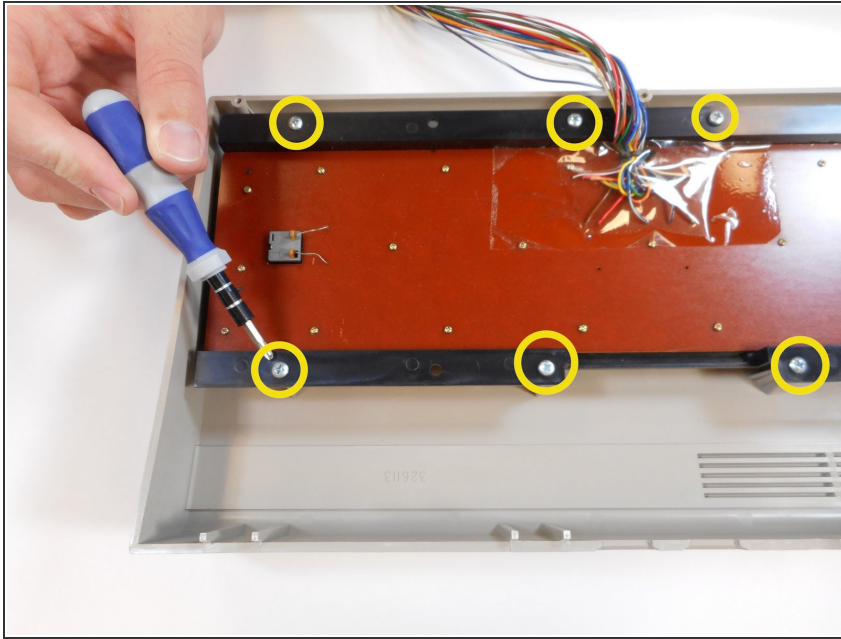
- 1. Remove three 6.75mm ph2 screw heads from the casing.

Step 2 — Opening the Case



- 2. Split the case of the C64 open by pulling up on the case towards you
- ⚠ Do not pull too hard that you break the clips.

Step 3 — Removing screws (continued)



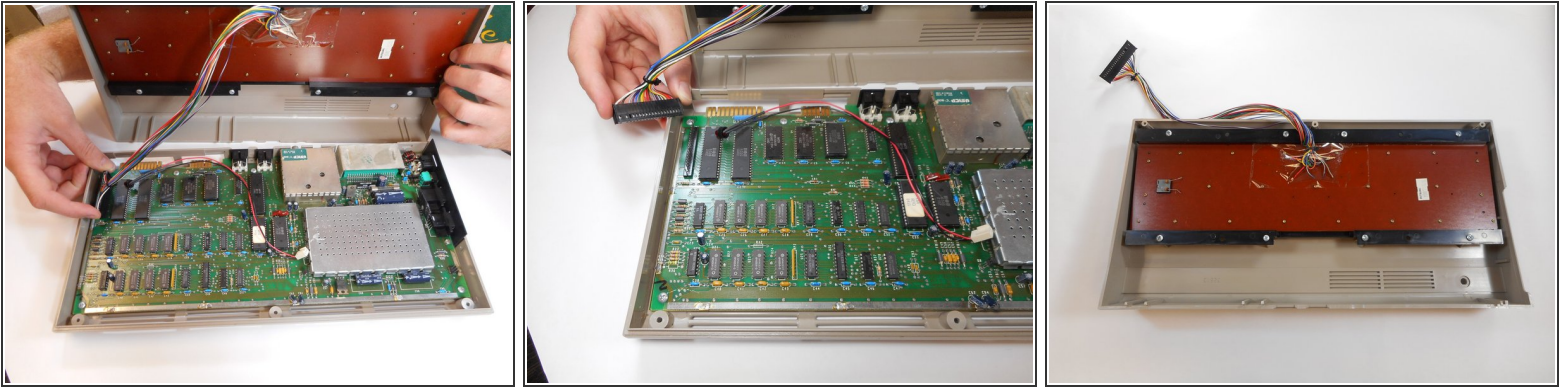
- 3. Remove eight 6.75 mm ph2 screw heads to detach the keyboard face from the front casing. (Two remaining screws on the right side.)

Step 4 — Removing Screws (continued)



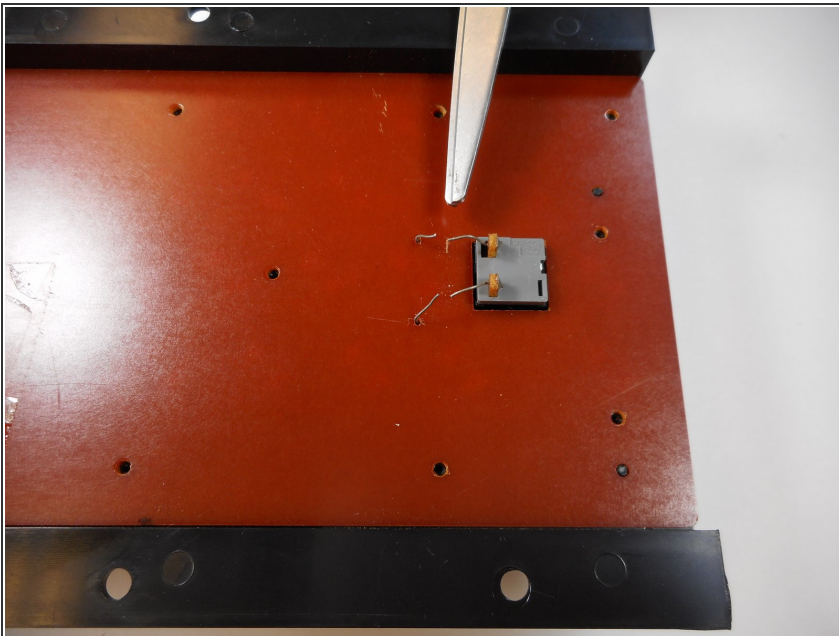
- 4. Remove twenty-three 3.38 mm ph2 screw heads from the back of the keyboard facing

Step 5 — Removing the keyboard bundle cords from the motherboard



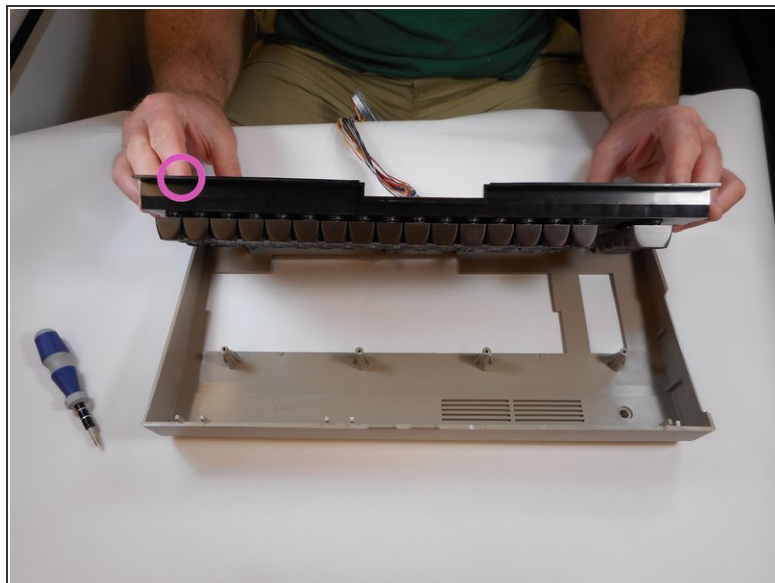
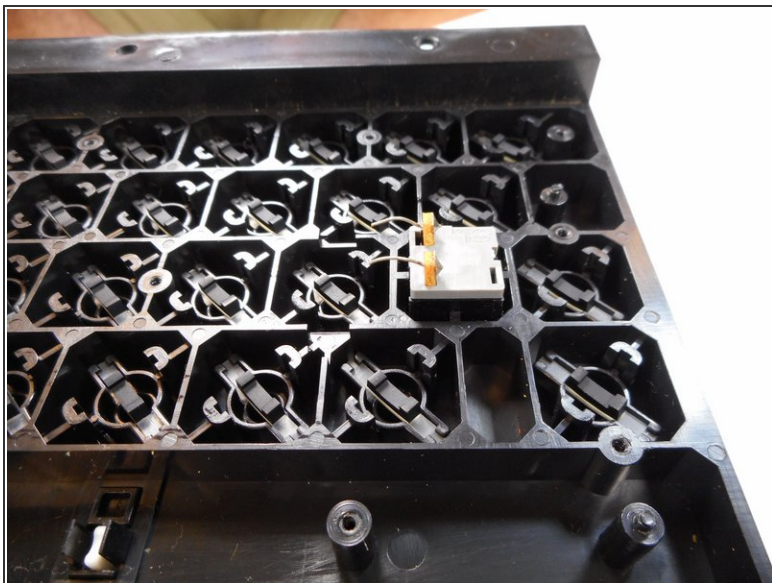
- 5. Detach the multi-colored wire bundles connected to the motherboard

Step 6 — Cutting the Wires



- 6. Next, carefully cut the two small wires which are connected from the Shift/Lock key to the keyboard.

Step 7 — Removing the Shift-Lock key



- 7. Turn the keyboard down on its face and push the shift lock key out from the back of the keyboard.

Step 8 — Removal of circuit component from shift-lock key (optional)



- 8. You can remove the circuit component (gray piece attached to the shift lock key spring) by pulling back slightly on its clip and pulling it apart from the shift lock key button.

i * Take off the shift key button from the spring by using any Philips screwdriver to pry it off from the spring.

To reassemble your device, follow these instructions in reverse order.