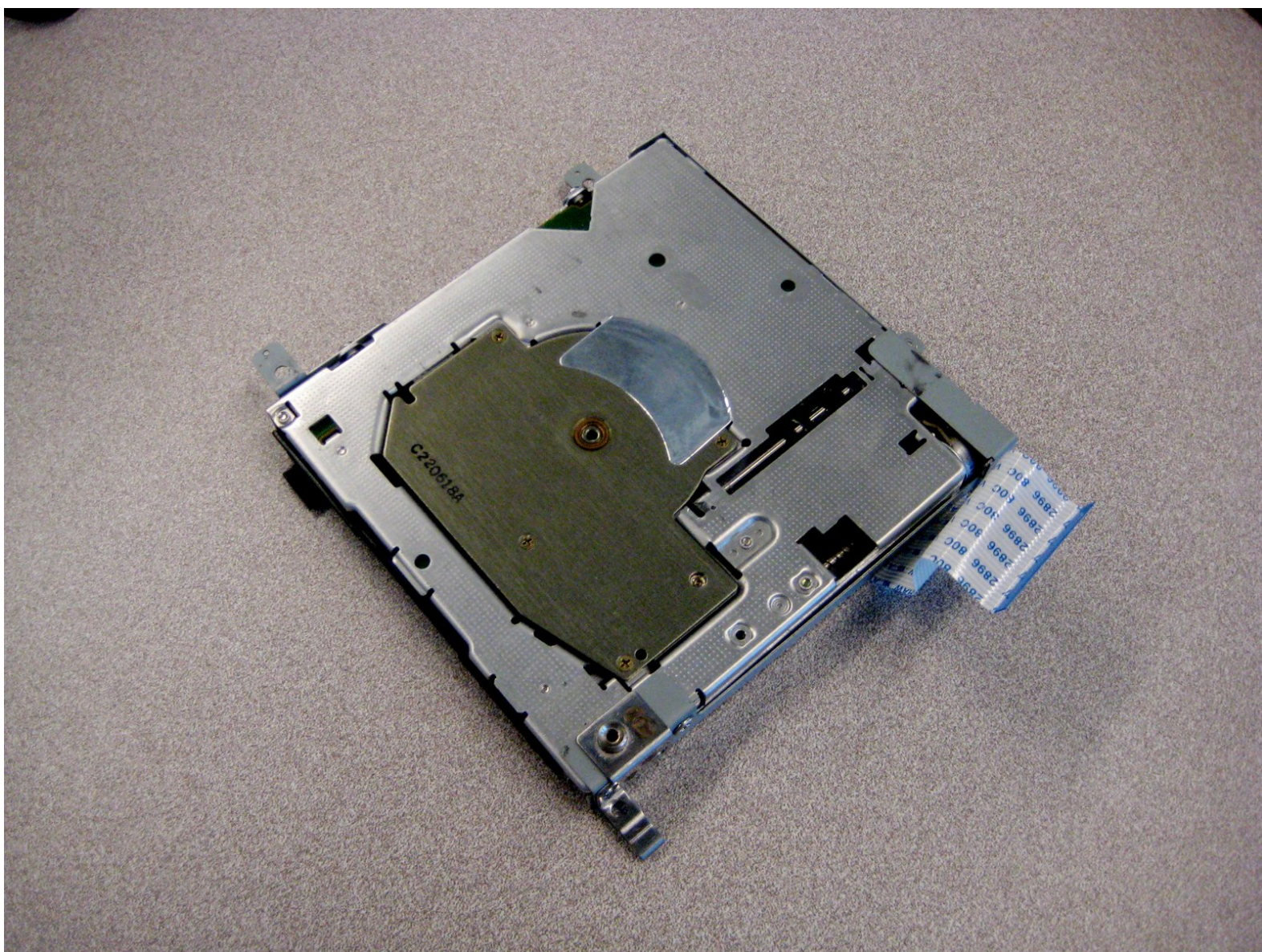




Compaq Evo N1000v Floppy Drive Replacement

Written By: Alex Hernandez



INTRODUCTION

A guide on how to remove the **Floppy Drive**.



TOOLS:

- [Phillips #00 Screwdriver](#) (1)
 - [Spudger](#) (1)
 - [T8 Torx Screwdriver](#) (1)
-

Step 1 — LED Cover



- Turn the laptop bottom side up with the rear panel facing forward.

Step 2



- Remove the two T8 Torx screws that secure the LED cover to the base enclosure.

Step 3



- Turn the laptop top side up with the front facing forward. Open the screen.

Step 4



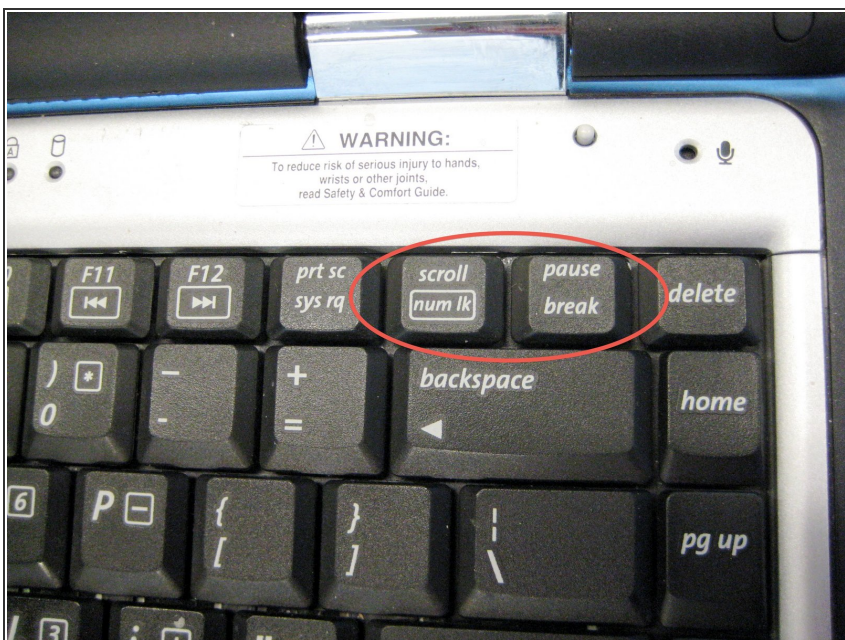
- Locate the **F1** and **F2** keys near the top left corner of the keyboard.

Step 5



- While holding the **F1** and **F2** keys, insert a spudger between the keys into the notch in the LED cover. Lift up.

Step 6



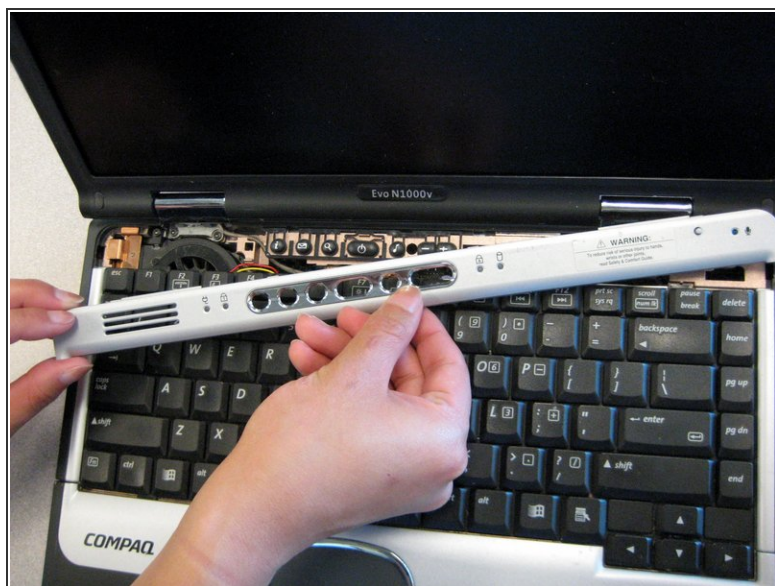
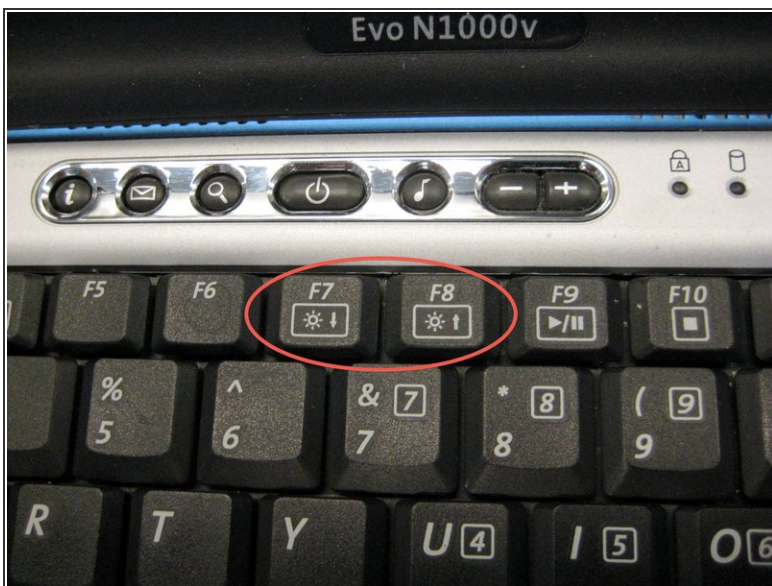
- Locate the **Pause** and **Scroll** keys near the top right corner of the keyboard.

Step 7



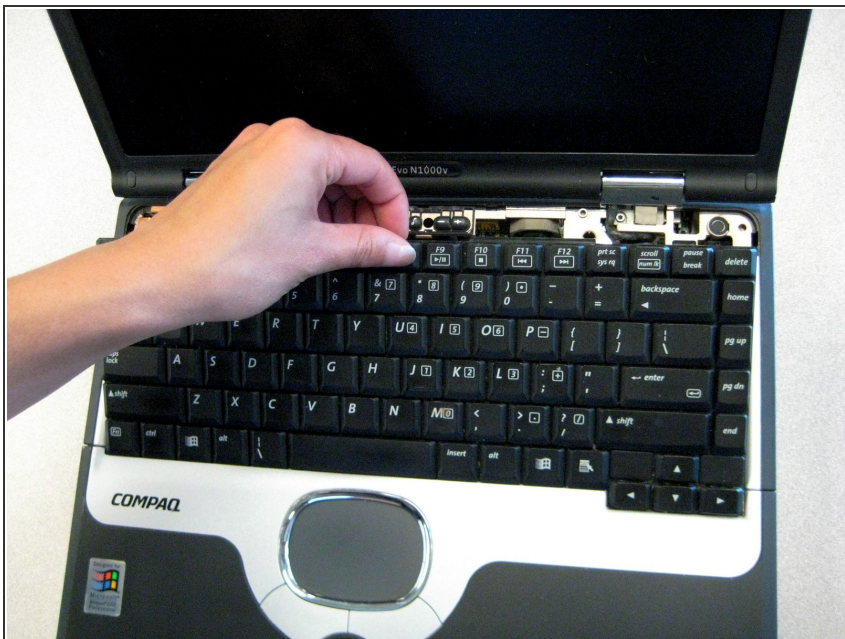
- While holding the **Pause** and **Scroll** keys, insert a spudger between the keys into the notch in the LED cover. Lift up.

Step 8



- Insert a spudger between the **F7** and **F8** keys. Lift up to remove the LED cover.

Step 9 — Keyboard



- Lift the back edge of the keyboard and pull towards the screen.

Step 10



- Pull the cable and lift up to release.

Step 11



- Remove the keyboard.

Step 12 — Palm Rest



- Flip the computer bottom side up with the rear facing forward.

Step 13



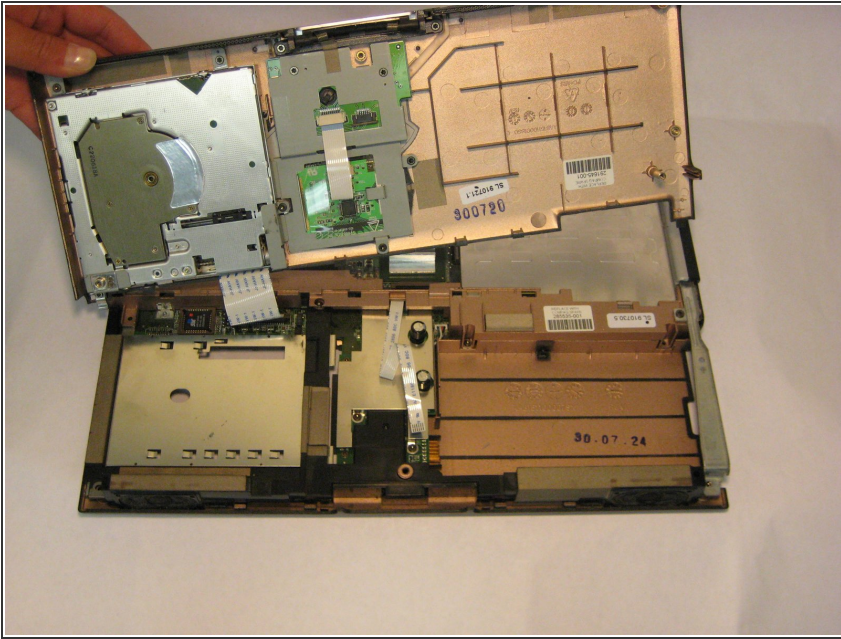
- Remove the six screws shown in picture.

Step 14



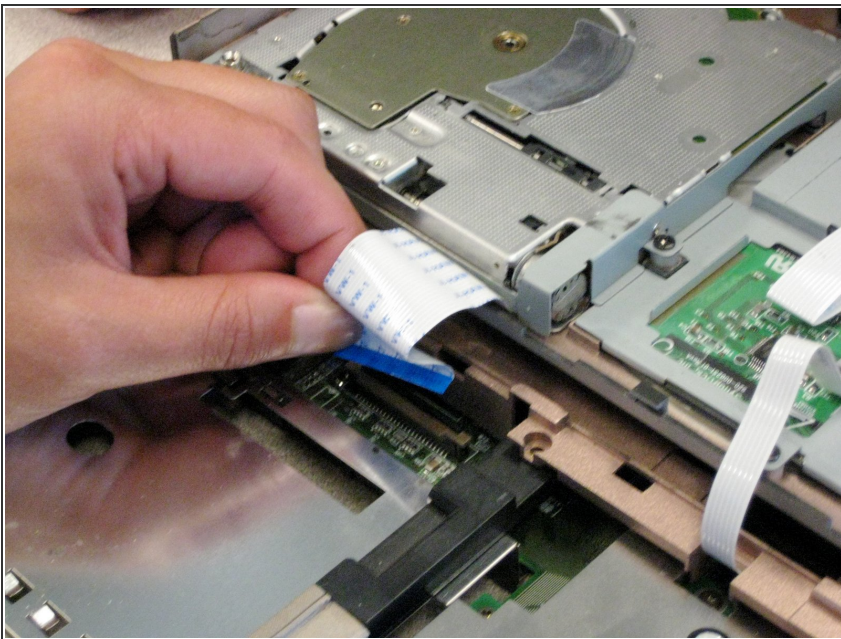
- Remove battery and then remove screw in metal support on case edge
- Flip the computer top side up with the front facing you.

Step 15



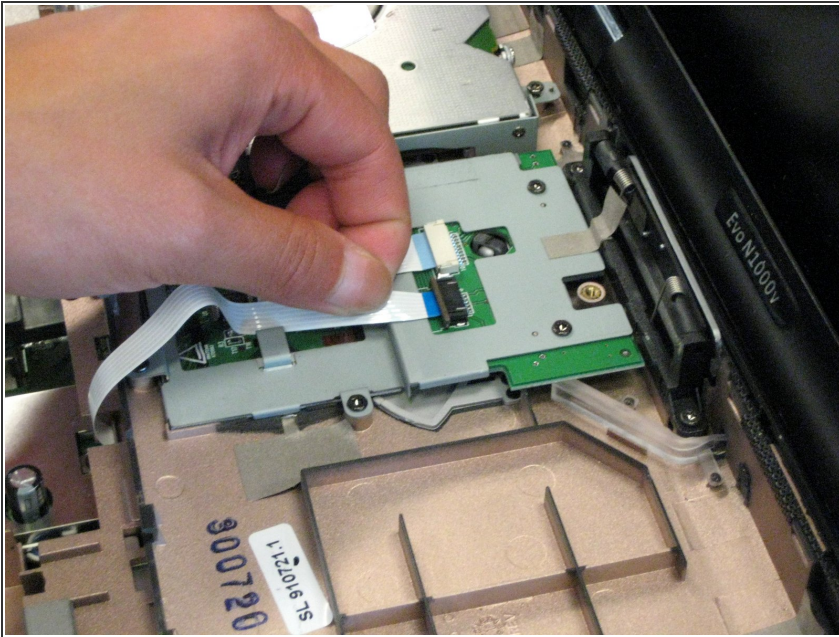
- Lift up the palm rest from the front edge and swing it towards the screen.

Step 16



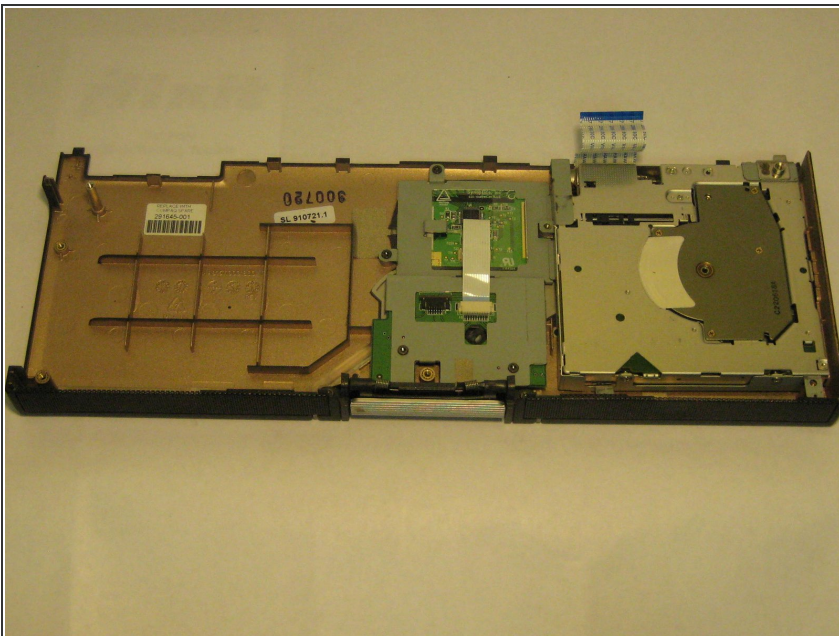
- Locate the first connector. Disconnect by firmly pulling up.

Step 17



- Locate the second connector. Remove by firmly pulling up.

Step 18



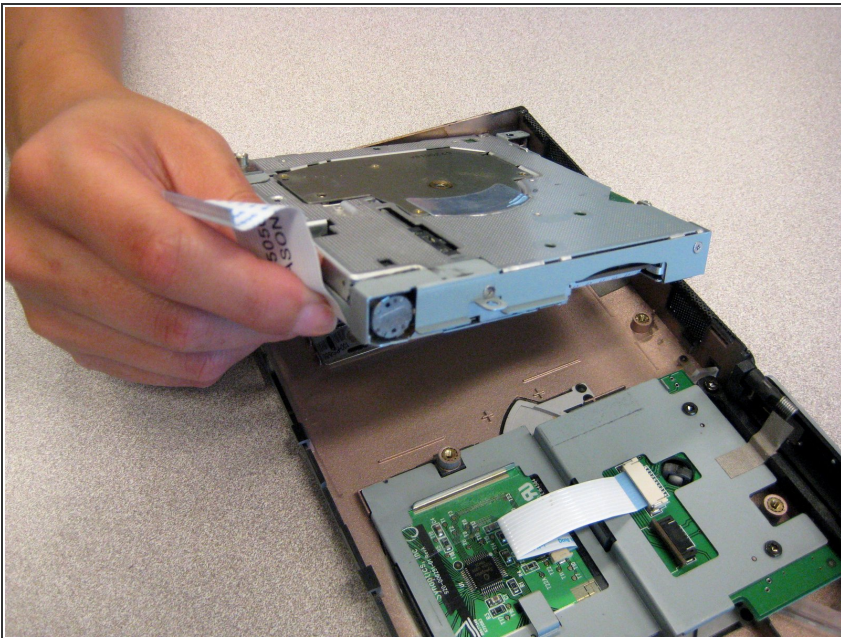
- Remove the palm rest.

Step 19 — Floppy Drive



- Locate and remove the three screws shown in picture.

Step 20



- Lift up and remove floppy drive from the palm rest.

To reassemble your device, follow these instructions in reverse order.