



INTRODUCTION

A guide on how to remove the **LED Cover**.



TOOLS:

- [Spudger](#) (1)
 - [T8 Torx Screwdriver](#) (1)
-

Step 1 — LED Cover



- Turn the laptop bottom side up with the rear panel facing forward.

Step 2



- Remove the two T8 Torx screws that secure the LED cover to the base enclosure.

Step 3



- Turn the laptop top side up with the front facing forward. Open the screen.

Step 4



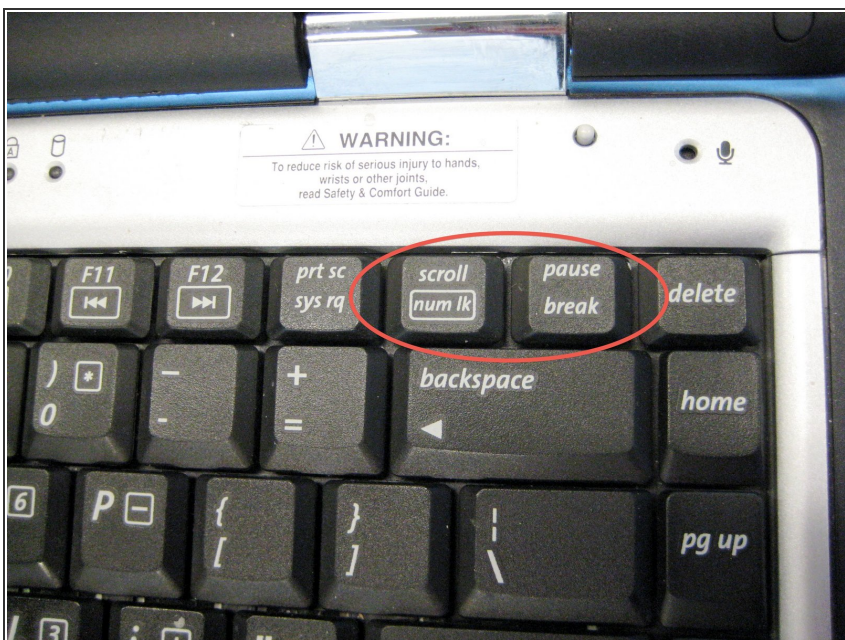
- Locate the **F1** and **F2** keys near the top left corner of the keyboard.

Step 5



- While holding the **F1** and **F2** keys, insert a spudger between the keys into the notch in the LED cover. Lift up.

Step 6



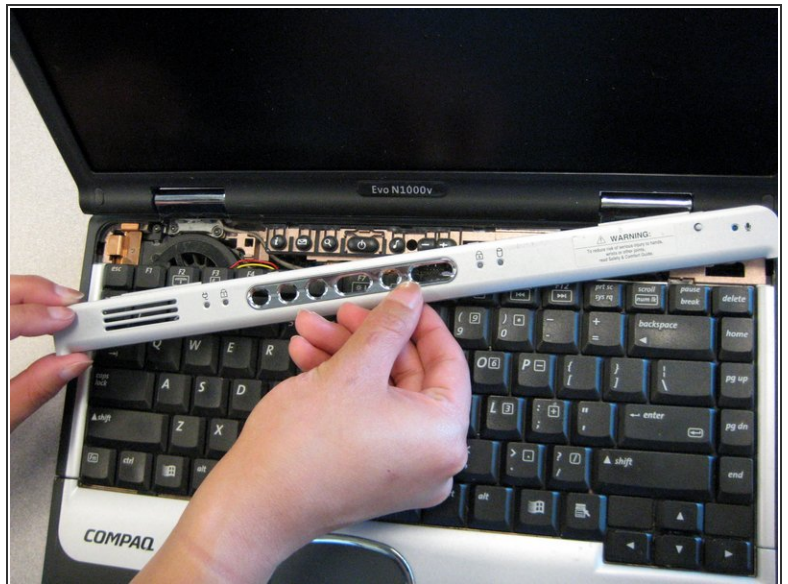
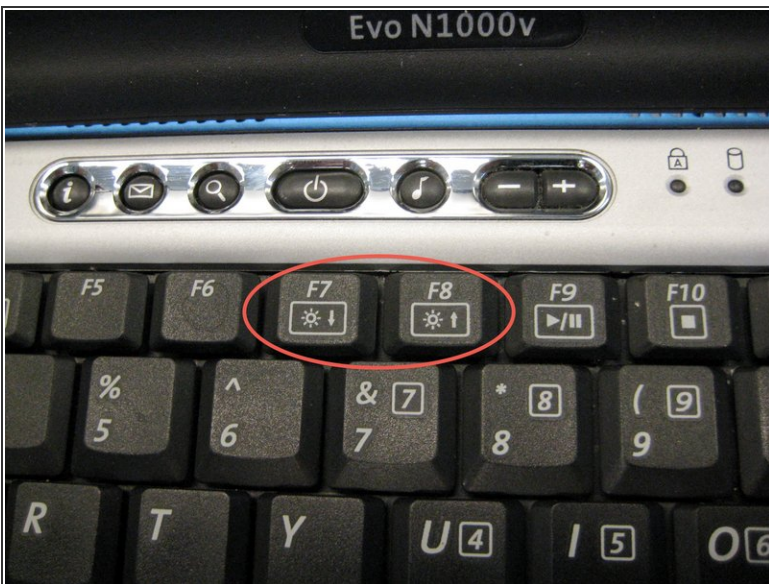
- Locate the **Pause** and **Scroll** keys near the top right corner of the keyboard.

Step 7



- While holding the **Pause** and **Scroll** keys, insert a spudger between the keys into the notch in the LED cover. Lift up.

Step 8



- Insert a spudger between the **F7** and **F8** keys. Lift up to remove the LED cover.

To reassemble your device, follow these instructions in reverse order.