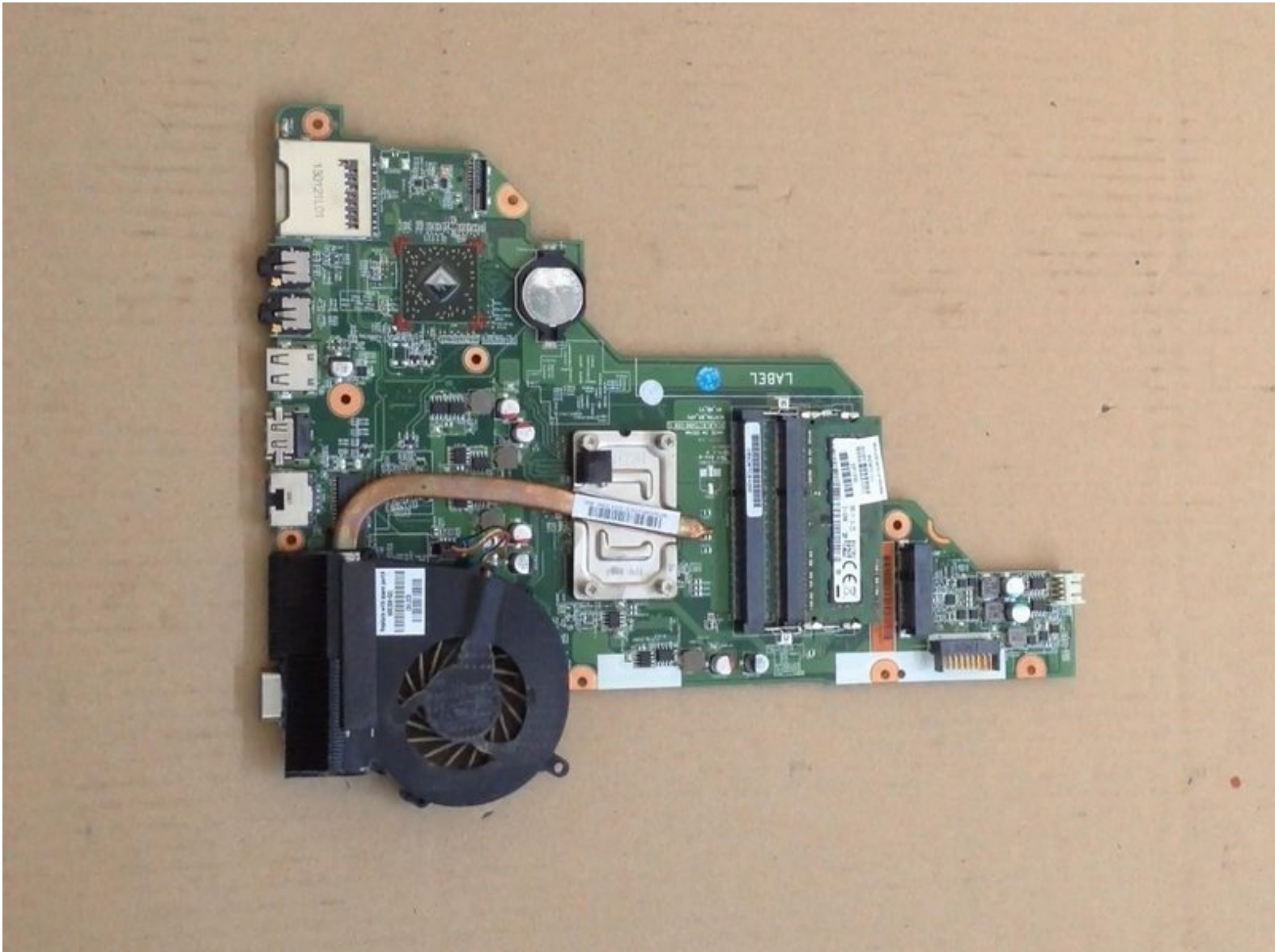




Compaq Presario CQ58 Cooling / FAN system cleaning

Compaq Presario CQ58 Cooling / FAN system cleaning

Written By: ZFix



INTRODUCTION

If your system overheats, in this video we will show you

how to disassemble / take apart Compaq Presario CQ58, clean the Cooling / Fan System and change the thermal Compound / Grease.

[Please SUBSCRIBE to my channel ツ](#)

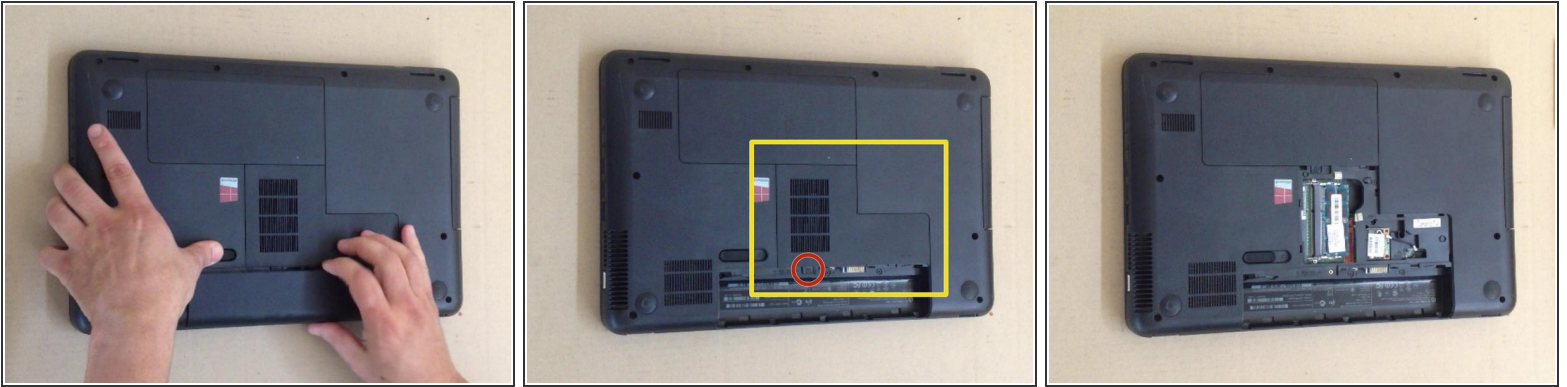
[video: <https://www.youtube.com/watch?v=QDYM7m1AfLU>]



TOOLS:

- [iFixit Opening Tools](#) (1)
 - [Phillips #0 Screwdriver](#) (1)
 - [Tweezers](#) (1)
 - [thermal compound](#) (1)
-

Step 1 — Cooling / FAN system cleaning



- Switch-off the laptop and remove the battery.
- Remove the memory cover.

Step 2



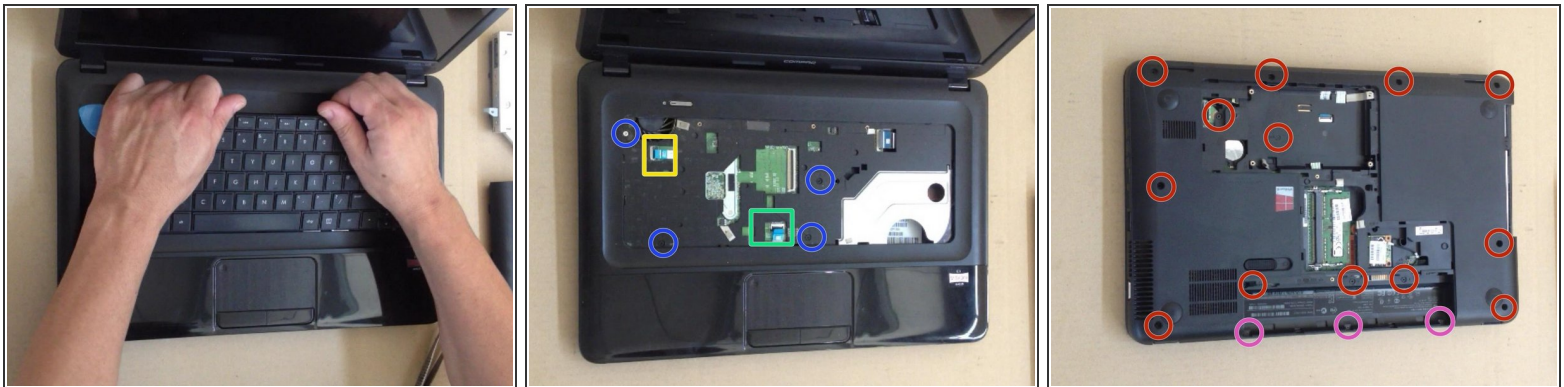
- Remove the HDD cover.
- Unpin the HDD.

Step 3



- Near to the WiFi card you can see one screw hole with a keyboard symbol. This screw holds the Keyboard.
- To remove the Keyboard, you must open 5X locking clips.

Step 4



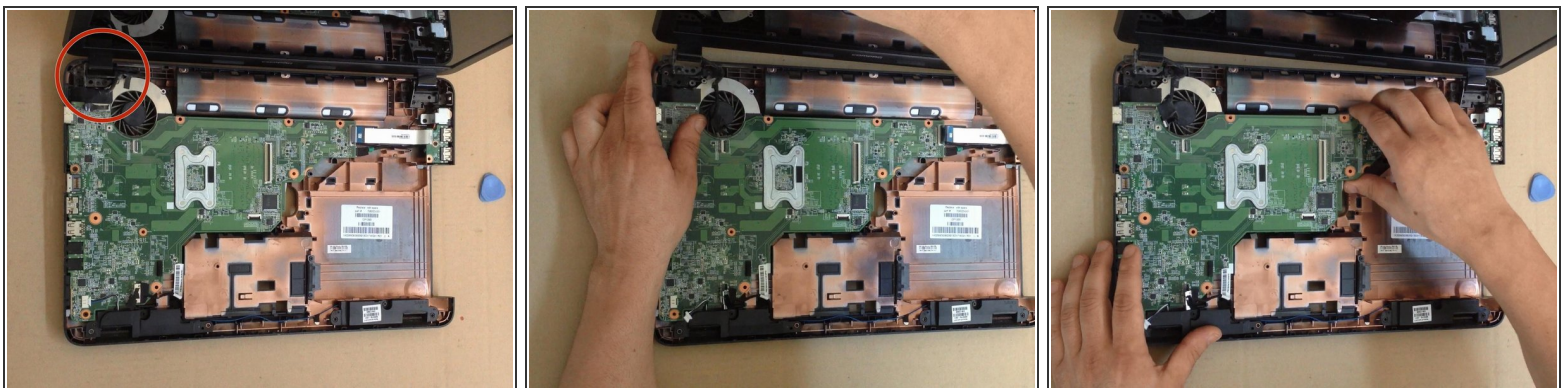
- Under the Keyboard there are:
 - 4x M2.5x5.0 screws
 - Mouse flex cable connector
 - Power On button flex cable connector.
- Unscrew the screws on the bottom side of the laptop:
 - 13x M2.5x5.0
 - 3x M2.5x3.0

Step 5



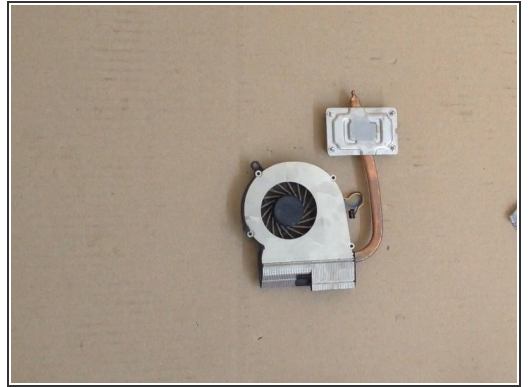
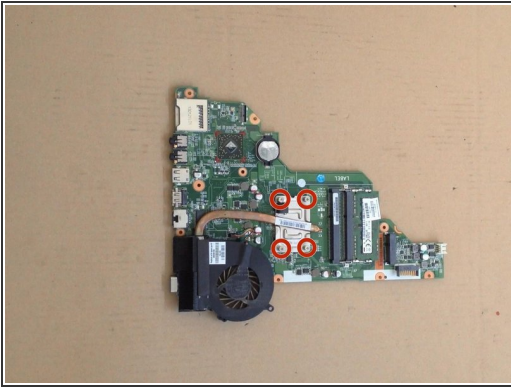
- Use a plastic tool to separate and remove the upper case.
- Unscrew 5x screws and disconnect:
 - LCD Display cable
 - Additional USB board cable
 - Power jack cable
 - Loudspeaker cable
 - SATA HDD cable

Step 6



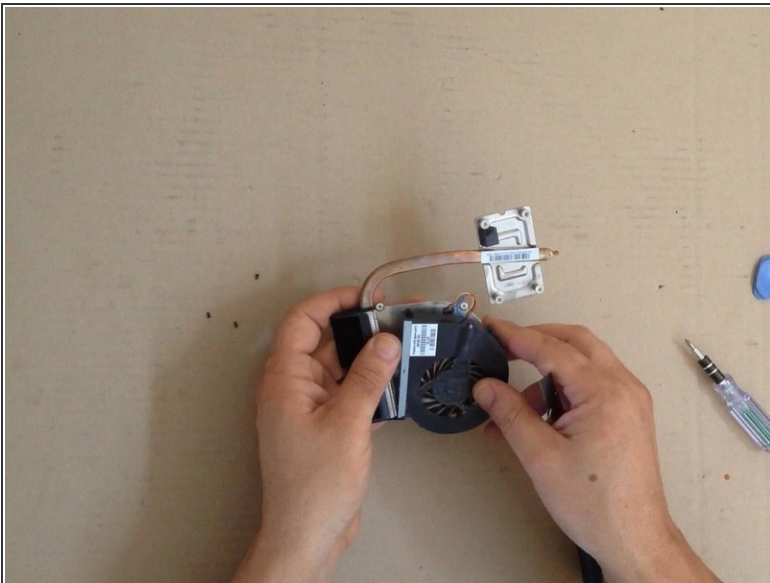
- Move a little the LCD display hinge.
- Remove the board by starting from the right side.

Step 7



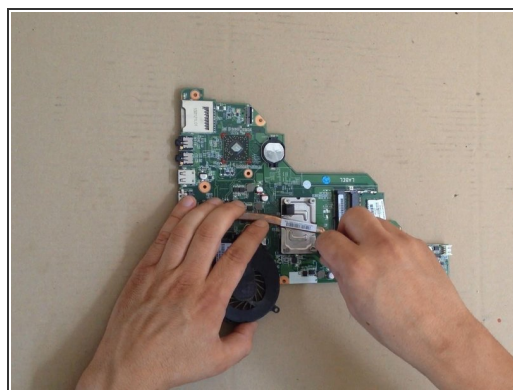
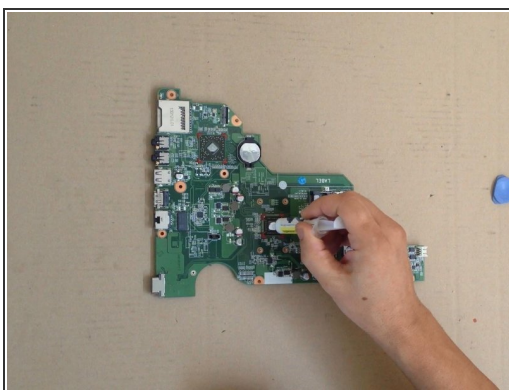
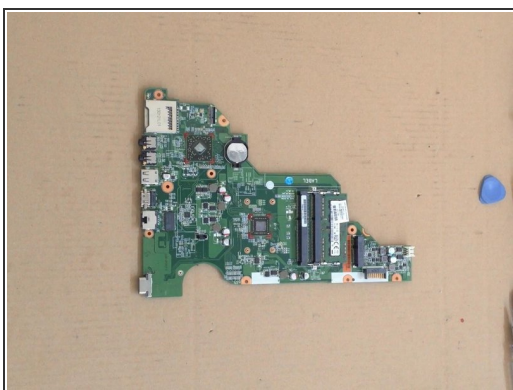
- Remove the cooling system.

Step 8



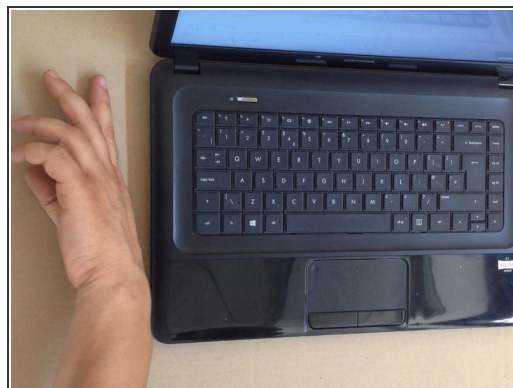
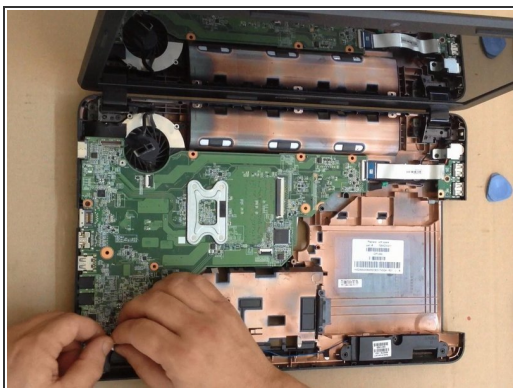
- Open the fan and clean the dust from inside with a soft brush.

Step 9



- Clean the old thermal compound (from the CPU and from the heat-sink system).
- Put a new thermal compound and start with reassembling.

Step 10



- When you start the system, check that fan is working.
- .
- Did you do it successfully?

 [Please SUBSCRIBE to my channel ツ](#)

To reassemble your device, follow these instructions in reverse order.