



# Compaq Presario V2414NR Hard Drive Replacement

If you have a faulty hard drive, this guide will tell you how to remove and replace it.

Written By: Ryan Schmidt



---

## INTRODUCTION

The hard drive is a vital component which stores the operating system and all your data. If your drive is broken or has errors, you'll probably have blue screen errors.



### TOOLS:

- [Phillips #1 Screwdriver](#) (1)
-

## Step 1 — Battery



- Shutdown the computer.
- Remove all external devices.
- Unplug the power, and any other cords, from the laptop.
- Turn the laptop upside down, with the front towards you.

## Step 2

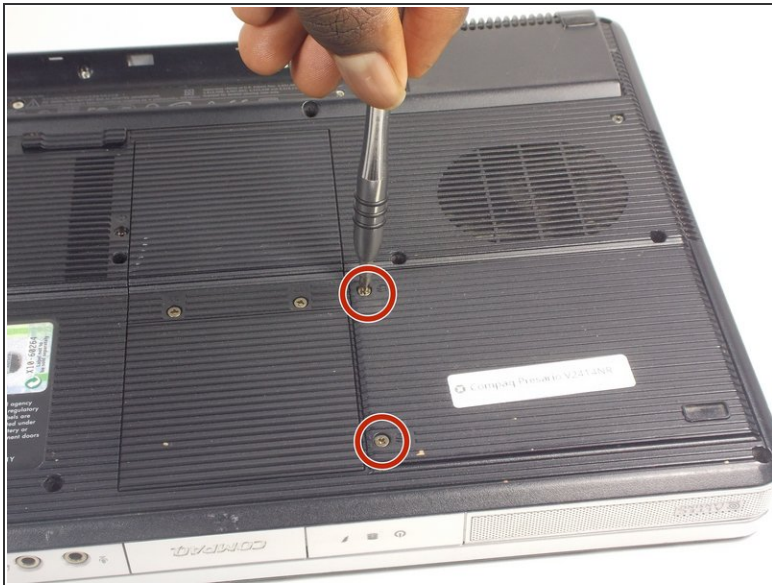


- Slide the battery release latch to the left until the battery pops up.
  - Lift the front edge of the battery pack and swing it back to remove it.
- ☑ When reassembling, first align the back of the battery with the chassis, then press the front downwards until it latches.

This document was generated on 2019-09-21 02:36:50 PM (MST).



## Step 3 — Hard Drive



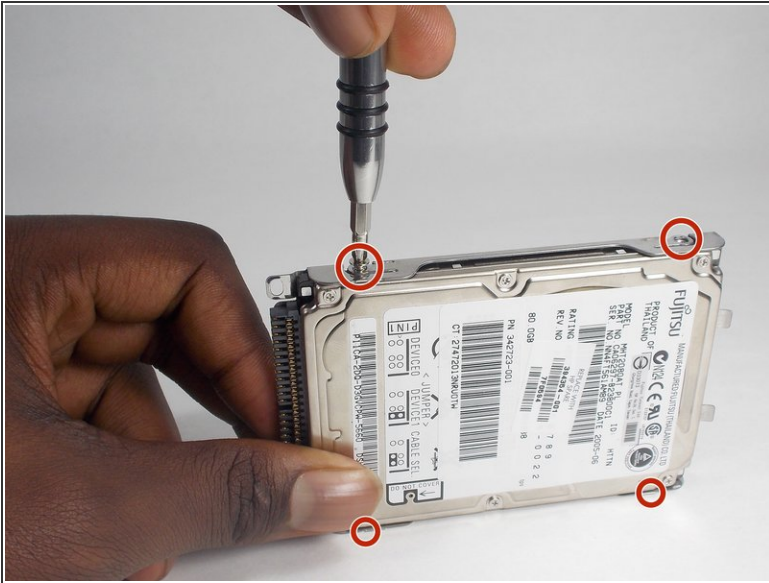
- Loosen the two 5mm Philips #1 screws that secure the hard drive cover to the computer.
  - ⓘ These screws are captured to the cover panel.
- Lift the left side of the cover and swing it to the right to remove it.

## Step 4



- Grasp the black Mylar tab on the hard drive frame and pull firmly straight up until the hard drive disconnects from the computer, and remove it.
- ✦ When reassembling: First, align the two tabs on the hard drive with the slots in the chassis, then press down on the left edge of the hard drive to seat the contacts.

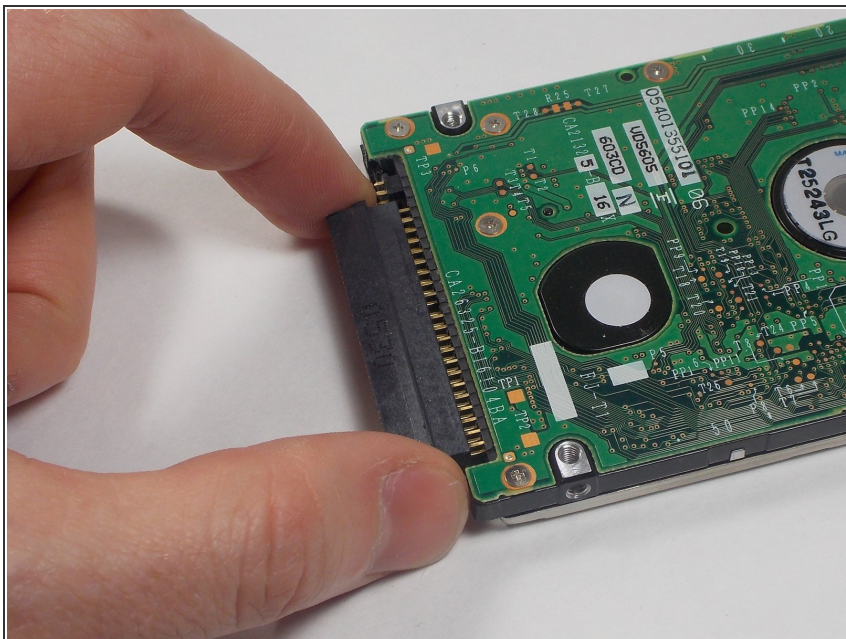
## Step 5



- Remove the four 4mm Philips #1 screws, two on each side, that secure the hard drive frame to the hard drive.
- ⚠ These screws are different from the rest of the laptop screws. You can damage the drive using the wrong screws.
- Lift the frame to remove it from the hard drive.



## Step 6



- Slide the hard drive connector straight off of the hard drive.
  - ⚠ Be sure not to tilt the connector while removing it to avoid bending the delicate hard drive connector pins.
  - 📌 When reassembling, position the contacts towards the top of the drive (metal covered side).

To reassemble your device, follow these instructions in reverse order.