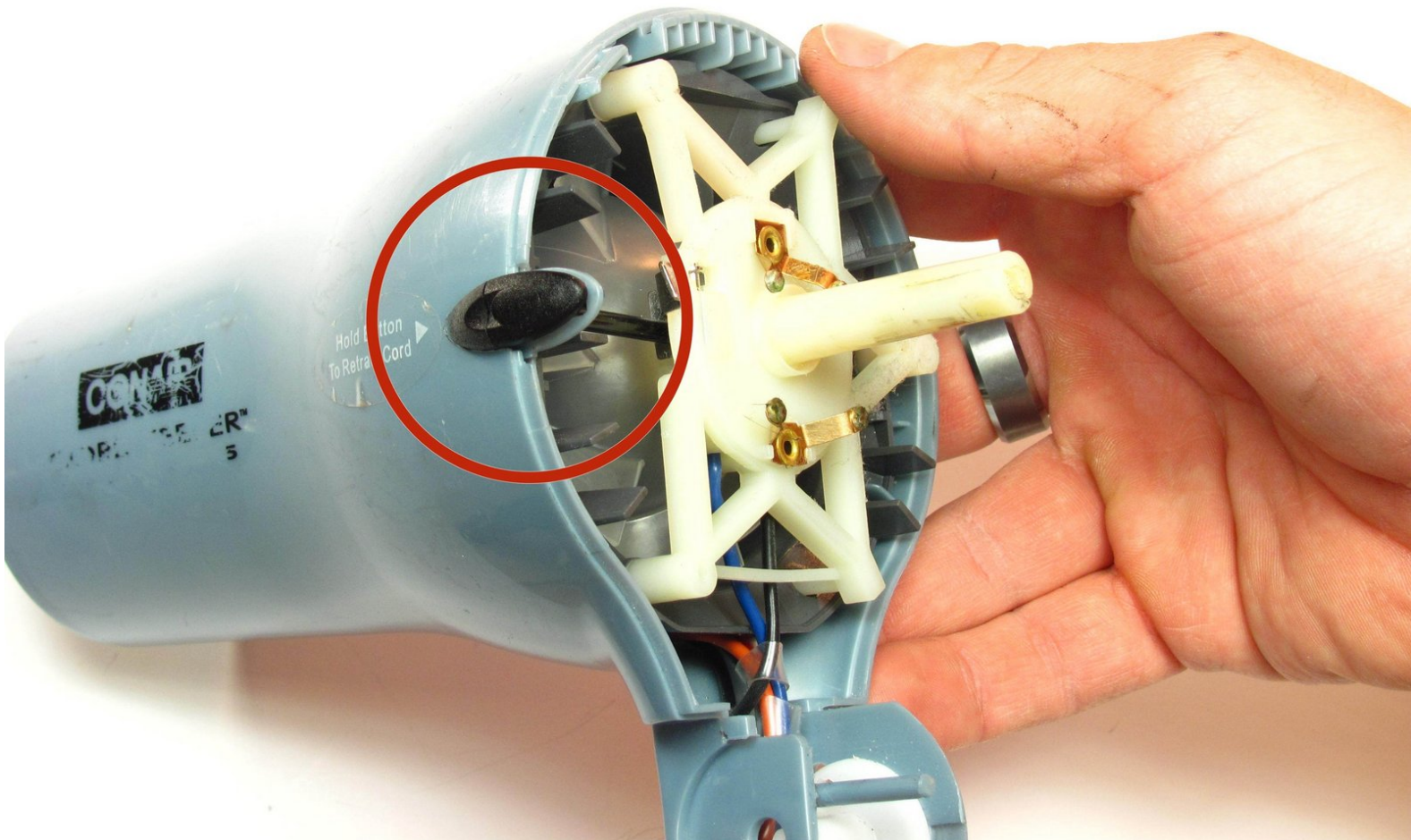




Conair Cord-Keeper 169XR Cord Retracting Button Replacement

This guide will show you how to replace your cord retracting button.

Written By: Candace



INTRODUCTION

If your cord isn't retracting and your retracting wheel is working fine, then the button may be broken and would need to be replaced.



TOOLS:

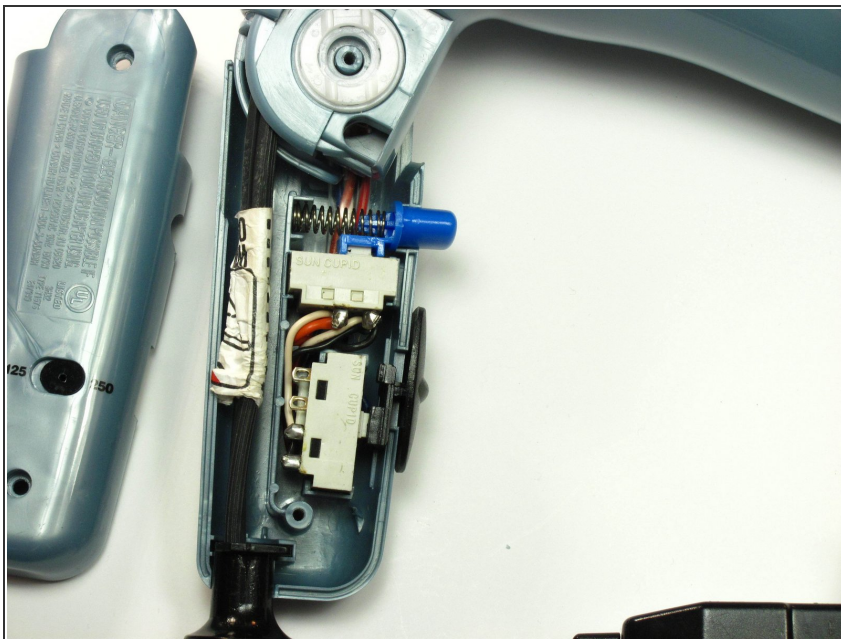
- [Phillips #2 Screwdriver](#) (1)
-

Step 1 — Handle



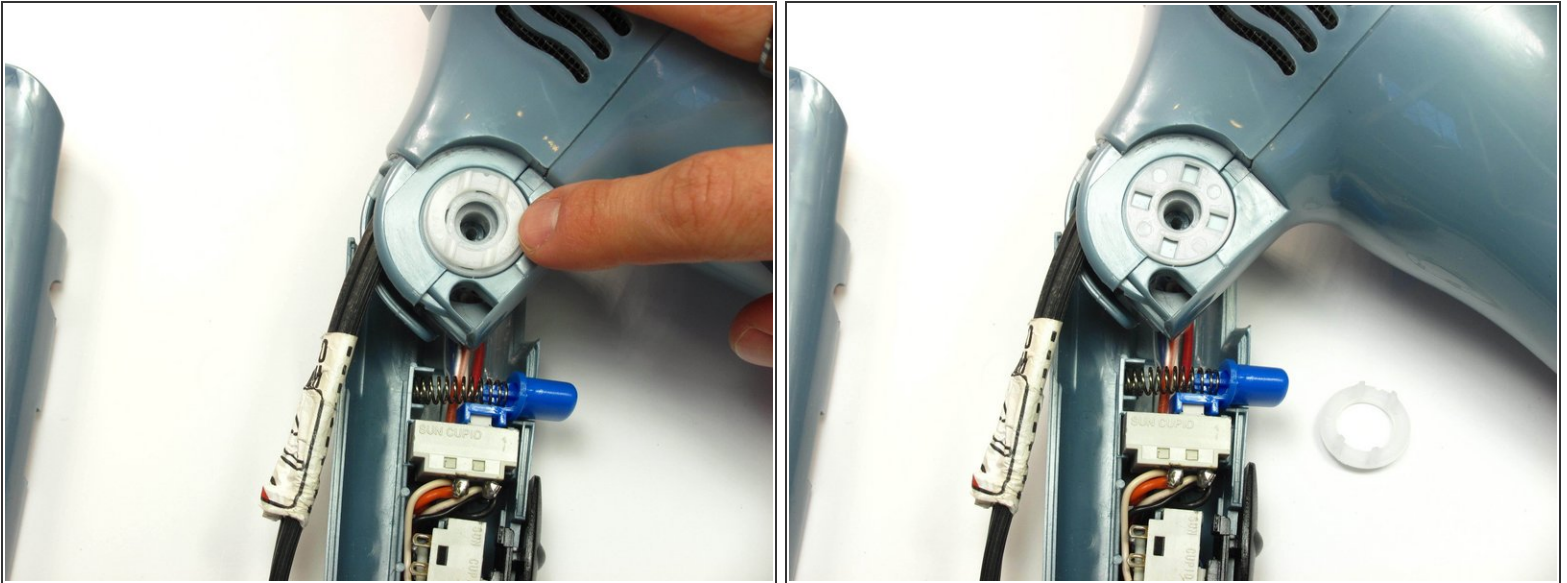
- Unscrew the two 18 mm long Phillips #2 screws on the side of the hair dryer.

Step 2



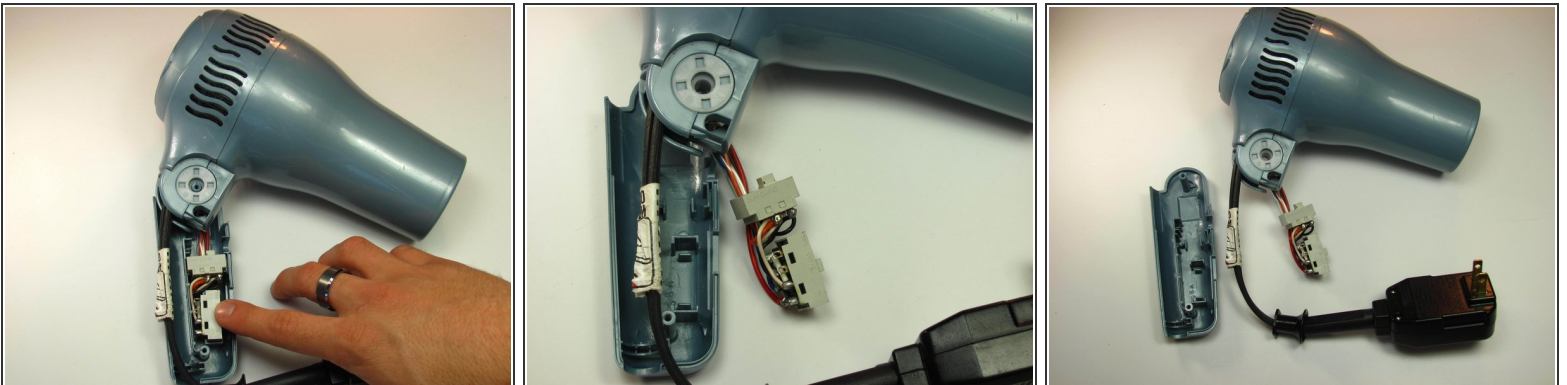
- ⚠ Some pieces may fall out when removing the face of the handle.
- Once you have taken the screws out, take the top half of the handle off by lifting it off of the dryer.

Step 3 — Dryer Head



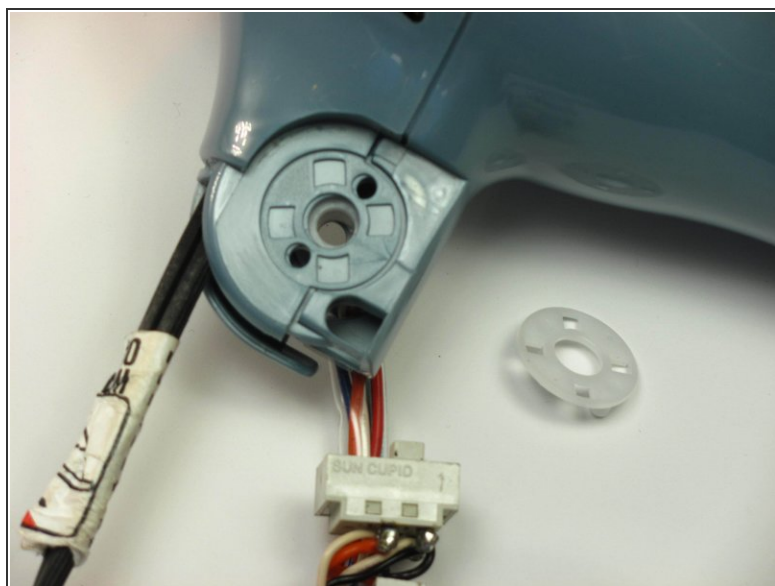
- Remove the inner white disk piece by gently pulling it out with your finger nail.

Step 4



- Gently remove the tan boxes (power supply) by wiggling them out of place and set them aside so you can take the back part of the handle off.

Step 5



- Remove the inner white disk piece from the base of the dryer head by gently pulling it out with your finger nail.

Step 6



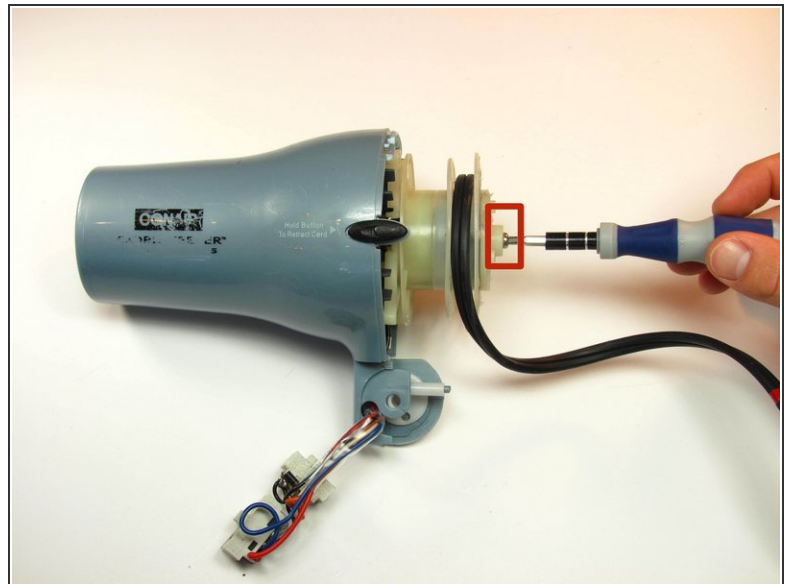
- Unscrew the three 12 mm long Phillips #2 screws to remove the back of the hairdryer.

Step 7



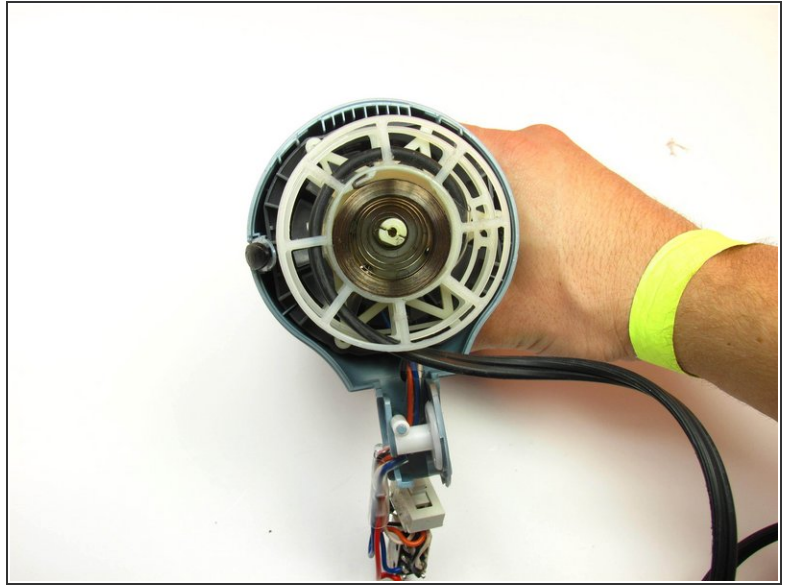
- Once the three screws are removed, pop the back of the dryer off by wiggling it until it comes loose. This shouldn't take too much effort.

Step 8



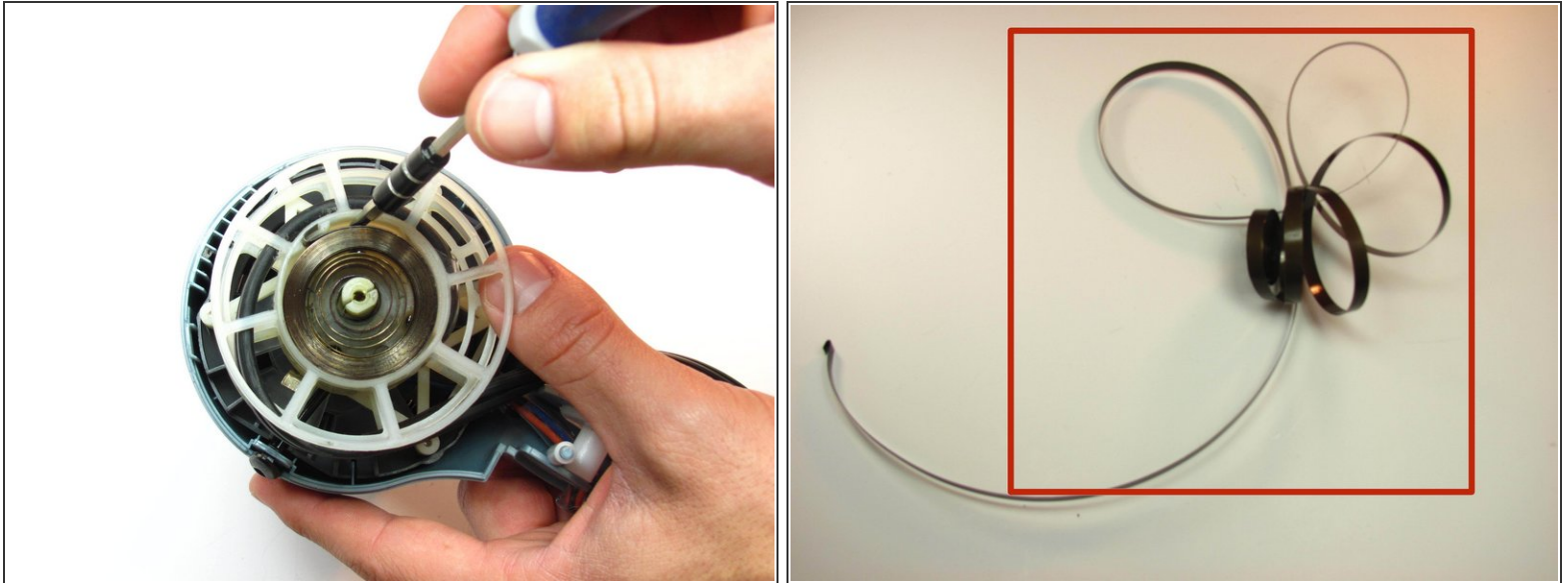
- At this point, unwind the cord and lay it to the side so you can get to the screw in the middle easier.
- Remove the single 12 mm long Phillips #2 screw in the middle of the cord track.

Step 9



- Take off the white cap that covers the heating coil. You will see a wound up piece of metal (cord retracting coil) underneath once the cap is removed.

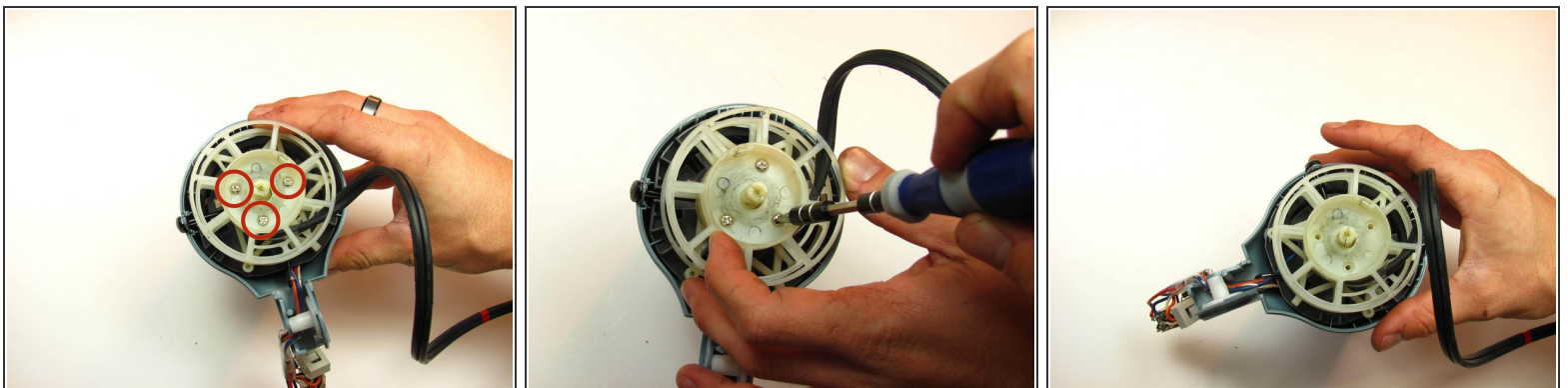
Step 10



! When removing the coil, make sure it stays wound up. It could very easily pop out, and you would have to wind it all the way back up and try to squeeze it back into the slot when you reassemble the dryer.

- To remove the coil, use your screw driver to pop the coil out of the slot.
- This is what the coil would look like if it came undone when you removed it.

Step 11



- Once the coil is removed, unscrew the three 11 mm long Phillips #2 screws underneath to remove the retracting wheel.

Step 12 — Cord Retracting Button



- Once the retracting wheel is off, you can get to the retracting button and gently remove it by pulling it out of the groove it is resting in.
- Now you just need to replace it with a new one. (The stem of your button may have broken and stopped activating the retracting wheel).

To reassemble your device, follow these instructions in reverse order.