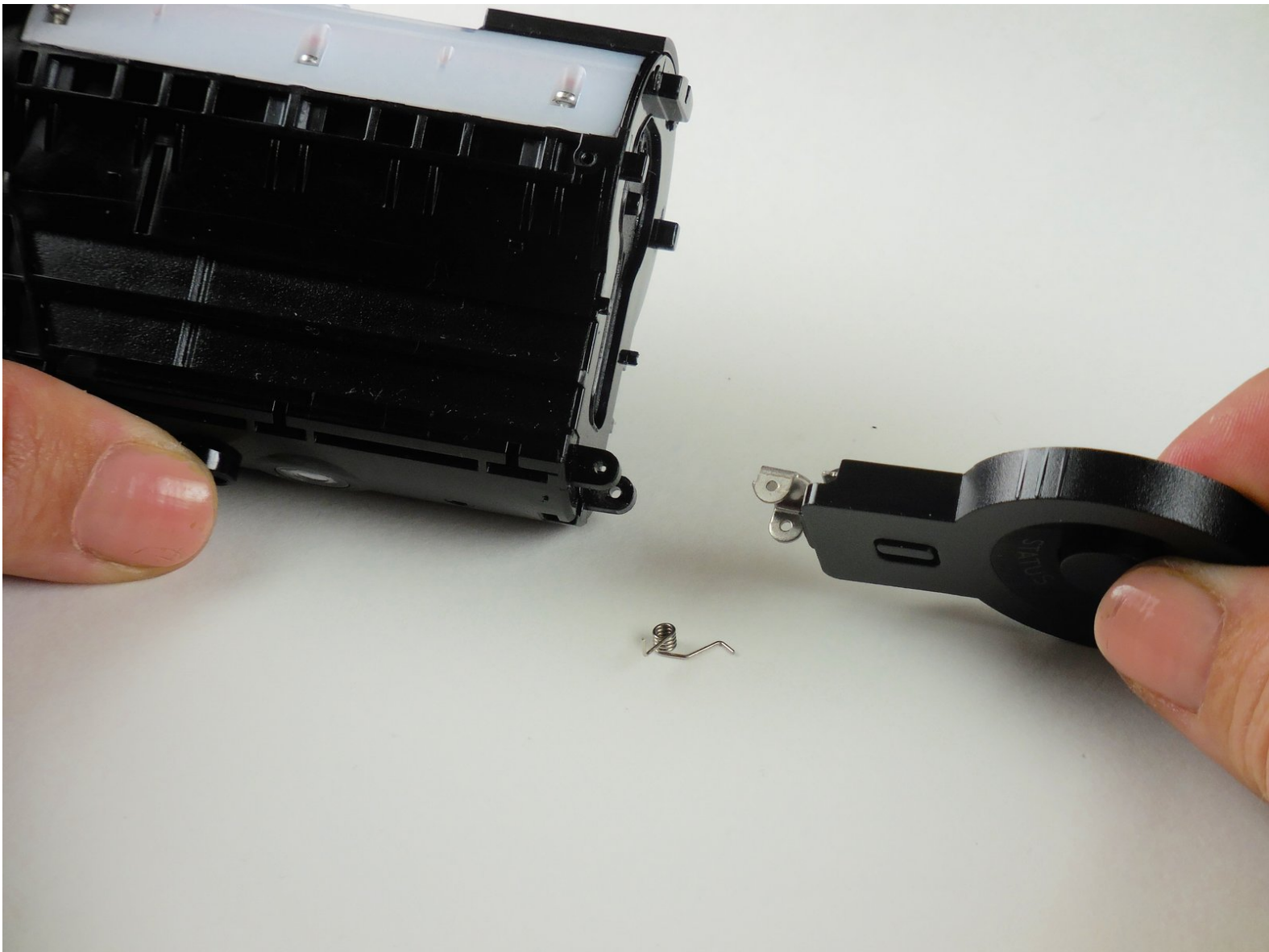




# Contour Roam2 Back Door Replacement

This guide will show you how to replace the back door on your Contour Roam2 if it is damaged or the stays button is no longer working.

Written By: Jamie Maple



# INTRODUCTION

This guide will give you step-by-step instructions on how to replace the back door on your Contour Roam2. Follow this guide if it is damaged or the stays button is no longer working.

---

## TOOLS:

- [Tweezers](#) (1)
  - [SIM Card Eject Tool](#) (1)
  - [Paper Clip](#) (1)
  - [Metal Spudger](#) (1)
  - [Phillips #000 Screwdriver](#) (1)
-

## Step 1 — Record Slider



- Using the phillips head screwdriver (PH000) locate and remove the 4.45mm (.175in) screw by the 180 degree graphic on the metal ring.

⚠ The screws in the camera are very small and can strip very easily. Apply consistent pressure when removing screws.

## Step 2



- Rotate the metal ring counterclockwise until completely removed.

### Step 3



- Using the phillips head screwdriver (PH000) remove the two 4.46mm (.175in) screws on each side near the back of the camera.

### Step 4



- Grab the camera on both sides and slide the outer shell forward until completely removed.



## Step 5



- Lift the record slider out.
- ⓘ The record slider should come out easily no matter the position (forward or backward).

## Step 6 — Mounting Piece



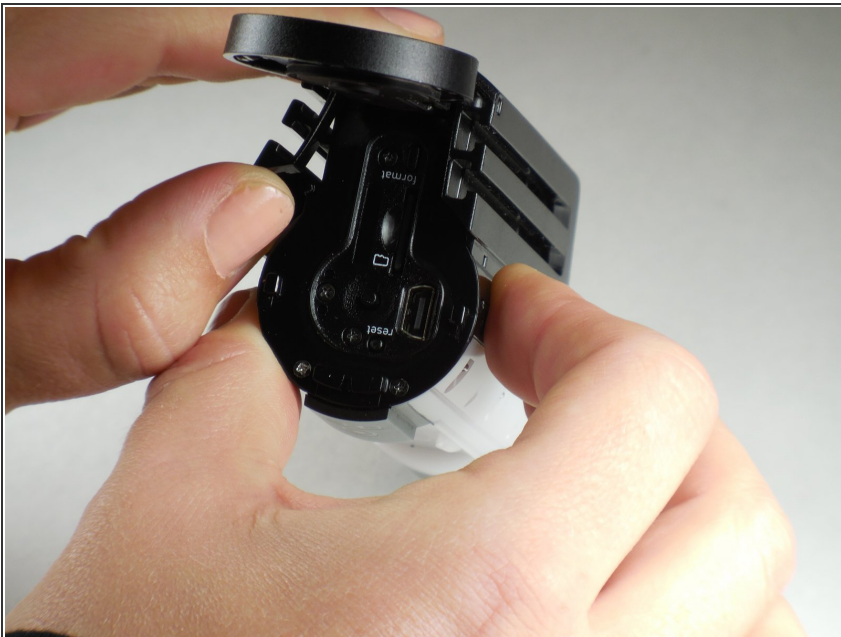
- Using the phillips head screwdriver (PH000) remove the two 3.82mm (0.150in) screws on the bottom of mounting piece near the tripod screw-in.
- ☑ The screws in the camera are very small and can strip very easily. Apply consistent pressure when removing screws.

## Step 7



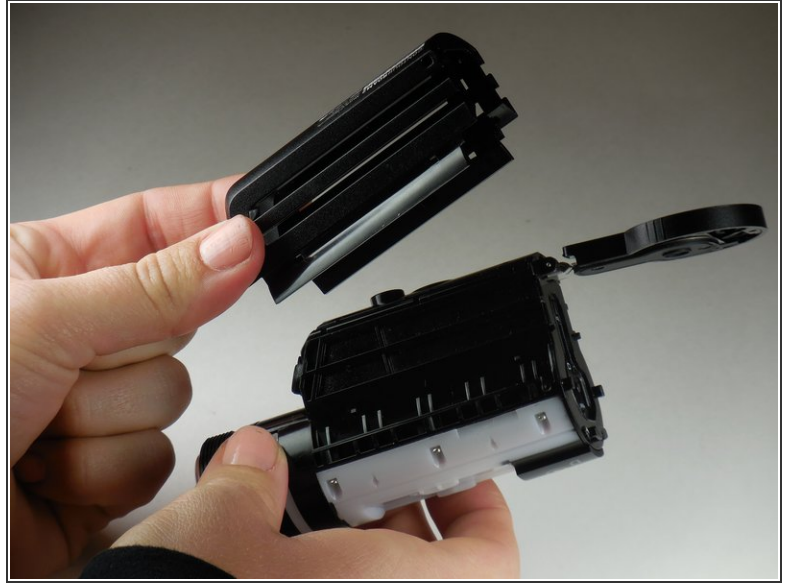
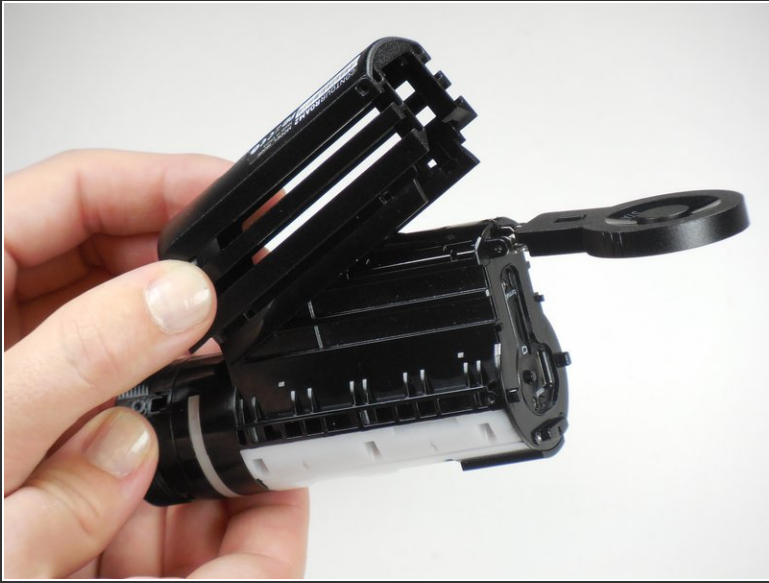
- Open the back door by your thumb and index finger on sides of back door and pull upward.

## Step 8



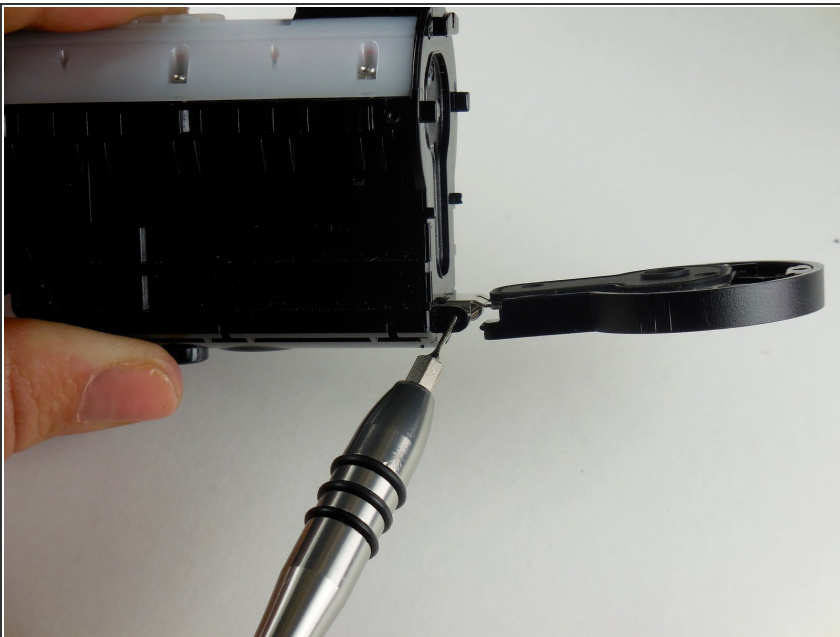
- Using your thumb, pry sides outward on back of mount piece.
- ⓘ This will loosen mount piece for removal in proceeding step.
- ⓘ Side can be hard to pry outward. Using a flat tool such as a metal spudger, may help if your thumb is insufficient.

## Step 9



- Remove and replace mount piece.

## Step 10 — Back Door

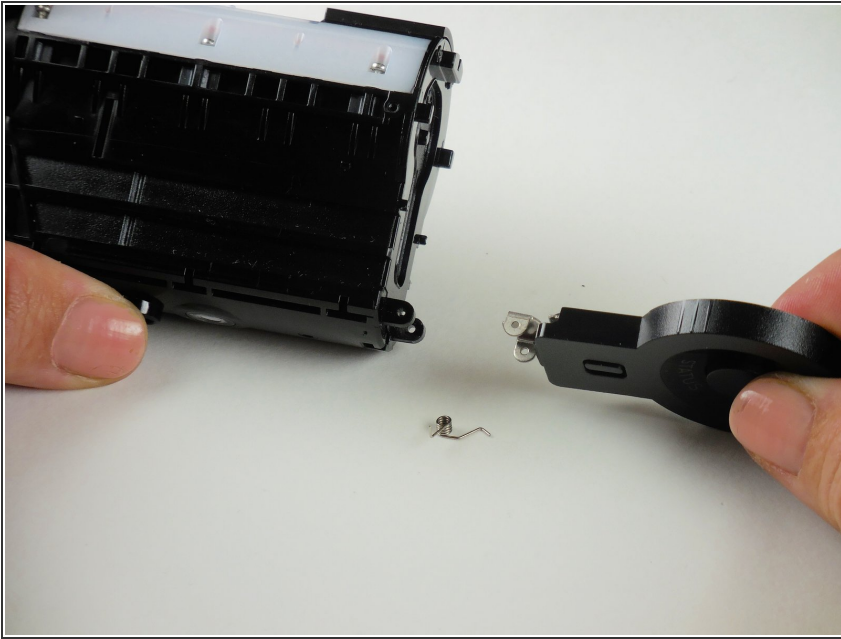


- Using a paper clip or a SIM eject tool size 0.8, push the metal bar out from the spring located on bottom of back door.

⚠ After removing the metal bar, the spring will become loose and may fall out on its own.



## Step 11



- Remove and replace back door.
- ⓘ Door should easily be removed by pulling away from main body of camera.
- ⚠ As door is being pulled away, the spring may fall out on its own.

To reassemble your device, follow these instructions in reverse order.