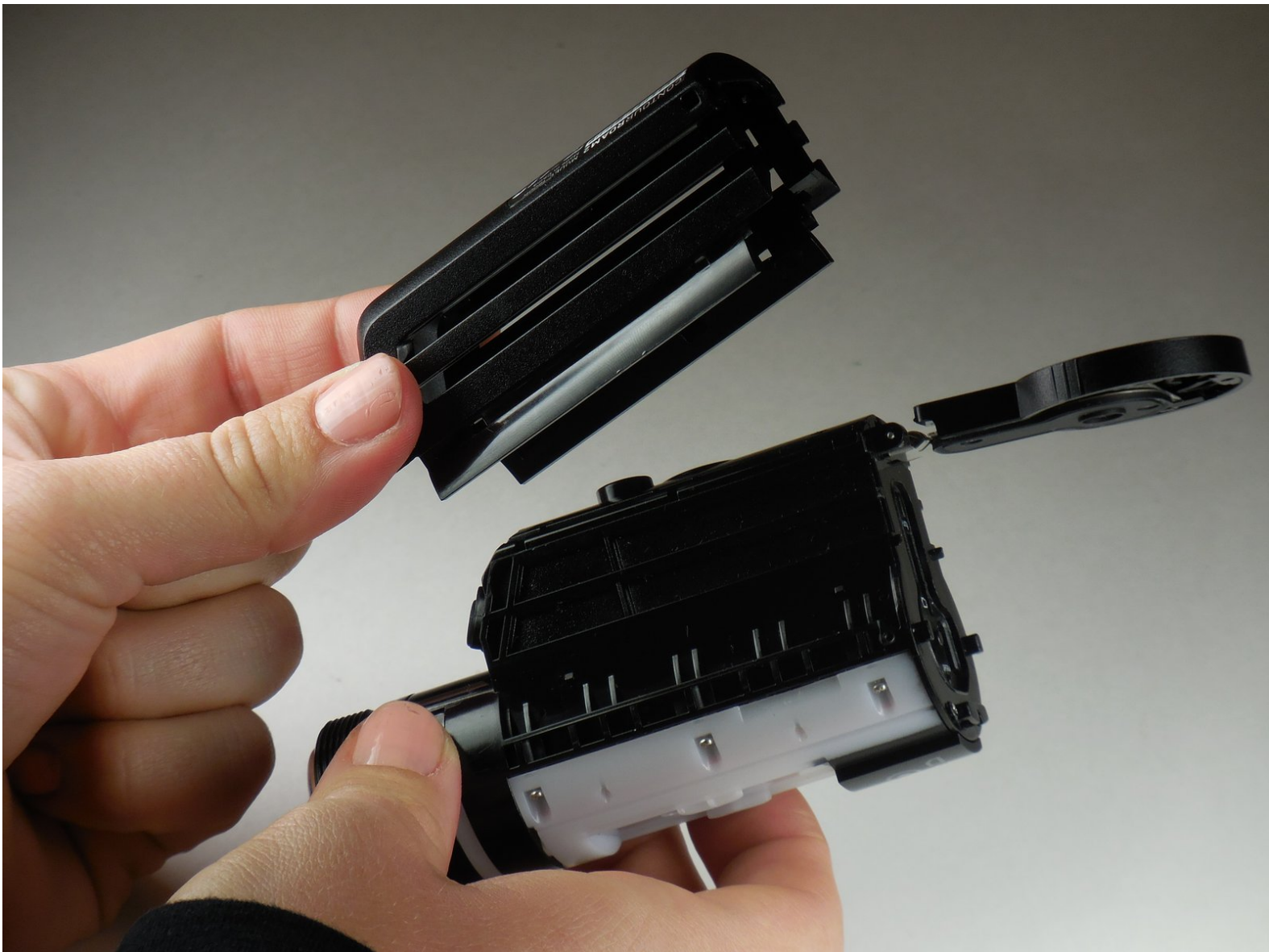




# Contour Roam2 Mounting Piece Replacement

This guide will show you how to replace the mounting piece on your Contour Roam2 waterproof action camera.

Written By: Matthew Kofsky



## INTRODUCTION

If the tripod mount has become stripped or the slots that the plastic mounts slide into become stripped, follow this guide on how to replace the mounting piece on your Contour Roam2.

---

### TOOLS:

- [Phillips #000 Screwdriver](#) (1)
  - [Metal Spudger](#) (1)
-

## Step 1 — Record Slider



- Using the phillips head screwdriver (PH000) locate and remove the 4.45mm (.175in) screw by the 180 degree graphic on the metal ring.

⚠ The screws in the camera are very small and can strip very easily. Apply consistent pressure when removing screws.

## Step 2



- Rotate the metal ring counterclockwise until completely removed.



### Step 3



- Using the phillips head screwdriver (PH000) remove the two 4.46mm (.175in) screws on each side near the back of the camera.

### Step 4



- Grab the camera on both sides and slide the outer shell forward until completely removed.

## Step 5



- Lift the record slider out.
- ⓘ The record slider should come out easily no matter the position (forward or backward).

## Step 6 — Mounting Piece



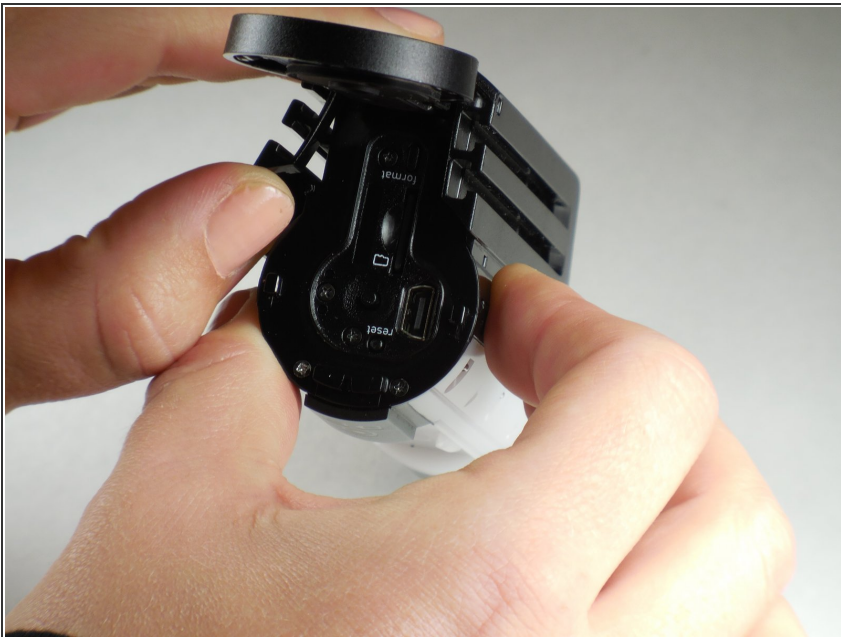
- Using the phillips head screwdriver (PH000) remove the two 3.82mm (0.150in) screws on the bottom of mounting piece near the tripod screw-in.
- ☑ The screws in the camera are very small and can strip very easily. Apply consistent pressure when removing screws.

## Step 7



- Open the back door by your thumb and index finger on sides of back door and pull upward.

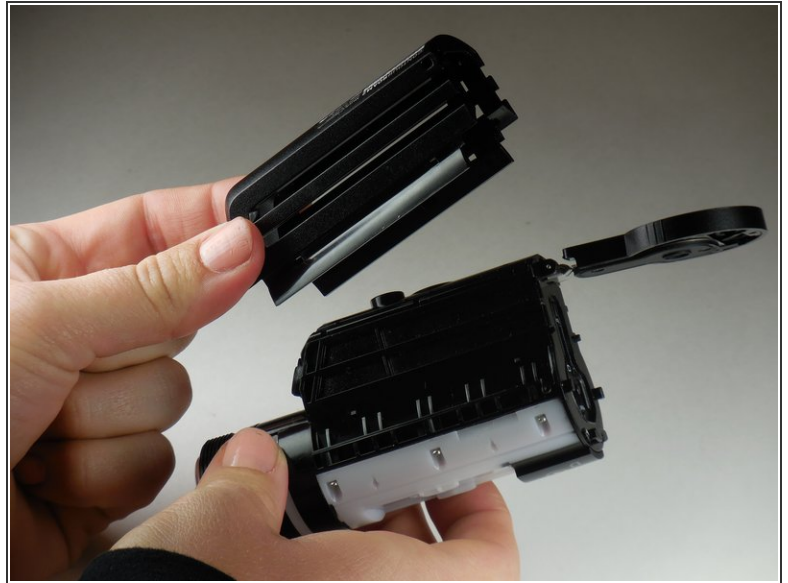
## Step 8



- Using your thumb, pry sides outward on back of mount piece.
- ⓘ This will loosen mount piece for removal in proceeding step.
- ⓘ Side can be hard to pry outward. Using a flat tool such as a metal spudger, may help if your thumb is insufficient.



## Step 9



- Remove and replace mount piece.

To reassemble your device, follow these instructions in reverse order.