



Coolpix S01 Battery Replacement

This guide will show you how to remove and replace your camera's battery.

Written By: Becca Hall



INTRODUCTION


Have you tried everything and your camera just won't turn on? No worries! This guide will show you how to successfully remove your battery.

TOOLS:

- [Phillips #000 Screwdriver](#) (1)
 - [iFixit Opening Tools](#) (1)
-

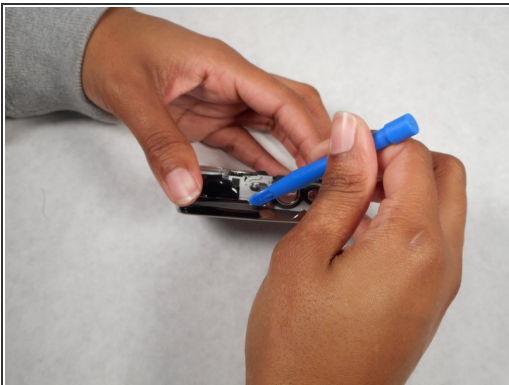
Step 1 — Battery



 Before starting, make sure the camera is powered off.

- Take the Hex and PH000 bit to remove a 2mm screw from the left side of the camera.
- Next, remove the 2mm screw from the right side.
- Lastly, remove the 3mm screw from the bottom of the camera.

Step 2



- Once the two 2mm screws and the 3 mm screw have been removed, use the smallest plastic opening tool and pull up on the sides to reveal the inside of the camera.
- Next, use the same small plastic opening tool and gently pull out the battery.
- To reassemble, follow the steps in reverse order.

To reassemble your device, follow these instructions in reverse order.

This document was generated on 2019-09-23 10:38:26 AM (MST).

