



# Copic Marker Nib Replacement

Replacing the nib of a copic pen marker

Written By: Iris Lin



## INTRODUCTION

Tired of buying new Copic Markers? Wish you could just simply replace the nib? Well, this is the guide for you!

After using a Copic Marker for a long period of time and the nib begins to curl and fray, it is time to replace it. The ink also should be refilled simultaneously at this point as it is running low. The only tools needed to complete this guide are some paper towels and a pair of tweezers!



### TOOLS:

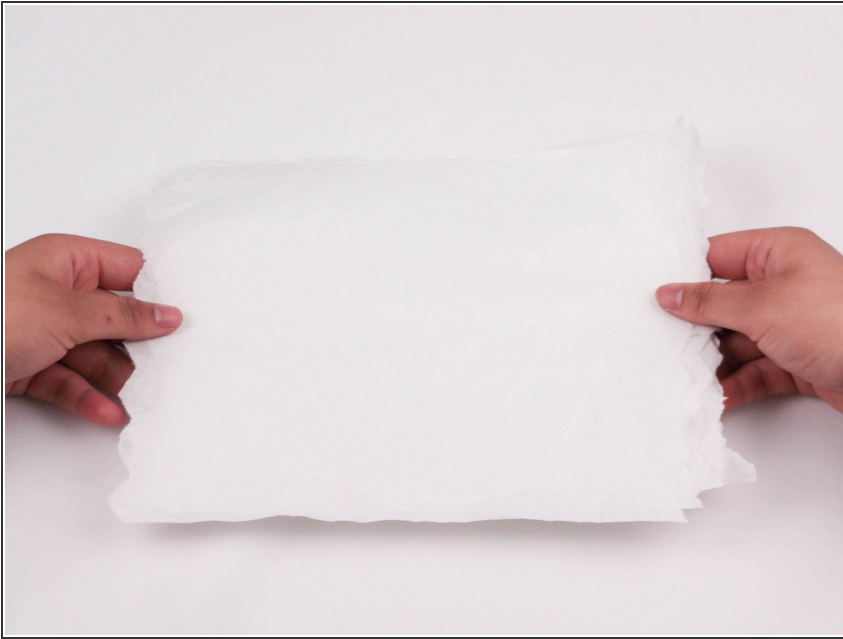
- [Tweezers](#) (1)
- [Paper Towels](#) (1)



### PARTS:

- [Copic Marker Nib](#) (1)
- [Copic Marker Ink Refill](#) (1)

## Step 1 — Copic Marker Nib



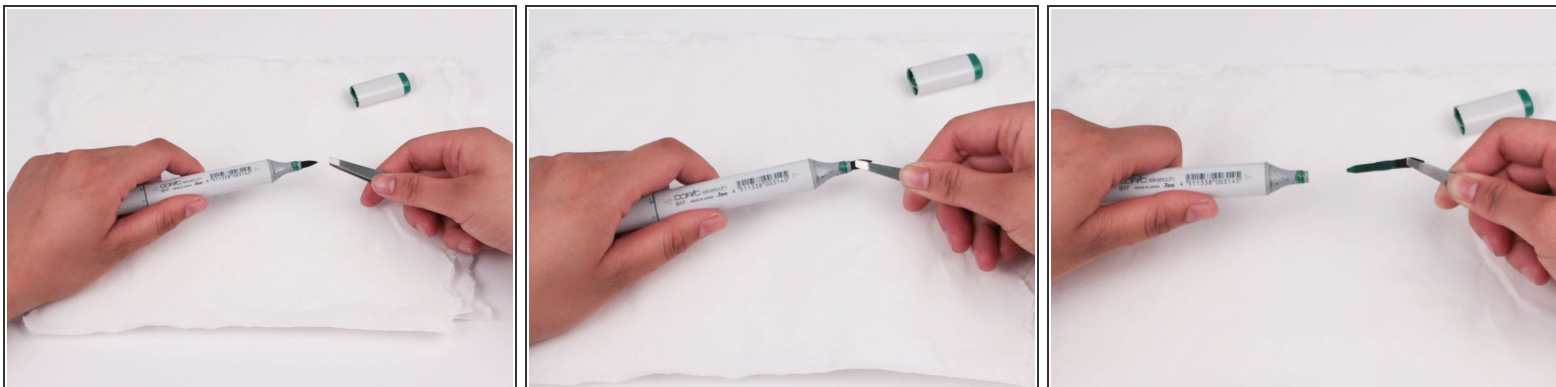
- ⚠ Place a few paper towels on the surface of your workspace to protect it from ink spills.

## Step 2



- Remove the cap from the marker to expose the nib.

## Step 3



- Gently tug out the thicker part of the nib with the tweezers.

## Step 4

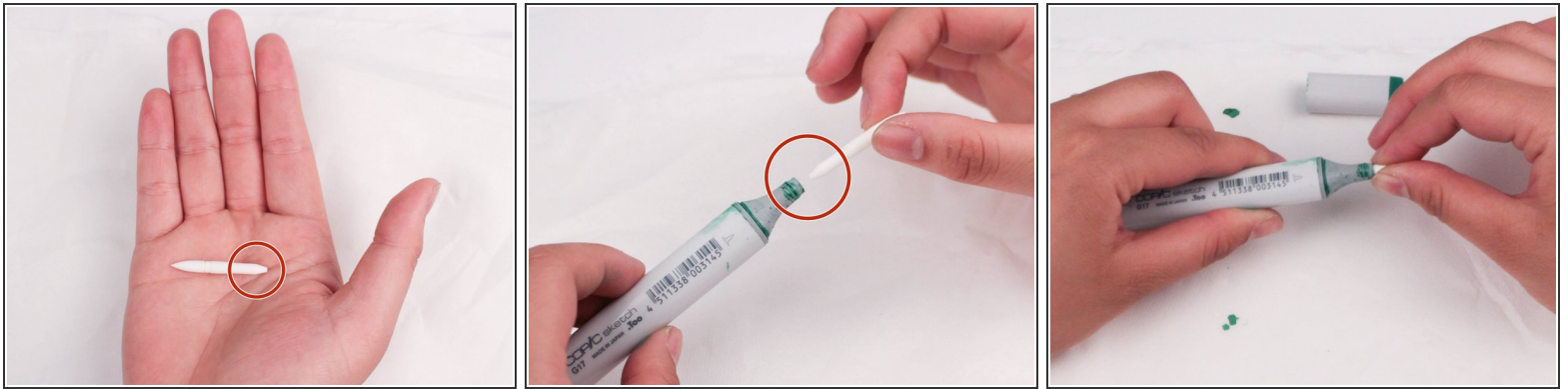


- Remove the cap of the ink bottle and tilt the container to begin filling the marker.

- ⚠ Avoid forcibly squeezing the ink bottle.
- ⚠ Slowly fill the pen until it is approximately 3/4ths of the way full.

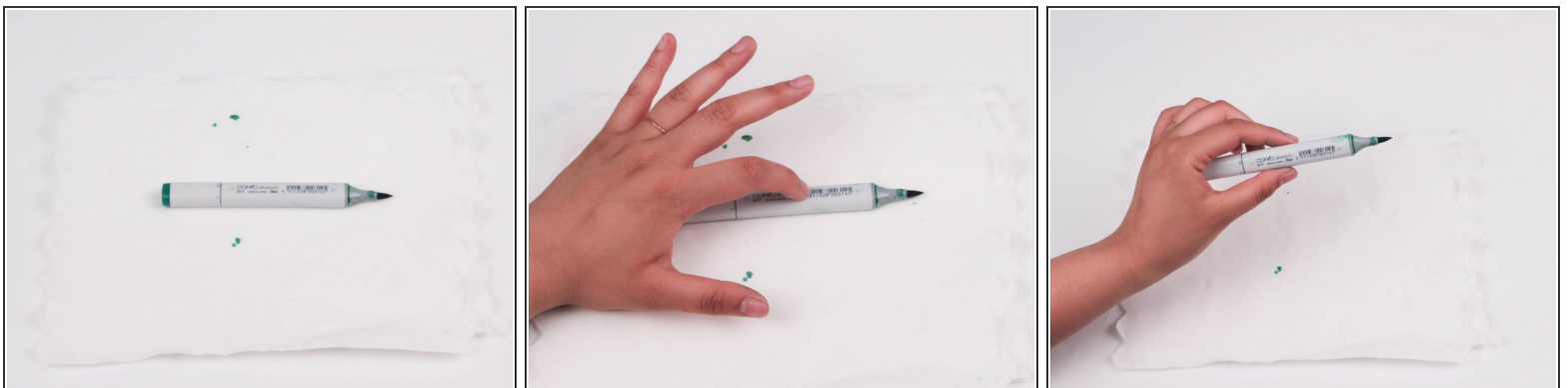


## Step 5



- Insert the flat side of the new nib facing the opening of the marker until it snaps into place.
- Set the marker down after replacing new nib.

## Step 6



- Wait 3 minutes for the color to spread through the nib until it is no longer white.
- Press on the middle of the marker 3 times to insure ink is spread throughout.
- ⓘ Repeat steps 3 - 5 if the amount of ink is insufficient.