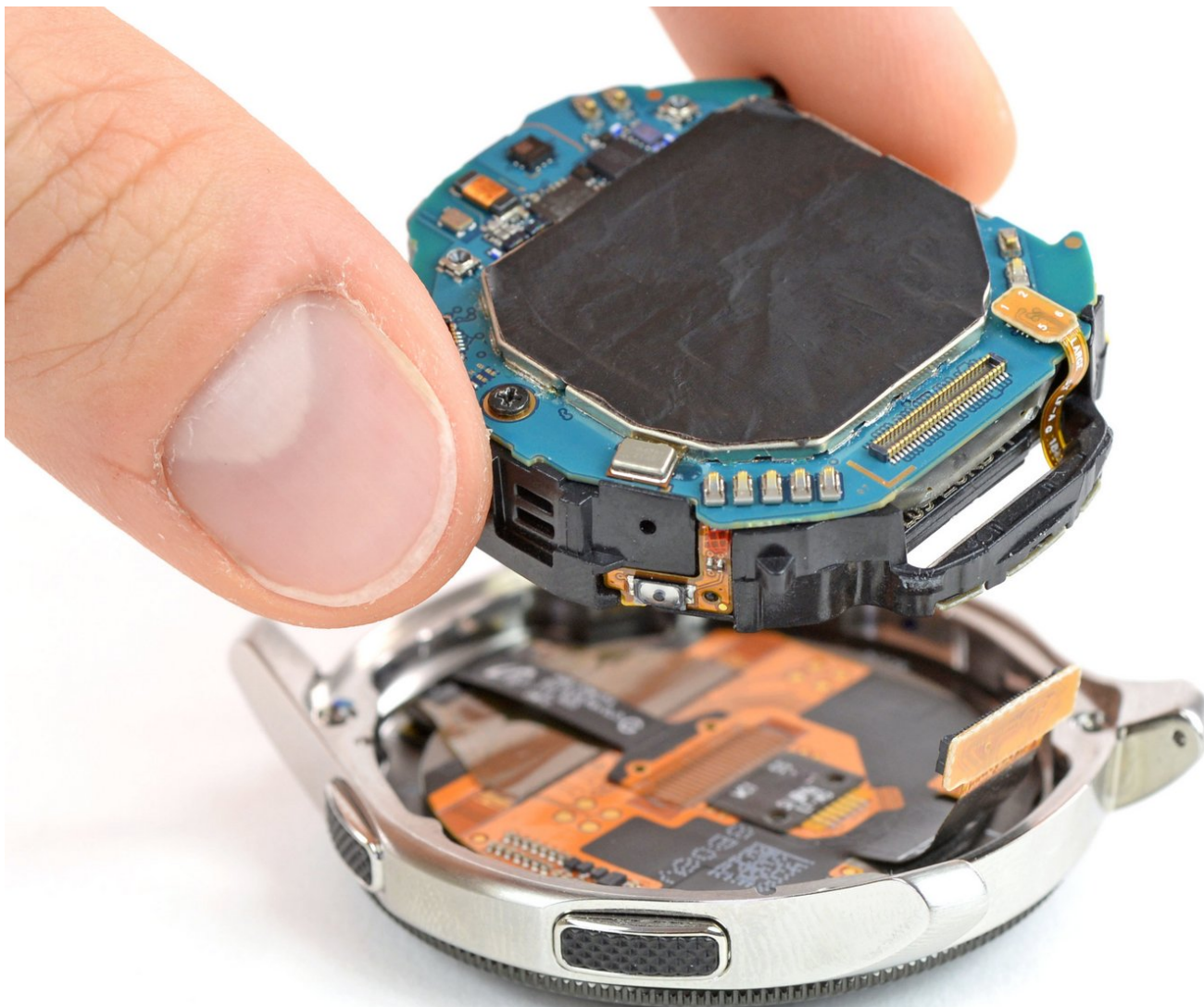




Core Assembly Removal

This guide shows how to remove the core assembly in the Samsung Galaxy Watch.

Written By: Tobias Isakeit



INTRODUCTION

Use this guide to remove the core assembly in the Samsung Galaxy Watch.



TOOLS:

- [Tri-point Y00 Screwdriver Bit](#) (1)
 - [iFixit Opening Tools](#) (1)
 - [Spudger](#) (1)
-

Step 1 — Opening Procedure




- Remove the four Tri-point #00 screws (4.2 mm length) on the backside of the watch.

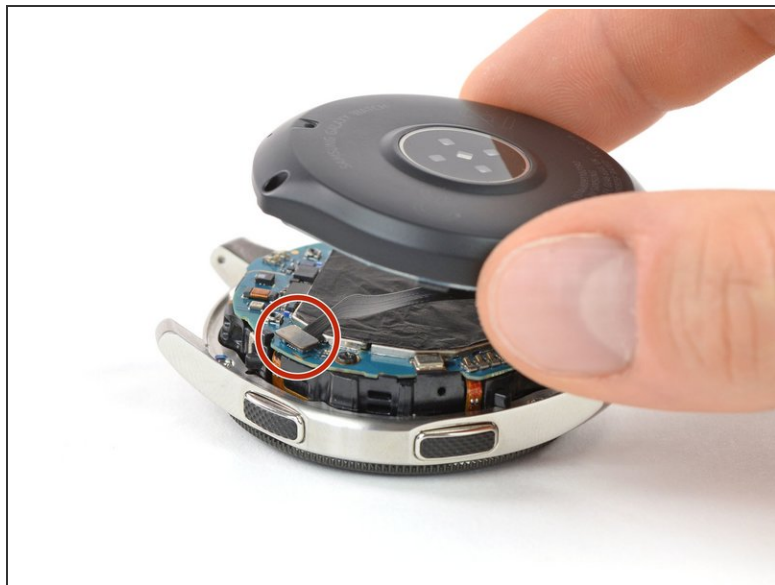
Step 2



- Use an opening tool to get between the back cover and the metal housing of the watch.
- Carefully pry the plastic back cover open.

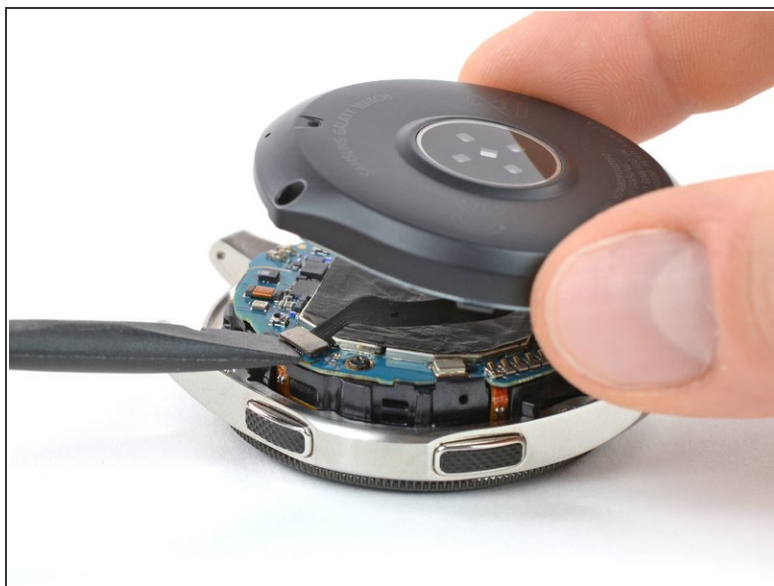
 Don't remove the back cover yet. There is a flex cable running to the core assembly inside.

Step 3



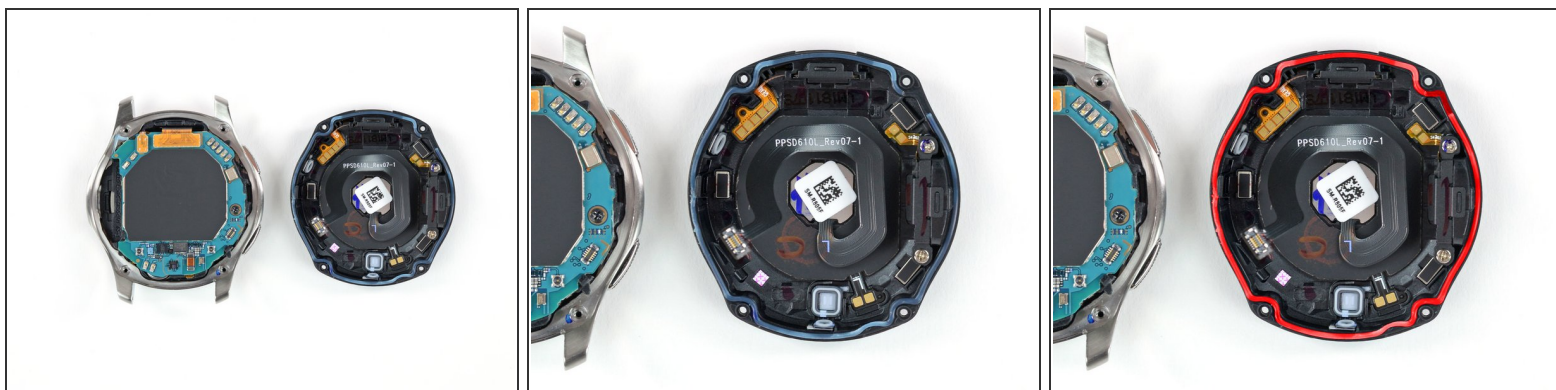
- Lay down the watch and lift the back cover to access the sensor connector on the motherboard.

Step 4



- Use a spudger to disconnect the sensor flex cable from the motherboard.

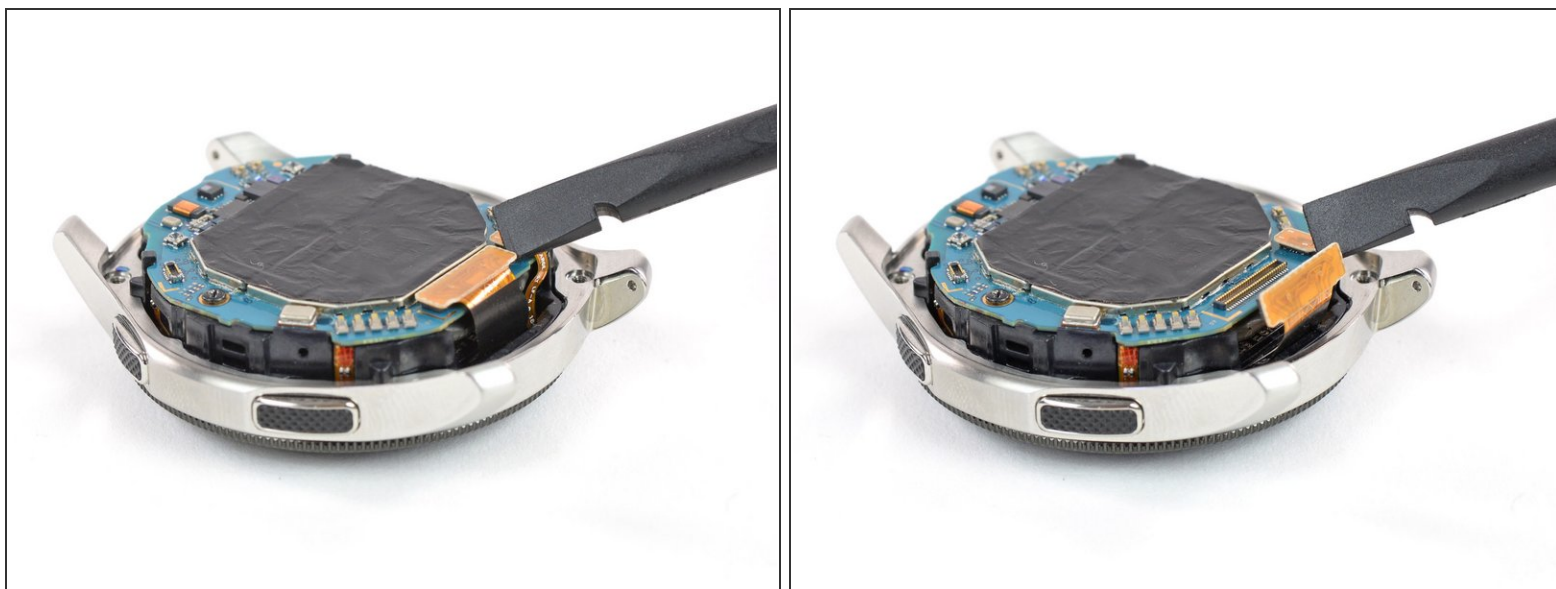
Step 5



- Remove the back cover.

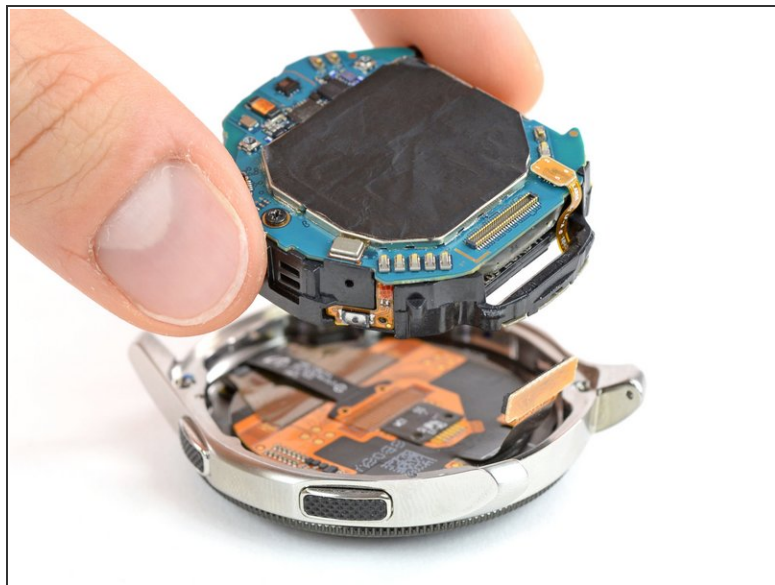
✦ When closing the watch make sure the rubber gasket is undamaged or replace it with a new one.

Step 6 — Core Assembly Removal



- Use a spudger to disconnect the display flex cable from the motherboard.

Step 7



- Lift the core unit out of the housing.
 - ⓘ The core's plastic frame sits tight inside the housing.
 - ⚠ Carefully thread the display flex cable through the gap of the core's plastic frame.

To reassemble your device, follow these instructions in reverse order.