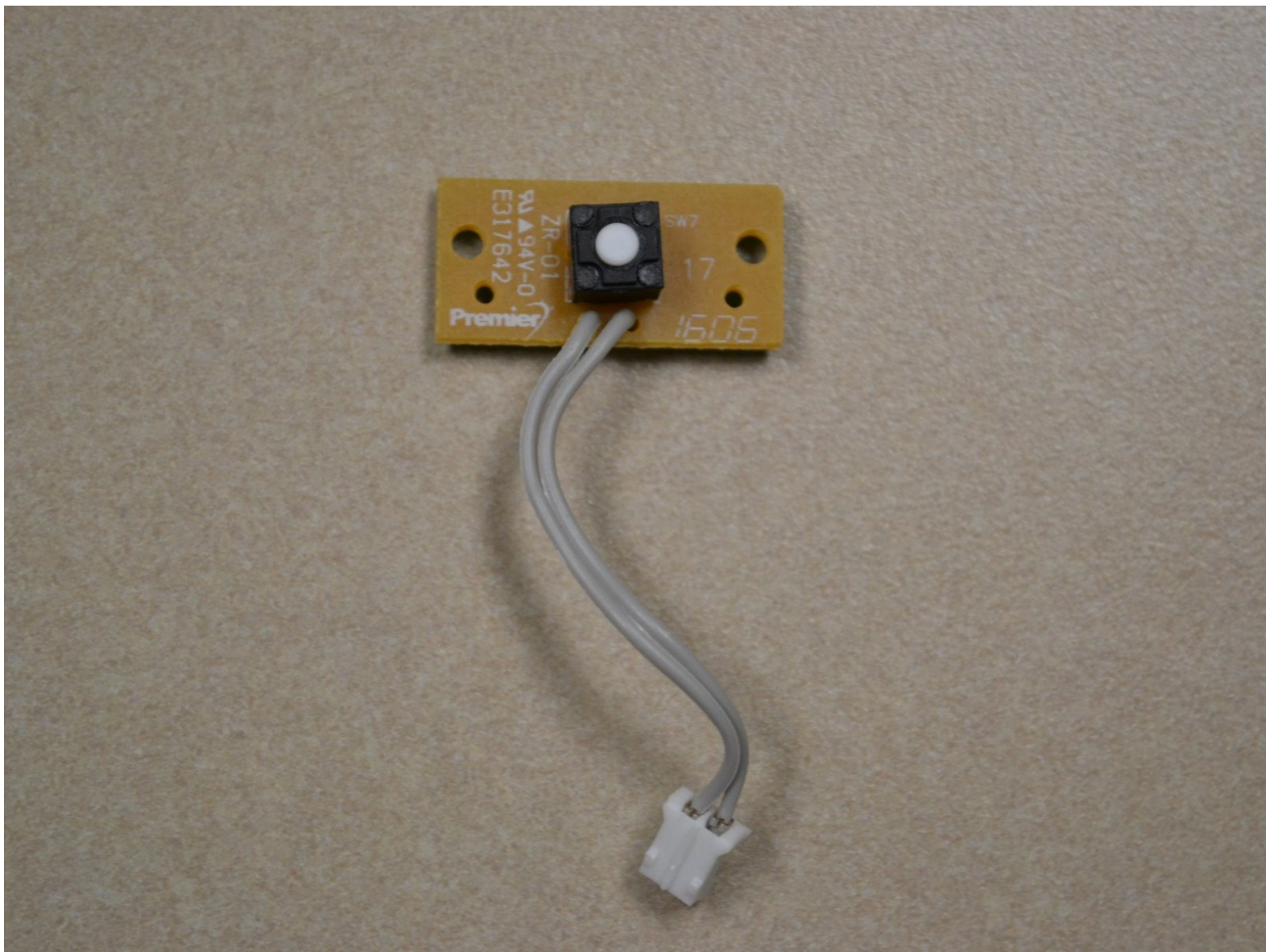




# Corsair Katar DPI Sensor Replacement

This guide will show how to replace the DPI sensor in a Corsair Katar mouse.

Written By: Margaret Loughren



## INTRODUCTION

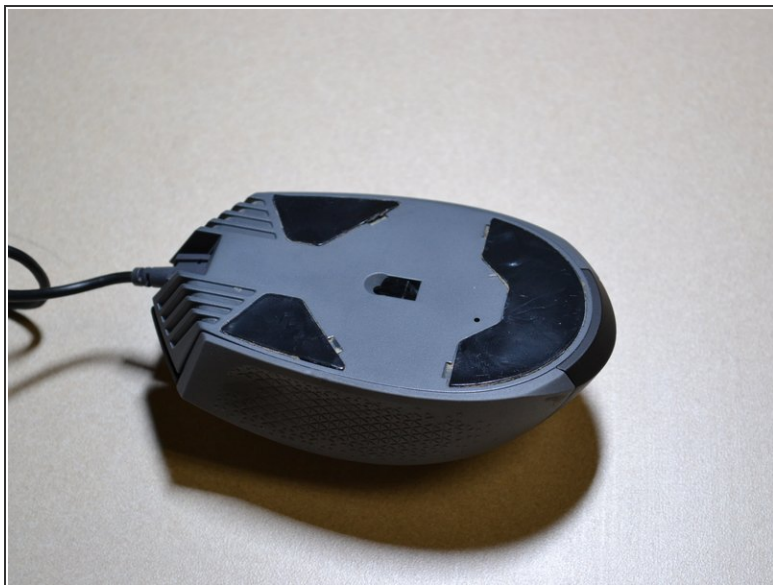
If the DPI (dots per inch) sensor inside your Corsair Katar mouse is not operating correctly, this guide will show you how to replace it.



### TOOLS:

- [JIS #0 Screwdriver](#) (1)
  - [iFixit Opening Tools](#) (1)
-

## Step 1 — Corsair Katar Disassembly



⚠ Unplug your mouse before starting.

- Flip the mouse over so the bottom is facing up.

## Step 2

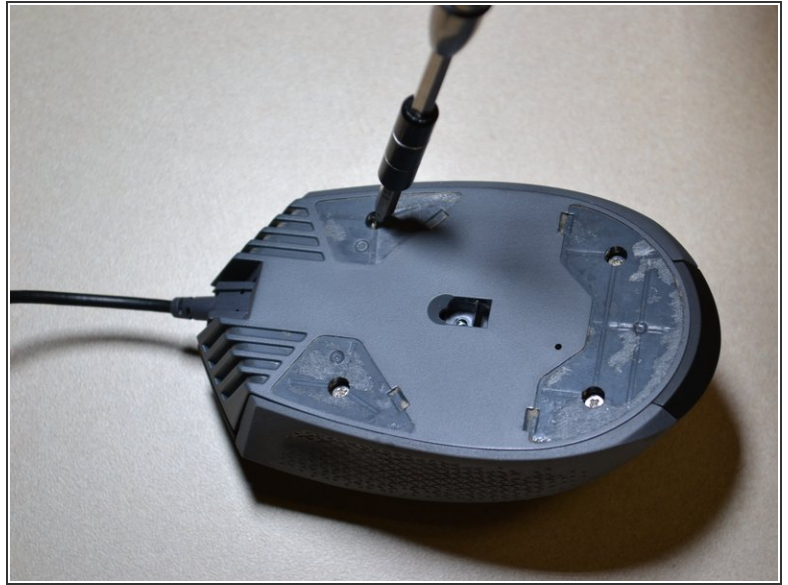
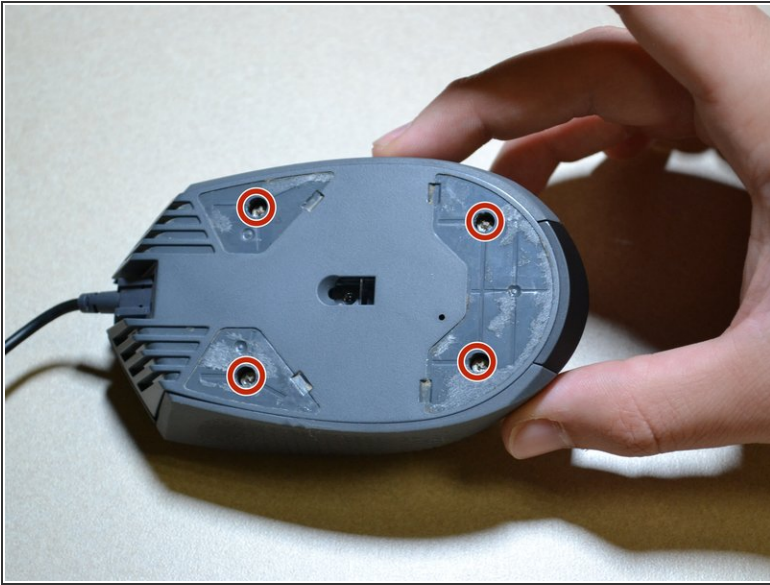


- Remove the three skates on the bottom of the mouse using the plastic opening tools.

ⓘ Skates will be very sticky.

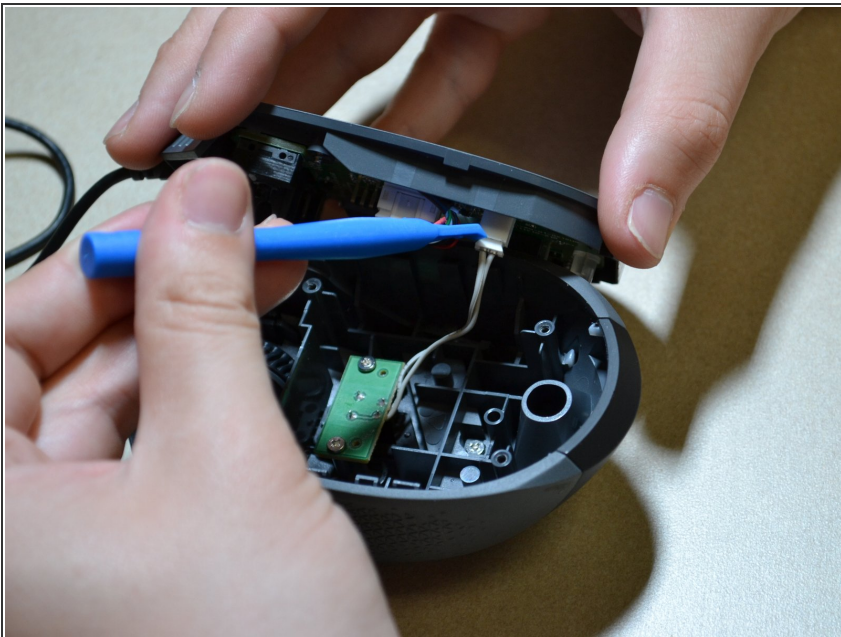


### Step 3



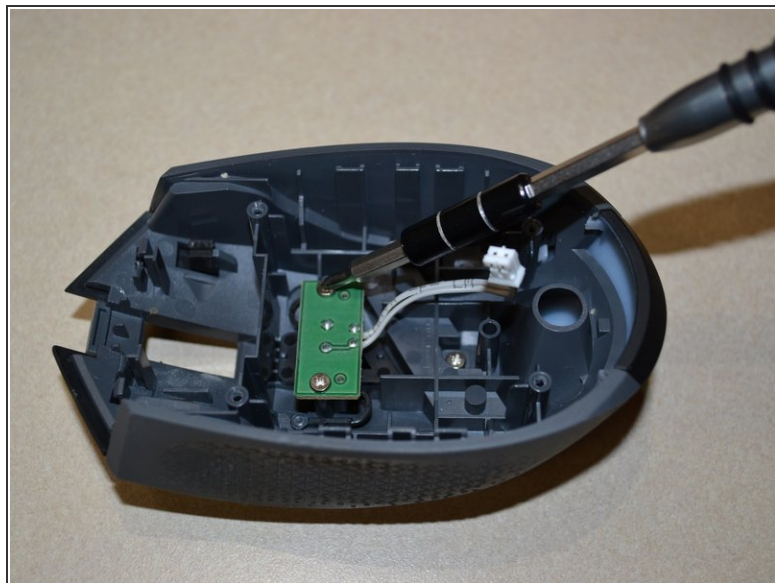
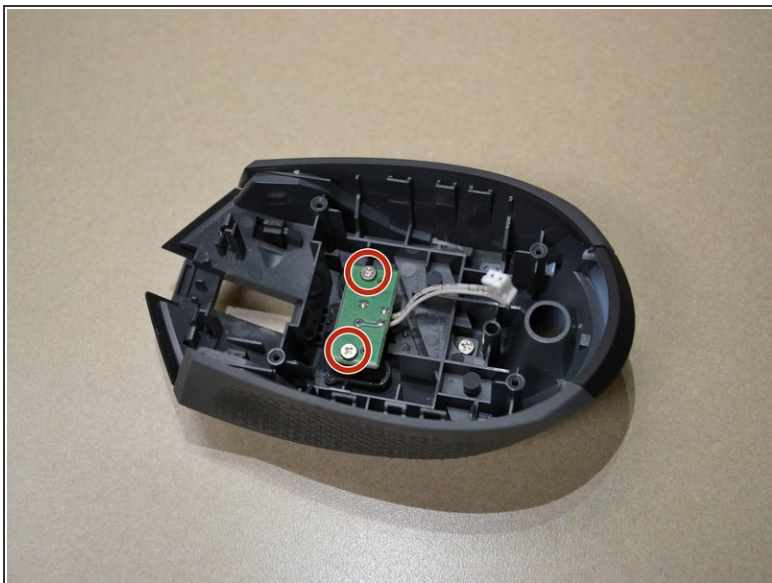
- Use the JIS 0 screwdriver to remove the four 5 mm screws on the bottom of the mouse.

### Step 4



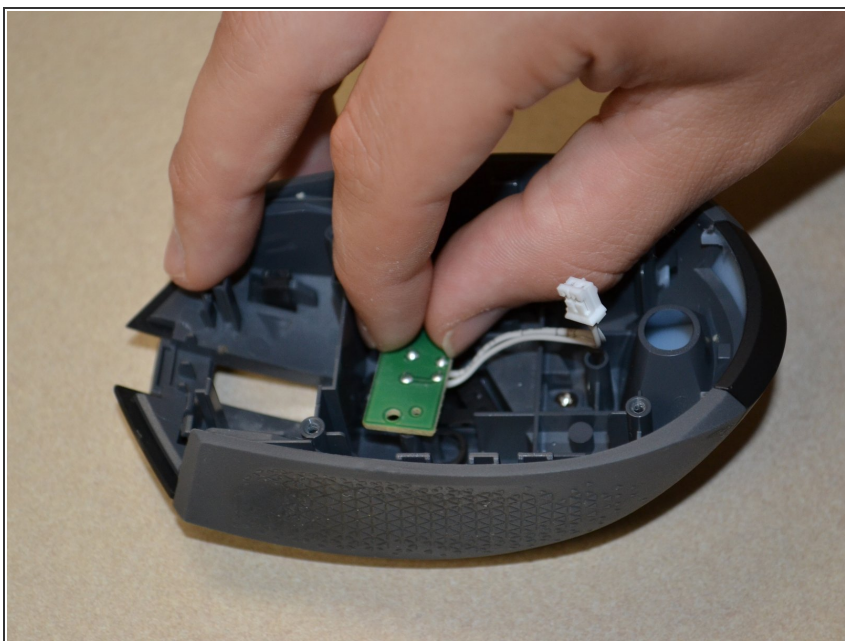
- Detach the bottom of the mouse from the upper shell.
- ⚠ Remove the shell slowly so as not to damage the white DPI cable inside the mouse.
- Use the plastic opening tool to detach the white DPI sensor cable from its port.
- ⓘ Alternatively, you can use your hand to remove the DPI sensor cable by wiggling it out of the port.

## Step 5 — DPI Sensor



- Use the JIS 0 screwdriver to remove the two 5mm screws holding the DPI sensor.

## Step 6



- Lift the DPI sensor away from the mouse shell.

To reassemble your device, follow these instructions in reverse order.