



Corsair Void Pro RGB Volume Switch Replacement

This guide illustrates how to replace the volume switch on the left side of the speakers of your Corsair Void Pro RGB.

Written By: Gianna Nobili



INTRODUCTION

Learn how to replace the volume switch by following these steps. Replacing the volume switch does not involve many technical operations.

All steps for replacing the volume switch should be applied to the lefthand earcup..



TOOLS:

- [iFixit Opening Tools](#) (1)
 - [Phillips #0 Screwdriver](#) (1)
 - [T5 Torx Screwdriver](#) (1)
-

Step 1 — Earcup



- Carefully remove earmuff from headphones by getting a grip under the earmuff cushion and peeling up over the lip that keeps it in place.

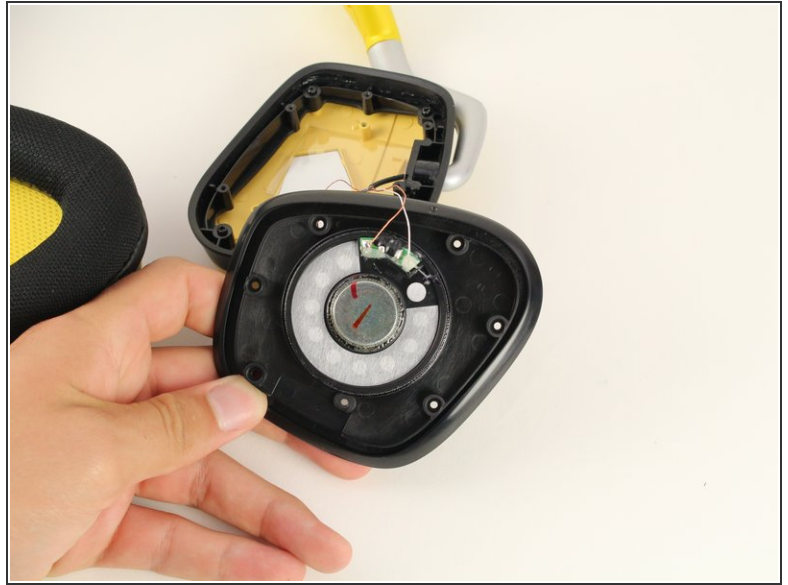
Step 2



- Using the Phillips #0 screwdriver, unscrew the seven 6.4 mm screws holding the black speaker cover in place.

i If you are disassembling the lefthand earmuff, there will be eight 6.4 mm screws to remove.

Step 3



- Remove and set aside the black panel, taking care to keep the wires attached.
- ⓘ The panel should lift up without much force. If the panel does not budge, carefully use the iFixit plastic opening tool to dislodge the piece.

Step 4 — Volume Switch



- Using the Phillips #0 screwdriver, remove the three 6.4 mm screws on the black plastic panel with the grid of holes.

Step 5



- Pull the volume switch out and remove it from the device.

To reassemble your device, follow these instructions in reverse order.