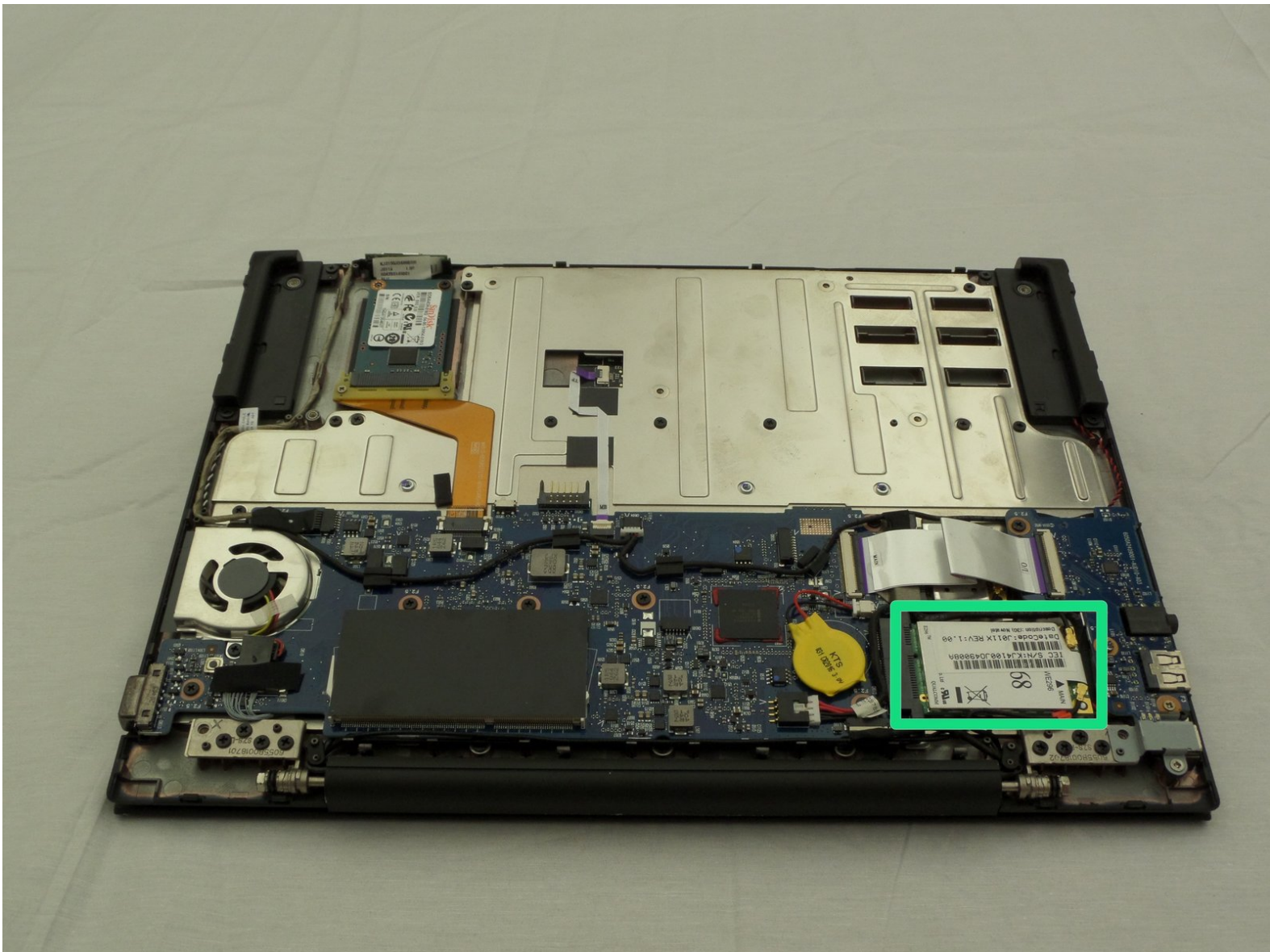




# Cr-48 Chromebook Network Card Replacement

Use this guide to remove and replace your network card.

Written By: Robert McLaughlin



# INTRODUCTION

The Cr-48 Chromebook shipped with a combined Wi-Fi / Cellular network card that can be easily removed and replaced if necessary. Use this guide to replace a malfunctioning network card in a Cr-48 Chromebook.



## TOOLS:

- [Phillips #00 Screwdriver](#) (1)
  - [Tweezers](#) (1)
-

## Step 1 — Remove the Battery



- Slide the switch on the bottom of the laptop until the battery pops out.
- Once the battery pops out, you can remove it.

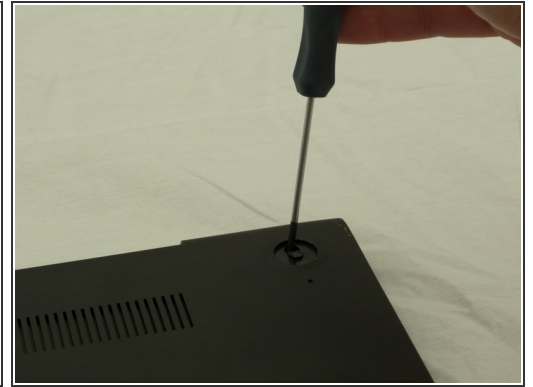
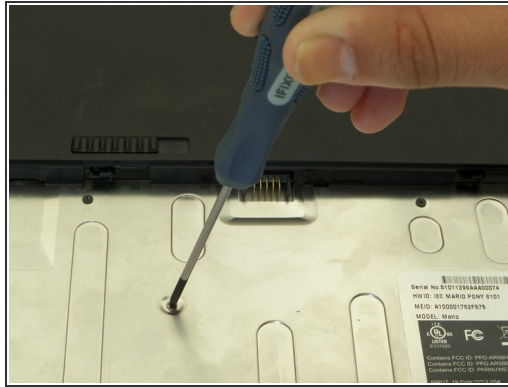
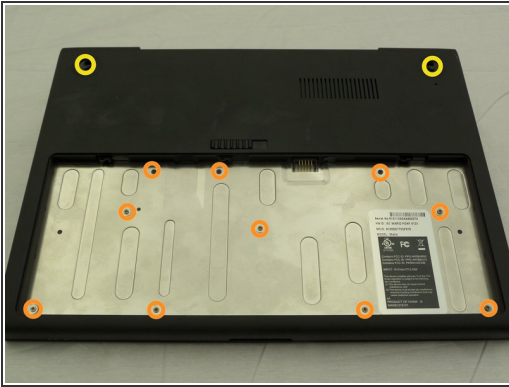
## Step 2 — Remove Rear Rubber Feet



- Using forceps or tweezers, remove the two rear rubber feet to expose two hidden screws.

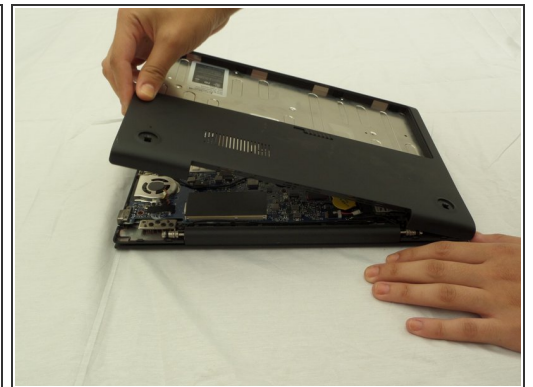
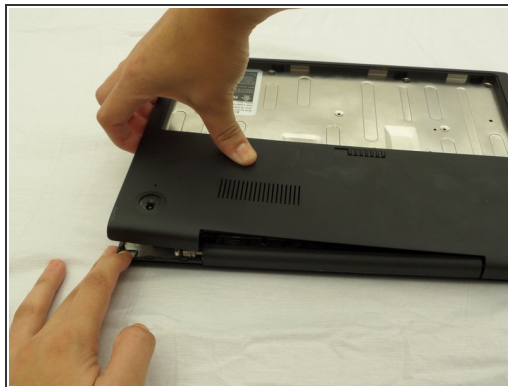
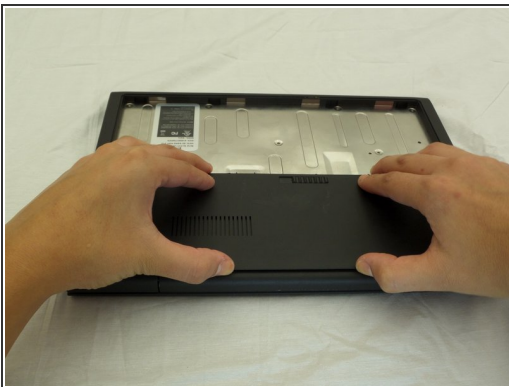


### Step 3 — Remove Screws



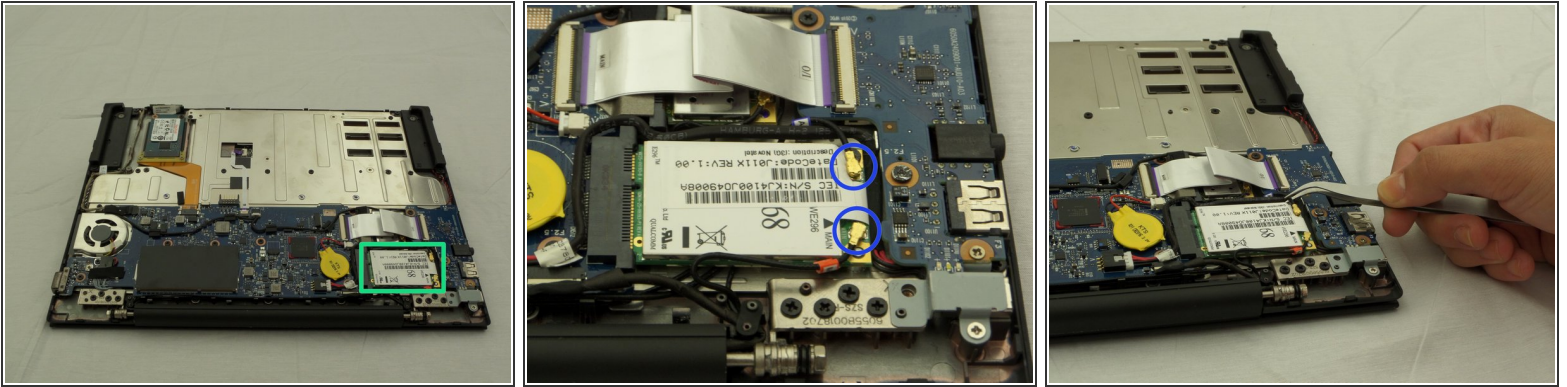
- Using a Phillips head #00 Screwdriver, remove a total of 12 screws:
  - 10 screws in the battery compartment.
    - size ph#00, approximately 3 mm long
  - 2 screws under the rubber feet previously removed
    - Size ph#00, approximately 4.5 mm long

### Step 4



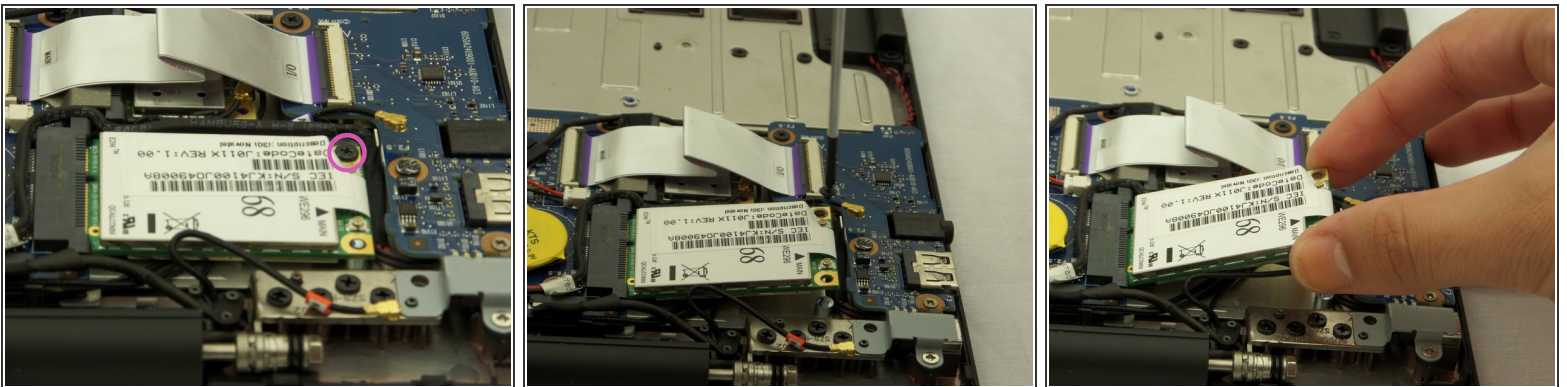
- Starting where the body of the laptop and the laptop screen meet, pry apart the lower case from the rest of the laptop.
- ⓘ The case is easier to remove when separating in a clockwise motion, as seen in the pictures.

## Step 5 — Identify the Network Card and Remove the Connectors



- Once you've removed the lower case, you should see the network card on the corner of the device containing the USB port.
- Disconnect the Wire connections on the network card using forceps or tweezers.

## Step 6 — Unscrew and Remove Network Card



- Remove Screw securing network card.
  - Size ph#00, approximately 3 mm long.
- ⓘ Once the screw is removed, the network card will pop up.
- Pull the network card to remove it from the device.

To reassemble your device, follow these instructions in reverse order.