



# Cr-48 Chromebook SSD Replacement

Replace the Cr-48's internal mSATA SSD.

Written By: Athar



---

## INTRODUCTION

Before starting, please:

- make sure nothing is attached (such as AC adapter, USB, VGA, audio jack).
- remove any inserted SD card.



### TOOLS:

- [Phillips #00 Screwdriver](#) (1)
  - [Tweezers](#) (1)
-

## Step 1 — Remove the Battery



- Slide the switch on the bottom of the laptop until the battery pops out.
- Once the battery pops out, you can remove it.

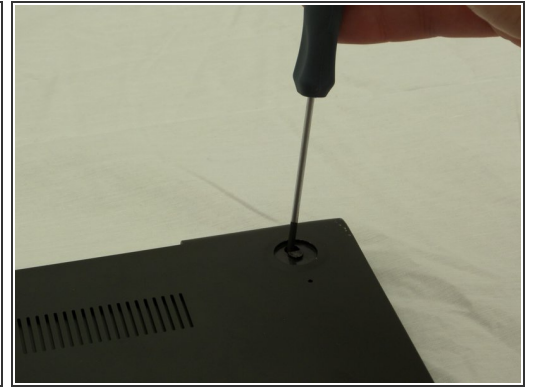
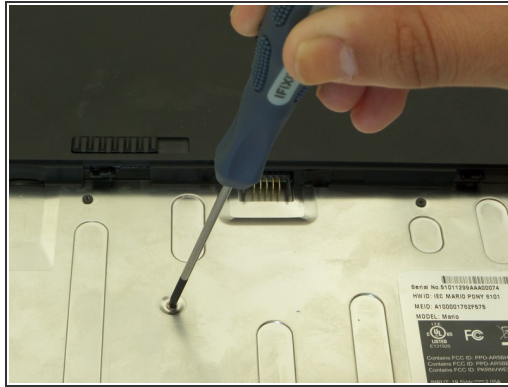
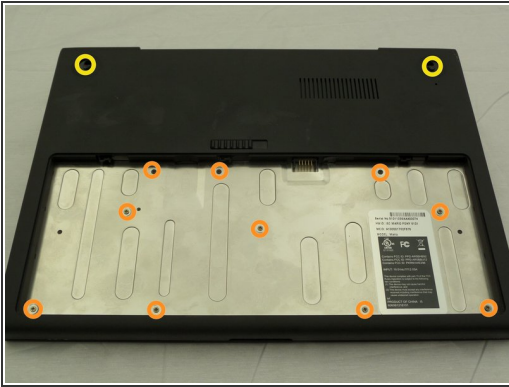
## Step 2 — Remove Rear Rubber Feet



- Using forceps or tweezers, remove the two rear rubber feet to expose two hidden screws.

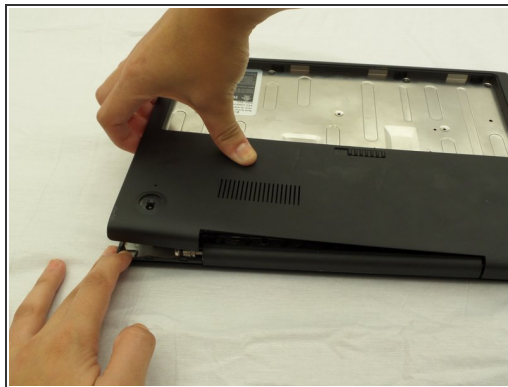
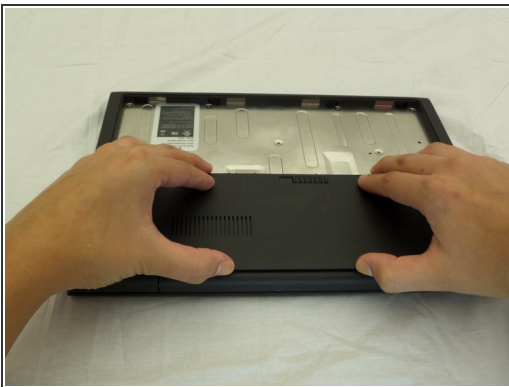


## Step 3 — Remove Screws



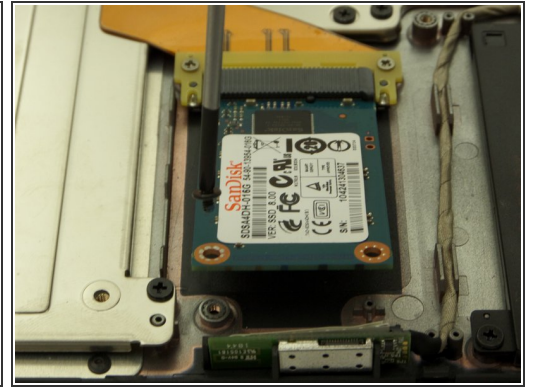
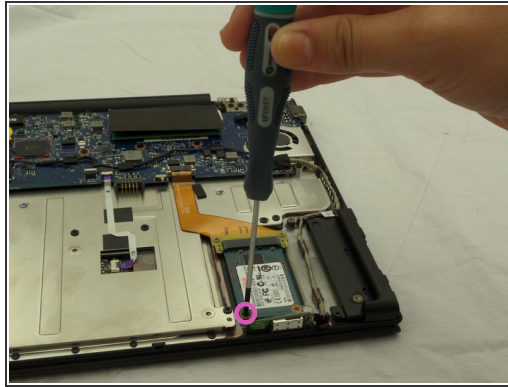
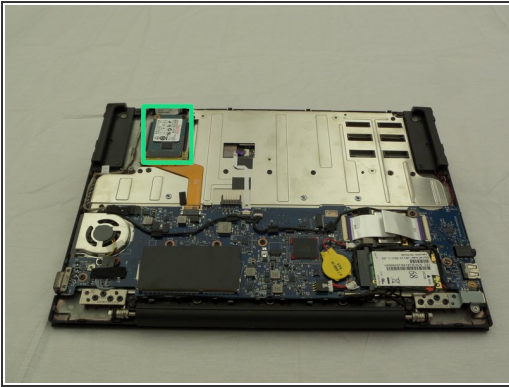
- Using a Phillips head #00 Screwdriver, remove a total of 12 screws:
  - 10 screws in the battery compartment.
    - size ph#00, approximately 3 mm long
  - 2 screws under the rubber feet previously removed
    - Size ph#00, approximately 4.5 mm long

## Step 4



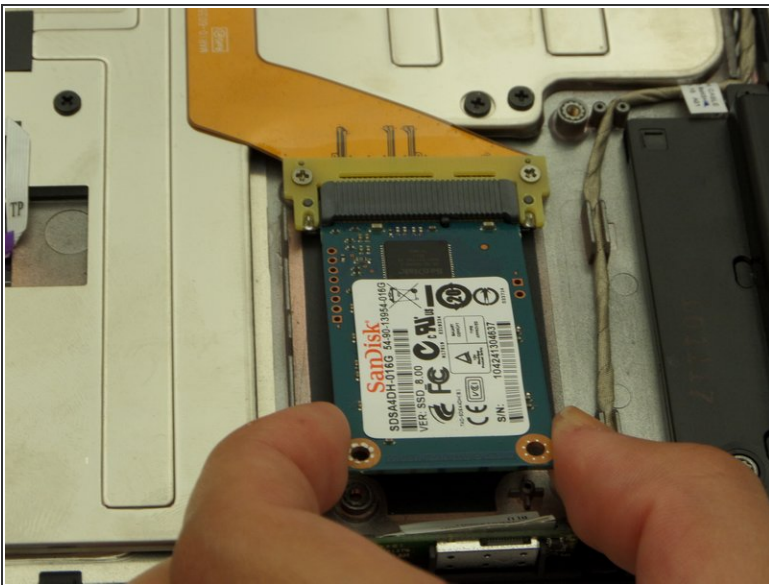
- Starting where the body of the laptop and the laptop screen meet, pry apart the lower case from the rest of the laptop.
- ⓘ The case is easier to remove when separating in a clockwise motion, as seen in the pictures.

## Step 5 — Locate SSD and Remove Screw



- Find the SSD located on a corner of the side directly opposite where the laptop screen and device body are connected.
- Remove one black screw on the SSD using a PH #00 screwdriver.
  - Size ph#00, approximately 3 mm long.
- ⓘ Once unscrewed, the SSD will pop up from the device.

## Step 6 — Remove SSD



- Firmly grasp the SSD with two fingers slightly upwards and pull.

To reassemble your device, follow these instructions in reverse order.