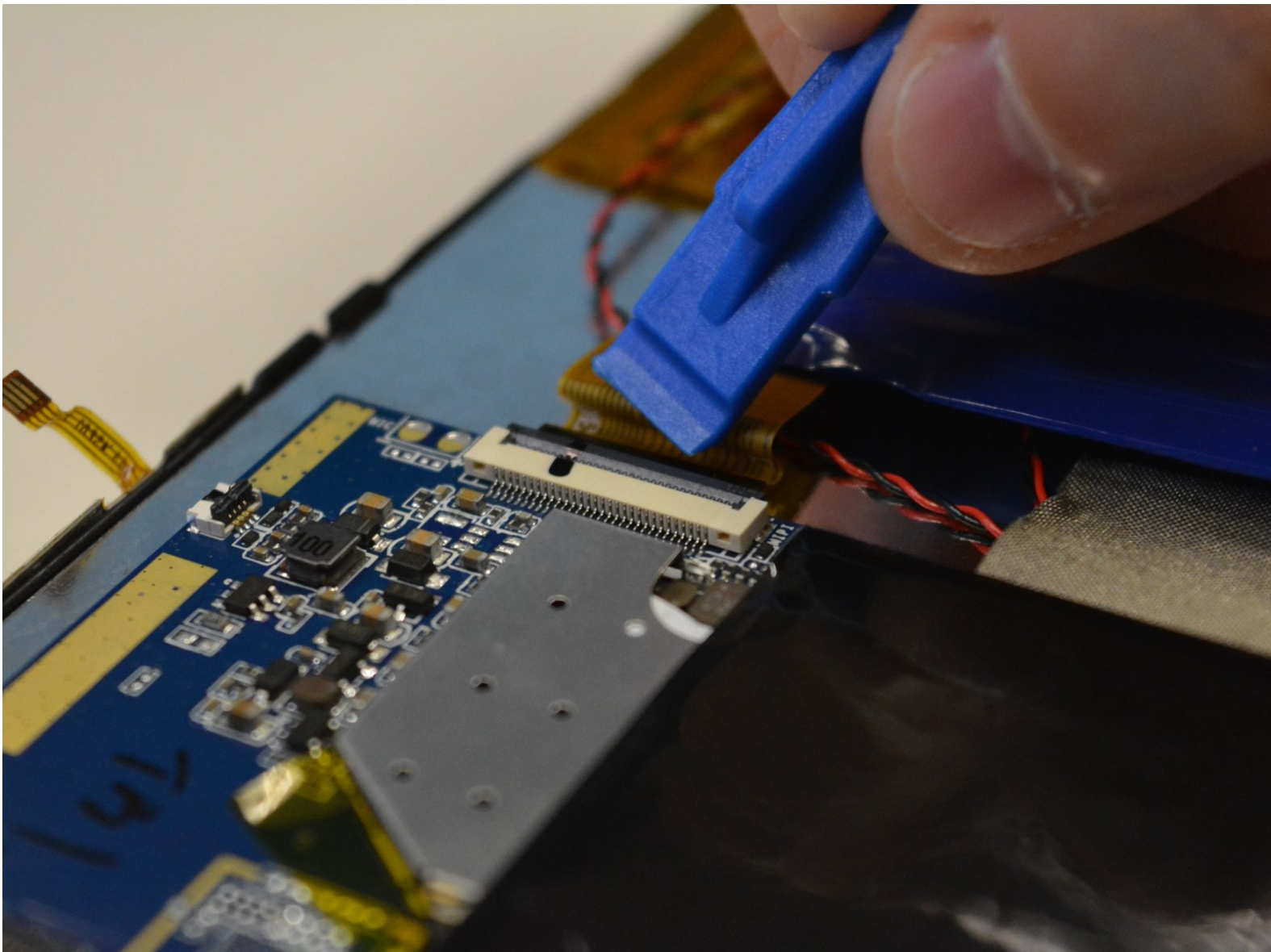




# Craig CMP801 LCD Screen Replacement

This guide will teach you how to replace the LCD screen for the Craig CMP801 tablet.

Written By: Anh



# INTRODUCTION

In order to replace the LCD screen you must remove all the other parts, starting from the back panel.



## TOOLS:

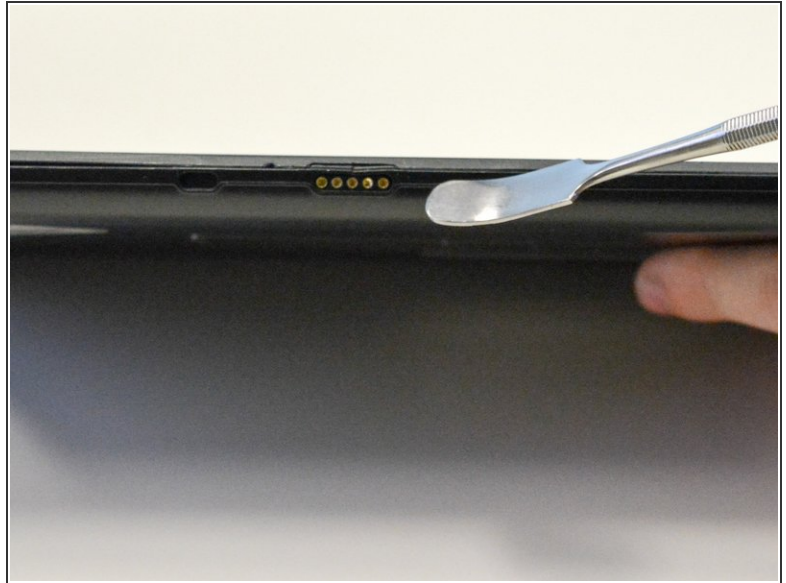
- [Precision Tweezers Set](#) (1)  
Angled tweezers
- [iFixit Opening Tools](#) (1)
- [Phillips #0 Screwdriver](#) (1)



## PARTS:

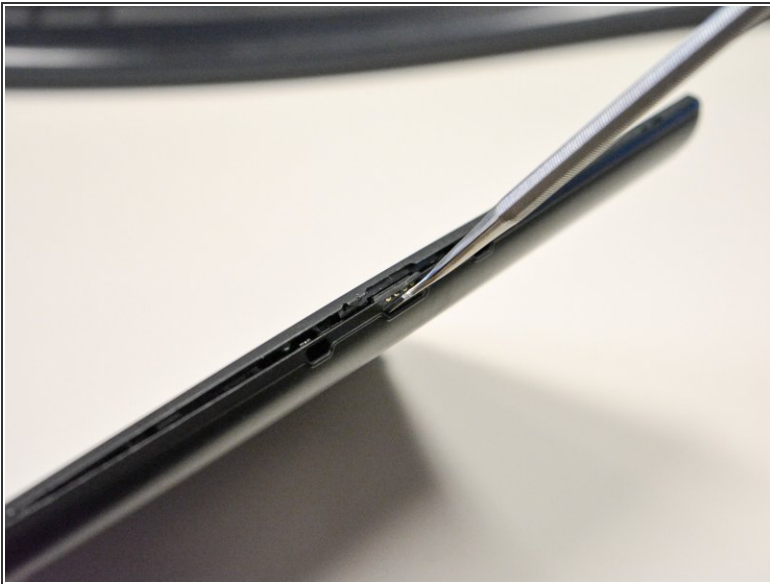
- [LCD Screen for Craig CMP801](#) (1)

## Step 1 — Back Cover



- Locate the opening line between the cover and the device. Then locate the groove near the charging port.

## Step 2



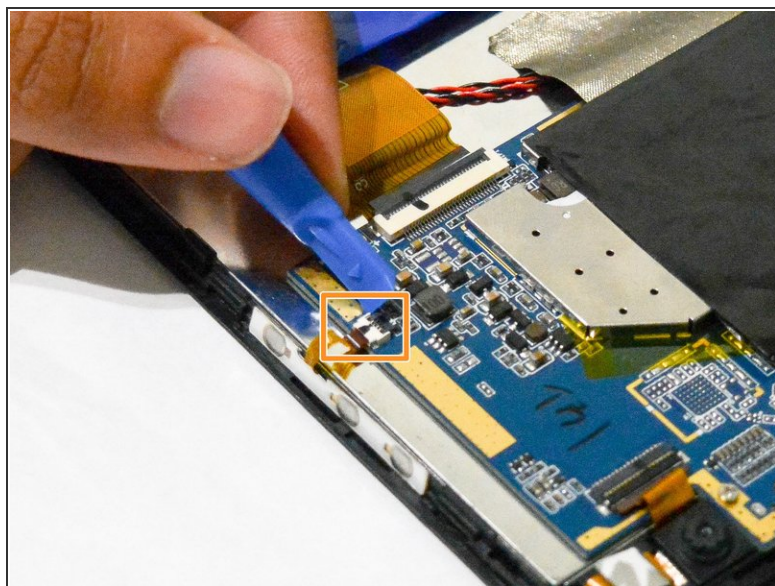
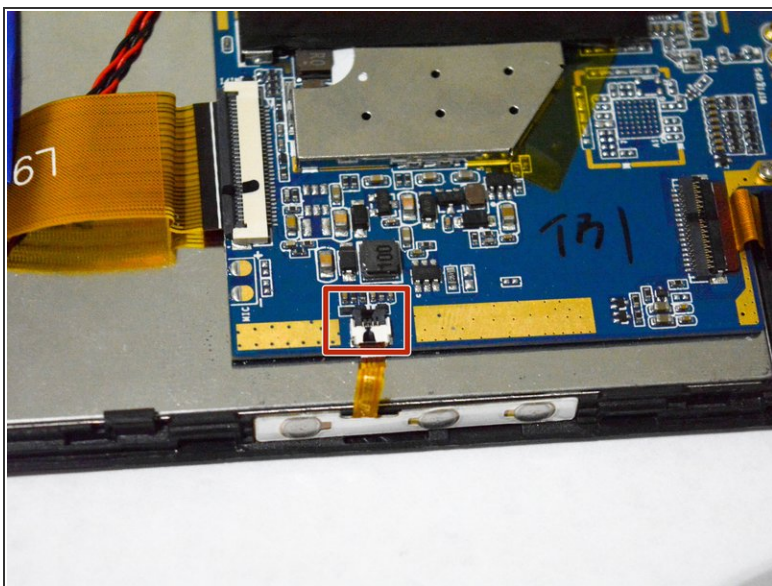
- Use a metal spudger to separate the back cover from the front touch screen.
- To do this, place the metal spudger in between the groove near the charging port of the device to unlatch the first clip.

### Step 3



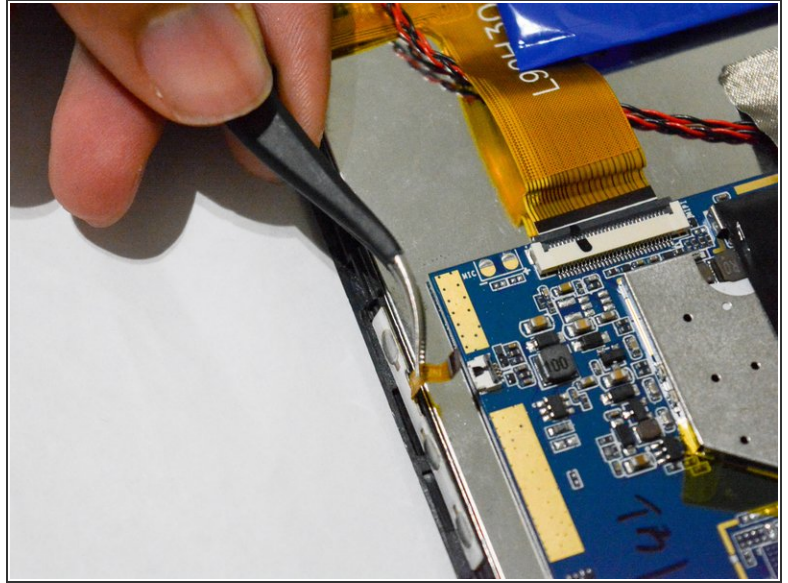
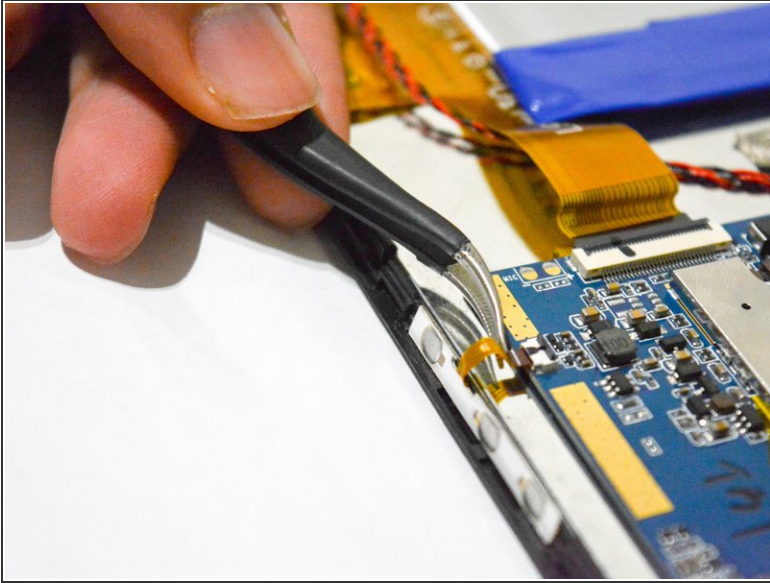
- Continue to separate all of the clips around the device until the back cover comes off completely.

### Step 4 — Volume Controls



- After taking out the back cover, locate the black flap.
- Open the black flap with the plastic opening tools.
- ⚠ Be careful not to break the flap when you open it.

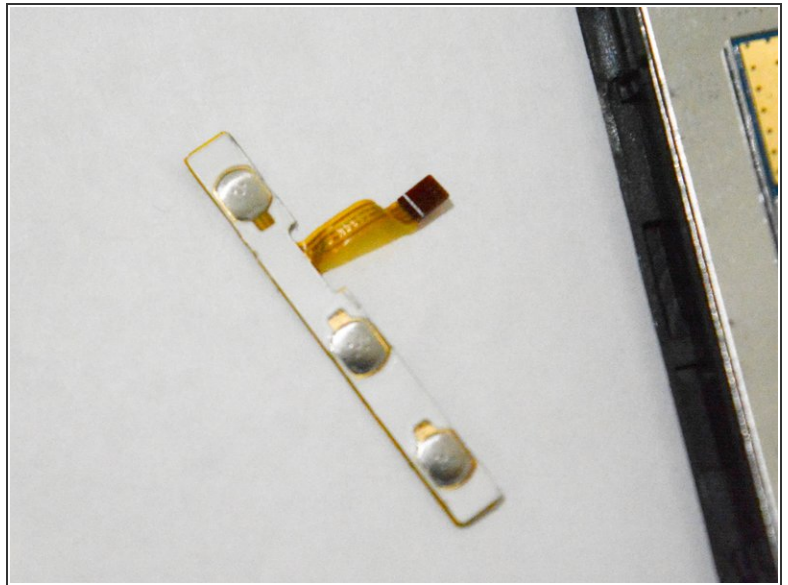
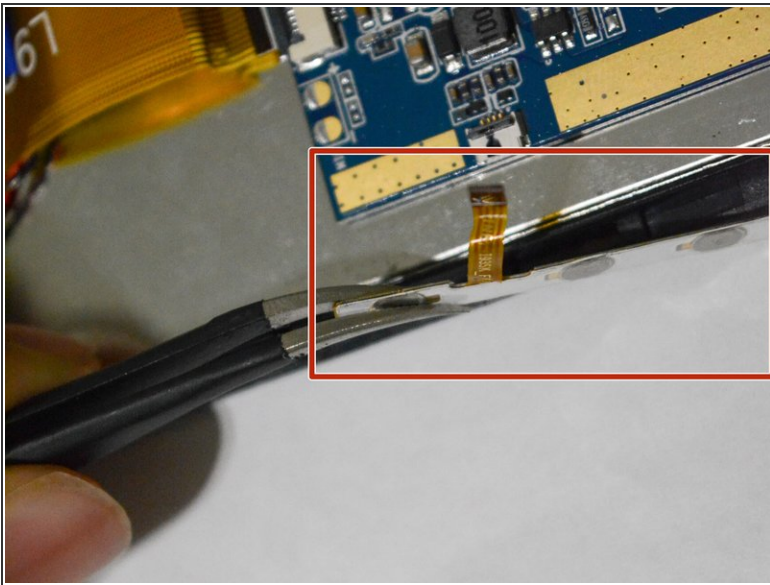
## Step 5



- Once the tab is released, use the angled tweezers to take out the tab.

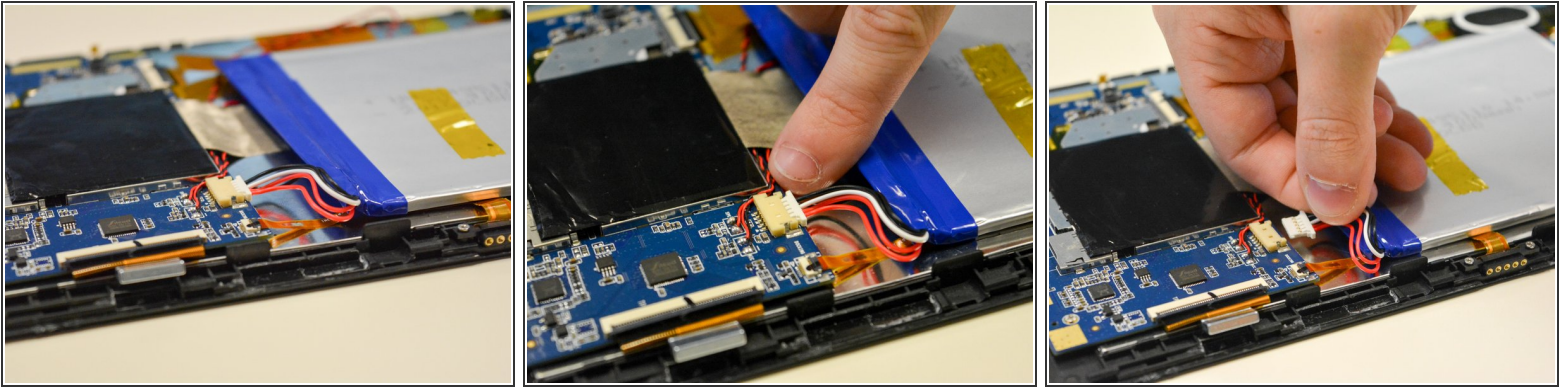
⚠ Be careful not to scratch the tab.

## Step 6



- Use the angled tweezers to pull the volume controls out and replace it with a new one.

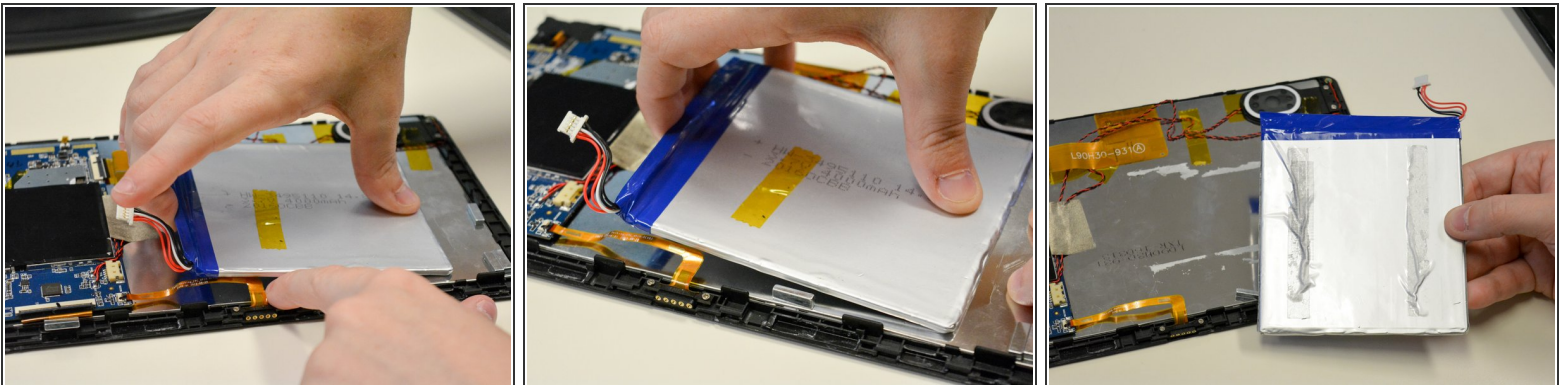
## Step 7 — Battery



- Locate the white plug next to the battery.
- Use your fingers to pull off white plug that connected to the battery.

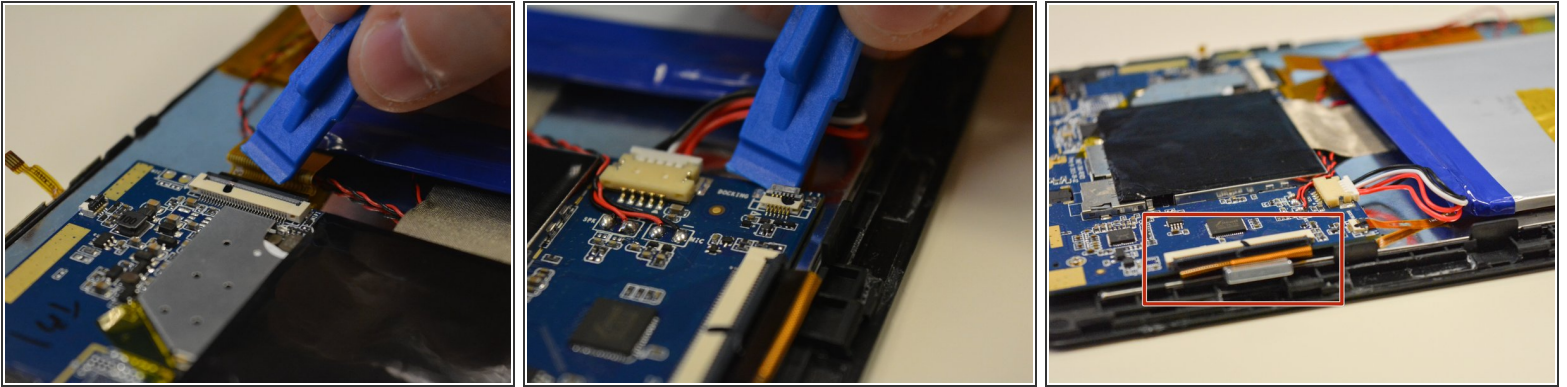
⚠ Be careful not to pull or break the wires on the bottom.

## Step 8



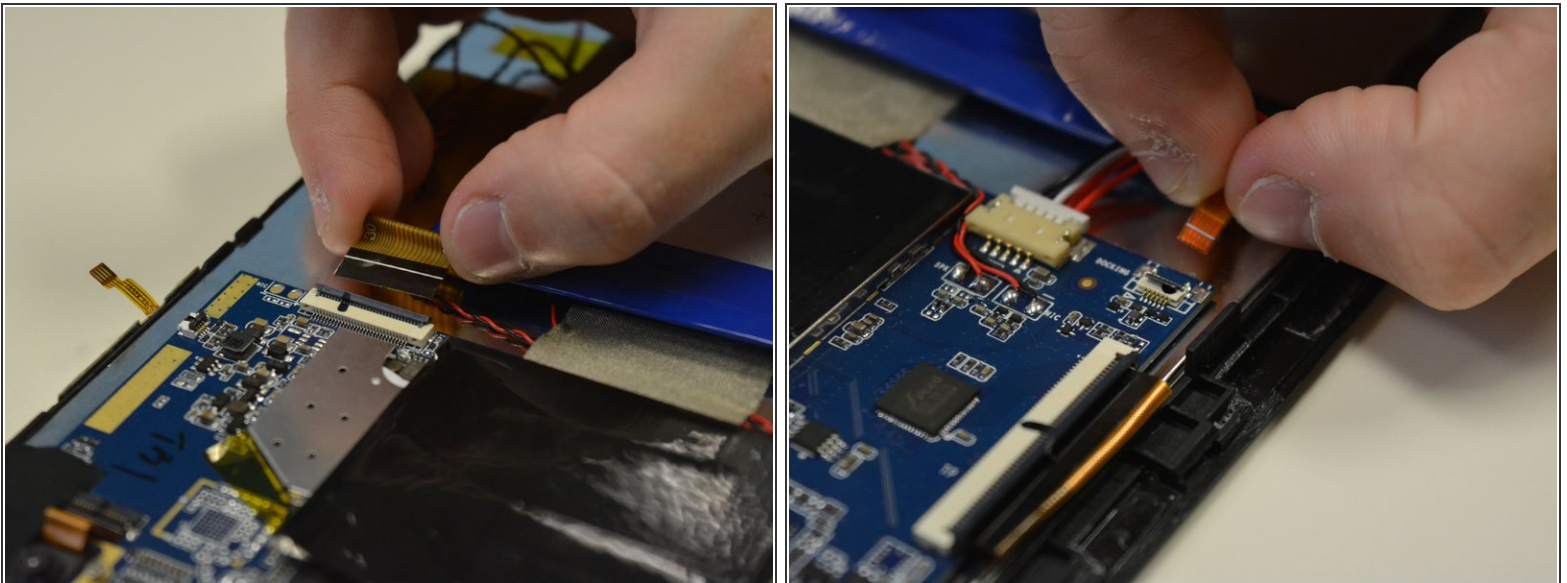
- The battery should only be connected to the LCD by adhesive tape.
- Using force, carefully remove the battery while holding the LCD in place.

## Step 9 — LCD Screen



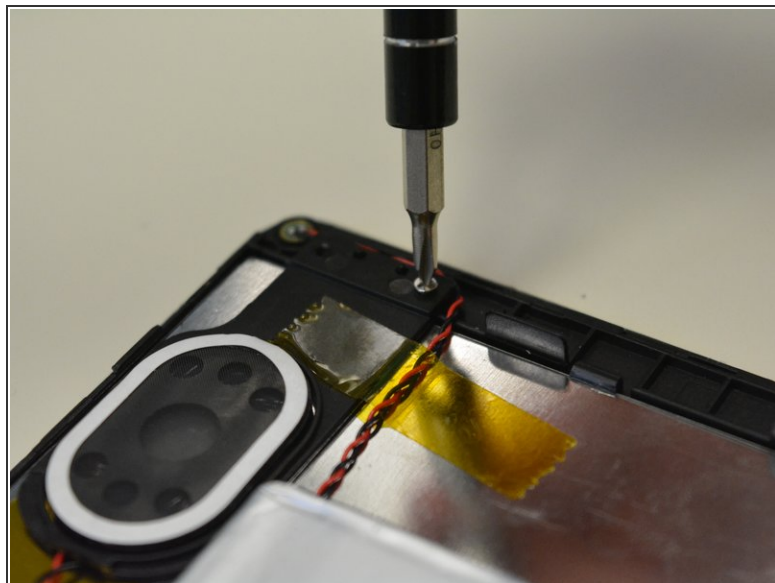
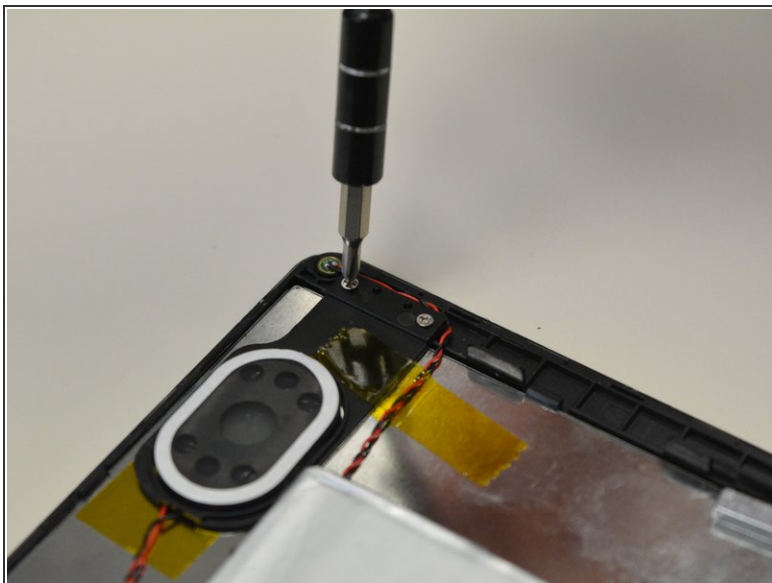
- Open the three black flaps located on each side of the motherboard.

## Step 10



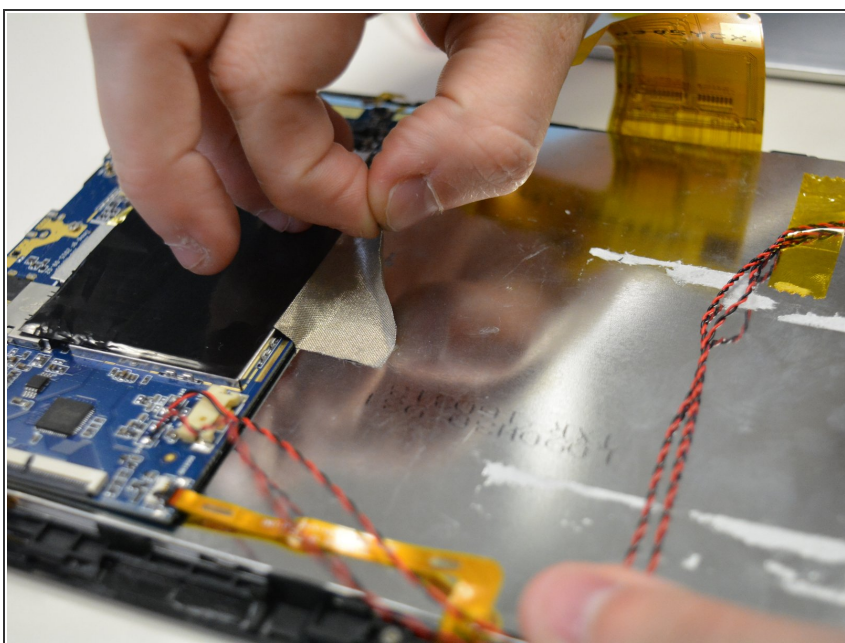
- Then detach each of the three tabs from the LCD screen.

## Step 11



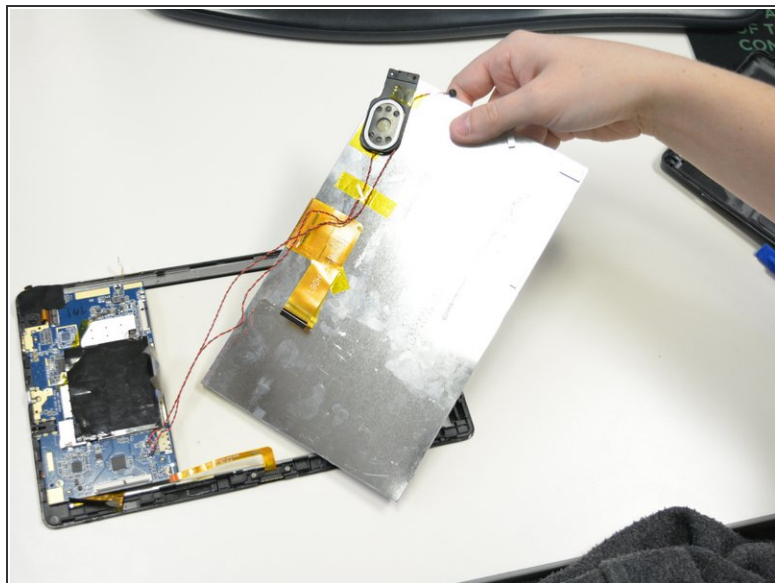
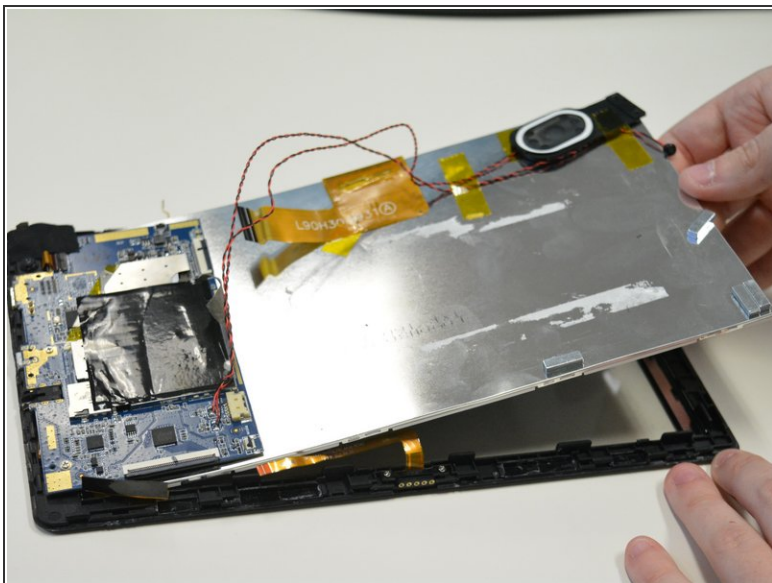
- Using a Philips 0 Screwdriver, remove the screws connecting the speaker to the motherboard.
- Remove black plastic speaker holder.

## Step 12



- Remove the gray tape connecting the motherboard to the metal slate.
- Use a spudger to separate the metal slate from the front touch screen.

## Step 13



- Carefully slide out the metal slate and LCD screen from underneath the motherboard.

## Step 14



- Flip over the metal slate and separate the LCD screen from it.

To reassemble your device, follow these instructions in reverse order.