



Craig Electronics CMP773 Front and Rear Camera Replacement

Use this guide to replace the front and rear cameras in your Craig Electronics CMP773 tablet.

Written By: Luke VanLangevelde



INTRODUCTION

If the camera on your Craig Electronics CMP773 Tablet is scratched, damaged, or malfunctioning for any reason, you may find yourself needing to replace it. This guide will lead you through replacing the camera unit on your tablet. Note that the front and rear cameras are attached to the same electronic circuit, so the replacement part is just one unit for both cameras.



TOOLS:

- [Spudger](#) (1)
- [iFixit Opening Tools](#) (2)
- [Phillips #00 Screwdriver](#) (1)



PARTS:

- [Craig Electronics Replacement Camera](#) (1)

Step 1 — Front and Rear Camera



- Remove the two Phillips #00 screws from the bottom of the screen.

Step 2



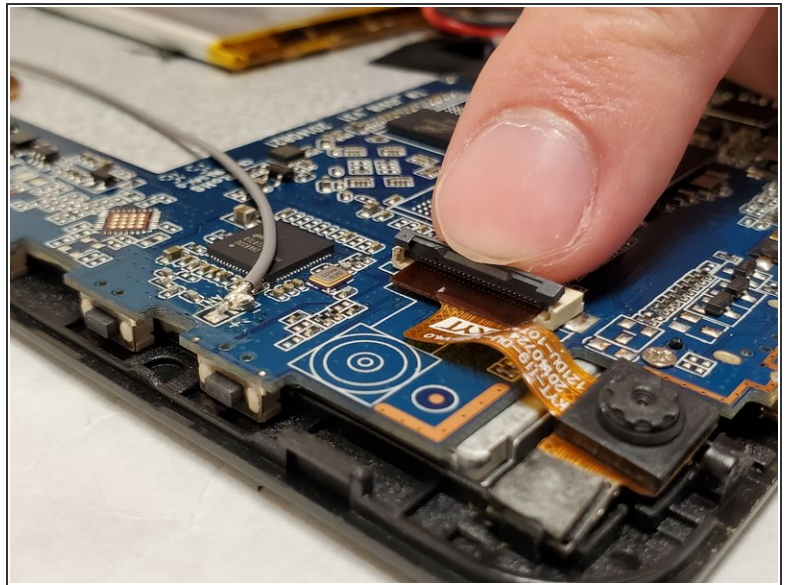
- Insert a plastic opening tool underneath the screen.
- Once the first tool is inserted, insert another opening tool along the same side of the tablet.
- Pry them in opposite directions until the casing pops.

Step 3



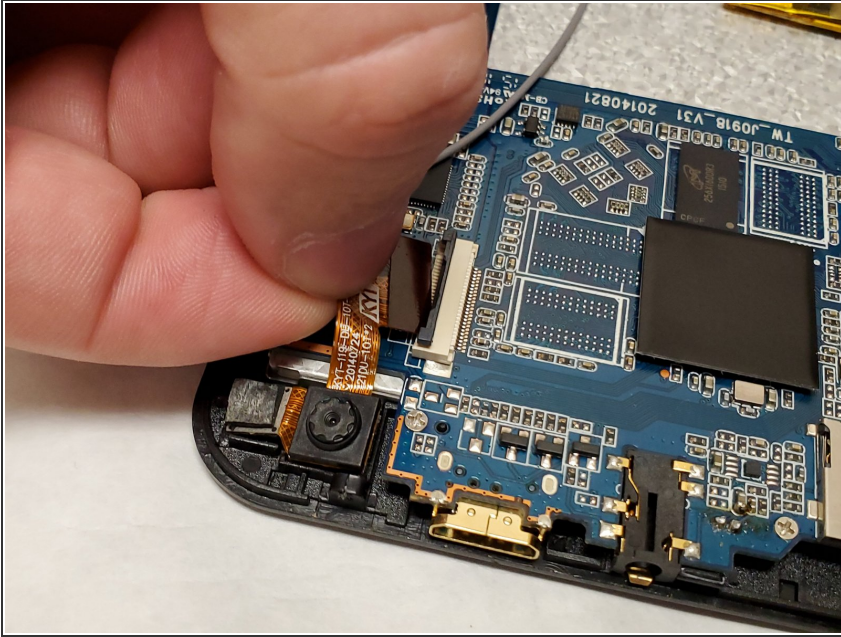
- Move the opening tool along the edge of the tablet to continue popping the casing loose.
- Once the casing is about half loose, remove it by hand.

Step 4



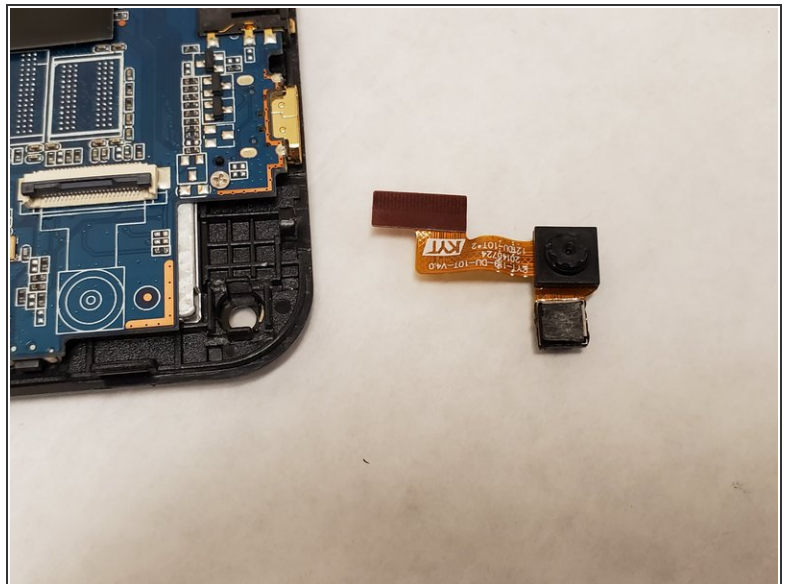
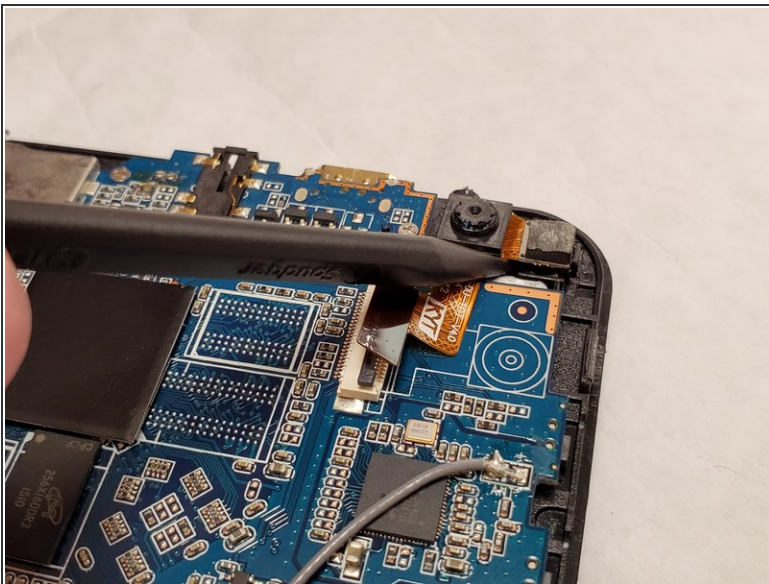
- Remove the tape from the power connection for the camera unit.
- Unhinge the clamp on the camera power connection to expose the removable plug.

Step 5



- Gently remove the power ribbon from the connector.

Step 6



- Use the spudger to dislodge camera unit from the casing and remove it from the device.

To reassemble your device, follow these instructions in reverse order.