



Craig Electronics CMP773 Screen Replacement

Replacing a cracked or faulty display on your Craig Electronics CMP773 tablet.

Written By: Justin mersch



INTRODUCTION

It is common for screens on tablets to scratch, crack, and break from use. Also, screens may malfunction or stop working for a number of reasons. This step by step guide will lead you through disassembling your Craig Electronics CMP773 in order to replace the screen.



TOOLS:

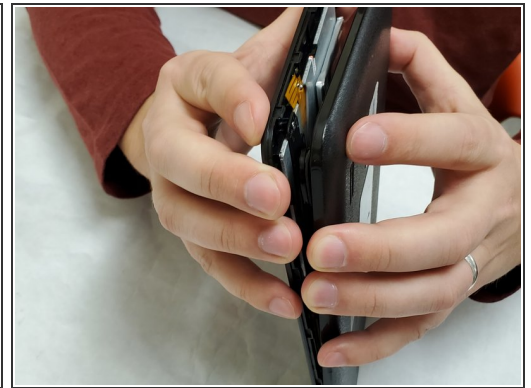
- [iFixit Opening Tools](#) (1)
 - [Phillips #00 Screwdriver](#) (1)
-

Step 1 — Screen



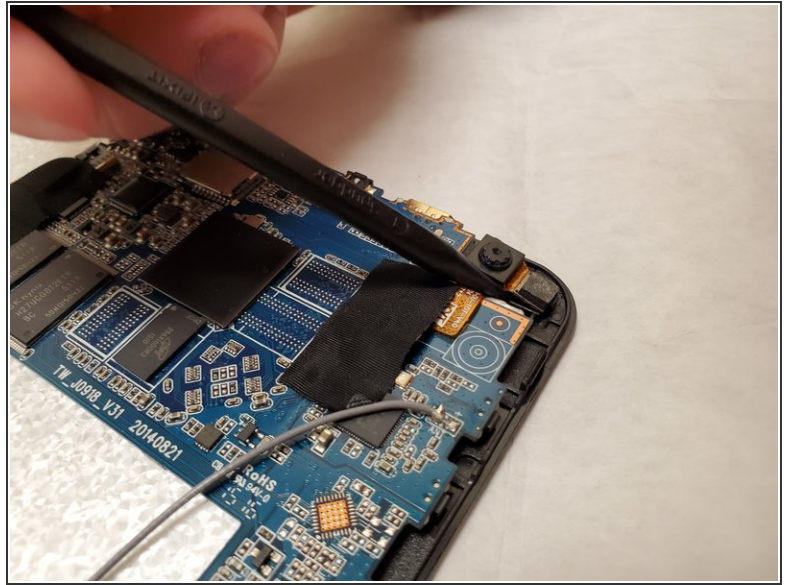
- Remove two screws on the charging port side of the tablet using the Phillips #00 screwdriver.

Step 2



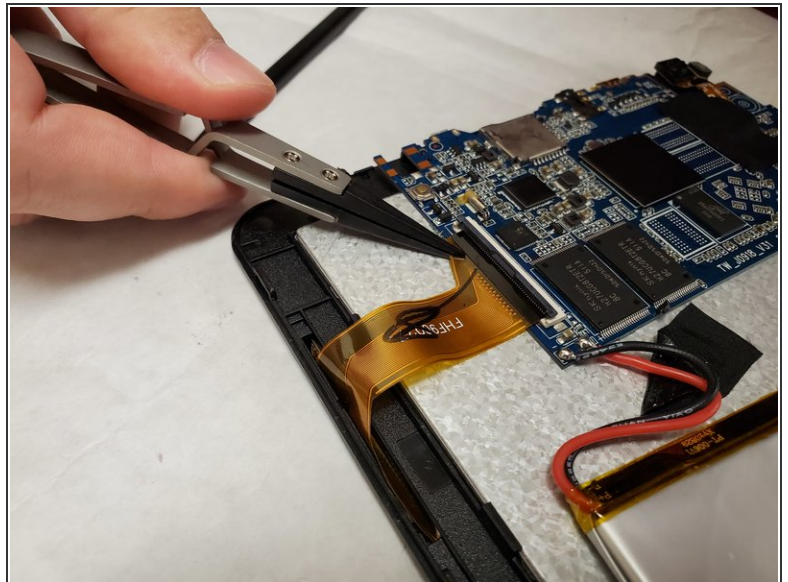
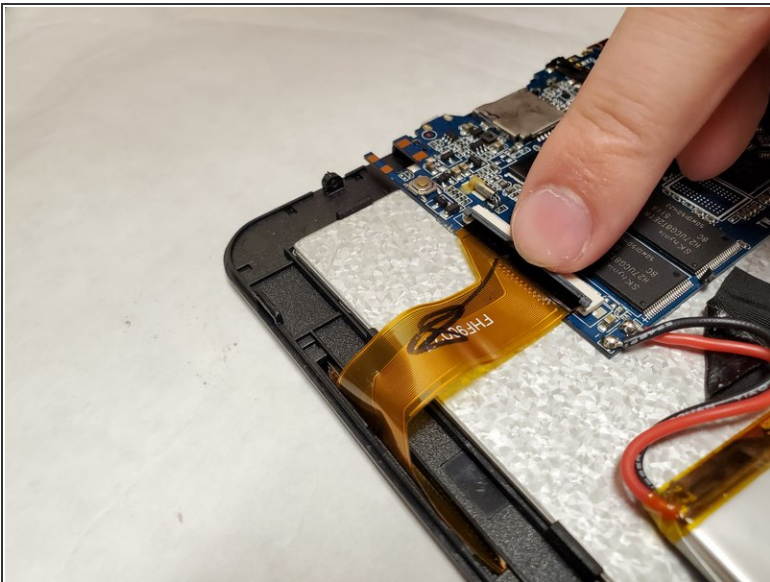
- Insert a plastic opening tool between the screen and the back of the tablet.
- Insert another opening tool along the same side of the tablet and pry them in opposite directions until the casing pops.
- ⓘ Once roughly half of the case has been unlatched, it can be removed by hand.

Step 3



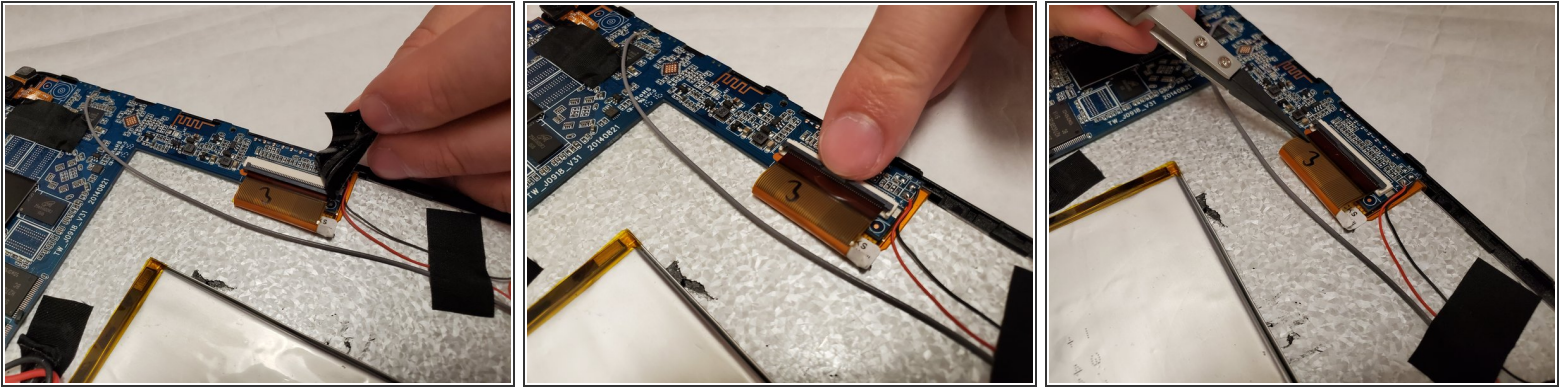
- Use the spudger to gently pry the camera from the casing.

Step 4



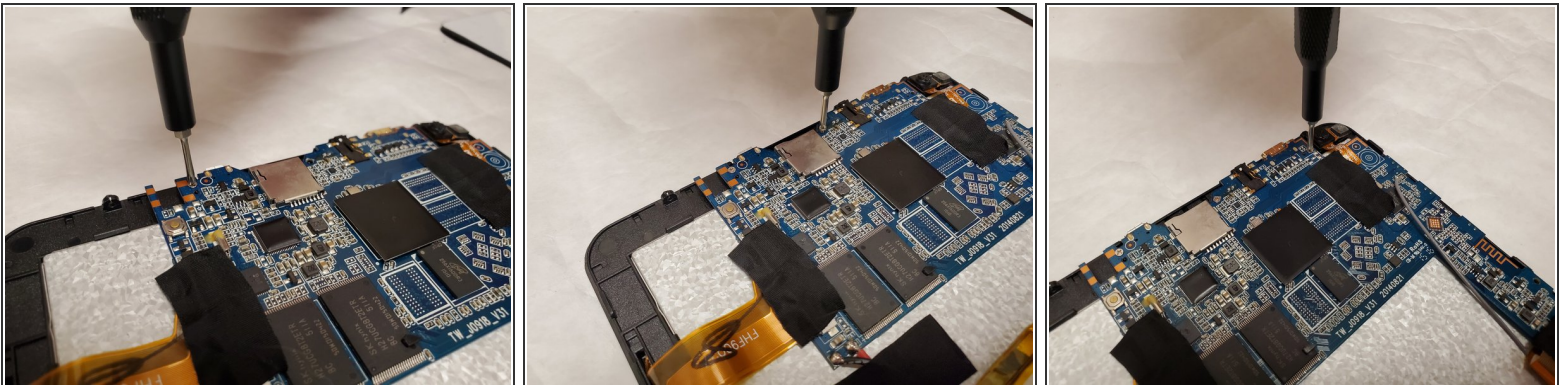
- Using your finger, remove the clamp that connects the screen power rib to the motherboard.
- Using needle nose pliers, remove the ribbon.

Step 5



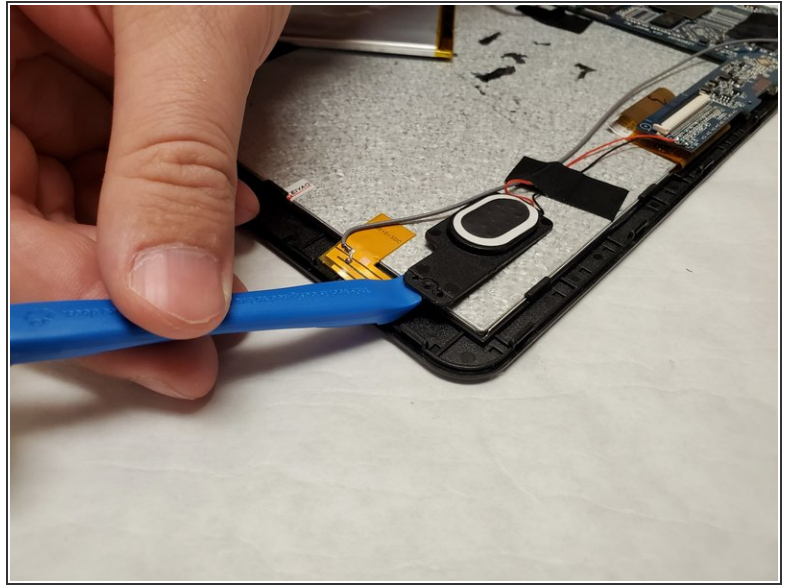
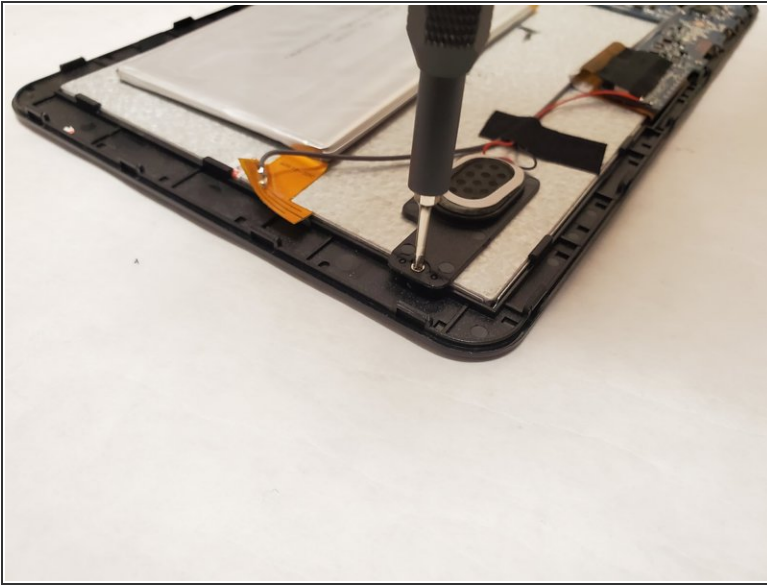
- Remove the second screen power connection from the motherboard using the same procedure as step 4.

Step 6



- Remove four screws from the motherboard using the Phillips #00 screwdriver.

Step 7



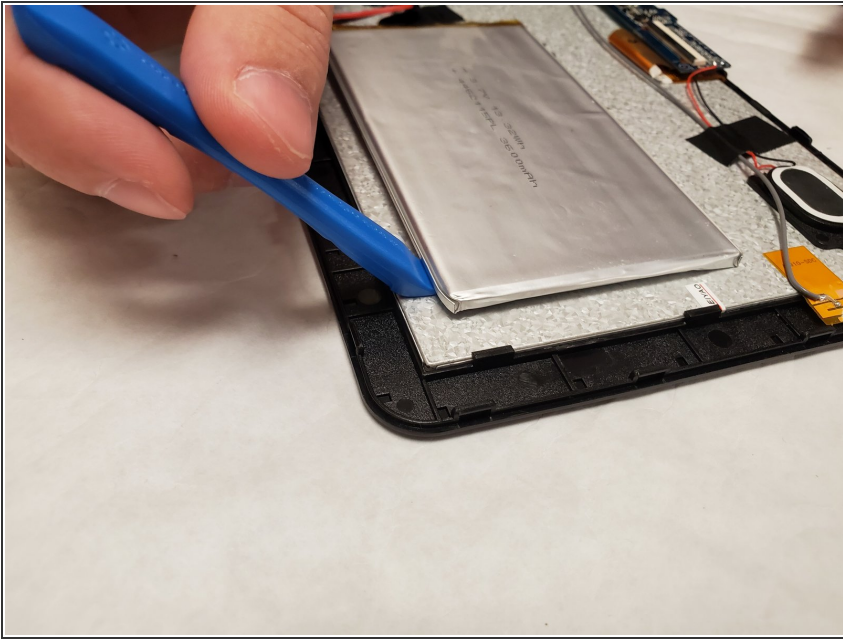
- Remove a single screw from the speaker using the Phillips #00 screwdriver.
- Pry up on the locking tabs with the flat spudger.

Step 8



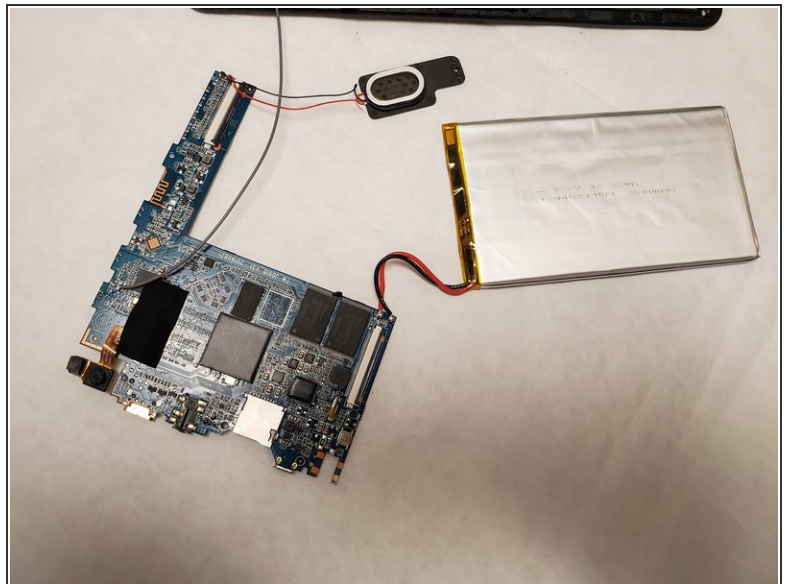
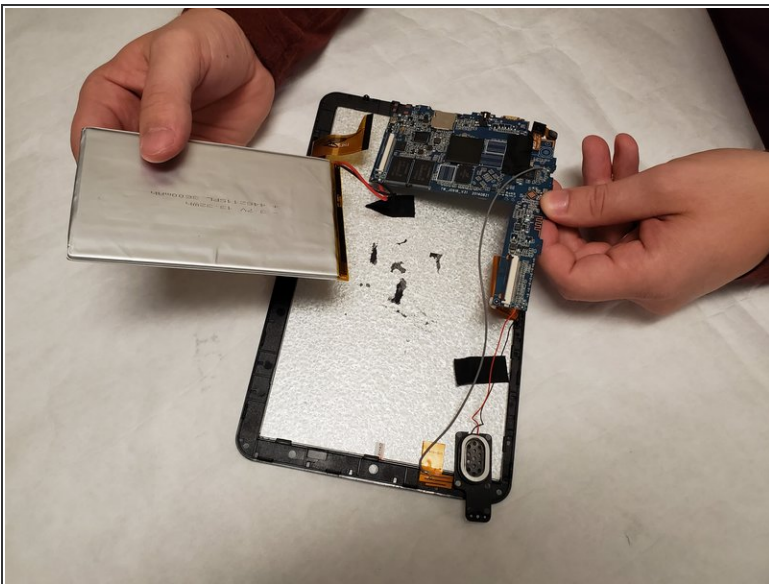
- Using needle nose pliers, remove the ground wire from the casing.

Step 9



- Using the plastic opening tool, remove the battery.

Step 10



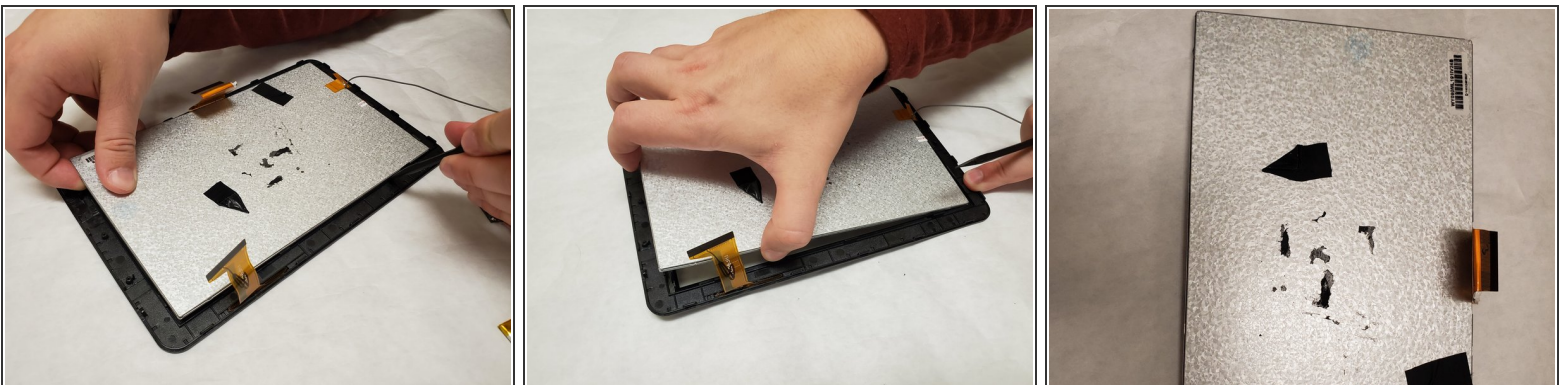
- With all screws and components removed, gently remove the motherboard from the casing.

Step 11



- Insert the spudger in between the screen and case. Work your way around the outside of the screen.

Step 12



- Grasp the exposed screen corner and gently separate the screen from the housing.

To reassemble your device, follow these instructions in reverse order.