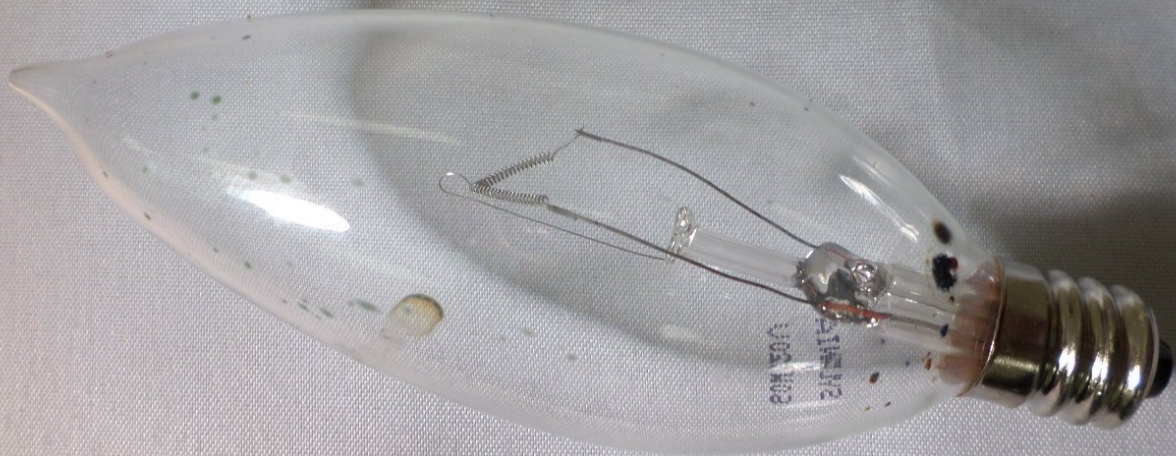




Crayola Crayon Maker Light Bulb Removal and Replacement

Step-by-step directions to disassemble the light bulb packaging and to properly replace the light bulb.

Written By: Heidi Clarke



INTRODUCTION

In order for the Crayola Crayon Maker to melt crayon pieces and create new whole crayons, the light bulb needs to be in good working order. To replace a burned out bulb, all that is needed is a small Phillips screwdriver and a colorless 60-watt candelabra light bulb with a small base.



TOOLS:

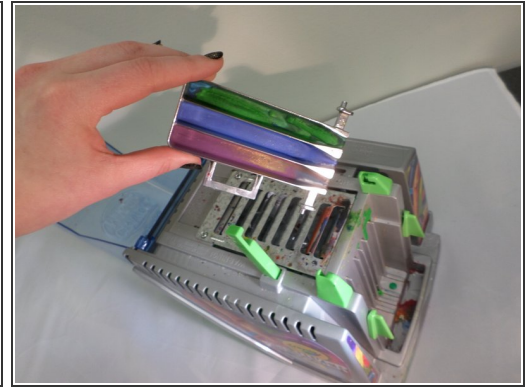
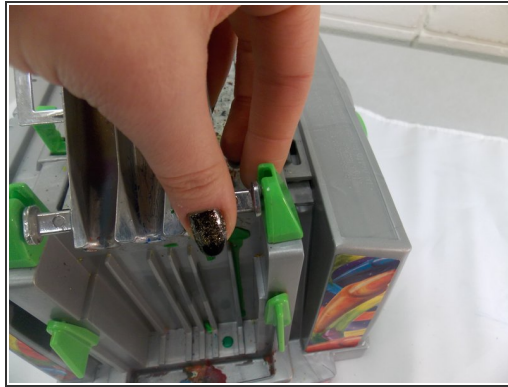
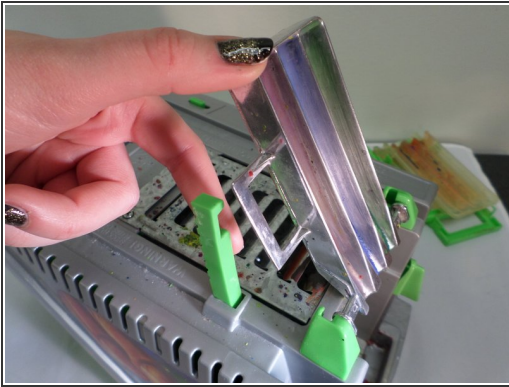
- [Phillips #2 Screwdriver](#) (1)



PARTS:

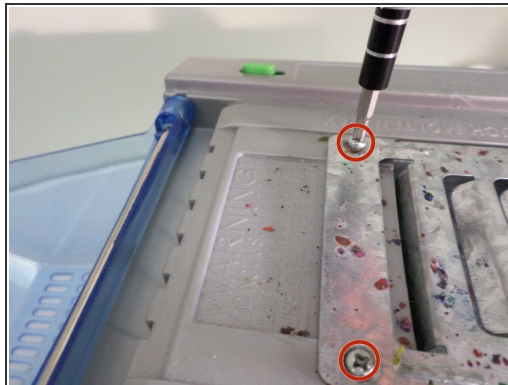
- [60 watt candelabra light bulb with small screw base](#) (1)

Step 1 — Take out the melting tray that is out of place.



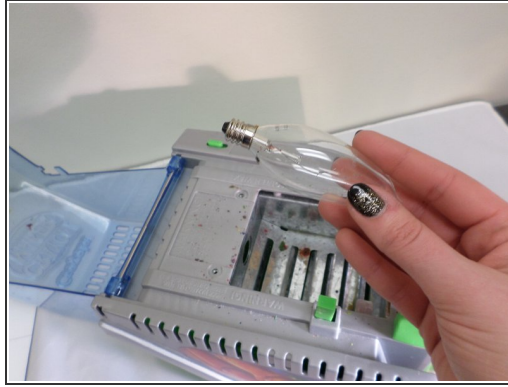
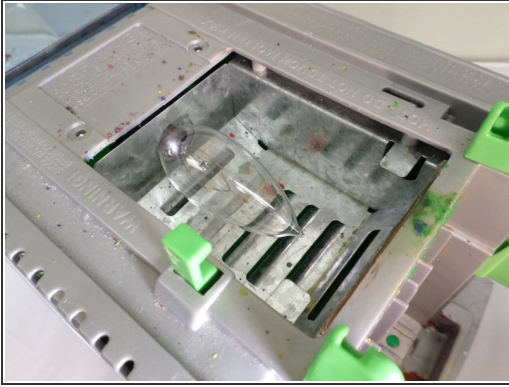
- Press the green arm away from the melting tray. Remove the melting tray.
- Pop the metal arms out of the green pivot support.

Step 2 — Remove the metal melting tray.



- Remove the 2 screws (.75cm in length) currently securing the metal melting tray with a Phillips #2 screwdriver.

Step 3 — Remove the light bulb



- The light bulb should now be revealed. Unscrew the burned out bulb and replace with a new bulb.