



# Creative Zen Vision M Hard-drive Replacement

If your device keeps freezing your hard drive may be dead. If formatting the hard drive did not resolve the issue, here is how to replace your hard drive

Written By: Kirstie G



---

## INTRODUCTION

This guide demonstrates how to replace the hard drive. The tool needed is a flat edged plastic tool.

---



### TOOLS:

- [iFixit Opening Tools](#) (1)
  - [Flathead Screwdriver](#) (1)
  - [Phillips #0 Screwdriver](#) (1)
-

## Step 1 — Opening the top



- Pop off the top plastic on the device with a flat tool like a flathead screwdriver.
- Unscrew and remove the two exposed Phillips head screws.
- Do the same for the bottom plastic surrounding the bottom connector, as there are two screws under here as well.

## Step 2 — Opening the device



- Work your way around the recess of the device with a flat tool like a flathead screwdriver.
- Don't try attempt to open it from the recess between the buttons and the device.

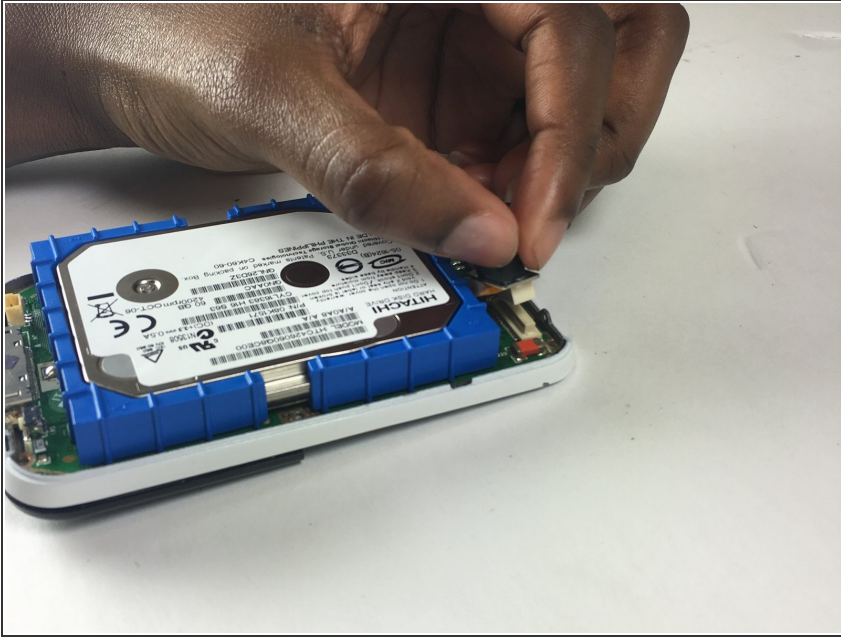
## Step 3 — Disconnecting from the screen



- To detach wires from the screen, gently tug on the wires connected to the battery. They are located on the bottom half of the screen.

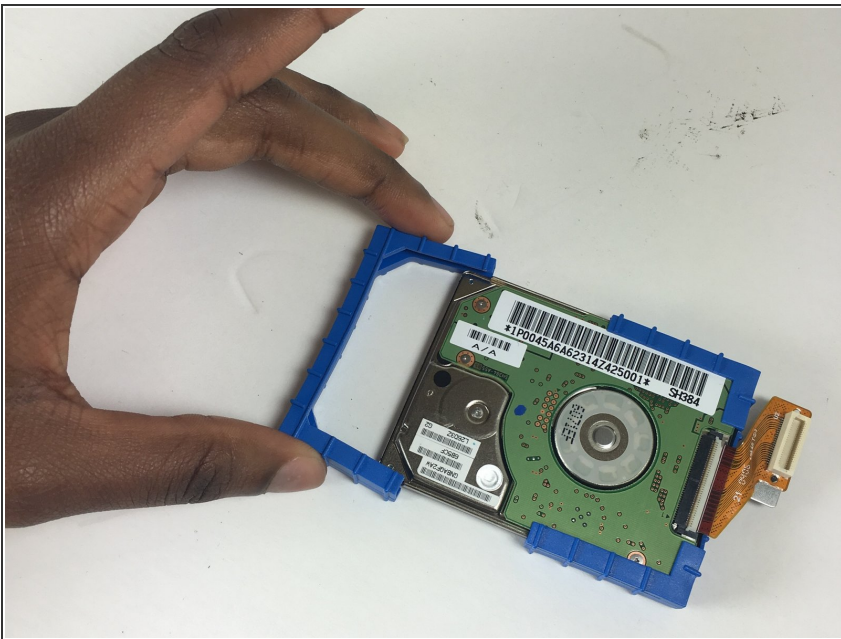


## Step 4 — Disconnecting the hard drive



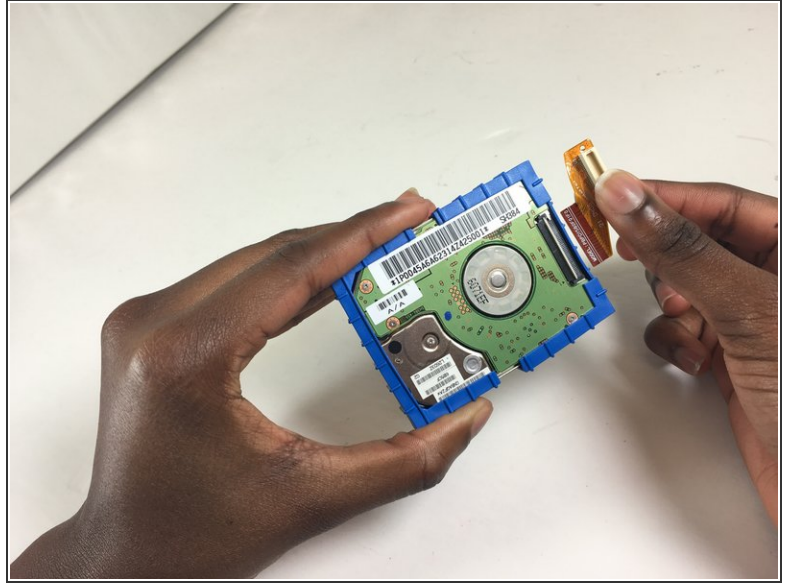
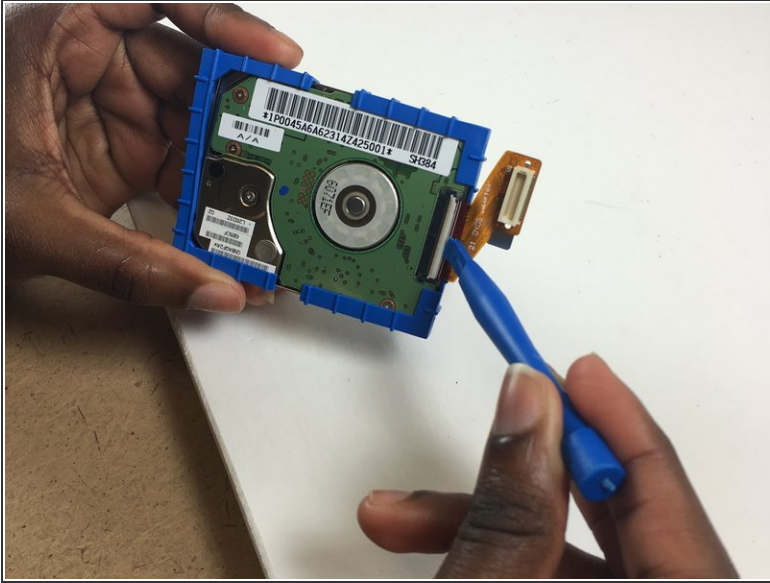
- Pull black hard drive connector located at the top right.
- Ensure, as demonstrated by the image, that the screen is safely removed first. There is an iFixit guide showing how to carefully pull apart the Creative Zen Vision M.

## Step 5 — Removing bumpers



- Pull off blue bumpers and connect to new hard drive

## Step 6 — Removing hard drive connector



- Lift white flap on top of hard drive to disconnect hard drive connector.

To reassemble your device, follow these instructions in reverse order.