



# Creative Zen Vision M Screen Replacement

If your screen is flickering, blacked out, or cracked, this guide will assist you.

Written By: Kirstie G



## INTRODUCTION

This guide demonstrates how to replace a screen. You will need a one mm Phillips head screwdriver. Keep in mind that the Creative Zen Vision was released in 2005 and discontinued shortly after that. So it may be difficult to obtain a new screen to use as a replacement.



### TOOLS:

- [Flathead Screwdriver](#) (1)
  - [1mm phillips head screwdriver](#) (1)
  - [Phillips #0 Screwdriver](#) (1)
-

## Step 1 — Opening the top



- Pop off the top plastic on the device with a flat tool like a flathead screwdriver.
- Unscrew and remove the two exposed Phillips head screws.

## Step 2 — Opening the device



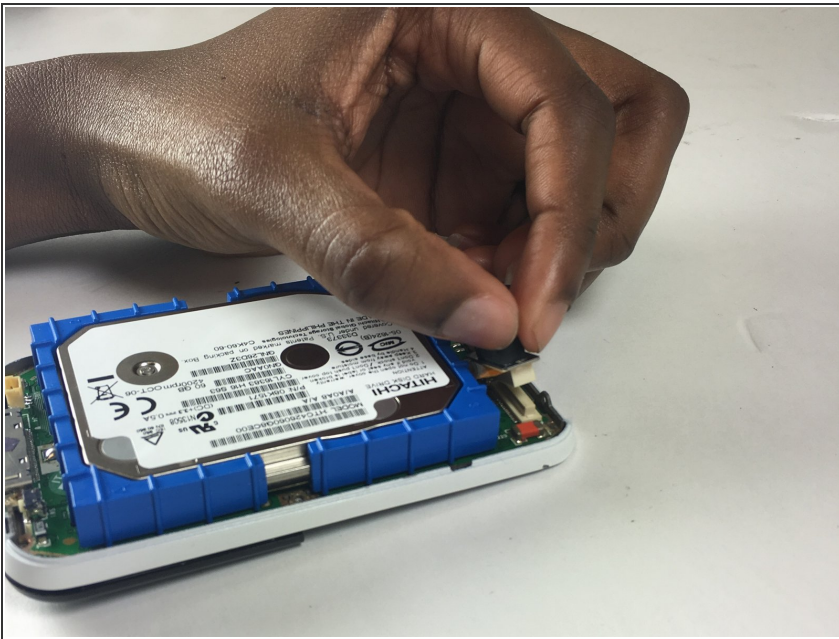
- Work your way around the recess of the device with a flat tool like a flathead screwdriver.
- Don't try attempt to open it from the recess between the buttons and the device.

### Step 3 — Disconnecting the battery



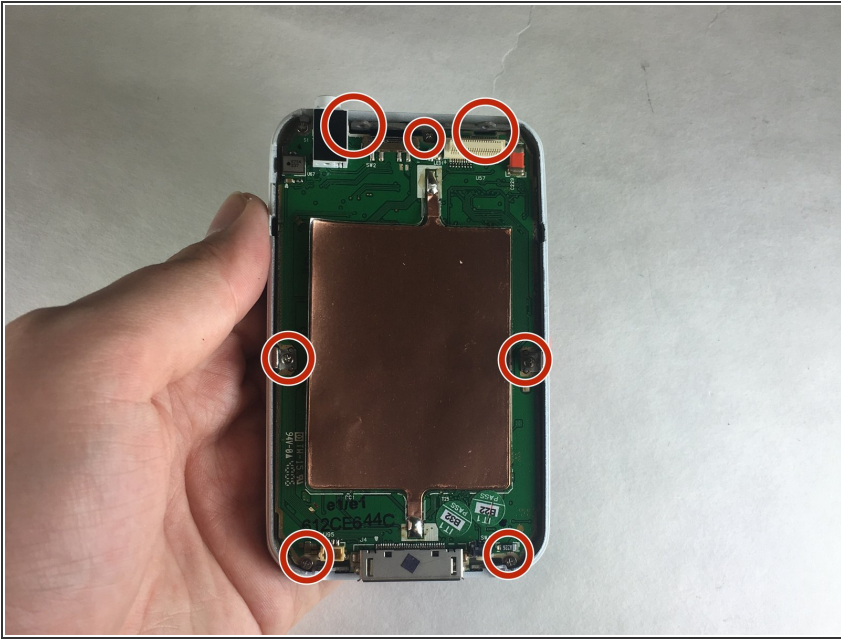
- Disconnect the wire from the bottom device.
- Handle with care as the wires tend to disconnect easily.

### Step 4 — Disconnecting the hard drive



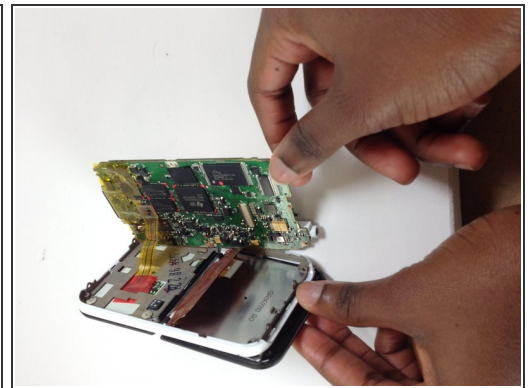
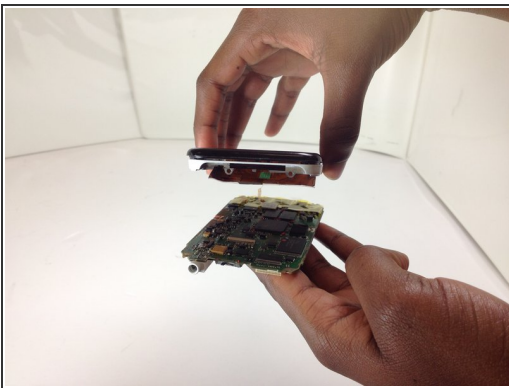
- In the top right corner, pull the black foam square off to separate the hard drive from the screen.
- Handle with care as the hard drive also comes off easily.

## Step 5 — Unscrewing from the mother board



- Unscrew the seven screws placed around the mother board.
- You will need a one millimeter Phillips head screwdriver.
- The screws are small, so keep them safely.

## Step 6 — Disconnecting the screen from the motherboard



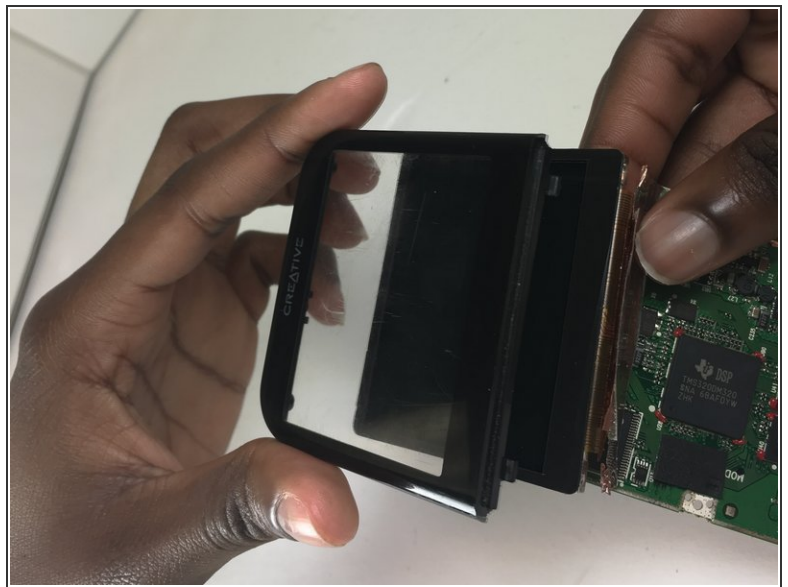
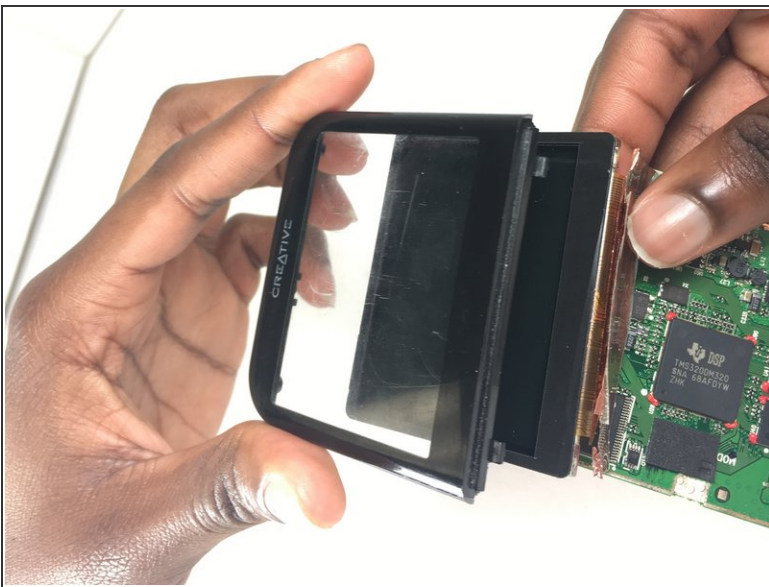
- Flip your device upside down so that the motherboard will loosen.
- Detach the connector from the motherboard.

## Step 7 — Removing the screen



- Tilt the screen diagonally. Separate the screen and motherboard from the device frame.
- Lift the light gray flap to detach the screen from the motherboard.

## Step 8 — Separating the digital display



- Separate the clear screen frame from the digital display.

To reassemble your device, follow these instructions in reverse order.